

*Rapid range expansion predicted for the Common Grackle (*Quiscalus quiscula*) in the near future under climate change scenarios*

Article

Published Version

Creative Commons: Attribution 4.0 (CC-BY)

Open access

Capainolo, P., Perktas, U. and Fellowes, M. D. E. ORCID: <https://orcid.org/0000-0001-5431-8637> (2021) Rapid range expansion predicted for the Common Grackle (*Quiscalus quiscula*) in the near future under climate change scenarios. *Avian Research*, 12. 50. ISSN 2053-7166 doi: <https://doi.org/10.1186/s40657-021-00285-2> Available at <https://centaur.reading.ac.uk/100634/>

It is advisable to refer to the publisher's version if you intend to cite from the work. See [Guidance on citing](#).

To link to this article DOI: <http://dx.doi.org/10.1186/s40657-021-00285-2>

Publisher: BMC

All outputs in CentAUR are protected by Intellectual Property Rights law, including copyright law. Copyright and IPR is retained by the creators or other copyright holders. Terms and conditions for use of this material are defined in the [End User Agreement](#).

www.reading.ac.uk/centaur

CentAUR

Central Archive at the University of Reading

Reading's research outputs online

RESEARCH

Open Access



Rapid range expansion predicted for the Common Grackle (*Quiscalus quiscula*) in the near future under climate change scenarios

Peter Capainolo^{1,2*} , Utku Perktas^{1,3} and Mark D. E. Fellowes²

Abstract

Background: Climate change due to anthropogenic global warming is the most important factor that will affect future range distribution of species and will shape future biogeographic patterns. While much effort has been expended in understanding how climate change will affect rare and declining species we have less of an understanding of the likely consequences for some abundant species. The Common Grackle (*Quiscalus quiscula*; Linnaeus 1758), though declining in portions of its range, is a widespread blackbird (Icteridae) species in North America east of the Rocky Mountains. This study examined how climate change might affect the future range distribution of Common Grackles.

Methods: We used the R package Wallace and six general climate models (ACCESS1-0, BCC-CSM1-1, CESM1-CAM5-1-FV2, CNRM-CM5, MIROC-ESM, and MPI-ESM-LR) available for the future (2070) to identify climatically suitable areas, with an ecological niche modelling approach that includes the use of environmental conditions.

Results: Future projections suggested a significant expansion from the current range into northern parts of North America and Alaska, even under more optimistic climate change scenarios. Additionally, there is evidence of possible future colonization of islands in the Caribbean as well as coastal regions in eastern Central America. The most important bioclimatic variables for model predictions were Annual Mean Temperature, Temperature Seasonality, Mean Temperature of Wettest Quarter and Annual Precipitation.

Conclusions: The results suggest that the Common Grackle could continue to expand its range in North America over the next 50 years. This research is important in helping us understand how climate change will affect future range patterns of widespread, common bird species.

Keywords: Annual mean temperature, Climate change, Common Grackle, Ecological niche modelling, Range shift, Seasonality

Background

Throughout the Quaternary (the last 2.59 million years of Earth history) large continental ice sheets in the Northern Hemisphere have repeatedly advanced and retreated; these geologic processes are known as glacial and interglacial periods, respectively (Fairbridge 1972). The last 430 thousand years have been dominated by

*Correspondence: pcap@amnh.org

¹ Division of Vertebrate Zoology-Department of Ornithology, American Museum of Natural History, Central Park West@ 79th Street, New York, NY 10024-5192, USA

Full list of author information is available at the end of the article



© The Author(s) 2021. **Open Access** This article is licensed under a Creative Commons Attribution 4.0 International License, which permits use, sharing, adaptation, distribution and reproduction in any medium or format, as long as you give appropriate credit to the original author(s) and the source, provide a link to the Creative Commons licence, and indicate if changes were made. The images or other third party material in this article are included in the article's Creative Commons licence, unless indicated otherwise in a credit line to the material. If material is not included in the article's Creative Commons licence and your intended use is not permitted by statutory regulation or exceeds the permitted use, you will need to obtain permission directly from the copyright holder. To view a copy of this licence, visit <http://creativecommons.org/licenses/by/4.0/>. The Creative Commons Public Domain Dedication waiver (<http://creativecommons.org/publicdomain/zero/1.0/>) applies to the data made available in this article, unless otherwise stated in a credit line to the data.

100-thousand year glacial-interglacial cycles. Interglacial periods make up a minority (20%) of these cycles, lasting on average ~10 to 30 thousand years (Philander 2008). In general, glacial periods were colder and drier than interglacial periods (Jansen et al. 2007). Glacial-interglacial cycles and their strong attendant climatic fluctuations forced species to either move to locations that remained suitable or to adapt to changing environmental conditions. The alternative outcome was extinction (Jansson and Dynesius 2002).

The most conspicuous and best documented responses of warm, temperate, and cold temperature-adapted species to these climatic fluctuations are latitudinal and altitudinal range shifts. Since the Last Glacial Maximum, warming temperatures have caused temperate and montane species to shift their ranges towards higher (northern) latitudes and altitudes (Bennett and Provan 2008; Stewart et al. 2010). These range shifts have left signals of high genetic diversity in refugia (for a detailed discussion of the refugium concept, see Stewart et al. 2010) and low genetic diversity in regions recently colonized from refugia (Hewitt 2000). Ongoing climate change is currently causing shifts in the geographic distributions of species globally and may have increased the vulnerability of some species due to rapid changes in ecological conditions (Root et al. 2003; Parmesan 2006). Understanding how species have responded to strong climatic fluctuations accompanying glacial-interglacial cycles is critical to predicting their likely future responses to climate change and can help guide conservation strategies for negatively affected species.

Predicting future distributions relies upon the use of climate change models which vary in starting assumptions (Dunn and Møller 2019), but clear scenarios of likely anthropogenic change are provided by the Intergovernmental Panel on Climate Change (IPCC 2019). Known as Representative Concentration Pathway scenarios, these can be applied to Species Distribution Models such as MaxEnt to help explore the possible range of effects of climate change on the future range of species of interest, which considers the spatial and environmental characteristics of regions of interest (Elith et al. 2011). Such modelling is the basis of predicting shifting species distribution patterns (Huntley 2019) as the world warms, and typically is used to model the effects of climate change on rare species of conservation interest or those with economic impact. More common species have been studied as well (Hitch and Leberg 2007); Common Grackle is of particular interest; it is wide-ranging, and its population and range expansion has been influenced greatly by human habitat modifications.

The Common Grackle (*Quiscalus quiscula*) is one of the most widespread and common migrating bird species

in North America (Peer and Bollinger 1997a; Jaramillo and Burke 1999). Morphological differences indicate two well defined, and one equivocal subspecies in its total distribution range (Huntington 1952; Yang and Selander 1968). The generalist nature and varied feeding strategies of Common Grackles, in conjunction with major anthropogenic changes in the North American landscape during the 18th and 19th Centuries, precipitated a rise in population numbers and their expansion into open agricultural regions as well as suburban parks and towns; population estimates rose to over 150 million by 1970 (Strassburg 2011). Since then, the species has undergone a gradual population reduction of >50% which may be due to long standing lethal control methods aimed at protecting important agricultural products such as corn and sunflower from seasonal ravages of large flocks of grackles (Peer and Bollinger 2017). Although the range of the species is large, and the population is currently estimated at about 69,000,000 individuals, the International Union for Conservation of Nature Red List for Birds (2018, 2020) precautionarily lists the Common Grackle as a “Near Threatened” species (Bird Life International 2018, 2020a, 2020b). In this study, we focus on future (2070) distribution predictions of the Common Grackle to understand the role of climate change on its range dynamics.

Methods

Climatic modelling of the Common Grackle was completed using the R package Wallace (Kass et al. 2018) under the R v. 3.5.0 (R Core Team 2018) to model the species ecological niches for current and future (2070; ACCESS1-0, BCC-CSM1-1, CESM1-CAM5-1-FV2, CNRM-CM5, MIROC-ESM, and MPI-ESM-LR) bioclimatic conditions. The future (2070) bioclimatic conditions were based on the Representative Concentration Pathways 2.6 and 8.5 CO₂ emissions pathway, long considered an ‘optimistic scenario’ and a ‘worst case scenario’, approaches that are the most appropriate for conducting assessments of climate change impacts by 2050 (Schwalm et al. 2020). In the modelling process, species occurrence data were compiled from our previous paper (Capainolo et al. 2020). Only breeding records of the Common Grackle between April and July of 2000–2019 were included and totaled more than 4 million records. Sampling bias and spatial autocorrelation were considered for occurrence records (Brown 2014). This allowed us to evaluate the effect of sampling bias on the ability of ecological niche modelling to project distributions into unsampled regions (Costa et al. 2010). Then, all records were filtered by eye for particularly unusual, unlikely, or spurious sightings, and artefacts were removed from the dataset. Occurrence records were spatially filtered within

25 km distances to remove duplicates and to get a more homogeneous dataset.

The WorldClim (version 1.4) bioclimatic variables were obtained at a resolution of 2.5 arcminutes (4.63 km at the equator). The background extent was set to “minimum convex polygon” with a 1-degree buffer distance and 10,000 background points were sampled. We used block spatial partitioning. The model was built using the Maxent algorithm version 3.4.0 (Phillips et al. 2006; Elith and Leathwick 2009), using the feature classes: L (linear), LQ (linear quadratic), H (Hinge), LQH (Linear, Quadratic, Hinge), and LQHP (Linear, Quadratic, Hinge, Product) with the regularization multiplier 1 that is mostly considered the default setting in Maxent (Tomlinson et al. 2019).

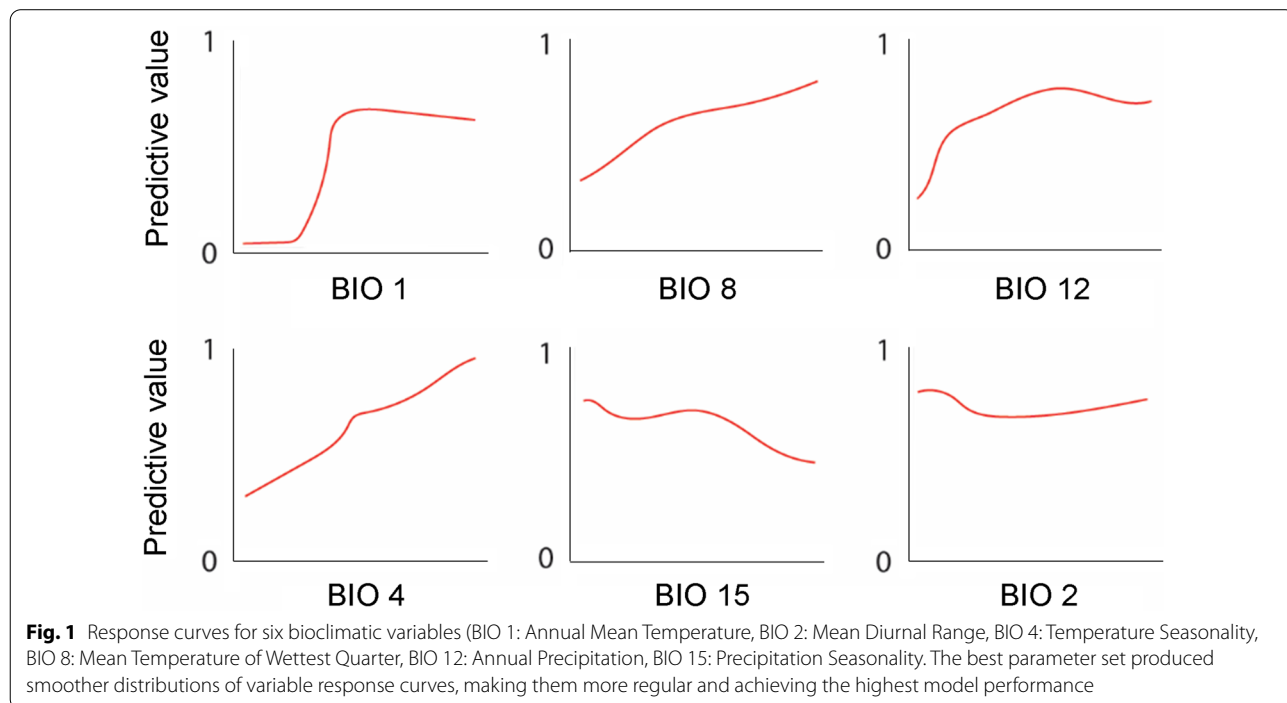
The model was chosen based on the Akaike Information Criterion (AIC) score (Burnham and Anderson 2002). We also used AUC value, which is a threshold independent measure of predictive accuracy based only on the ranking of locations. The AUC value ranges from 0.5 to 1.0, where a value of <0.5 describes no concordance with the data; in contrast, a 1.0 value indicates high model concordance, and values of >0.6 imply good concordance. In general, the higher AUC value shows the higher performance of the model (Mousazade et al. 2019). With this method, we do not use high correlation bioclimatic variables, the threshold for the correlation coefficient was 0.85 based on the best model choice (for details, see Capainolo et al. 2020). The best models were

then projected to the entire North American continent. We used the raster calculation option in ArcGIS version 10.2.2 to see the overlap area for the future predictions.

Results

In total, 9804 occurrence records were used for ecological niche modelling after filtering. The best model performed was linear feature type with 1 regularization multiplier based on the Akaike information criterion corrected for small sample sizes (AICc = 258808.4). The average training AUC for the replicate runs was 0.719, and the average test AUC for the replicate runs was 0.683. Since AUCs were larger than 0.6, model predictions were better than random predictions (see methods), that is, the model was significant for distributional predictions for the Common Grackle. The final models showed that BIO1 (Annual Mean Temperature), BIO2 (Mean Diurnal Range, mean of monthly max temp – min temp) BIO4 (Temperature Seasonality), BIO8 (Mean Temperature of Wettest Quarter), BIO 12 (Annual Precipitation) and BIO 15 (Precipitation Seasonality) are the most important variables for ecological niche modelling predictions for this species (Fig. 1).

Predictions under each of the six future global climate models showed that the Common Grackle will expand its range within the next 50 years (Figs. 2, 3). Both scenarios showed concordant patterns and there was no significant difference between the “optimistic” (RCP 2.6) and “worst-case” (RCP 8.5) predictions. The only difference was that



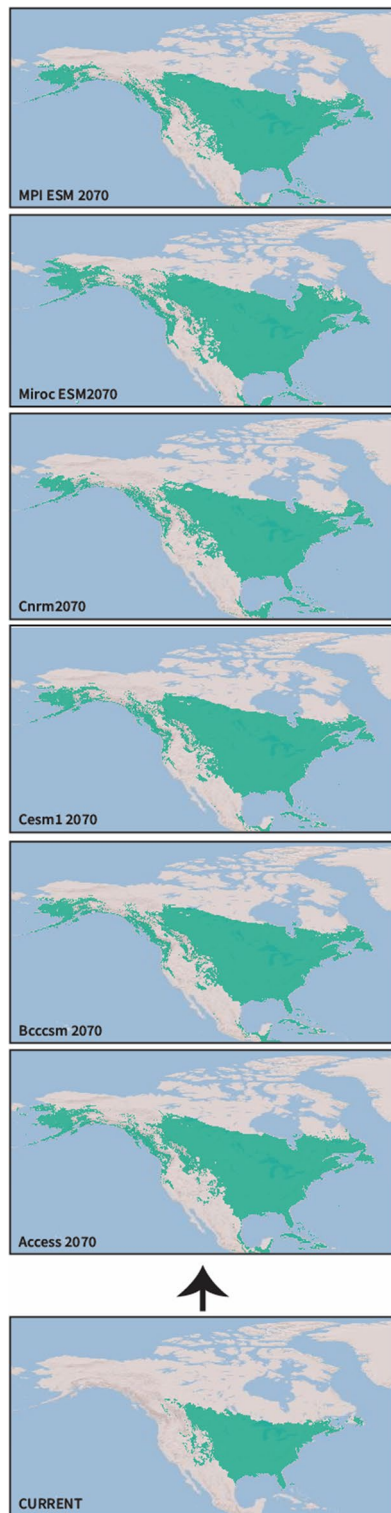


Fig. 2 Ecological niche modelling of the current distribution of the common grackle and its future (2070) distributional predictions, six global climate models based on the “worst” scenario (RCP 8.5). Note that there was no significant difference with the “optimistic” scenario (RCP 2.6)

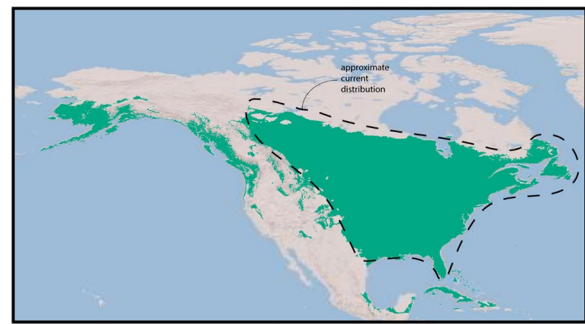


Fig. 3 Overlap distribution area of the Common Grackle in 2070. Dashed line indicates approximate current range

the Common Grackle will expand its range slightly more under the “worst-case” scenario (Fig. 3).

Discussion

A major challenge in understanding and predicting the impacts of climate change and global warming on biodiversity for the near future is to arrive at a generalizable and predictable understanding of these impacts. Studies modeling and predicting the effects of climate change on species’ anticipated responses to climate change (Dunn and Møller 2019). In this study, we focused mostly on the future range dynamics of the Common Grackle and suggest that it will continue expanding northward and westward as well as possibly forming pioneering populations in the Caribbean and eastern Central America.

This study builds on the work of Capainolo et al. (2020) which showed that Common Grackles rapidly expanded their range north from a single refugium in southeastern North America as glaciers receded at the end of the last ice age. We looked at models of the near future (~50 years) under global warming scenarios for the likely distribution of the Common Grackle. There is clear evidence of a range expansion of the Common Grackle to the northern and western parts of the North American continent. Our future projection map (Fig. 3) shows expansion to the northwest into Alberta and British Columbia. The Rocky Mountains continue to act as an isolating barrier although there is evidence of a possible future patchy distribution of Common Grackle populations in the eastern foothills. Of interest is the novel occurrence of this species along the Pacific northwest coastline of the United States and Canada into coastal and southern Alaska. These regions may be colonized by birds using low altitude corridors to the west through British Columbia, some continuing along the coast north to Alaska and others moving south.

Many examples of vagile avian taxa traversing large distances, expanding their range, and colonizing new habitats are known (Crosby 1972; Bairlein et al. 2012; Gill et al. 2013; Oswald et al. 2019). The novel occurrence of 74 avian taxa in Alaska between 1976–1991 were documented by Gibson and Kessel (1992) including 20 species and 8 subspecies recorded for the first time in North America that include both non-passerine and passerine birds. Jamarillo and Burke (1999) state that, “Common Grackle is on the move in the western part of its distribution” and cite many records west of the Rocky Mountains including six from Alaska. Another *Quiscalus* grackle, the Great-tailed Grackle (*Quiscalus mexicanus*), has substantially expanded its range northward in North America since 1880 and benefits from human modified habitats and food sources (Wehtje 2003). These observations, records, and our model suggest an interesting possibility; the Common Grackle might eventually enter the Russian Far East by island hopping the Aleutians across the Bering Sea to become the first New World icterid to naturally colonize the Old World. It is almost certain that these western populations would be “Bronzed” grackles (*Q. q. versicolor*) as occasional vagrants recorded west of the Rockies are always this western subspecies (Jamarillo and Burke 1999; see www.ebird.org Common Grackle 2020).

Due to rapid expansion into isolated novel habitats, and sympatry with other icterid species such as the Red-winged Blackbird (*Agelaius phoeniceus*) (Lenington and Scola 1982) and Rusty Blackbird (*Euphagus carolinus*) (Matsuoka et al. 2010), it is possible that these pioneering populations of Common Grackle will rapidly adapt to new environments. Red-winged Blackbirds do not breed widely in Alaska, but Rusty Blackbirds do (Jaramillo and Burke 1999); possible competition for food in human-cleared habitats between Common Grackles and Rusty Blackbirds might negatively impact the latter (International Rusty Blackbird Technical Group 2009). Sympatry in the northwest breeding range of another icterid, the Brown-headed Cowbird (*Molothrus ater*), a significant brood parasite of numerous passerine bird species, is not likely to impact the breeding success of Common Grackles (Peer and Bollinger 1997b). The appearance of a new icterid species in the region might change the ecological dynamic via competition for food and nesting sites and perhaps, through natural selection, give rise to incipient forms of Common Grackle. Migrants from these regions might also establish the first winter populations west of the Rockies in suitable areas of Washington, Oregon, and California. Our projections also indicate possible coastal colonization in eastern Central America and islands in the Caribbean. These populations would probably be year-round non-migratory residents as are their

likely progenitors, the nominate “Florida” Grackle (*Q. q. quiscula*).

The Common Grackle responded to climate change through Late Quaternary glacial-interglacial cycles and will respond to warming temperatures. Based on these results, this species will occupy a broader range than presently; we predict that the Common Grackle is a species that will benefit from slight changes in climate. This pattern has recently been shown for other avian taxa (e.g. Sharp-tailed Grouse *Tympanuchus phasianellus*; Perktas and Elverici 2020, and Ruffed Grouse *Bonassa umbellus*; Perktas 2021). For a broader range of bird species, see Peterson (2003).

Species distributions are strongly affected by climate, and climate change is largely affecting species and populations (Kreyling et al. 2015). Thermal niches have been widely used as proxies for estimating thermal sensitivity of species and have been frequently related to community composition, population trends and latitudinal/elevational shifts in distribution. In our analyses, temperature is one of the most important abiotic factors that affects the distribution of Common Grackles. Under the optimistic scenario (RCP 2.6), the Common Grackle will become more widespread in North America than it currently is. Our findings suggest that a moderate increase in temperature (RCP 2.6 is likely to keep global temperature increases below 2 °C) is enough to cause range expansion into colder areas of the North American continent. Under the worst-case scenario, the Common Grackle will occupy Alaska, the only difference between the predictions of optimistic and worst-case scenarios. The temperature threshold and thermal sensitivity (Gaüzère et al. 2015) for the distribution of this species looks to be below 2 °C, explaining why there is essentially no difference in distribution between the “best” and “worst” case scenarios in this study. A significant increase in distribution occurs with a 1 °C increase in temperature, but not with an additional 1 °C increase.

Our niche modelling predictions suggest that the Common Grackle, already a very widespread species, is likely to become even more so. However, these inferences are limited due to the confounding effects of biotic relations (Davis et al. 1998). This is an important limitation that could suggest that observed changes in niche characteristics were mostly dependent on the experimental conditions built into the models (Davis et al. 1998). To mitigate this, we used more than one global climate model in this study and considered the overlap of these predictions. Furthermore, the predicted increase in distribution in a warming world will by necessity depend on the future population trends of this species, and opportunity to expand distribution may well be limited by declining populations. This

brings to the fore a relatively little discussed consequence of climate change. For some species, climate change will bring opportunity, but these opportunities can only be exploited if anthropogenic influences on populations are mitigated.

All possibilities that can be seen in the future distribution of Common Grackle are shown in the results; this study demonstrates that they will respond to global warming with significant range shift events. However, each of the past and future model outputs should be examined in more detail by including genetic data in the model outputs.

Conclusions

Common Grackles are an abundant New World blackbird that currently occupies a large home range east of the Rocky Mountains. A past study showed that the species responded to a naturally warming climate at the end of the last Ice Age and rapidly expanded its range to the north and west from refugia in the southeastern United States. They responded to massive human modifications to the environment in the eighteenth and nineteenth centuries; clearing of the great eastern forests and the planting of cash crops caused an increase in population number and range shifts into newly open and semi-open habitats. A population decline began in the 1970's and may be due to lethal control measures aimed at protecting agricultural interests; the current population is estimated at around 69,000,000. Common Grackles are temperature sensitive and respond to warming temperatures by expanding their range into regions formerly too cold for them to thrive in. The modelling in this study suggests further expansion into regions of northwestern North America (and other areas not currently occupied by Common Grackles) under warming temperature scenarios over the next 50 years.

Acknowledgements

We thank editor Federico Morelli and two anonymous reviewers for valuable insights and recommendations which greatly improved the manuscript.

Authors' contributions

PC, UP & MDE, fellows contributed equally to all aspects of this study. All authors read and approved the final manuscript.

Funding

Not applicable.

Availability of data and materials

The datasets used in the present study are available from the corresponding author on reasonable request.

Declarations

Ethics approval and consent to participate

Not applicable.

Consent for publication

Not applicable.

Competing interests

The authors declare that they have no competing interests.

Author details

¹Division of Vertebrate Zoology-Department of Ornithology, American Museum of Natural History, Central Park West@ 79th Street, New York, NY 10024-5192, USA. ²People and Wildlife Research Group, School of Biological Sciences, University of Reading, Whiteknights, Reading RG6 6AS, UK. ³Department of Biology (Zoology Section, Biogeography Research Laboratory), Faculty of Science, Hacettepe University, Beytepe, 06800 Ankara, Turkey.

Received: 1 May 2021 Accepted: 27 September 2021

Published online: 05 October 2021

References

- Bairlein F, Norris DR, Nagel R, Bulte M, Voigt CC, Fox JW, et al. Cross-hemisphere migration of a 25 g songbird. *Biol Lett*. 2012;8:505–7.
- Bennett KD, Provan J. What do we mean by 'refugia'? *Quaternary Sci Rev*. 2008;27:2449–55.
- Bird Life International. Common Grackle *Quiscalus quiscula*. The IUCN Red List of threatened species 2018. <https://doi.org/10.2305/IUCN.UK.2018-2.RLTS.T22724320A131484290.en>. Accessed 26 Jan 2021.
- Bird Life International. Species factsheet: *Quiscalus quiscula*. 2020a. <http://www.birdlife.org>. Accessed 26 Jan 2021.
- Bird Life International. IUCN Red List for birds. 2020b. <http://www.birdlife.org>. Accessed 26 Jan 2021.
- Brown JL. SDMtoolbox: a python-based GIS toolkit for landscape genetic, biogeographic and species distribution model analyses. *Methods Ecol Evol*. 2014;5:694–700.
- Burnham KP, Anderson DR. Model selection and multi-model inference: a practical information-theoretic approach. New York: Springer; 2002.
- Capainolo P, Perktas U, Fellowes MDE. Late Quaternary range dynamics in the Common Grackle *Quiscalus quiscula*. *Ardea*. 2020;108:95–104.
- Costa GC, Nogueira C, Machado RB, Colli GR. Sampling bias and the use of ecological niche modeling in conservation planning: a field evaluation in a biodiversity hotspot. *Biol Conserv*. 2010;119:883–99.
- Crosby GT. Spread of the cattle egret in the Western Hemisphere. *Bird-Banding*. 1972;43:205–12.
- Davis AJ, Jenkinson LS, Lawton JH, Shorrocks B, Wood S. Making mistakes when predicting shifts in species range in response to global warming. *Nature*. 1998;391:783–6.
- Dunn PO, Møller AP, editors. Effects of climate change on birds. Oxford: Oxford University Press; 2019.
- Elith J, Leathwick JR. Species distribution models: ecological explanation and prediction across space and time. *Annu Rev Ecol Evol Syst*. 2009;40:677–97.
- Elith J, Phillips SJ, Hastie T, Dudík M, Chee YE, Yates CJ. A statistical explanation of MaxEnt for ecologists. *Divers Distrib*. 2011;17:43–57.
- Fairbridge RW. Climatology of a glacial cycle. *Quaternary Res*. 1972;2:283–302.
- Gaüzère P, Jiguet F, Devictor V. Rapid adjustment of bird community compositions to local climatic variations and its functional consequences. *Glob Chang Biol*. 2015;21:3367–78.
- Gibson DD, Kessel B. Seventy-four new avian taxa documented in Alaska 1976–1991. *Condor*. 1992;94:454–67.
- Gill RE Jr, Handel CM, Ruthrauff DR. Intercontinental migratory connectivity and population structuring of Dunlins from western Alaska. *Condor*. 2013;115:525–34.
- Hewitt G. The genetic legacy of the Quaternary ice ages. *Nature*. 2000;405:907–13.
- Hitch AT, Leberg PL. Breeding distributions of North American bird species moving north as a result of climate change. *Conserv Biol*. 2007;21:534–9.
- Huntington CE. Hybridization in the Purple Grackle *Quiscalus quiscula*. *Syst Zool*. 1952;1:149–70.
- Huntley B. Consequences of climatic change for distributions. In: Dunn PO, Møller AP, editors. Effects of climate change on birds. Oxford: Oxford University Press; 2019. p. 165–84.

- IPCC. Representative Concentration Pathways (RCPs). 2019. https://sedac.ciesin.columbia.edu/ddc/ar5_scenario_process/RCPs.html. Accessed 26 Jan 2021.
- International Rusty Blackbird Technical Group (IRBTG). Understanding declines in the Rusty Blackbird (*Euphagus carolinus*): an indicator of Wooded Wetland Health. A research strategy and proposal from the International Rusty Blackbird Technical Group (IRBTG), July 2005. 2009. <https://www.fws.gov/migratorybirds/pdf/management/focal-species/RustyBlackbird.pdf>. Accessed 26 Jan 2021.
- Jansen E, Overpeck J, Briffa KR, Duplessy J-C, Joos F, Masson-Delmotte V, et al. (eds). Climate change 2007: the physical science basis. Working group I contribution to the fourth assessment report of the intergovernmental panel on climate change (IPCC). Cambridge: Cambridge University Press; 2007.
- Jansson R, Dynesius M. The fate of clades in a world of recurrent climatic change: Milankovitch oscillations and evolution. *Annu Rev Ecol Evol Syst*. 2002;33:741–77.
- Jaramillo A, Burke P. New world blackbirds. London: Christopher Helm; 1999.
- Kass JM, Vilela B, Aiello-Lammens ME, Muscarella R, Merow C, Anderson NP. Wallace: a flexible platform for reproducible modeling of species niches and distributions built for community expansion. *Methods Ecol Evol*. 2018;9:1151–6.
- Kreyling J, Schmid S, Aas G. Cold tolerance of tree species is related to the climate of their native ranges. *J Biogeogr*. 2015;42:156–66.
- Lenington S, Scola R. Competition between Red-winged Blackbirds and Common Grackles. *Wilson Bull*. 1982;94:90–3.
- Matsuoka SM, Shaw D, Sinclair PH, Johnson JA, Corcoran RM, Dau NC, et al. Nesting ecology of the Rusty Blackbird in Alaska and Canada. *Condor*. 2010;112:810–24.
- Mousazade M, Ghanbarian G, Pourghasemi HR, Safaeian R, Cerdà A. Maxent data mining technique and its comparison with a bivariate statistical model for predicting the potential distribution of *astragalus fasciculifolius* boiss in Fars, Iran. *Sustainability*. 2019;11:1–23.
- Oswald JA, Harvey MG, Remsen RC, Foxworth DU, Dittmann DL, Cardiff SW, et al. Evolutionary dynamics of hybridization and introgression following the recent colonization of Glossy Ibis (*Aves: Plegadis falcinellus*) into the New World. *Mol Ecol*. 2019;28:1675–91.
- Parmesan C. Ecological and evolutionary responses to recent climate change. *Annu Rev Ecol Evol Syst*. 2006;37:637–69.
- Peer BD, Bollinger EK. Common Grackle (*Quiscalus quiscula*). In: Poole A, Gill F, editors. The birds of North America, No. 271. The Academy of Natural Sciences, Philadelphia, PA, and The American Ornithologists' Union, Washington DC, USA. 1997. <https://doi.org/10.2173/tbna.271.p>.
- Peer BD, Bollinger EK. Ecology and management of the Common Grackle. In: Linz GM, Avery ML, Dolbeer RA, editors. Ecology and management of Blackbirds (Icteridae) in North America: Boca Raton, Fla. Los Angeles: CRC Press; 2017. p. 65–76.
- Peer BD, Bollinger EK. Explanations for the infrequent cowbird parasitism on Common Grackles. *Condor*. 1997b;99:151–61.
- Perktaş U. The dynamics of historical and recent range shifts in the ruffed grouse (*Bonasa umbellus*). *J Ornithol*. 2021;162:43–52.
- Perktaş U, Elverici C. Climate-driven range shifts of the Sharp-tailed Grouse *Tympanuchus phasianellus*. *Acta Ornithol*. 2020;54:213–22.
- Peterson AT. Projected climate change effects on Rocky Mountain and Great Plains birds: generalities of biodiversity consequences. *Glob Change Biol*. 2003;9:647–55.
- Peterson AT, Ortega-Huerta MA, Bartley J, Sánchez-Cordero V, Soberón J, Buddemeier RH, et al. Future projections for Mexican faunas under global climate change scenarios. *Nature*. 2002;416:626–9.
- Philander SG. Encyclopedia of global warming and climate change: 2008, AE, vol. 1. Thousand Oaks: SAGE Publications; 2008.
- Phillips SJ, Anderson RP, Schapire RE. Maximum entropy modeling of species geographic distributions. *Ecol Modell*. 2006;190:231–59.
- Price J. Modelling the potential impacts of climate change on the summer distributions of Massachusetts passerines. *Bird Observer*. 2000;28:224–30.
- Root TL, Price JT, Hall KR, Schneider SH, Rosenzweig C, Pounds JA. Fingerprints of global warming on wild animals and plants. *Nature*. 2003;421:57–60.
- Schwalm CR, Glendon S, Duffy PB. RCP8.5 tracks cumulative CO₂ emissions. *Proc Natl Acad Sci USA*. 2020;117:19656–7.
- Stewart JR, Lister AM, Barnes I, Dalén L. Refugia revisited: individualistic responses of species in space and time. *Proc R Soc B*. 2010;277:661–71.
- Strassburg MD. The evaluation of Christmas Bird Counts as an indicator of population trends and habitat selection in blackbirds and starlings. Master's Thesis. Fargo: North Dakota State University; 2011.
- Tomlinson S, Lewandrowski W, Elliott CP, Miller BP, Turner SR. High-resolution distribution modeling of a threatened short-range endemic plant informed by edaphic factors. *Ecol Evol*. 2019;10:763–77.
- Wehtje W. The range expansion of the great-tailed grackle (*Quiscalus mexicanus* Gmelin) in North America since 1880. *J Biogeogr*. 2003;30:1593–607.
- Yang SY, Selander RK. Hybridization in the grackle *Quiscalus quiscula* in Louisiana. *Syst Zool*. 1968;17:107–43.

Ready to submit your research? Choose BMC and benefit from:

- fast, convenient online submission
- thorough peer review by experienced researchers in your field
- rapid publication on acceptance
- support for research data, including large and complex data types
- gold Open Access which fosters wider collaboration and increased citations
- maximum visibility for your research: over 100M website views per year

At BMC, research is always in progress.

Learn more biomedcentral.com/submissions

