

Late Holocene mangrove dynamics of the Doce River delta, southeastern Brazil: implications for the understanding of mangrove resilience to sea-level changes and channel dynamics

Article

Supplemental Material

da Silva, F. A. B., Franca, M. C., Cohen, M. C. L., Pessenda, L. C. R., Mayle, F. E. ORCID: <https://orcid.org/0000-0001-9208-0519>, Fontes, N. A., Lorente, F. L., Buso Junior, A. A., de C. Piccolo, M., Bendassolli, J. A., Macario, K. and Culligan, N. (2022) Late Holocene mangrove dynamics of the Doce River delta, southeastern Brazil: implications for the understanding of mangrove resilience to sea-level changes and channel dynamics. *Palaeogeography, Palaeoclimatology, Palaeoecology*, 600. 111055. ISSN 0031-0182 doi: <https://doi.org/10.1016/j.palaeo.2022.111055> Available at <https://centaur.reading.ac.uk/105939/>

It is advisable to refer to the publisher's version if you intend to cite from the work. See [Guidance on citing](#).

To link to this article DOI: <http://dx.doi.org/10.1016/j.palaeo.2022.111055>

Publisher: Elsevier

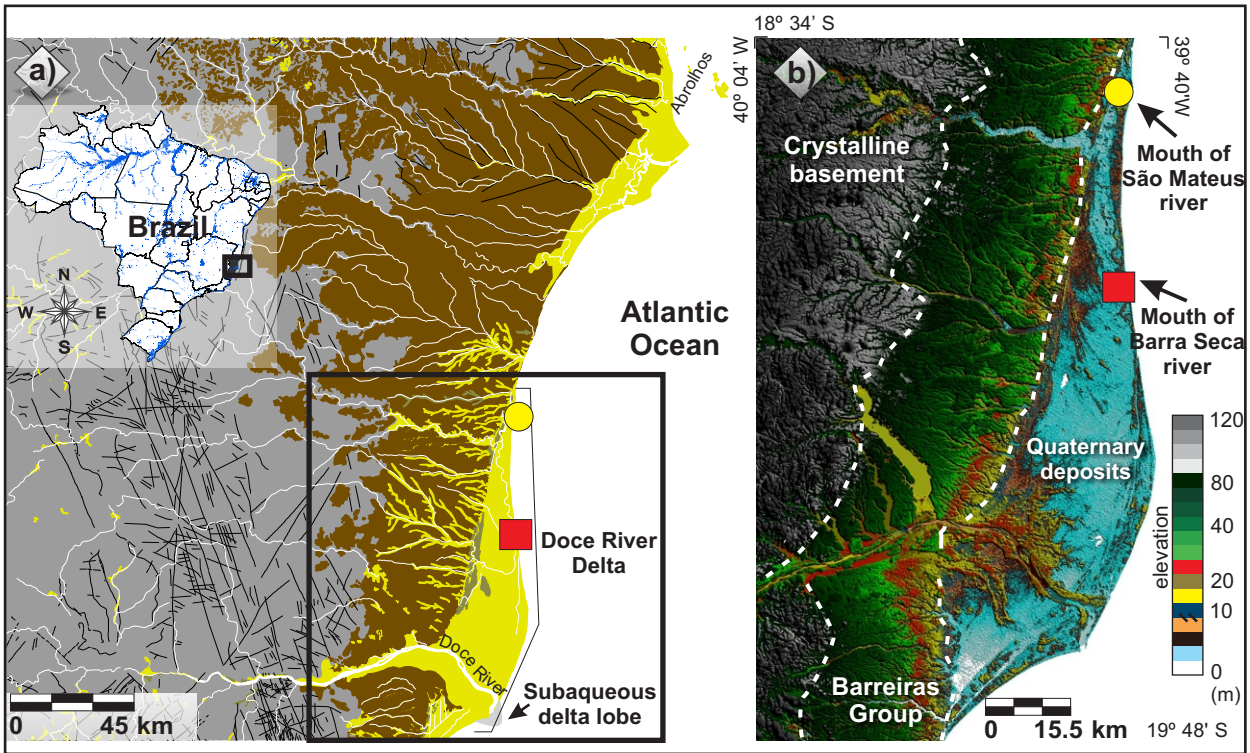
All outputs in CentAUR are protected by Intellectual Property Rights law, including copyright law. Copyright and IPR is retained by the creators or other copyright holders. Terms and conditions for use of this material are defined in the [End User Agreement](#).

www.reading.ac.uk/centaur

CentAUR

Central Archive at the University of Reading

Reading's research outputs online



Miocene Barreiras Formation
 Pleistocene deposits
 Holocene deposits

