

Using a long short-term memory (LSTM) neural network to boost river streamflow forecasts over the western United States

Article

Published Version

Creative Commons: Attribution 4.0 (CC-BY)

Open Access

Hunt, K. M. R. ORCID: <https://orcid.org/0000-0003-1480-3755>,
Matthews, G. R., Pappenberger, F. and Prudhomme, C. (2022)
Using a long short-term memory (LSTM) neural network to
boost river streamflow forecasts over the western United
States. *Hydrology and Earth System Sciences*, 26 (21). pp.
5449-5472. ISSN 1027-5606 doi: <https://doi.org/10.5194/hess-26-5449-2022> Available at
<https://centaur.reading.ac.uk/108387/>

It is advisable to refer to the publisher's version if you intend to cite from the work. See [Guidance on citing](#).

To link to this article DOI: <http://dx.doi.org/10.5194/hess-26-5449-2022>

Publisher: Copernicus

All outputs in CentAUR are protected by Intellectual Property Rights law, including copyright law. Copyright and IPR is retained by the creators or other copyright holders. Terms and conditions for use of this material are defined in the [End User Agreement](#).

www.reading.ac.uk/centaur

CentAUR

Central Archive at the University of Reading

Reading's research outputs online



Using a long short-term memory (LSTM) neural network to boost river streamflow forecasts over the western United States

Kieran M. R. Hunt^{1,2}, Gwyneth R. Matthews^{1,3}, Florian Pappenberger³, and Christel Prudhomme^{3,4,5}

¹Department of Meteorology, University of Reading, Reading, UK

²National Centre for Atmospheric Sciences, University of Reading, Reading, UK

³European Centre for Medium-Range Weather Forecasts, Reading, UK

⁴Department of Geography and Environment, Loughborough University, Loughborough, UK

⁵UK Centre for Ecology and Hydrology, Wallingford, UK

Correspondence: Kieran M. R. Hunt (k.m.r.hunt@reading.ac.uk)

Received: 4 February 2022 – Discussion started: 8 February 2022

Revised: 13 October 2022 – Accepted: 19 October 2022 – Published: 1 November 2022

Abstract. Accurate river streamflow forecasts are a vital tool in the fields of water security, flood preparation and agriculture, as well as in industry more generally. Traditional physics-based models used to produce streamflow forecasts have become increasingly sophisticated, with forecasts improving accordingly. However, the development of such models is often bound by two soft limits: empiricism – many physical relationships are represented empirical formulae; and data sparsity – long time series of observational data are often required for the calibration of these models.

Artificial neural networks have previously been shown to be highly effective at simulating non-linear systems where knowledge of the underlying physical relationships is incomplete. However, they also suffer from issues related to data sparsity. Recently, hybrid forecasting systems, which combine the traditional physics-based approach with statistical forecasting techniques, have been investigated for use in hydrological applications. In this study, we test the efficacy of a type of neural network, the long short-term memory (LSTM), at predicting streamflow at 10 river gauge stations across various climatic regions of the western United States. The LSTM is trained on the catchment-mean meteorological and hydrological variables from the ERA5 and Global Flood Awareness System (GloFAS)–ERA5 reanalyses as well as historical streamflow observations. The performance of these hybrid forecasts is evaluated and compared with the performance of both raw and bias-corrected output from the Copernicus Emergency Management Service (CEMS) physics-based GloFAS.

Two periods are considered, a testing phase (June 2019 to June 2020), during which the models were fed with ERA5 data to investigate how well they simulated streamflow at the 10 stations, and an operational phase (September 2020 to October 2021), during which the models were fed forecast variables from the European Centre for Medium-Range Weather Forecasts (ECMWF) Integrated Forecasting System (IFS), to investigate how well they could predict streamflow at lead times of up to 10 d.

Implications and potential improvements to this work are discussed. In summary, this is the first time an LSTM has been used in a hybrid system to create a medium-range streamflow forecast, and in beating established physics-based models, shows promise for the future of neural networks in hydrological forecasting.

1 Introduction

Accurate forecasts of river streamflow are vital across a range of sectors, including, but not limited to, agriculture, water security, recreation, disaster management, and heavy industry. As such, modelling streamflow as a function of observable hydrological and meteorological variables has been the subject of focused study for nearly 200 years and has intensified considerably over the past few decades as demands on water resources continue to increase dramatically (Beven, 2011).

The earliest attempt (Mulvaney, 1851) comprised a simple linear relationship between streamflow and catchment

rainfall, derived using linear regression. Key early developments then split the catchment into regions based on estimated travel time to the gauge (Imbeaux, 1892; Ross, 1921) and included more variables in the regression model (Linsley et al., 1949). One of the first physics-based streamflow models was developed by Horton (1933), who considered the role of excess soil filtration in runoff. Since then, physics-based models have largely dominated, particularly with continued improvements to process understanding (e.g. Freeze and Harlan, 1969), computing power (e.g. Kollet et al., 2010; Schiemann et al., 2018), observation systems – including discharge data vital for model calibration (e.g. Newman et al., 2015), and remote sensing (e.g. Huffman et al., 1995; Robock et al., 2000).

Although physics-based models have improved substantially they are still currently limited by lack of process understanding, lack of – particularly subsurface – data, and inadequate grid resolution (Wood et al., 2011). Such problems can be overcome by the application of artificial neural networks, which can produce highly accurate simulations of physical systems even if the underlying physical relationships are not known. In hydrology, a particular type of artificial neural network, known as a long short-term memory network (LSTM; Hochreiter and Schmidhuber, 1997; Gers et al., 2000), has become increasingly popular due to its ability to process sequential data (Shen and Lawson, 2021).

LSTMs are a special case of so-called recurrent neural networks (RNNs), i.e. artificial neural networks that are capable of processing data containing temporal sequences. The basic feature of RNNs is a feedback loop that allows the network to retain information over time. However, due to their relatively simple construction, RNNs do not readily retain long-term temporal dependencies (Hochreiter and Schmidhuber, 1997). This is overcome in LSTMs by the addition of a special unit, known as a memory cell or the forget gate, that can preserve information indefinitely, allowing LSTMs to learn long-term dependencies that other RNNs cannot. In modelling river discharge over the United States, Kratzert et al. (2018) showed that LSTMs vastly outperform conventional RNNs.

For the reasons outlined above, it is unsurprising that LSTMs are being increasingly used to explore complicated hydrological problems including modelling river streamflow. In this regard, studies fall into two categories – either seeking to create a model capable of replicating existing streamflow observations, or seeking to create a model capable of forecasting streamflow at some future time. This distinction is minor in a machine learning context, since replication is a form of prediction; however, they have important distinctions in their application to the hydrological community. Several highly illustrative studies approach the former topic. In particular, a series of papers published by researchers at Johannes Kepler University Linz (Kratzert et al., 2018, 2019a, b; Klotz et al., 2022; Gauch et al., 2021b) demonstrated the remarkable ability of LSTMs to simulate daily streamflow in catchments across the United States

and in the quantification of streamflow uncertainty. Extending this work, Gauch et al. (2021a) showed that reanalysis-trained LSTMs could predict streamflow at any given temporal resolution, and at multiple resolutions simultaneously. These studies demonstrated that simple LSTM architectures (i.e. unstacked) performed as well as stacked ones in simulating streamflow. They also showed that better performance could be achieved by training a single LSTM over many basins and including data on basin geography than by individual LSTMs trained on a per-basin basis, even extending to good performance in ungauged basins.

The latter topic has proven more challenging, with only a handful of studies trying (to the authors' knowledge) to use LSTMs to predict streamflow (Slater et al., 2021). The most basic of these rely on rivers where streamflow has a strong annual cycle and large lagged autocorrelation (i.e. high persistence), using only antecedent streamflow data from the same site. Such studies have mixed, although promising results (de Melo et al., 2019; Sahoo et al., 2019; Sudriani et al., 2019; Zhu et al., 2020). More advanced models also incorporate upstream data, either just streamflow at different sites (Silva et al., 2021), or additionally precipitation (Le et al., 2019; Hu et al., 2020) with improved results. Le et al. (2019), for a case study in Vietnam, and Silva et al. (2021), for a case study in Brazil, achieved good results at 3 and 5 d lead times respectively. Ding et al. (2019) produced perhaps the most sophisticated LSTM-based hydrological forecast model to date. A LSTM that ingested European Centre for Medium-Range Weather Forecasts (ECMWF) forecasts of precipitation, soil moisture, and other variables to produce a runoff forecast around the confluence region of the Lech and Danube rivers. They verified forecasts up to lead times of 9 h, finding a Nash–Sutcliffe efficiency of 0.71, rising to 0.77 after the inclusion of an attention mechanism. The use of the ECMWF forecasts (created using a physics-based numerical weather prediction system) to feed an LSTM (a machine learning method) puts the Ding et al. (2019) study into the realm of hybrid forecasting.

The definition of a hybrid forecasting system is broad and currently blurry in the literature, partly due to the cross-disciplinary nature of the topic and partly due to the wide range of opportunities for integrating the two approaches into a single forecasting system (see e.g. Düben et al., 2021). Generally speaking, in hydrology, a hybrid hydrological forecasting system is one which incorporates physically based and statistical or machine learning methods. Combining the contrasting approaches is anticipated to provide superior forecasts by compensating for the limitations of each approach when used independently (some of which are discussed above). However, this definition is subjective and depends on where you draw the boundaries around the hydrological forecasting system. Is the numerical weather prediction considered part of the hydrological forecasting system or as input data (e.g. Ding et al., 2019; Liang et al., 2018)? If the model calibration of a physical model is aided by ma-

chine learning is this process included in the definition of a hybrid system (e.g. Teweldebrhan et al., 2020)? Would deep-learning-based quality control of observations be included within a hybrid system (e.g. Sha et al., 2021)? Other potential inclusions into the class of hybrid forecasting systems are machine-learning aided data assimilation (Boucher et al., 2019; He et al., 2020; Liu et al., 2021), and commonly post-processing (e.g. Liu et al., 2022; Sharma et al., 2021; Lee and Ahn, 2021; Frame et al., 2021; Nearing et al., 2020). Answering these questions is beyond the scope of this study and requires a discipline-wide collaboration to definitively define a hydrological forecasting system. Therefore, we restrict our discussions to the less disputed part of the hydrological forecasting chain: the representation of the runoff-routing processes.

The hybridisation of hydrological models within the forecasting chain can be achieved in multiple ways. The simplest approach would be to combine the output from two hydrological models, one physically based, and one machine learning based (Wagena et al., 2020; Booker and Woods, 2014). Alternatively, machine-learning-based and process-based models can be coupled. This can either be sequentially (e.g. Noori and Kalin, 2016) or in parallel with sub-models representing different processes (Reichstein et al., 2019; Bennett and Nijssen, 2021; Meng et al., 2016; Okkan et al., 2021).

More recently, more integrated methods of hybridisation have been introduced to hydrological modelling. Theory-guided (or physics-informed) machine learning approaches (Karpatne et al., 2017; Raissi et al., 2019) aim to overcome the interpretability issues identified with “black-box” machine learning methods and constrain the output to theoretically plausible outputs (Xu et al., 2021; Chadalawada et al., 2020). Hoedt et al. (2021) included mass conservation as a constraint into an LSTM architecture and found that for streamflow, although a decrease in the Nash–Sutcliffe efficiency metric was seen, the mass-conserved LSTM better predicted extreme flow values (e.g. flood peaks). However, Frame et al. (2022) found that the addition of the mass constraint reduced the skill when predicting extreme values suggesting further work is necessary. Alternatively, other studies have used neural networks in process-based models to solve differential equations more efficiently whilst allowing interpretability of the output (Höge et al., 2022; Rackauckas et al., 2020; Raissi et al., 2020).

In this study, we seek to expand on these previous efforts and develop an LSTM capable of providing skilful river streamflow forecasts at lead times of up to 10 d at 10 stations across the western United States. We will train the model mainly using meteorological variables from the ERA5 reanalysis (Sect. 3.1) and hydrological variables from Global Flood Awareness System (GloFAS)–ERA5 (Sect. 3.3, meaning that we are not at the mercy of potentially sparse observational data but will use official gauge observations (Sect. 2) as the target to give optimal calibration. Once trained, the LSTM will be used to produce forecasts by replacing ERA5

inputs with forecast variables from the ECMWF Integrated Forecast System (IFS; Sect. 3.2). Again the use of the IFS means that the LSTM forecasts are not vulnerable to data latency of observations in an operational setting. Additionally, since the IFS is used to drive the ERA5 reanalysis, any significant climatological biases in one are likely to be present in the other. Since we are training the model with ERA5 data, such biases – so long as they are consistent between the two products – will be mitigated as the LSTM either applies an internal bias correction or gives the field a low weighting in the input layer. We train the model on publicly available ERA5, rather than IFS hindcasts, so that our methods can be completely reproduced by any interested reader. The forecasts will be made under operational time and data constraints for a 13-month period (September 2020 to October 2021) and the results compared with GloFAS (Sect. 3.3), a physics-based streamflow forecast produced by ECMWF, a new, bias-corrected version of GloFAS (Sect. 4.3), and a simple persistence model. The core aims of this study are to determine (a) whether such an LSTM-based hybrid system can provide skilful streamflow forecasts, (b) whether a hybrid system can perform better than existing state-of-the-art physics-based systems, and (c) whether advanced bias-correction techniques can improve the skill of physics-based models. An important caveat here is that 7 of the 10 catchments are smaller than the recommended usage threshold for GloFAS (2000 km²), and so we would probably expect to see improvement when adding degrees of freedom through bias correction or hybridising with an LSTM.

The study is laid out as follows: we discuss the study region and the climatological characteristics of the 10 gauge stations in Sect. 2. We then describe the data used in Sect. 3 and methods – including the bias-correction algorithm and the LSTM set-up – in Sect. 4. The results section is split into two parts, verification of a testing phase – where the models are driven with ERA5 – in Sect. 5.1, and verification of the operational phase – where the models are driven with IFS output – in Sect. 5.2. Finally, we discuss potential applications and improvements to our work in Sect. 6 and conclude with a summary in Sect. 7.

2 Study region and choice of stations

The choice of study region and stations was dictated by the US Department of Reclamation, part of whose remit is water security over the western half of the contiguous United States. Between September 2020 and September 2021, they sponsored a competition (<https://www.topcoder.com/community/streamflow>, last access: 1 October 2021) to predict streamflow at 10 locations (Fig. 1 and Table 1) at lead times of up to 10 d, into which we entered three forecasts, raw and bias-corrected GloFAS and an LSTM, which are discussed in greater detail in Sect. 4 and which form the basis of this study.

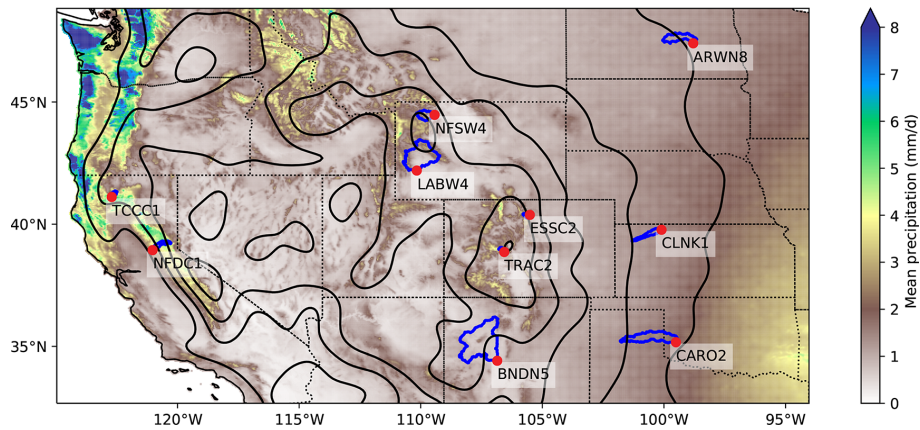


Figure 1. Locations of the 10 streamflow gauges (red) and their catchment basins (dark blue). Overlaid are the climatological precipitation (filled contours, 1981–2010, from PRISM), smoothed orography (black line contours at 500 m intervals) from ETOPO, and state boundaries (dotted black lines).

Table 1. Summary of the locations of the 10 river streamflow gauges used in this study. See also Fig. 1.

Location ID	USGS station number	Description	Longitude	Latitude
BNDN5	8353000	Rio Puerco near Bernardo, NM	−106.85	34.41
ARWN8	6468250	James River above Arrowwood Lake near Kensal, ND	−98.80	47.40
TCCC1	11523200	Trinity River above Coffee Creek near Trinity Center, CA	−122.70	41.11
CARO2	7301500	North Fork Red River near Carter, OK	−99.51	35.17
ESSC2	6733000	Big Thompson River above Lake Estes, CO	−105.51	40.38
NFDC1	11427000	North Fork American River at North Fork Dam, CA	−121.02	38.94
LABW4	9209400	Green River near La Barge, WY	−110.16	42.19
CLNK1	6847900	Prairie Dog Creek above Keith Sebilus Lake, KS	−100.10	39.77
TRAC2	9107000	Taylor River above Taylor Park, CO	−106.57	38.86
NFSW4	6279940	North Fork Shoshone River at Wapiti, WY	−109.43	44.47

The 10 gauge locations are shown in the context of climatological precipitation (from PRISM; Daly et al., 2008) and topography (from ETOPO1 Amante and Eakins, 2009) in Fig. 1, along with their respective catchment basins in blue. The 10 locations represent a considerable diversity in climate and environment: two stations (TCCC1, NFDC1) are on the windward side of the Sierra Nevada, a region of high climatological rainfall, four (NFSW4, LABW4, ESSC2, TRAC2) are situated at high elevations along the Rockies, and four (ARWN8, CLNK1, CARO2, BNDN5) are in the relatively arid plains of the Midwest and south. These locations are summarised in Table 1.

Selected hydrological statistics are shown for each gauge in Table 2. These are computed over the entire measurement record for each gauge (minimum ~ 30 years) and reflect the variance in river characteristics chosen by the Bureau of Reclamation. Notably, only three stations (BNDN5, CARO2, LABW4) have a drainage basin whose area exceeds 2000 km²; this is the recommended threshold for GloFAS analysis, as basins smaller than this are not necessarily re-

solved by the underlying model. The remaining seven stations, therefore, provide us with a forecast challenge. As Table 2 shows, some gauges are in extremely arid locations (e.g. BNDN5) and some have a great quantity of missing data (e.g. ARWN8), both of which present potential difficulties in the training and operational use of the LSTM. Overall (Table 3), the basin-average meteorology varies considerably between the gauges, reflecting their geographical diversity.

3 Data

3.1 ERA5

The Copernicus Climate Change Service (C3S) at the ECMWF produces the five-generation ERA5 atmospheric reanalyses of global climate covering the period since January 1950 (Hersbach et al., 2020). Data from ERA5 (available from <https://cds.climate.copernicus.eu/#!/search?text=ERA5&type=dataset> (last access: 28 October 2022)) cover the entire globe on a 30 km grid and resolve the atmosphere

Table 2. Summary of the climatological hydrological parameters of the 10 river streamflow gauges used in this study. “Missing” indicates the fraction of measurements since 1 January 1990 recorded either as “ice” or some other non-numeric value. Data from USGS and DWR, as outlined in Sect. 3.4.

Station ID	Basin area (km ²)	Elevation (m)	Discharge (m ³ s ⁻¹)				Missing (%)
			25 %	Median	Mean	75 %	
BNDN5	13 739	1439	0.000	0.000	0.368	0.042	23.8
ARWN8	1165	439	0.195	1.44	8.24	9.34	50.6
TCCC1	386	773	12.1	17.2	20.5	24.1	1.6
CARO2	5367	508	0.821	1.95	3.28	3.82	9.0
ESSC2	357	2290	0.680	1.76	4.47	5.30	22.2
NFDC1	885	217	24.2	37.4	49.0	53.2	4.1
LABW4	10 123	1987	18.3	21.2	26.0	28.6	37.1
CLNK1	1527	712	0.059	0.122	0.142	0.187	14.3
TRAC2	331	2847	0.963	1.05	1.19	1.39	33.3
NFSW4	1810	1700	4.76	6.17	8.55	10.1	18.5

Table 3. Summary of the climatological meteorological parameters of the 10 river streamflow gauges used in the competition. Data from ERA5, as outlined in Sect. 3.1.

Station ID	Mean 2 m temp. (°C)			Mean precip. (mm d ⁻¹)		
	Annual	Jan	Jul	Annual	Jan	Jul
BNDN5	10.9	-1.6	22.7	1.0	0.8	1.8
ARWN8	4.9	-12.7	20.6	2.0	0.8	3.3
TCCC1	8.0	-0.4	20.2	3.4	6.6	0.5
CARO2	15.6	3.5	27.6	1.8	0.9	1.6
ESSC2	1.9	-8.4	14.8	2.1	1.3	3.1
NFDC1	10.2	2.2	21.4	4.3	8.6	0.1
LABW4	1.6	-9.9	16.4	1.5	1.7	0.7
CLNK1	12.0	-1.0	25.8	1.9	0.6	2.8
TRAC2	-0.9	-11.4	11.7	1.7	1.7	1.7
NFSW4	0.0	-10.6	14.2	2.0	2.0	1.2

on 137 levels from the ground up to 80 km in altitude. At reduced spatial and temporal resolutions, ERA5 includes uncertainty information for all variables. We use catchment-mean ERA5 variables (near-surface, surface, and subsurface) as training data for the LSTM.

3.2 IFS

The study uses the ECMWF IFS (version CY47R1). This IFS was run at full complexity with the configuration used for operational weather forecasts at ECMWF as well as for the reanalysis (ERA5). The system is described in detail (<https://www.ecmwf.int/en/publications/ifs-documentation>, last access: 1 August 2022) and has a turbulent diffusion and exchange with the surface represented by the Monin–Obukhov similarity theory in the surface layer and an eddy-diffusivity mass-flux (EDMF) framework above the surface layer and includes a mass-flux shallow convection, a multi-layer, multi-tiled land-surface scheme (HTESSEL), a five-

species cloud microphysics model, and a shortwave and longwave radiation scheme including cloud radiation interactions. IFS data, up to a 10 d lead time, are used as input to the LSTM when it is run operationally (available from <https://apps.ecmwf.int/archive-catalogue/?class=od&stream=oper&expver=1>, last access: 28 October 2022). Each morning throughout the operational period (September 2020 to October 2021), the control member (the member generated with unperturbed initial conditions) of the ensemble was downloaded using the Meteorological Archival and Retrieval System (MARS) API. This comprises more than 20 variables, globally, at a 6-hourly frequency and resolution of $0.1 \times 0.1^\circ$. Having to download and pre-process this large volume of data within the time constraints allowed limited us to using only one ensemble member. To retain more realistic variability at longer lead times, we chose to use the control member, rather than the ensemble mean. The full list of variables used is given in Sect. 4.4.

3.3 GloFAS

The worldwide GloFAS (Harrigan et al., 2020), created collaboratively by the European Commission and ECMWF, is a global hydrological forecasting and monitoring system that is not constrained by administrative or political boundaries. It combines cutting-edge meteorological predictions with a hydrological model, and due to its continental-scale set-up, it can deliver information on upstream river conditions as well as continental and global overviews to downstream nations. Since 2011, GloFAS has been producing daily ensemble flood predictions and monthly seasonal streamflow outlooks since November 2017 and is run operationally as a component of the Copernicus Emergency Management Service. For dates prior to 25 May 2021 (i.e. all of the testing period and most of the operational period), we use GloFAS version 2.1 (Zsoter et al.,

2019a); thereafter, we use GloFAS version 3.1 (Zsoter et al., 2021). GloFAS products are freely available from its dedicated Information System, open to all following registration (<https://www.globalfloods.eu/>, last access: 1 August 2022) and its hydrological data from Copernicus Climate Data Store (<https://cds.climate.copernicus.eu#!/home>, last access: 1 August 2022). More details on the GloFAS service can be found on the dedicated wiki (<https://confluence.ecmwf.int/display/CEMS/Global+Flood+Awareness+System>, last access: 1 August 2022). Two sets of GloFAS data were used: GloFAS-ERA5 (Zsoter et al., 2019b), a global modelled dataset of daily river discharge created by forcing the hydrological model with the ERA5 reanalysis, and GloFAS forecasts (Zsoter et al., 2019a, 2021), an ensemble of global daily river discharge forecasts, forced by ensemble forecasts from the ECMWF IFS. As with the IFS above, for forecasts we use the control member up to a lead time of 10 d, downloaded using the MARS API (available from <https://apps.ecmwf.int/archive-catalogue/?class=ce&stream=wfas>, last access: 28 October 2022). The control member of GloFAS is the ensemble member produced using the control member of the IFS ensemble forecast. These data are global and have daily frequency and a resolution of $0.1 \times 0.1^\circ$.

3.4 Observational station data

Observational gauge data were downloaded from <https://dwr.state.co.us/Tools/Stations> (last access: 1 December 2021) (for ESSC2) and <https://waterdata.usgs.gov/nwis> (last access: 1 December 2021) (all others). These data are available at 3-hourly resolution, published in near real time, and mostly with coverage from about 1990 onwards. Coverage and streamflow data are given in Table 2. These data are used to train the LSTM and calibrate the parameters for both stages of the bias-correction algorithm (see Sect. 4.3), and later for forecast verification.

4 Methods

In this section we describe the verification and forecasting method used in this study. Three forecasts are created each day with 6-hourly timesteps out to a maximum lead time of 10 d. The overall workflow used to create these forecasts is shown in Fig. 2. More detail is provided in the following sections.

First, we describe the different time periods used in this study to train and validate the LSTM and bias-correction methods.

4.1 Training, testing, and operational forecasting periods

We define three periods which are used consistently throughout the study.

- The *training period* runs from January 1990 to June 2019. Although some stations have observational data prior to 1990, this start date was chosen to ensure a consistent length of training dataset across all gauges and to reduce the effect of spurious or sparse data on the training algorithms. The end date was chosen so that a 12-month testing period was available before the start of the operational forecasting period. The same training period and dataset are used for the testing period runs from June 2019 to June 2020, fixed as a 12-month period that ended just before the operational phase was due to begin.
- The *operational forecasting period* runs for 13 months from September 2020 to October 2021. The start and end dates were fixed by the competition.

4.2 Verification metrics

The Kling–Gupta efficiency (KGE, Gupta et al., 2009; Kling et al., 2012) is used to evaluate the performance of the forecasts. The KGE is defined as

$$\text{KGE} = 1 - \sqrt{(r - 1)^2 + (\beta - 1)^2 + (\gamma - 1)^2}, \quad (1)$$

where r is the Pearson's correlation coefficient, β is the bias ratio, and γ is the variability ratio. The bias and variability ratios are defined as

$$\beta = \frac{\mu_{\text{sim}}}{\mu_{\text{obs}}} \quad (2)$$

and

$$\gamma = \frac{\sigma_{\text{sim}}}{\sigma_{\text{obs}}}, \quad (3)$$

where μ_{sim} and σ_{sim} are the mean and standard deviation of the forecast discharge and μ_{obs} and σ_{obs} are the equivalent for the observed discharge. The KGE is widely used in hydrology as each component is a measure of a different type of error. The correlation coefficient, r , is a measure of temporal errors, the bias ratio, β indicates whether the discharge tends to be overpredicted or underpredicted by the forecast, and the variability ratio, γ measures whether the forecast captures the variability of the discharge magnitudes (Harrigan et al., 2020).

For a perfect forecast, each component (r , β , and γ) has a value of 1, giving $\text{KGE} = 1$. We also define two benchmarks. We define a “skilful” forecast as one where the KGE is higher than for a mean observed discharge benchmark, i.e. $\text{KGE} > 1 - \sqrt{2} \sim -0.414$. However, beating the long-term climatological mean is often easy (Pappenberger et al., 2015) and for certain flow regimes not even a helpful metric (Knoben et al., 2019) – although in our case, failing to surpass this benchmark does clearly indicate a lack of skill. To this end, we also arbitrarily define a “highly skilful” forecast as one where $\text{KGE} > \sqrt{2}/2 \sim 0.707$. This benchmark corresponds to a mean relative error in the three coefficients of

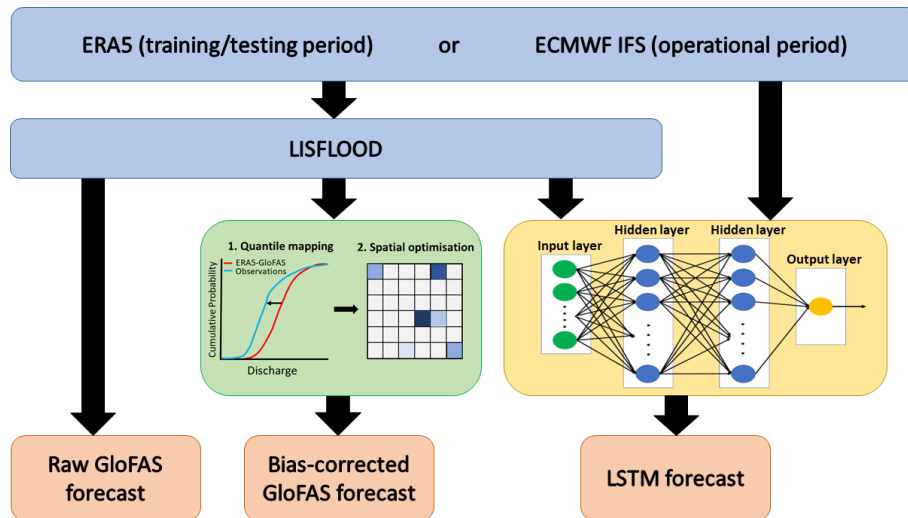


Figure 2. Schematic showing the workflow of the raw GloFAS forecasts, the bias-corrected GloFAS forecast, and the LSTM hybrid forecast.

about 17 %, or an error of about 30 % in one coefficient if the other two have zero error.

As an additional upper benchmark, we will also use persistence forecasts. Persistence forecasts can help us to determine which stations are “easy” or “hard” to forecast. For each station, these are constructed by persisting its mean observed discharge from the previous 48 h. For example, the 5 d persistence forecast for 23 May is given by the mean flow between 16 and 18 May. Evaluated at a fixed lead time, such persistence forecasts asymptotically approach the observed mean and standard deviation of the observations over long periods, typically giving them high KGEs.

As such, we also use the Nash–Sutcliffe efficiency Nash and Sutcliffe (NSE; 1970), which validates forecast or simulated flow based only on covariance with the observations, i.e.

$$\text{NSE} = 1 - \frac{\sum_t (Q_{\text{sim}}(t) - Q_{\text{obs}}(t))^2}{\sum_t (Q_{\text{obs}}(t) - \overline{Q_{\text{obs}}(t)})^2}, \quad (4)$$

where Q_{sim} is the simulated discharge, Q_{obs} is the observed discharge, and the overbar denotes a long-term average.

4.3 Bias correction

When undertaking bias correction, we have a range of choices of complexity – ranging from the very simple (additive/multiplicative) through increasingly advanced methods (e.g. quantile mapping). Here, we have the advantage of a long time series of training data and we want to maximise the forecast skill under the single constraint that forecast output from GloFAS is the only input. To that end, we employ both quantile mapping and spatial fitting techniques, splitting the bias correction into two serial algorithms, which we outline in the following subsections. Quantile mapping remaps

modelled values to reduce systematic bias and is a standard practice in meteorological and hydrological bias correction (Thrasher et al., 2012). The spatial optimisation method, newly developed for this work, provides an additional layer of bias correction, accounting for the fact that consistent spatiotemporal biases in hydrometeorological fields such as precipitation (should they exist), will result in consistent upstream/downstream biases in modelled streamflow – information that can be used to improve forecasts.

4.3.1 Quantile mapping

For the first stage of the bias correction we employ a basic quantile mapping method. The training period (January 1990 to June 2019) was extracted from the observational record. GloFAS-ERA5 streamflow was extracted for the same period, not only for the grid point in which the gauge of interest is located, but also for surrounding points in a $0.6^\circ \times 0.6^\circ$ box centred on the gauge. This gives a total of 36 locations (given the 0.1° spacing of global GloFAS output).

Iteratively, these are then quantile-mapped to the observed streamflow, that is

$$m_{\text{bc}}(i, t) = \tilde{q}_{\text{obs}}(q_{\text{raw}}(m_{\text{raw}}(i, t))), \quad (5)$$

where q is a function that maps streamflow to streamflow quantiles, \tilde{q} is its inverse, m_{raw} and m_{bc} are the raw and bias-corrected modelled streamflows respectively, and i and t are spatiotemporal indices. The forms of q_{raw} and q_{obs} are both computed using data from the training period and used unchanged for the testing period and operational forecasts. For example, consider a forecast streamflow value of $38.7 \text{ m}^3 \text{ s}^{-1}$ for a grid point containing the NFSW4 gauge. This value, were it in the GloFAS-ERA5 training period, would have a quantile value of 0.88. The 0.88th quantile (or 88th percentile) for observed streamflow at NFSW4 in the training

period is $77.0 \text{ m}^3 \text{ s}^{-1}$, and so this would be the value used for m_{bc} for that point at that forecast time. This makes sense, given that raw GloFAS underestimates high flow at NFSW4 by about 50 % (cf. Fig. 5). This quantile mapping technique is then carried out independently for each of the 36 grid points in the neighbourhood of each gauge, in each case mapping the GloFAS output for the specific grid point to the observations taken at the gauge (as opposed to observations taken at the grid point itself).

4.3.2 Spatial optimisation

We must then convert these forecast values over the neighbourhood grid points into a single forecast value. This was achieved through a simple linear summation, i.e.

$$m_{bc}(t) = \sum_i a_i m_{bc}(i, t), \quad (6)$$

where the coefficients a_i are to be determined.

To compute a_i , Eq. (6) was treated as an optimisation problem using the same training period as earlier (January 1990 to June 2019). Here, we seek to minimise

$$-NSE(m, o) - KGE(m, o), \quad (7)$$

i.e. the negative sum of the Kling–Gupta and Nash–Sutcliffe efficiencies over the training period. This optimisation was carried out subject to the constraint that $0 \leq a_i \leq 1$, to prevent unphysical behaviour, and computational noise. We minimise this combination of NSE and KGE because using NSE alone leaves the optimisation procedure vulnerable to incorrect local minima (e.g. an incorrect mean). However, we also found that using KGE alone tended to result in a bias correction that weighted correct mean and variance too highly compared with correlation, which is not useful for improving forecasts. We found that combining the two improved the weighting more in favour of correlation, while avoiding spurious local minima. Because the number of training datapoints is several orders of magnitude higher than the number of fitting parameters, and because of the constraints we impose on a_i , overfitting is very unlikely. This is confirmed later by validation over the testing period in Sect. 5.1.2.

A sequential quadratic programming technique was then used to compute the optimal bias matrix, a_i , due to its ability to obey constraints through Lagrange multipliers (Nocedal and Wright, 2006). The resulting (static) 6×6 matrices were computed and stored for each of the 10 gauges and are then used during each forecast to convert the quantile-mapped $n_t \times 6 \times 6$ forecasts into 1D vectors of length n_t .

As an example, the bias matrix for NFSW4 is

$$\begin{bmatrix} 0.089 & 0 & 0 & 0 & 0.138 & 0 \\ 0 & 0 & 0 & 0 & 0 & 0 \\ 0 & 0 & 0 & 0 & 0 & 0 \\ 0 & 0 & 0 & 0.754 & 0.009 & 0 \\ 0 & 0 & 0 & 0 & 0 & 0 \\ 0 & 0 & 0.001 & 0 & 0 & 0.023 \end{bmatrix}. \quad (8)$$

It is clear that the gauge is located in the grid point associated with $a_i = 0.754$; however, there are some additional contributions from nearby river points. Aside from the direct spatial error described in the previous subsection, these uncentred contributions (both in NFSW4 and at other stations) largely work to correct two smaller biases. Firstly, any local spatial bias in the ERA5 precipitation used to drive GloFAS-ERA5 that, for example, incorrectly increases the streamflow in a nearby channel. Secondly, a temporal bias in the streamflow, for example a downstream point may receive non-zero weighting if the modelled streamflow at the gauge is occurring later than in observations. This method has the additional advantage that no topological data are required.

Two final adjustments are made when the bias correction is run operationally. Firstly, the bias-corrected forecast is slightly relaxed towards the raw forecast ($q_{bc}^{new} = 0.25q_{raw} + 0.75q_{bc}^{old}$) to account for the different climatologies of GloFAS-ERA5 and GloFAS. GloFAS-ERA5 and GloFAS forecasts have different climatologies because they take meteorological input from different sources (ERA5 and IFS forecasts respectively). ERA5 and IFS themselves have different climatologies because, although they share the same driving model, ERA5 is a reanalysis and is nudged towards observations, whereas IFS forecasts are not. At the beginning of the operational phase, we noticed that the differences between GloFAS and GloFAS-ERA5 were leading to an overenthusiastic bias correction. The damping ratio was chosen by testing the effect of selected values in the range 0–1. Secondly, the whole forecast is then shifted by an additive δ , the difference between the mean observations and the mean day-1 forecasts over the 2 days prior to the forecast being issued.

4.4 LSTM

4.4.1 Summary

For the reader's reference, we provide a brief summary of the LSTM and its use. The LSTM is trained separately on each of the 10 basins in Table 1 using historical observations of streamflow and catchment-mean hydrological and meteorological variables from ERA5, giving 23 training variables (Table 5) and 1 target variable (streamflow) in total.

For each gauge, the LSTM is trained 100 times using random starting weights, with the mean of the five best-performing ensemble members from the training period used for validation during the testing period and forecasting during the forecast period. We differ from the suggested best practice of the JKU papers (see Introduction) of using a sin-

Table 4. Description of the LSTM architecture used in this study.

Layer	Input	Activation	Output
LSTM layer 1	(28, 23)	ReLU	(28, 50)
LSTM layer 2	(28, 50)	ReLU	(28, 50)
LSTM layer 3	(28, 50)	tanh	(1, 50)
Dense	(1, 50)	Linear	(1)

gle LSTM trained over many basins only because the majority of our code base had been written and models trained by the time those papers were published.

During the testing period, the LSTMs are run at 6-hourly timesteps, ingesting catchment-mean ERA5 variables from the preceding week at a 6-hourly resolution (giving an input sequence of length 28, fixed during the training process). This process results in a single estimate of streamflow for each timestep at each gauge. During the forecast period, we want to provide daily streamflow forecasts out to a 10 d lead time at 6-hourly resolution (i.e. 40 timesteps). To achieve this, at each gauge, the LSTM is run 40 times daily and the outputs concatenated to build the desired time series. For each timestep, the input sequence – still of length 28 – is constructed from catchment-mean IFS forecast variables. For example, a day-4 forecast to be issued on 15 March, valid on 19 March, would use an input sequence comprising data from the following IFS forecasts and lead times: 13 March day-0, 14 March day-0, 15 March day-0, 15 March day-1, 15 March day-2, 15 March day-3 and 15 March day-4.

4.4.2 Set-up and training

A number of hyperparameters are required for an LSTM and our selection was largely guided by previous literature (e.g. Kratzert et al., 2018). This included using mean squared error as our loss function, a learning rate of 0.001 with no decay, and a dropout of 0.1. For a full inventory of hyperparameters, see the code repository link at the end of the paper. We decided to use basin-mean variables so that the LSTM architecture would be consistent for each of the 10 gauges. With this set-up fixed, we tested stacked architectures with permutations of 5, 10, 20, 50, and 100 neurons in each LSTM layer. The best performance, judged using the testing period at each gauge, was achieved by the $50 \times 50 \times 50$ permutation, giving the architecture described in Table 4.

There are three stacked LSTM layers, one input and two hidden, each with 50 neurons, and a single neuron dense output layer. Following Kratzert et al. (2018) and other hydrological-LSTM papers, we use all surface or near-surface variables available in ERA5 that are potentially relevant to streamflow prediction. This gives us a total of 23 input variables, outlined in Table 5. For each of the 10 gauges, all variables except streamflow and the historic mean (which are taken as point data at the gauge location) are averaged over the catchment (see Fig. 1) at a 6-hourly frequency. We use a

7 d sequence for the input, giving the vector for each variable a length of 28 timesteps.

The LSTM was trained separately for each gauge over the training period (January 1990 to June 2018). For each gauge, the LSTM was trained 100 times using random starting weights over 10 epochs each. Figure 3 shows the training, validation, and testing of one ensemble member for the NFSW4 gauge – demonstrating that both the diurnal and seasonal cycles of this high-volume gauge are well simulated by individual ensemble members. Five additional ensemble members were also trained over 100 epochs to determine whether extending the number of epochs provided a significant performance gain. Fig. 4 shows the performance of each ensemble member of the LSTM for each gauge, computed over the testing period (June 2019 to June 2020). We see that there is no significant advantage to extending the number of epochs beyond 10 per member. The sensitivity of model skill to initial weights is quite large, in agreement with earlier studies (Kolen and Pollack, 1990; Graves et al., 2013), and could be reduced in future work by using regularisation techniques such as weight decay.

For the operational product, the mean is taken from the five best-performing ensemble members (those with the highest NSE in Fig. 4). For 8 out of the 10 gauges, this yields a better KGE over the testing period than using the best-performing single member, as we will see in Sect. 5.1. The LSTM is trained using data from ERA5 and GloFAS-ERA5, which we also use for the testing phase. Although this leaves the operational LSTM vulnerable to biases in the IFS, these are mitigated to an extent with the IFS being the driving model for ERA5. On the positive side, this means that evaluation of the ability of the forecasts will be conservative and thus more informative to potential users who, in not having access to decades of archived forecasts with a consistent model version, must also resort to using reanalysis training data.

5 Results

5.1 Evaluation over test period: June 2019 to June 2020

5.1.1 Raw GloFAS-ERA5

Figure 5 compares raw (i.e. not bias corrected) GloFAS-ERA5 streamflow to observations at each of the 10 stations over the test period (June 2019 to June 2020). Note that, for the test period, all models (including in Sect. 5.1.2 and 5.1.3), are driven with ERA5 data and output a single streamflow value per gauge per timestep. The product is skilful ($NSE > 0$ and $KGE > 1 - \sqrt{2}$) at 6 of the 10 stations and highly skilful ($KGE > \sqrt{2}/2$) at 2. The stations where raw GloFAS-ERA5 was not skilful (BNDN5, ARWN8, CARO2, and CLNK1) are characterised by low mean flows and highly intermittent peaks. Often, peaks appear at the wrong time – as exemplified at CLNK1 during the autumn months of 2019 – or re-

Table 5. List of the 23 input variables used during the training, testing, and operational use of the LSTM streamflow model.

Surface meteorology (ERA5/IFS)	Surface hydrology (ERA5/IFS)	Subsurface hydrology (ERA5/IFS)	Other
10 m u wind	Precipitation rate	Subsurface runoff	Raw streamflow (GloFAS-ERA5/GloFAS)
10 m v wind	Total runoff	Soil moisture layer 1	Bias-corrected streamflow (GloFAS-ERA5/GloFAS)
2 m temperature	Surface runoff	Soil moisture layer 2	Mean historical streamflow for day of year (obs)
2 m dew point	Skin reservoir content	Soil moisture layer 3	
Skin temperature	Snowfall	Soil moisture layer 4	
	Snow depth	Soil temperature layer 1	
	Snow cover		
	Surface latent heat flux		
	Evaporation		

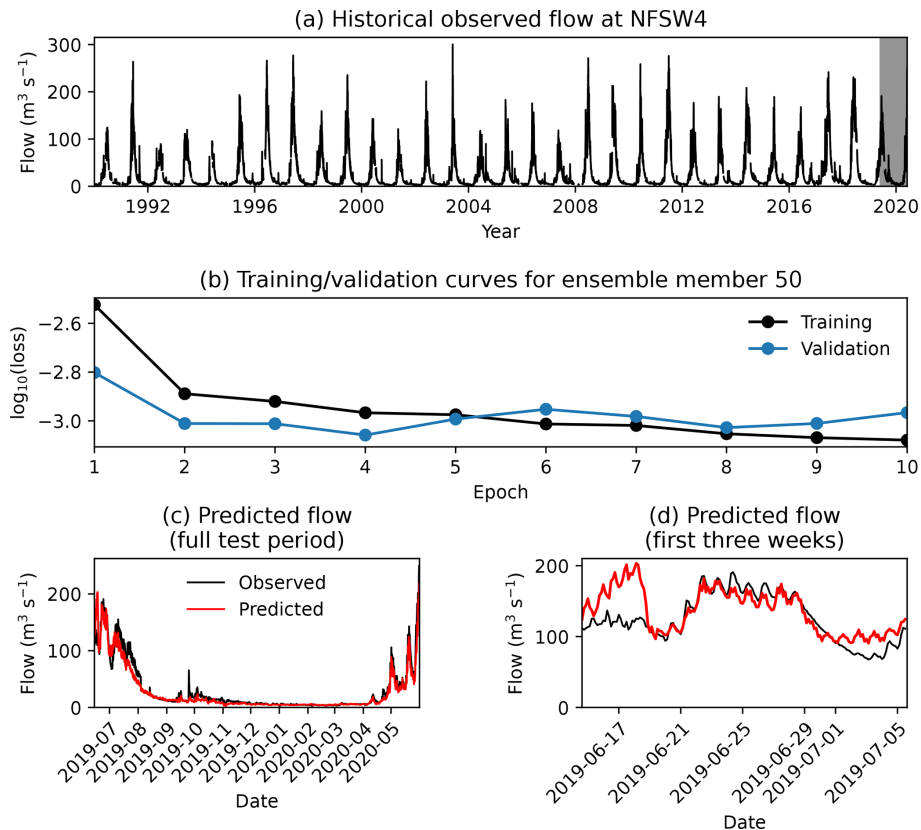


Figure 3. Example training of a single LSTM ensemble member for the NFSW4 gauge, showing (a) the full dataset of observed streamflow, with the testing period shaded in grey, and (b) comparison of the training and validation losses over the 10 training epochs. For a fair comparison, the validation loss has been multiplied by the ratio of the variances of the testing and training datasets. Also shown are comparisons of the predicted streamflow to observations for the full (c) and start of (d) the testing period.

spond too slowly or too smoothly to short precipitation stimuli.

At stations where the raw GloFAS-ERA5 product is skilful but not highly skilful (TCCC1, ESSC2, NFDC1, and LABW4) are typically marked by it capturing the annual cycle well, but generally missing some or most intraseasonal variability. This is evident in ESSC2 and LABW4, where the summer maximum and winter minimum were well captured,

but autumn and spring storms were not. Those stations where the product is highly skilful (TRAC2 and NFSW4) also capture intraseasonal variability well – see for example April and May 2020 at NFSW4, where the discharge associated with two spring storms is well simulated by the model.

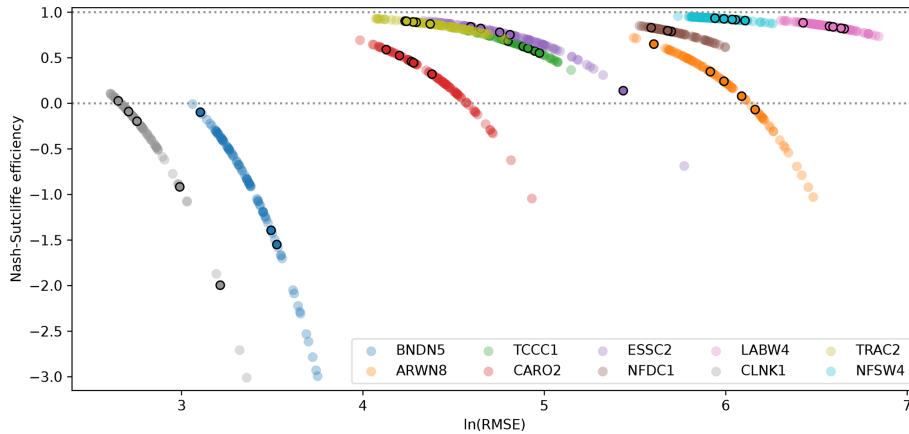


Figure 4. The Nash–Sutcliffe efficiency and logarithm of the root mean square error in streamflow ($\text{m}^3 \text{s}^{-1}$) for each of the 100 ensemble members of each gauge-specific LSTM, computed over the June 2019–June 2020 testing period. Each member was trained for 10 epochs, except for five that were trained for 100 epochs. These five are marked with an additional black ring.

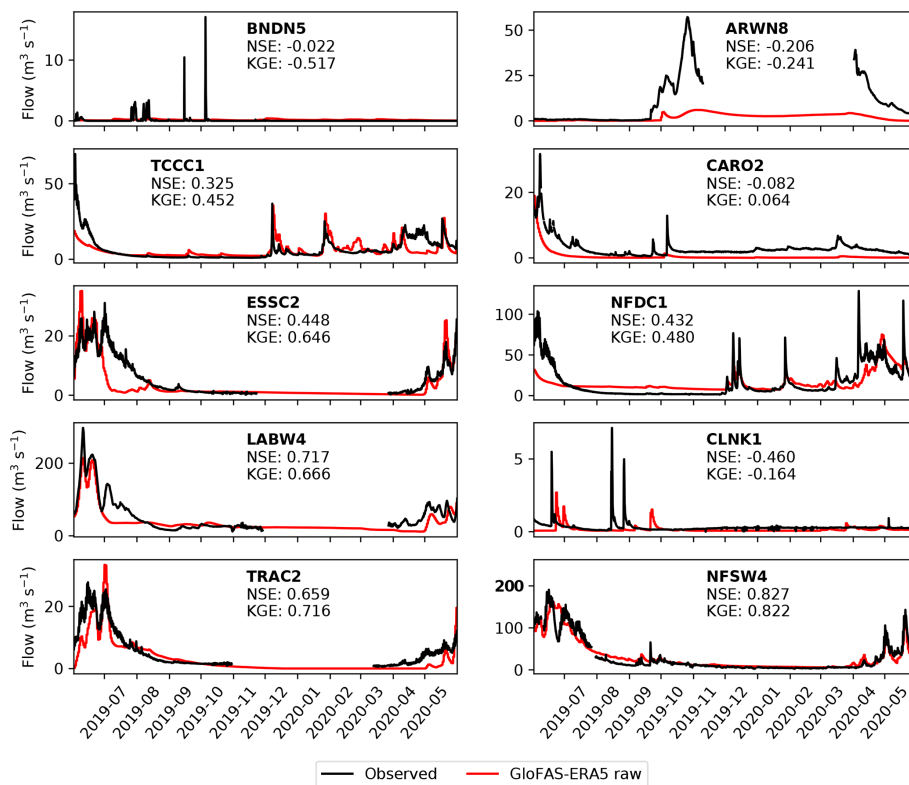


Figure 5. Comparison of observed streamflow (black) with raw GloFAS-ERA5 output (red) for each of the 10 gauges over the testing period (June 2019 to June 2020). Gaps in the observational record over the winter are due to river freezing. Nash–Sutcliffe and Kling–Gupta efficiencies over the year-long period are given for each gauge.

5.1.2 Bias-corrected GloFAS-ERA5

Bias-corrected GloFAS-ERA5 is compared with observational streamflow for each of the 10 gauges over the testing period in Fig. 6. The results are a substantial improvement over the raw GloFAS-ERA5 output: NSE is improved at 7 of

the 10 stations (except BNDN5, ARWN8, TCCC1) and KGE is also improved at seven stations (except BNDN5, TCCC1, NFDC1). Following bias correction, GloFAS-ERA5 is now skilful at seven stations and highly skilful at four.

Failures at BNDN5 and ARWN8 are mostly due to the bias correction algorithm being unable to calibrate low and spo-

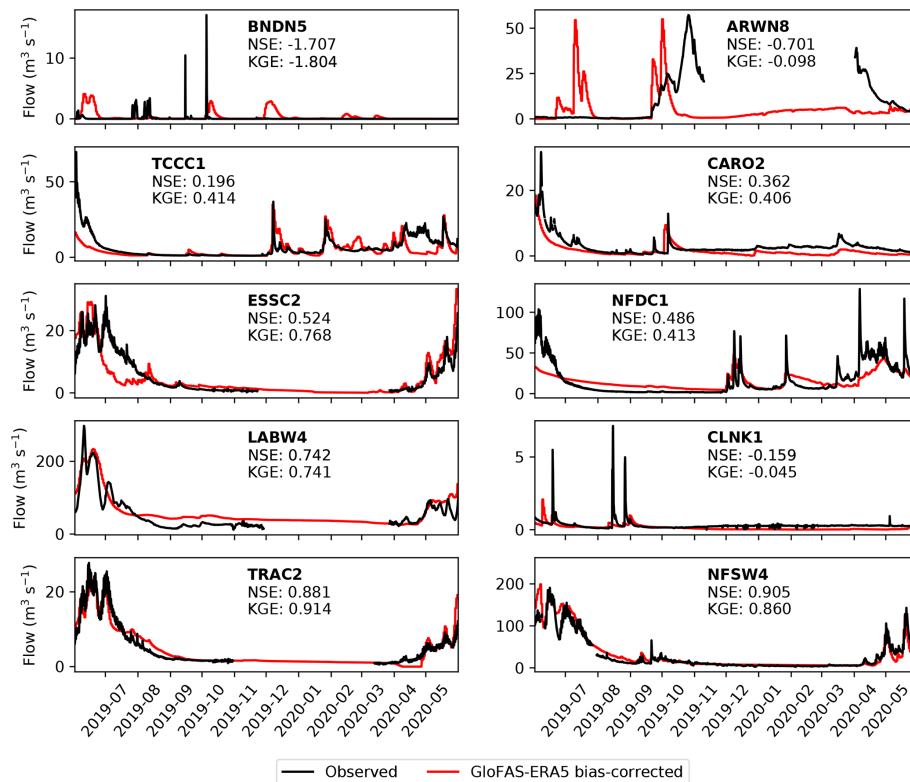


Figure 6. Comparison of observed streamflow (black) with bias-corrected GloFAS-ERA5 output (red) for each of the 10 gauges over the testing period (June 2019 to June 2020). Gaps in the observational record over the winter are due to river freezing. Nash–Sutcliffe and Kling–Gupta efficiencies over the year-long period are given for each gauge.

radic flow, although at ARWN8, the quantile mapping brings the simulated mean and variance closer to observations as desired, resulting in an improved KGE. Although the simulated flow at CLNK1 is still not skilful, it has been improved considerably by the bias correction, where the spatial optimisation routine has somewhat improved the timing of the peaks. Both CARO2 and TRAC2 also saw large increases in NSE and KGE due to improved representation of intraseasonal variability.

5.1.3 LSTM

Figure 7 shows the performance of the LSTM model, ingesting ERA5 and GloFAS-ERA5, at each gauge over the testing period. It represents a step change in model efficiency over the bias-corrected GloFAS-ERA5 output, being skilful at nine gauges and highly skilful at six. The KGE is greater than 0.9 at three stations and the NSE is greater than 0.9 at four.

Despite this, the BNDN5 and CLNK1 gauges remain relative poorly modelled (although the latter does qualify as skilful). In the observations, BNDN5 is characterised by long periods of no flow, with occasional short-lived (typically less than 2 d) peaks. The LSTM does manage to capture these peaks, but the timing is incorrect – usually several days late

– and the magnitude is often far too small. The first of these issues, and perhaps the second, is likely due to the LSTM ingesting catchment-mean variables. The catchment basin for BNDN5 is large and arid, and therefore rain falling over it is probably not appropriately captured using this simplification. Future development of an LSTM model for streamflow at BNDN5 or similarly large and arid basins should thus consider an expanded input that ingests variables over all (or representative) grid points in the basin. At most of the other gauges, intraseasonal variability is captured very well. This is true both for individual storms – for example, high-discharge events at TCCC1 in early December 2019 and NFDC1 in late January 2020 were almost perfectly simulated – and broader flow patterns such as ESSC2 in summer 2019 and NFSW4 in spring 2020.

5.2 Verification over operational period: September 2020 to October 2021

Following testing, we ran all three models (raw GloFAS, bias-corrected GloFAS, and the LSTM) operationally for 13 months between 1 September 2020 and 1 October 2021, producing 10 d forecasts at daily frequency. As discussed in Sect. 4, the major difference between the testing period and the operational period is the switch from ERA5 to IFS for the

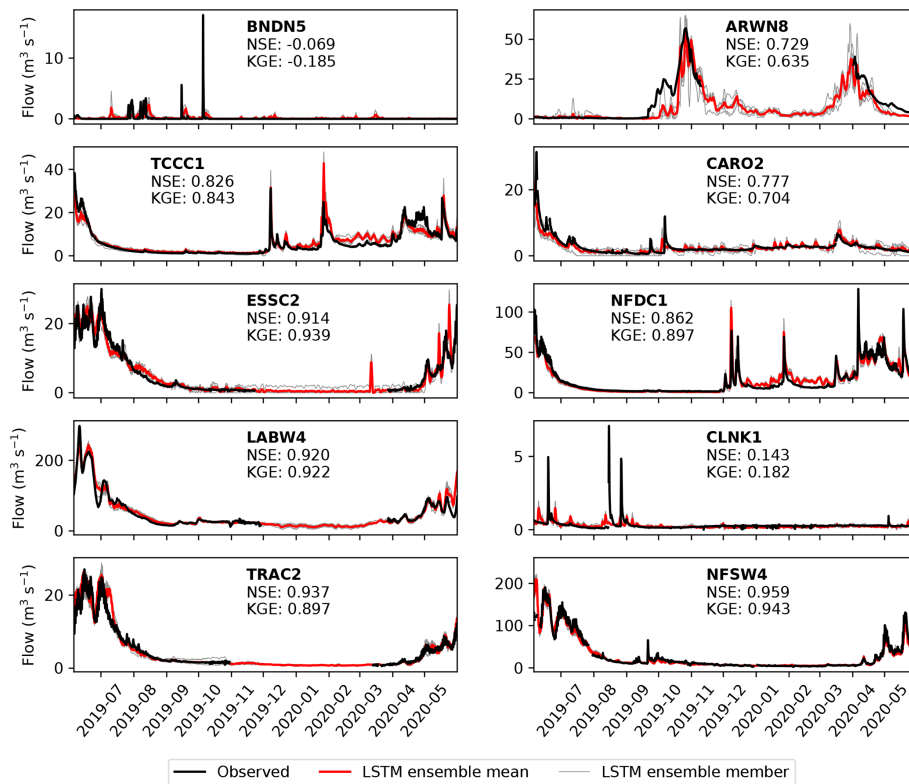


Figure 7. Comparison of observed streamflow (black) with the LSTM ensemble output (members: grey, mean: red) for each of the 10 gauges over the testing period (June 2019 to June 2020). Gaps in the observational record over the winter are due to river freezing. Nash–Sutcliffe and Kling–Gupta efficiencies over the year-long period are given for each gauge.

variables ingested by the GloFAS prediction system and by the LSTM. The effects of this switch are somewhat mitigated by using the same underlying model (ERA5 uses the IFS), but there will be biases in IFS forecasts that are not present in ERA5, since the latter is nudged with simultaneous observations that are not available to the forecasts at non-zero lead times.

Forecasts at each station are evaluated at 2, 5, and 8 d lead times against the official observations. Results are given over the entire operational period for the raw GloFAS forecasts in Fig. 8, the bias-corrected GloFAS forecasts in Fig. 9, and for the LSTM forecasts in Fig. 10. As expected, even at short lead times, the forecasts generally perform more poorly than their reanalysis-based counterparts. There are a handful of notable exceptions to this, particularly for the raw GloFAS forecasts at BNDN5, TCCC1, and CLNK1. Although the GloFAS forecasts derive from a marginally more recent version of the IFS than does ERA5, the gains in this context are likely to be insignificant. At BNDN5 and CLNK1, the difference appears to be due to the hydrographs of the testing and operational periods having different characteristics. During the testing period, there was no flow at BNDN5 except for several very short (\sim daily) pulses of non-zero discharge in autumn 2019; during the operational period, however, au-

tumn 2021 was marked by a period of low but continuous flow. The lagged autocorrelation of the latter situation almost invariably makes it easier to model. At CLNK1, constant very low flow is punctuated by occasional, short-lived peaks. There was only one significant peak in the operational period compared with four in the testing period, making it easier to model correctly. This is arguable also the case at TCCC1, where increased subseasonal variability in the operational period – notably two big storms in December 2019 and January 2021 – made it more challenging to simulate than the testing period.

Evaluating overall performance by computing the KGE of the 5 d forecasts, we find that the bias-corrected GloFAS forecast beats the raw GloFAS forecast at six stations, the LSTM forecast beats the bias-corrected GloFAS forecast at all 10 stations and the raw GloFAS forecast at nine. The raw GloFAS 5 d forecasts were skilful at seven stations and highly skilful at one of these; the bias-corrected GloFAS 5 d forecasts were also skilful at seven stations and highly skilful at one of these – though with significant improvement over the raw GloFAS forecasts at six of the seven showing skill. The LSTM 5 d forecasts were skilful at nine stations and highly skilful at five of these.

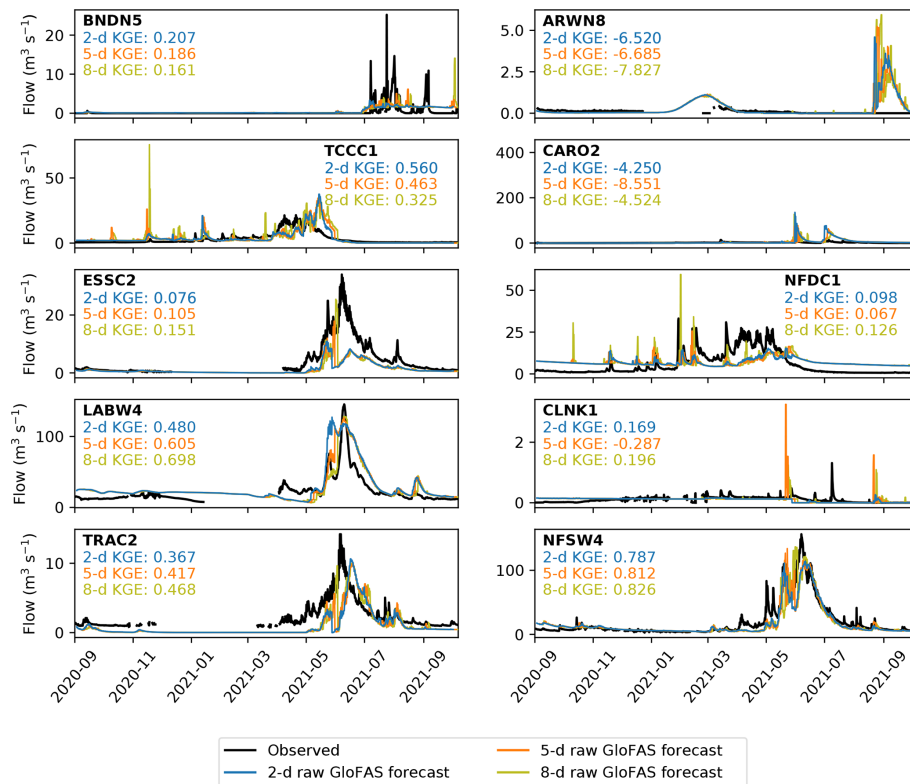


Figure 8. Verification of the 2 d (blue), 5 d (orange) and 8 d (yellow) raw GloFAS forecasts against observations (black) over the operational period (September 2020 to October 2021). Observations are plotted at 6-hourly resolution to match the forecasts and are not plotted when the river is frozen. Kling–Gupta efficiencies for each lead time at each station are also given.

To complete this evaluation, we now extend our analysis to all lead times and include a simple persistence model as a benchmark (Sect. 4). For sufficiently long verification periods, the mean and variance of persistence forecasts by definition asymptotically approaches those of the observations. This has two key implications: firstly, since KGE is sensitive to the errors in forecast mean and variance, the persistence model receives a large advantage in this score compared with the other models; secondly, following on from the first point, KGE is no longer a fair descriptor of model performance, so we must also consider NSE.

Figure 11 shows how the KGE and NSE vary for each model at each station as a function of lead time. Here, we are more interested in the higher values of these metrics (i.e. if a model is skilful, how skilful is it?) than the orders of magnitude of negative KGE and NSE values produced by useless forecasts, and so we truncate the plots at $\text{NSE} = -1$ and $\text{KGE} = 0$. For each model at each station, scores are plotted from lead times of 1 to 10 d inclusive, denoted by markers of diminishing radius, and connected in order by thin lines of the same colour, creating “phase space caterpillars”. Presenting the metrics in this way allows a quick intercomparison between models; for example, we can see clearly where bias correction has worked well (ESSC2, NFDC1, TRAC2) by

identifying where the bias-corrected points have moved significantly upward and to the right compared with their raw counterparts. With the exception of BNDN5, CLNK1 and CARO2, we see that the LSTM forecasts tend to have comparable KGE to the persistence forecasts but higher NSEs. Both the persistence and LSTM forecasts tend to outperform the raw and bias-corrected GloFAS forecasts. We also note that stations with a high lagged autocorrelation (i.e. those stations where the persistence model does well) tend also to have discharge that is well simulated by all three of the operational models. Exemplified by LABW4 and NFSW4, these are typically high-discharge sites with large catchment areas and slow response times. Indeed, those stations where the GloFAS and LSTM models struggle the most are characterised by flash responses, with their dominant mode of variability on the diurnal rather than annual or semiannual timescale.

Next, to understand how the models perform as a function of forecast lead time, we decompose the KGE values into their three components: correlation (Fig. 12, bias ratio (Fig. 13), and variability ratio (Fig. 14). As before, we truncate the graphs to remove poorly performing metric values where necessary. In terms of the correlation coefficient, the LSTM performs best at 5 of the 10 stations (ARWN8,

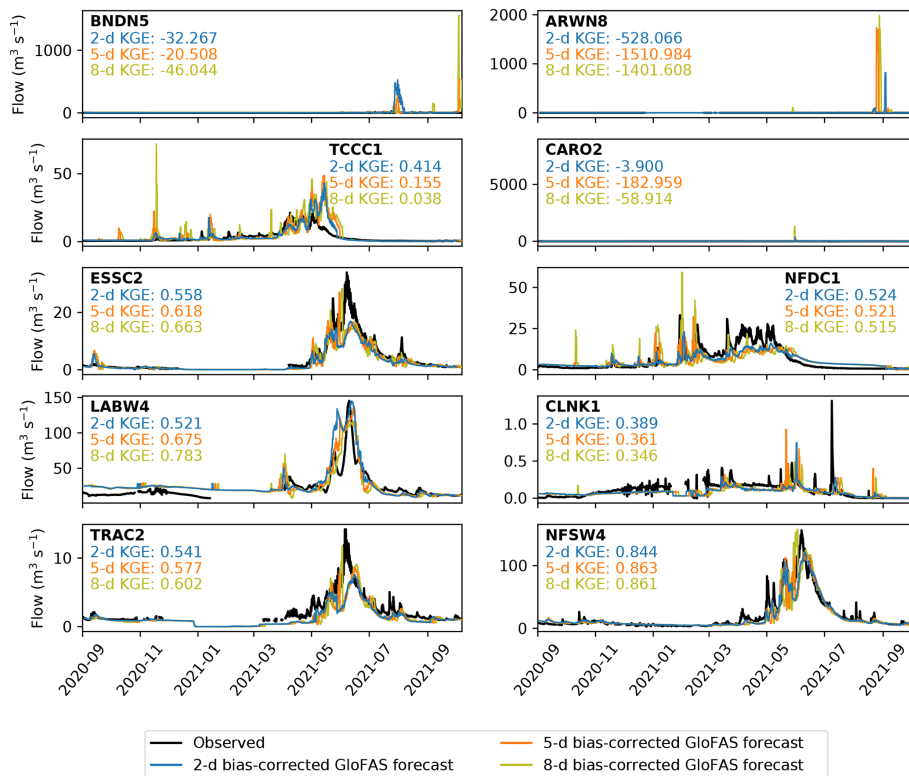


Figure 9. Verification of the 2 d (blue), 5 d (orange) and 8 d (yellow) bias-corrected GloFAS forecasts against observations (black) over the operational period (September 2020 to October 2021). Observations are plotted at 6-hourly resolution to match the forecasts and are not plotted when the river is frozen. Kling–Gupta efficiencies for each lead time at each station are also given.

TCCC1, NFDC1, TRAC2, NFSW4) and most notably is the only forecast to have a positive correlation with the observation at ARWN8. This is mainly due to a fictional peak in the raw GloFAS which is exacerbated by the bias correction but which is filtered out by the LSTM. In addition to these five stations, the LSTM also has the highest correlation at short lead times at LABW4, but this decreases at longer lead times, dropping below the correlation coefficient of the other two forecasts after 4 d. The timing of the largest peak at LABW4 during the operational period is better predicted by the raw and bias-corrected GloFAS forecasts at longer lead times, whereas for the LSTM it is shorter lead times that accurately predict this peak. The raw forecast has comparable correlation coefficients to the bias-corrected and LSTM forecasts at the three largest stations (BNDN5, CARO2, LABW4) but is notably lower for smaller catchments supporting the need for caution when using the raw GloFAS forecast for catchments below the recommended 2000 km² threshold. Since the bias-correction method is based on quantiles it can impact the correlation of the forecasts. The bias-corrected GloFAS has an improved correlation compared with the raw GloFAS forecast at 7 of the 10 stations (TCCC1, ESSC2, NFDC1, CLNK1, TRAC2, NFSW4, ARWN8 – not shown).

Surprisingly, the bias ratio of the bias-corrected GloFAS forecasts is worse than the raw GloFAS forecasts at 4 of

the 10 stations (BNDN5, ARWN8, TCCC1, CLNK1). These four stations tend to have low streamflow variability except for some short-duration large peaks. As these peaks are largely seasonal this vulnerability in the bias correction technique is likely due to the change in discharge distribution throughout the year, a problem that could be rectified by applying a season-based quantile mapping. The large bias ratios at BNDN5 and ARWN8, and CLNK1 and CARO2 at longer lead times, are often due to unprecedentedly large values forecast by the raw GloFAS. The quantile mapping extrapolates these quantities to unphysically large values (see e.g. 5000 m³ s⁻¹ in September 2021 at CARO2 in Fig. 9). The raw GloFAS forecasts underpredict the streamflow at the small catchments at high elevations (ESSC2, TRAC2). The bias correction does partially correct for this bias, but the LSTM forecast still has the lowest bias at these stations. In fact, the LSTM is the least biased forecast for 8 of the 10 stations, the exceptions being BNDN5 and CLNK1, where the raw forecast is better. For the largest catchment, BNDN5, the raw GloFAS forecast has a relatively small bias ratio compared with the other two forecasts, mainly because it consistently predicted the zero flow during the first half of the verification period.

The raw GloFAS forecast has the best variability ratio of all three forecasts at the two larger high-elevation catch-

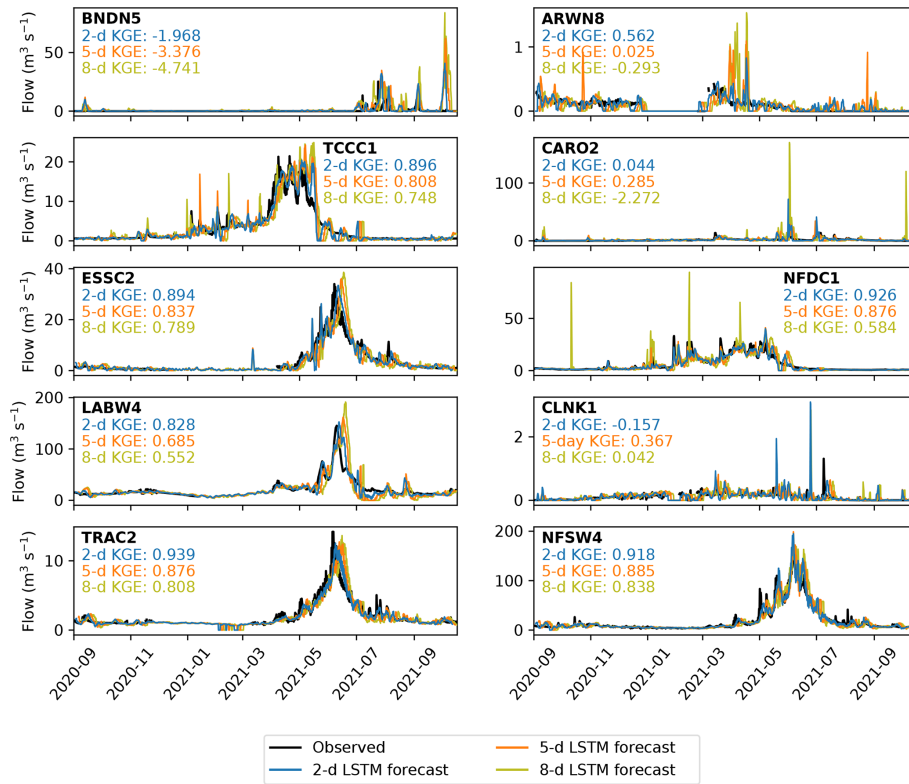


Figure 10. Verification of the 2 d (blue), 5 d (orange) and 8 d (yellow) LSTM forecasts against observations (black) over the operational period (September 2020 to October 2021). Observations are plotted at 6-hourly resolution to match the forecasts and are not plotted when the river is frozen. Kling–Gupta efficiencies for each lead time at each station are also given.

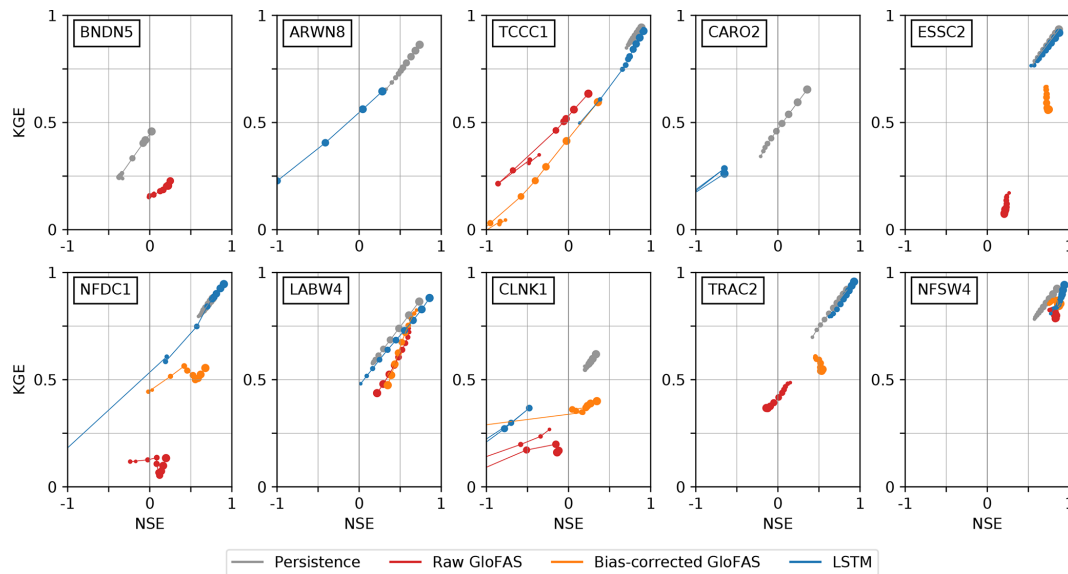


Figure 11. Overall performance of the three models during the operational period (September 2019 to October 2020) compared with a persistence benchmark (grey). For each model, at each station, and for each lead time (from 1 to 10 d), the Nash–Sutcliffe and Kling–Gupta efficiencies – compared with observations – are plotted. Lead times are connected sequentially by markers of diminishing size, with the 10 d lead time having the smallest marker. Values of KGE below 0 or NSE below -1 are not plotted.

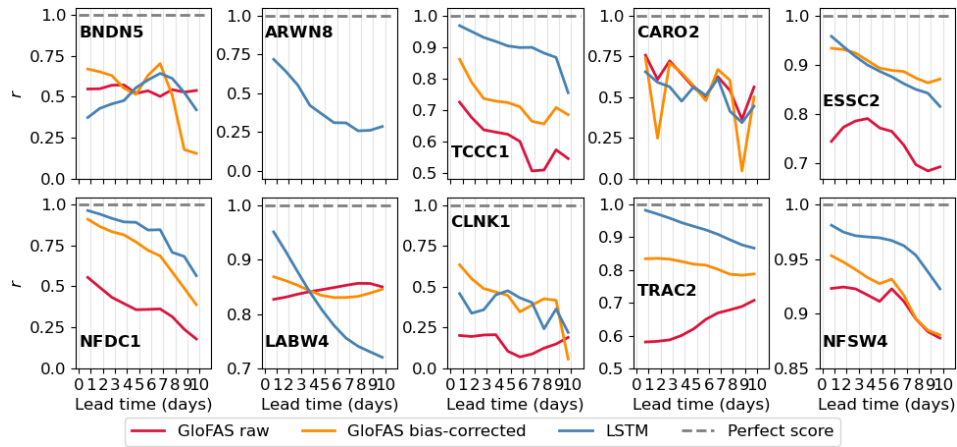


Figure 12. Correlation coefficient, r , calculated over the verification period for all three forecast models at each station for each lead time (from 1 to 10 d). Negative correlations for ARWN8 have not been plotted.

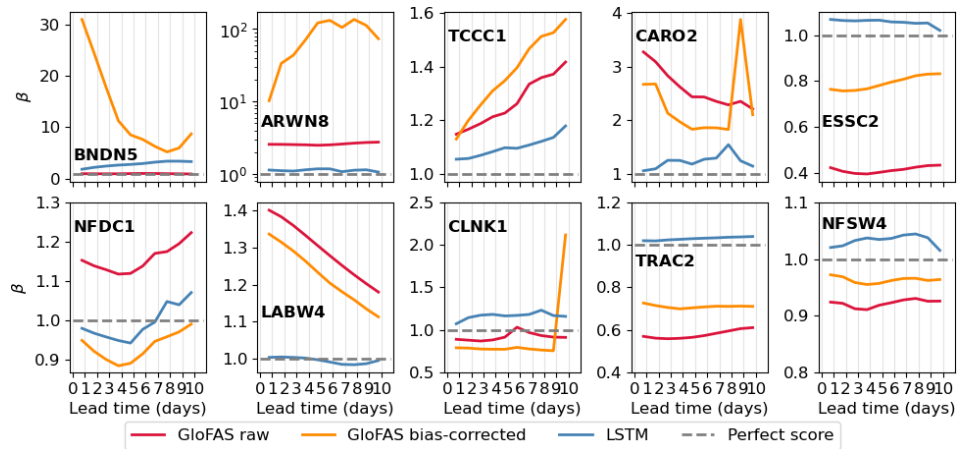


Figure 13. Bias ratio, β , calculated over the verification period for all three forecast models at each station for each lead time (from 1 to 10 d). Note the logarithmic scale of the y axis for ARWN8.

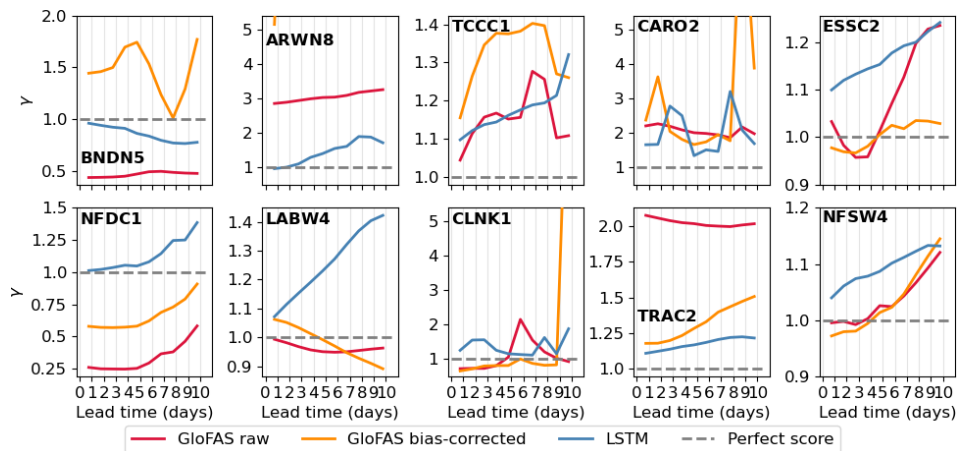


Figure 14. Variability ratio, γ , calculated over the verification period for all three forecast models at each station for each lead time (from 1 to 10 d). The y axis has been truncated to γ values = 5.2 for stations ARWN8, CARO2, and CLNK1.

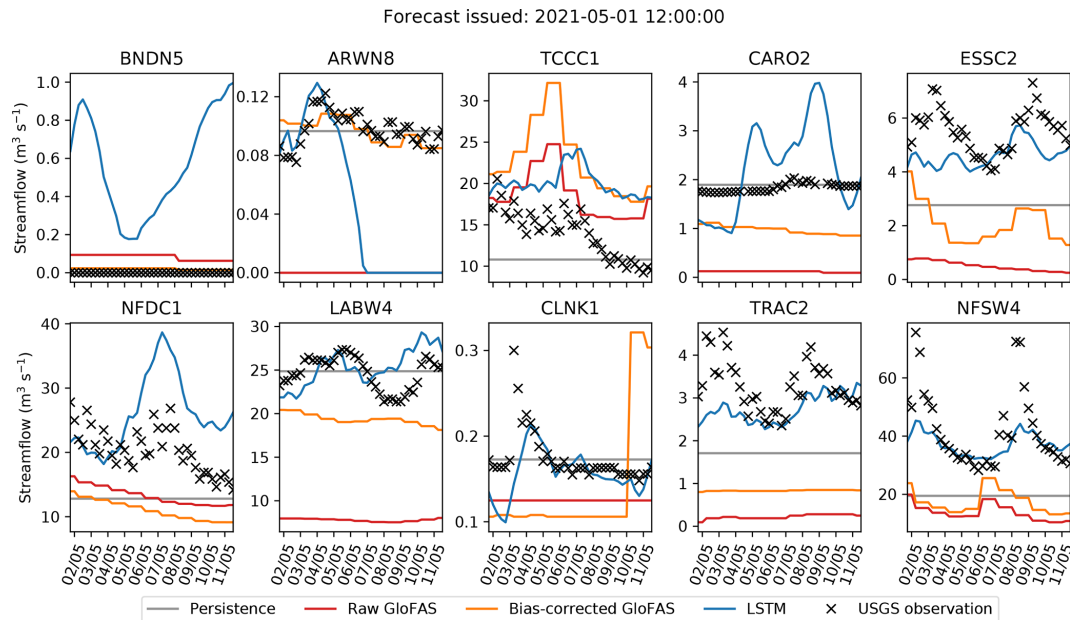


Figure 15. Example forecasts, issued on 1 May 2021, for lead times of up to 10 d. The four models (persistence: grey, raw GloFAS: red, bias-corrected GloFAS: orange, LSTM: blue) are verified against the official observations plotted in black crosses.

ments (LABW4, NFSW4), although at both stations the bias-corrected forecast has similar variability ratios at some lead times. However, the bias correction only improved the flow variability of raw GloFAS forecasts at half of the stations (BNDN5, ESSC2, NFDC1, CLNK1, TRAC2). However, these stations vary significantly in catchment characteristics (catchment size, elevation, peak duration, meteorological regimes), as do the stations where the bias correction is beneficial, so there is no obviously favourable catchment characteristic. The unphysical streamflow predictions seen at BNDN5, ARWN8, CLNK1 and CARO2 also impact their variability ratio metric. The LSTM has the best variability ratio at 3 of the 10 stations (BNDN5, ARWN8, TRAC2) and comparable values at a further four (CARO2, ESSC2, LABW4, CLNK1). All forecasts have a higher variability ratio at longer lead times at NFDC1, with the rate of increase similar for all three forecasts. This suggests that the change with lead time is due to factors impacting both, such as a bias in the IFS forecast which is used to drive the LSTM and the LISFLOOD hydrological model used to create the GloFAS forecasts.

Finally, as this is a study on forecasting, we would be remiss not to analyse a single forecast. Figure 15 shows the forecasts issued for the 10 stations on 1 May 2021, along with the persistence forecast, verified against observations. We see more easily here how the bias correction often – but not always – nudges the raw GloFAS forecast in the right direction, with particularly successful results at ARWN8 for this forecast. Of particular interest during this period was a pair of rain-on-snow events that impacted stations in the Rockies (NFSW4, LABW4, ESSC2, and TRAC2). These resulted

in large spikes in the streamflow, visible in the observations, centred on 3 and 9 May. Neither the raw nor bias-corrected GloFAS forecasts captured this, nor did a number of other operational forecasts (Kenneth Nowack; personal communication). While the LSTM mostly underestimated the magnitude of these events, it did predict them. This highlights the ability of LSTMs in general to learn complex non-linear relationships that may be altogether absent from physics-based models.

6 Discussion

6.1 Potential improvements

As with any newly developed forecast models or techniques, we encountered scope for improvement during the operational phase and post-operational analysis. There are two potential improvements to the bias correction, in its current form. The first is to further granularise the process, computing a new quantile mapping and bias-correction matrix for (e.g.) each season. This would have the advantage of further reducing the relative bias caused by seasonally varying environmental factors (e.g. snow on ground in winter or intense storms in the summer saturating the soil). Such work must be careful to avoid overfitting the matrices given the increased degrees of freedom.

The bias correction would also benefit from a dependence on forecast lead time. Since biases invariably grow as a function of lead time, the correction required for a 10 d forecast is likely to be larger than the correction required for a 2 d

forecast. In using GloFAS-ERA5 to compute our bias correction terms in Sect. 4.3, we effectively limited ourselves to a 0 d lead time correction. The hindcasts that would be required for this now exist from 1997 onwards, and work at ECMWF has used them for bias correction of flood threshold forecasts through cumulative distribution function (CDF) mapping (Zsoter et al., 2020).

Similarly, the LSTM was trained on ERA5 data but then ingested IFS output when run operationally. Although the two products will share some biases, they will inevitably be larger in IFS (the forecast) than ERA5 (the reanalysis), resulting in errors that propagate non-linearly through the LSTM. Originally, we chose to train the model on ERA5 so that our methods were reproducible, but there is no reason other forecasters should be bound by this desire. The optimal strategy is to train the LSTM on IFS hindcasts – though this would require careful adjustment of the architecture to account for different lead times. Similarly, such an approach must be careful of changing hindcast model versions.

In our model, the LSTM is trained on, and subsequently ingests, catchment-mean variables (with the exception of streamflow, which is taken at the point of interest). However, as we know, rain falling far away from the station takes longer to reach it than rain falling nearby – a relationship lost when this approximation is made. By replacing the catchment-mean pre-processing step with a convolutional layer in the LSTM, the LSTM would be able to learn such spatiotemporal relationships and likely produce improved forecasts as a result. As we saw in the introduction, work by Le et al. (2019) showed that even a relatively simple LSTM that ingested data from different points upstream could produce excellent results. Despite the potential advantages, there are some caveats to adding a convolutional layer. Firstly, training convolutional LSTMs is computationally very expensive. Secondly, different basins have different areas and therefore have to ingest a different number of vectors. This either requires a new architecture for each basin (essentially unfeasible) or intelligent pre-processing, e.g. grouping the data by distance to the station. Thirdly, related to the second point, it does not allow transferability between products of different spatial resolutions without additional pre-processing. One option may be dimensionality reduction of the 2D catchment into a generalised 1D representation. Another, recently explored by Feng et al. (2021), is to use graph convolutional networks.

Could the LSTM be replaced with a simpler statistical or machine learning model which is easier to train, such as a multiple linear regression, random forest, or XGBoost? Although this may be tempting, recent research suggests that LSTMs comfortably outperform both random forest models (Adnan et al., 2021) and XGBoost (Gauch et al., 2021b) on streamflow prediction problems, particularly with increasing sample size. LSTMs are now well established as a powerful tool for modelling complex and non-linear hydrological systems (Gauch et al., 2021a). However, their limitations –

such as lack of parallelisation and long-range dependencies – mean that they are being increasingly overlooked in sequential data problems in favour of gated recurrent units (GRUs) and attention-based models (Vaswani et al., 2017). Little research has yet been done into whether such models are more useful than LSTMs in hydrological contexts. It is likely, however, that switching to the method proposed in Kratzert et al. (2019b) – that is, using a single LSTM trained across multiple basins – would improve the forecasts. This approach would also allow the LSTM to be applied in ungauged catchments.

Generalisation when provided with out-of-distribution data and lack of interpretability are often cited as limitations of machine learning, particularly in the environmental sciences. However, as shown in Kratzert et al. (2019a), LSTMs trained across multiple basins actually perform well on previously unseen (even ungauged) basins that might typically be considered out of distribution. Similarly, such LSTMs can capture extreme values of streamflow driven by out-of-distribution extreme precipitation events (Frame et al., 2022). Taken together, these results suggest that such LSTMs are capable of capturing the underlying hydrological relationships that connect precipitation, runoff, and streamflow. Since climate change does not affect the underlying physical relationships, well-constructed LSTMs – and other ML models in general – should be largely immune. However, there are other types of changes, e.g. increasing urbanisation, that will affect the underlying relationships and would then degrade the skill of the LSTM – although this would happen in any other kind of hydrological model if not appropriately updated. Although recent work has shown potential for interpretability in streamflow LSTMs (e.g. using attention theory; Li et al., 2021), this is still generally a weakness compared with physics-based models. However, in not having to rely on prescribed relationships, machine learning products can potentially learn new ones.

The LSTM as set-up in this paper still requires a hydrological model, LISFLOOD, to be calibrated in an offline procedure and then run daily in the operational period to create the forecasts. Therefore, whilst the LSTM ingests both meteorological and hydrological variables and therefore likely represents some of the hydrological processes itself, it could be seen as a post-processing method for the GloFAS forecasts. It would be interesting to see how the difference in perspective impacts users' trust in the forecasts. Additionally, the need to run the hydrological model limits some of the benefits available via the LSTM such as computational efficiency. Future work should look at the contribution made by the LISFLOOD streamflow input data to the final LSTM forecasts and whether the impact is significant enough to warrant the additional resources. Alternatively, future research could investigate incorporating machine learning techniques directly into LISFLOOD either to speed up calculations (Höge et al., 2022; Rackauckas et al., 2020; Raissi et al., 2020) or to repli-

cate processes that are not currently modelled in LISFLOOD within GloFAS such as the impact of reservoir management.

Finally, due to data pipeline constraints, we used only the control member of the IFS and GloFAS throughout our operational deployment. Two open research questions remain: what is the best way to combine ensemble members as inputs to an LSTM, and how can ensemble members be leveraged to provide accurate uncertainty estimates in the forecasts?

6.2 Potential applications

We have demonstrated, as have other authors, that LSTMs show a great deal of promise for river streamflow modelling and forecasting. Given this, there are other potential applications that are not immediately obvious from this work.

Perhaps the most exciting is the idea propounded by Kratzert et al. (2018), that LSTMs such as the one in this study are not black boxes, rather they are often “grey” boxes, often containing many neurons whose output can be physically interpreted. In some cases – Kratzert et al. (2018) highlighted a neuron responsible for calculating snowmelt – representing relationships already captured by physics-based models; in others – e.g. if the rain-on-snow phenomenon described earlier is produced by a single neuron – representing relationships not necessarily captured by existing physics-based models. There is, then, the potential for new hydrological relationships to be discovered through careful investigation of a well-trained LSTM.

Another potential application is to use an LSTM model – in a basin where it has a high KGE and NSE – to infill missing data in the observational record or to extend it further back in time where reanalysis coverage permits. Continuous long-term streamflow records are useful for both climate and hydrology research, as well as the insurance industry. Similarly, because the LSTM is extremely cheap to run once trained, it could readily be applied to climate model output (either following bias correction of that data, or by using transfer learning to adjust the internal weights of the LSTM) to produce projections of streamflow over selected basins in future climate scenarios.

7 Conclusions

In this study, we explored the efficacy of three models at simulating, and then forecasting up to a 10 d lead time, streamflow at 10 different sites across the western United States. The forecasts were then verified against official observations and compared with a benchmark persistence model. The three models were the following.

1. The control member of the Global Flood Awareness System (GloFAS) ensemble, a physics-based model developed by ECMWF and the Joint Research Centre of the European Commission that provides global forecasts at a resolution of $0.1^\circ \times 0.1^\circ$.

2. A bias-corrected version of the raw GloFAS forecast above. The bias correction technique was newly developed for this study: firstly, each pixel is corrected using a simple quantile-mapping technique, where the mapping is computed using historical observations and the reanalysis version of GloFAS, GloFAS-ERA5. Secondly, the final streamflow is estimated using an optimised linear combination of streamflow from surrounding pixels. The matrix of coefficients for this linear combination is computed by maximising the sum of the Kling–Gupta and Nash–Sutcliffe efficiencies of the output.

3. A type of recurrent neural network, known as a long short-term memory network (LSTM), the development of which was a key focus of this study. The LSTM was trained to ingest catchment-mean meteorological and hydrological variables and output streamflow at 6-hourly intervals. Trained using historical ERA5 reanalyses and observations, when run operationally, the LSTM ingested forecasts from the ECMWF IFS.

Each of the three models were run for a 12-month testing period (June 2019 to June 2020), for which they used ERA5 as input, to test how well they could simulate streamflow at the 10 stations. Defining skilful as having a KGE greater than -0.414 and highly skilful as having a KGE greater than 0.707 , the LSTM performed best (skilful at nine stations, highly skilful at six of these, and with a KGE exceeding 0.9 at three of those), followed by the bias-corrected GloFAS (skilful at seven, highly skilful at four), followed by the raw GloFAS (skilful at six, highly skilful at two). The bias correction improved the KGE of simulated streamflow at 7 of the 10 stations, implying that it is better at improving the skill of already skilful simulations than adding skill to unskilful ones.

The three models were then run operationally for a 13-month period (September 2020 to October 2021), using forecast output from the control member of the IFS as input. Forecast efficiencies were calculated for 2, 5, and 8 d lead times. Again, the LSTM performed best, with 5 d forecasts being skilful at nine stations, of which five were highly skilful, followed by the bias-corrected GloFAS, with 5 d forecasts being skilful at seven stations, of which one was highly skilful, and then raw GloFAS, which also had skilful 5 d forecasts at seven stations, one of which was highly skilful, but had lower KGE at six of the seven stations showing skill. An important caveat is that 7 of the 10 stations (all except BNDN5, CARO2, and LABW4) had catchment areas smaller than 2000 km^2 , the recommended lower bound for using GloFAS forecasts. However, of these seven, the raw and bias-corrected 5 d GloFAS forecasts were skilful at six (highly skilful at one). The 5 d LSTM forecasts performed better than the raw and bias-corrected GloFAS forecasts at two of the three largest catchments not BNDN5), where the comparison is most fair. The results for all sta-

Table 6. Summary of results by station, showing the mean discharge and fraction of missing observations during the training period, the KGE for each of the three models over the testing period, and the KGE for 5 d forecasts from each of the three models over the operational period. Values of KGE greater than 0.707 (i.e. “highly skilful”) are marked in bold. Stations are ordered according to mean model skill during the testing period, with better-performing gauges towards the right.

Station	BNDN5	CLNK1	ARWN8	CARO2	TCCC1	NFDC1	LABW4	ESSC2	TRAC2	NFSW4
Mean discharge ($\text{m}^3 \text{s}^{-1}$)	0.368	0.142	8.24	3.28	20.5	49.0	26.0	4.47	1.19	8.55
Missing obs (%)	24	14	51	9.0	1.6	4.1	37	22	33	19
Raw KGE (testing)	-0.517	-0.164	-0.241	0.064	0.452	0.480	0.666	0.646	0.716	0.822
BC KGE (testing)	< -1	-0.045	-0.098	0.406	0.414	0.413	0.741	0.768	0.914	0.860
LSTM KGE (testing)	-0.185	0.182	0.635	0.704	0.843	0.897	0.922	0.939	0.897	0.943
Raw KGE (5 d fc)	0.186	-0.287	< -1	< -1	0.463	0.067	0.605	0.105	0.417	0.812
BC KGE (5 d fc)	< -1	0.361	< -1	< -1	0.155	0.521	0.675	0.618	0.577	0.863
LSTM KGE (5 d fc)	< -1	0.367	0.025	0.285	0.808	0.876	0.685	0.837	0.876	0.838

tions and models are summarised in Table 6. There is no significant relationship between model performance and either catchment size or altitude, despite the fact that seven gauges have catchments smaller than the recommended minimum for using GloFAS. Instead, model performance generally improves with larger mean discharge, a more pronounced seasonal cycle, and more complete historical observations.

Finally, the three models were compared at all lead times and at all stations against a benchmark persistence model. The LSTM had a higher mean NSE than the persistence model at 6 of the 10 stations – NSE is the preferred evaluation metric here given the dependence of KGE on errors in flow mean and variance, which are zero by definition for a long period of persistence forecasts. Overall, stations with a clearly defined annual cycle and low variance about that cycle were the easiest to predict for all models, whereas stations whose variance was dominated by single storms provided the greatest challenge. The results show a promising future for LSTMs in river streamflow forecasting.

Code availability. All code used to generate, train, and test the models, as well as produce the figures and analysis for this paper, are available in a dedicated Zenodo repository: <https://doi.org/10.5281/zenodo.7260860> (Hunt and Matthews, 2022). The IFS data used to drive the forecasts are freely available from the ECMWF operational archive: <https://apps.ecmwf.int/archive-catalogue/?class=od> (ECMWF, 2022).

Author contributions. KMRH and FP conceptualised the project. KMRH designed the methodology. KMRH and GRM wrote the software, validated the results, designed the visualisations, and conducted the formal analysis. KMRH, GRM, FP and CP were involved in writing the original draft of the paper, as well as reviewing and editing it. FP and CP were responsible for project administration and funding acquisition.

Competing interests. The contact author has declared that none of the authors has any competing interests.

Disclaimer. Publisher’s note: Copernicus Publications remains neutral with regard to jurisdictional claims in published maps and institutional affiliations.

Acknowledgements. KMRH would like to thank Andy Wood (UCAR) and Kenneth Nowack (Bureau of Reclamation) for constructive discussions during the early phase of this project, and Ervin Zsoter (ECMWF) for helping to debug file transfer issues. The authors would also like to thank the three reviewers (Lennart Schmidt, Frederik Kratzert, and one anonymous) for their very useful discussion comments.

Review statement. This paper was edited by Rohini Kumar and reviewed by Frederik Kratzert, Lennart Schmidt, and one anonymous referee.

References

- Adnan, R. M., Zounemat-Kermani, M., Kuriqi, A., and Kisi, O.: Machine learning method in prediction streamflow considering periodicity component, in: Intelligent data analytics for decision-support systems in hazard mitigation, Springer, 383–403, https://doi.org/10.1007/978-981-15-5772-9_18, 2021.
- Amante, C. and Eakins, B. W.: ETOPO1 1 arc-minute global relief model: procedures, data sources and analysis, Technical Memorandum NESDIS NGDC-24, NOAA, <https://doi.org/10.7289/V5C8276M>, 2009.
- Bennett, A. and Nijssen, B.: Deep learned process parameterizations provide better representations of turbulent heat fluxes in hydrologic models, *Water Resour. Res.*, 57, e2020WR029328, <https://doi.org/10.1029/2020WR029328>, 2021.
- Beven, K. J.: Rainfall-runoff modelling: the primer, John Wiley & Sons, ISBN 978-0-470-71459-1, 2011.
- Booker, D. and Woods, R.: Comparing and combining physically-based and empirically-based approaches for estimating the hy-

- drology of ungauged catchments, *J. Hydrol.*, 508, 227–239, 2014.
- Boucher, M.-A., Quilty, J., and Adamowski, J.: Data Assimilation for Streamflow Forecasting Using Extreme Learning Machines and Multilayer Perceptrons, *Water Resour. Res.*, 56, e2019WR026226, <https://doi.org/10.1029/2019WR026226>, 2019.
- Chadalawada, J., Herath, H., and Babovic, V.: Hydrologically informed machine learning for rainfall-runoff modeling: A genetic programming-based toolkit for automatic model induction, *Water Resour. Res.*, 56, e2019WR026933, <https://doi.org/10.1029/2019WR026933>, 2020.
- Daly, C., Halbleib, M., Smith, J. I., Gibson, W. P., Doggett, M. K., Taylor, G. H., Curtis, J., and Pasteris, P. P.: Physiographically sensitive mapping of climatological temperature and precipitation across the conterminous United States, *Int. J. Climatol.*, 28, 2031–2064, 2008.
- de Melo, G. A., Sugimoto, D. N., Tasinaffo, P. M., Santos, A. H. M., Cunha, A. M., and Dias, L. A. V.: A new approach to river flow forecasting: LSTM and GRU multivariate models, *IEEE Lat. Am. Trans.*, 17, 1978–1986, 2019.
- Ding, Y., Zhu, Y., Wu, Y., Jun, F., and Cheng, Z.: Spatio-temporal attention LSTM model for flood forecasting, in: *IEEE 2019 International Conference on Internet of Things (IThings) and IEEE Green Computing and Communications (GreenCom) and IEEE Cyber, Physical and Social Computing (CPSCom) and IEEE Smart Data (SmartData)*, 14–17 July 2019, Atlanta, GA, USA, 458–465, <https://doi.org/10.1109/iThings/GreenCom/CPSCom/SmartData>, 2019.
- Düben, P., Modigliani, U., Geer, A., Siemen, S., Pappenberger, F., Bauer, P., Brown, A., Palkovic, M., Raoult, B., Wedi, N., and Baousis, V.: Machine learning at ECMWF: A roadmap for the next 10 years, ECMWF, <https://doi.org/10.21957/ge7ckgm>, 2021.
- ECMWF: Archive of operational forecast data, <https://apps.ecmwf.int/archive-catalogue/?class=od>, last access: 1 August 2022.
- Feng, J., Wang, Z., Wu, Y., and Xi, Y.: Spatial and Temporal Aware Graph Convolutional Network for Flood Forecasting, in: *IEEE 2021 International Joint Conference on Neural Networks (IJCNN)*, 18–22 July 2021, Shenzhen, China, 1–8, <https://doi.org/10.1109/IJCNN52387.2021.9533694>, 2021.
- Frame, J. M., Kratzert, F., Raney, A., Rahman, M., Salas, F. R., and Nearing, G. S.: Post-Processing the National Water Model with Long Short-Term Memory Networks for Streamflow Predictions and Model Diagnostics, *J. Am. Water Resour. Assoc.*, 57, 885–905, 2021.
- Frame, J. M., Kratzert, F., Klotz, D., Gauch, M., Shalev, G., Gilon, O., Qualls, L. M., Gupta, H. V., and Nearing, G. S.: Deep learning rainfall-runoff predictions of extreme events, *Hydrol. Earth Syst. Sci.*, 26, 3377–3392, <https://doi.org/10.5194/hess-26-3377-2022>, 2022.
- Freeze, R. A. and Harlan, R. L.: Blueprint for a physically-based, digitally-simulated hydrologic response model, *J. Hydrol.*, 9, 237–258, 1969.
- Gauch, M., Kratzert, F., Klotz, D., Nearing, G., Lin, J., and Hochreiter, S.: Rainfall-runoff prediction at multiple timescales with a single Long Short-Term Memory network, *Hydrol. Earth Syst. Sci.*, 25, 2045–2062, <https://doi.org/10.5194/hess-25-2045-2021>, 2021a.
- Gauch, M., Mai, J., and Lin, J.: The proper care and feeding of CAMELS: How limited training data affects streamflow prediction, *Environ. Model. Softw.*, 135, 104926, <https://doi.org/10.1016/j.envsoft.2020.104926>, 2021b.
- Gers, F. A., Schmidhuber, J., and Cummins, F.: Learning to forget: Continual prediction with LSTM, *Neural Comput.*, 12, 2451–2471, 2000.
- Graves, A., Mohamed, A.-R., and Hinton, G.: Speech recognition with deep recurrent neural networks, in: *2013 IEEE international conference on acoustics, speech and signal processing*, 26–31 May 2013, Vancouver, BC, Canada, 6645–6649, <https://doi.org/10.1109/ICASSP.2013.6638947>, 2013.
- Gupta, H. V., Kling, H., Yilmaz, K. K., and Martinez, G. F.: Decomposition of the mean squared error and NSE performance criteria: Implications for improving hydrological modelling, *J. Hydrol.*, 377, 80–91, 2009.
- Harrigan, S., Zsoter, E., Alfieri, L., Prudhomme, C., Salamon, P., Wetterhall, F., Barnard, C., Cloke, H., and Pappenberger, F.: GloFAS-ERA5 operational global river discharge reanalysis 1979–present, *Earth Syst. Sci. Data*, 12, 2043–2060, <https://doi.org/10.5194/essd-12-2043-2020>, 2020.
- He, Q., Barajas-Solano, D., Tartakovsky, G., and Tartakovsky, A. M.: Physics-informed neural networks for multiphysics data assimilation with application to subsurface transport, *Adv. Water Resour.*, 141, 103610, <https://doi.org/10.1016/j.advwatres.2020.103610>, 2020.
- Hersbach, H., Bell, B., Berrisford, P., Hirahara, S., Horányi, A., Muñoz-Sabater, J., Nicolas, J., Peubey, C., Radu, R., Schepers, D., Simmons, A., Soci, C., Abdalla, A., Abellan, X., Balsamo, G., Bechtold, P., Biavati, G., Bidlot, J., Bonavita, M., De Chiara, G., Dahlgren, P., Dee, D., Diamantakis, M., Dragani, R., Flemming, J., Forbes, R., Fuentes, M., Geer, A., Haimberger, L., Healy, S., Hogan, R. J., Hólm, E., Janisková, M., Keeley, S., Laloyaux, P., Lopez, P., Lupu, C., Radnoti, G., de Rosnay, P., Rozum, I., Vamborg, F., Villaume, S., and Thépaut, J.-N.: The ERA5 global reanalysis, *Q. J. Roy. Meteorol. Soc.*, 146, 1999–2049, 2020.
- Hochreiter, S. and Schmidhuber, J.: Long short-term memory, *Neural Comput.*, 9, 1735–1780, <https://doi.org/10.1162/neco.1997.9.8.1735>, 1997.
- Hoedt, P.-J., Kratzert, F., Klotz, D., Halmich, C., Holzleitner, M., Nearing, G. S., Hochreiter, S., and Klambauer, G.: Mc-lstm: Mass-conserving lstm, in: *International Conference on Machine Learning*, 18–24 July 2021, PMLR, 4275–4286, <http://proceedings.mlr.press/v139/hoedt21a/hoedt21a.pdf> (last access: 26 October 2022), 2021.
- Höge, M., Scheidegger, A., Baity-Jesi, M., Albert, C., and Fenicia, F.: Improving hydrologic models for predictions and process understanding using neural ODEs, *Hydrol. Earth Syst. Sci.*, 26, 5085–5102, <https://doi.org/10.5194/hess-26-5085-2022>, 2022.
- Horton, R. E.: The role of infiltration in the hydrologic cycle, *EOS Trans. Am. Geophys. Union*, 14, 446–460, 1933.
- Hu, Y., Yan, L., Hang, T., and Feng, J.: Stream-flow forecasting of small rivers based on LSTM, arXiv preprint: arXiv:2001.05681, <https://doi.org/10.48550/arXiv.2001.05681>, 2020.
- Huffman, G. J., Adler, R. F., Rudolf, B., Schneider, U., and Keen, P. R.: Global precipitation estimates based on a technique for combining satellite-based estimates, rain gauge analysis, and NWP model precipitation informa-

- tion, *J. Climate*, 8, 1284–1295, [https://doi.org/10.1175/1520-0442\(1995\)008<1284:GPEBOA>2.0.CO;2](https://doi.org/10.1175/1520-0442(1995)008<1284:GPEBOA>2.0.CO;2), 1995.
- Hunt, K. M. R. and Matthews, G. R.: Code for building, testing, and training the models of US LSTM/GloFAS streamflow paper, Zenodo [code], <https://doi.org/10.5281/zenodo.7260860>, 2022.
- Imbeaux, E.: *Annales des Ponts et Chaussées, Mémoires et Documents*, edited by: Dunod, V. C. and Vicq, P., Éditeurs, Paris, 1892.
- Karpatne, A., Atluri, G., Faghmous, J. H., Steinbach, M., Banerjee, A., Ganguly, A., Shekhar, S., Samatova, N., and Kumar, V.: Theory-guided data science: A new paradigm for scientific discovery from data, *IEEE T. Knowl. Data Eng.*, 29, 2318–2331, 2017.
- Kling, H., Fuchs, M., and Paulin, M.: Runoff conditions in the upper Danube basin under an ensemble of climate change scenarios, *J. Hydrol.*, 424, 264–277, 2012.
- Klotz, D., Kratzert, F., Gauch, M., Keefe Sampson, A., Brandstetter, J., Klambauer, G., Hochreiter, S., and Nearing, G.: Uncertainty estimation with deep learning for rainfall-runoff modeling, *Hydrol. Earth Syst. Sci.*, 26, 1673–1693, <https://doi.org/10.5194/hess-26-1673-2022>, 2022.
- Knoben, W. J. M., Freer, J. E., and Woods, R. A.: Technical note: Inherent benchmark or not? Comparing Nash–Sutcliffe and Kling–Gupta efficiency scores, *Hydrol. Earth Syst. Sci.*, 23, 4323–4331, <https://doi.org/10.5194/hess-23-4323-2019>, 2019.
- Kolen, J. and Pollack, J.: Back propagation is sensitive to initial conditions, *Adv. Nneural Inf. Proc. Syst.*, 3, 860–7, <https://doi.org/10.5555/118850.119960>, 1990.
- Kollet, S. J., Maxwell, R. M., Woodward, C. S., Smith, S., Vanderborght, J., Vereecken, H., and Simmer, C.: Proof of concept of regional scale hydrologic simulations at hydrologic resolution utilizing massively parallel computer resources, *Water Resour. Res.*, 46, WR008730, <https://doi.org/10.1029/2009WR008730>, 2010.
- Kratzert, F., Klotz, D., Brenner, C., Schulz, K., and Herrnegger, M.: Rainfall-runoff modelling using Long Short-Term Memory (LSTM) networks, *Hydrol. Earth Syst. Sci.*, 22, 6005–6022, <https://doi.org/10.5194/hess-22-6005-2018>, 2018.
- Kratzert, F., Klotz, D., Herrnegger, M., Sampson, A. K., Hochreiter, S., and Nearing, G. S.: Toward improved predictions in ungauged basins: Exploiting the power of machine learning, *Water Resour. Res.*, 55, 11344–11354, 2019a.
- Kratzert, F., Klotz, D., Shalev, G., Klambauer, G., Hochreiter, S., and Nearing, G.: Towards learning universal, regional, and local hydrological behaviors via machine learning applied to large-sample datasets, *Hydrol. Earth Syst. Sci.*, 23, 5089–5110, <https://doi.org/10.5194/hess-23-5089-2019>, 2019b.
- Le, X.-H., Ho, H. V., Lee, G., and Jung, S.: Application of long short-term memory (LSTM) neural network for flood forecasting, *Water*, 11, 1387, <https://doi.org/10.3390/w11071387>, 2019.
- Lee, D.-G. and Ahn, K.-H.: A stacking ensemble model for hydrological post-processing to improve streamflow forecasts at medium-range timescales over South Korea, *J. Hydrol.*, 600, 126681, <https://doi.org/10.1016/j.jhydrol.2021.126681>, 2021.
- Li, W., Kiaghadi, A., and Dawson, C.: High temporal resolution rainfall-runoff modeling using long-short-term-memory (LSTM) networks, *Neural Comput. Appl.*, 33, 1261–1278, 2021.
- Liang, Z., Tang, T., Li, B., Liu, T., Wang, J., and Hu, Y.: Long-term streamflow forecasting using SWAT through the integration of the random forests precipitation generator: case study of Danjiangkou Reservoir, *Hydrol. Res.*, 49, 1513–1527, 2018.
- Linsley, R. K., Kohler, M. A., and Paulhus, J. L. H.: *Applied Hydrology*, McGraw-Hill Book Company, ISBN 9780071001748, 1949.
- Liu, D., Mishra, A. K., Yu, Z., Lü, H., and Li, Y.: Support vector machine and data assimilation framework for Groundwater Level Forecasting using GRACE satellite data, *J. Hydrol.*, 603, 126929, <https://doi.org/10.1016/j.jhydrol.2021.126929>, 2021.
- Liu, S., Wang, J., Wang, H., and Wu, Y.: Post-processing of hydrological model simulations using the convolutional neural network and support vector regression, *Hydrol. Res.*, 53, 605–621, <https://doi.org/10.2166/nh.2022.004>, 2022.
- Meng, C., Zhou, J., Tayyab, M., Zhu, S., and Zhang, H.: Integrating artificial neural networks into the VIC model for rainfall-runoff modeling, *Water*, 8, 407, <https://doi.org/10.3390/w8090407>, 2016.
- Mulvaney, T. J.: On the use of self-registering rain and flood gauges in making observations of the relations of rainfall and flood discharges in a given catchment, *Proc. Inst. Civ. Eng. Ireland*, 4, 19–31, 1851.
- Nash, J. E. and Sutcliffe, J. V.: River flow forecasting through conceptual models part I – A discussion of principles, *J. Hydrol.*, 10, 282–290, 1970.
- Nearing, G. S., Sampson, A. K., Kratzert, F., and Frame, J.: Post-processing a Conceptual Rainfall-runoff Model with an LSTM, *eartharxiv*, <https://doi.org/10.31223/osf.io/53te4>, 2020.
- Newman, A. J., Clark, M. P., Sampson, K., Wood, A., Hay, L. E., Bock, A., Viger, R. J., Blodgett, D., Brekke, L., Arnold, J. R., Hopson, T., and Duan, Q.: Development of a large-sample watershed-scale hydrometeorological data set for the contiguous USA: data set characteristics and assessment of regional variability in hydrologic model performance, *Hydrol. Earth Syst. Sci.*, 19, 209–223, <https://doi.org/10.5194/hess-19-209-2015>, 2015.
- Nocedal, J. and Wright, S.: *Numerical optimization*, Springer Science & Business Media, https://doi.org/10.1007/0-387-22742-3_18, 2006.
- Noori, N. and Kalin, L.: Coupling SWAT and ANN models for enhanced daily streamflow prediction, *J. Hydrol.*, 533, 141–151, <https://doi.org/10.1016/j.jhydrol.2015.11.050>, 2016.
- Okkan, U., Ersoy, Z. B., Kumanlioglu, A. A., and Fistikoglu, O.: Embedding machine learning techniques into a conceptual model to improve monthly runoff simulation: A nested hybrid rainfall-runoff modeling, *J. Hydrol.*, 598, 126433, <https://doi.org/10.1016/j.jhydrol.2021.126433>, 2021.
- Pappenberger, F., Ramos, M.-H., Cloke, H. L., Wetterhall, F., Alfieri, L., Bogner, K., Mueller, A., and Salamon, P.: How do I know if my forecasts are better? Using benchmarks in hydrological ensemble prediction, *J. Hydrol.*, 522, 697–713, <https://doi.org/10.1016/j.jhydrol.2015.01.024>, 2015.
- Rackauckas, C., Ma, Y., Martensen, J., Warner, C., Zubov, K., Supekar, R., Skinner, D., Ramadhan, A., and Edelman, A.: Universal differential equations for scientific machine learning, *arXiv preprint: arXiv:2001.04385*, <https://doi.org/10.48550/arXiv.2001.04385>, 2020.
- Raissi, M., Perdikaris, P., and Karniadakis, G.: Physics-informed neural networks: A deep learning framework for solving forward and inverse problems involving nonlinear par-

- tial differential equations, *J. Comput. Phys.*, 378, 686–707, <https://doi.org/10.1016/j.jcp.2018.10.045>, 2019.
- Raissi, M., Yazdani, A., and Karniadakis, G. E.: Hidden fluid mechanics: Learning velocity and pressure fields from flow visualizations, *Science*, 367, 1026–1030, 2020.
- Reichstein, M., Camps-Valls, G., Stevens, B., Jung, M., Denzler, J., Carvalhais, N., and Prabhat: Deep learning and process understanding for data-driven Earth system science, *Nature*, 566, 195–204, 2019.
- Robock, A., Vinnikov, K. Y., Srinivasan, G., Entin, J. K., Hollinger, S. E., Speranskaya, N. A., Liu, S., and Namkhai, A.: The global soil moisture data bank, *B. Am. Meteorol. Soc.*, 81, 1281–1300, 2000.
- Ross, C. N.: The calculation of flood discharge by the use of time contour plan isochrones, *T. Inst. Eng. Aust.*, 2, 85–92, 1921.
- Sahoo, B. B., Jha, R., Singh, A., and Kumar, D.: Long short-term memory (LSTM) recurrent neural network for low-flow hydrological time series forecasting, *Acta Geophys.*, 67, 1471–1481, 2019.
- Schiemann, R., Vidale, P. L., Shaffrey, L. C., Johnson, S. J., Roberts, M. J., Demory, M.-E., Mizielinski, M. S., and Strachan, J.: Mean and extreme precipitation over European river basins better simulated in a 25 km AGCM, *Hydrol. Earth Syst. Sci.*, 22, 3933–3950, <https://doi.org/10.5194/hess-22-3933-2018>, 2018.
- Sha, Y., Gagne II, D. J., West, G., and Stull, R.: Deep-learning-based precipitation observation quality control, *J. Atmos. Ocean. Tech.*, 38, 1075–1091, 2021.
- Sharma, S., Ghimire, G. R., and Siddique, R.: Machine learning for postprocessing ensemble streamflow forecasts, arXiv preprint: arXiv:2106.09547, <https://doi.org/10.48550/arXiv.2106.09547>, 2021.
- Shen, C. and Lawson, K.: Applications of Deep Learning in Hydrology, in: *Deep Learning for the Earth Sciences: A Comprehensive Approach to Remote Sensing, Climate Science, and Geosciences*, Wiley Online Library, 283–297, <https://doi.org/10.1002/9781119646181.ch19>, 2021.
- Silva, D. F. C., Galvão Filho, A. R., Carvalho, R. V., d. Ribeiro, F. S. L., and Coelho, C. J.: Water Flow Forecasting Based on River Tributaries Using Long Short-Term Memory Ensemble Model, *Energies*, 14, 7707, <https://doi.org/10.3390/en14227707>, 2021.
- Slater, L. J., Anderson, B., Buechel, M., Dadson, S., Han, S., Harrigan, S., Kelder, T., Kowal, K., Lees, T., Matthews, T., Murphy, C., and Wilby, R. L.: Nonstationary weather and water extremes: a review of methods for their detection, attribution, and management, *Hydrol. Earth Syst. Sci.*, 25, 3897–3935, <https://doi.org/10.5194/hess-25-3897-2021>, 2021.
- Sudriani, Y., Ridwansyah, I., and Rustini, H. A.: Long short term memory (LSTM) recurrent neural network (RNN) for discharge level prediction and forecast in Cimandiri river, Indonesia, in: *IOP Conference Series: Earth and Environmental Science*, IOP Publishing, 299, 012037, <https://doi.org/10.1088/1755-1315/299/1/012037>, 2019.
- Teweldebrhan, A. T., Schuler, T. V., Burkhart, J. F., and Hjorth-Jensen, M.: Coupled machine learning and the limits of acceptability approach applied in parameter identification for a distributed hydrological model, *Hydrol. Earth Syst. Sci.*, 24, 4641–4658, <https://doi.org/10.5194/hess-24-4641-2020>, 2020.
- Thrasher, B., Maurer, E. P., McKellar, C., and Duffy, P. B.: Technical Note: Bias correcting climate model simulated daily temperature extremes with quantile mapping, *Hydrol. Earth Syst. Sci.*, 16, 3309–3314, <https://doi.org/10.5194/hess-16-3309-2012>, 2012.
- Vaswani, A., Shazeer, N., Parmar, N., Uszkoreit, J., Jones, L., Gomez, A. N., Kaiser, Ł., and Polosukhin, I.: Attention is all you need, *Advances in neural information processing systems*, 30, <https://proceedings.neurips.cc/paper/2017/file/3f5ee243547dee91fbd053c1c4a845aa-Paper.pdf> (last access: 28 October 2022), 2017.
- Wagena, M. B., Goering, D., Collick, A. S., Bock, E., Fuka, D. R., Buda, A., and Easton, Z. M.: Comparison of short-term streamflow forecasting using stochastic time series, neural networks, process-based, and Bayesian models, *Environ. Model. Softw.*, 126, 104669, <https://doi.org/10.1016/j.envsoft.2020.104669>, 2020.
- Wood, E. F., Roundy, J. K., Troy, T. J., Van Beek, L. P. H., Bierkens, M. F. P., Blyth, E., de Roo, A., Döll, P., Ek, M., Famiglietti, J., Gochis, D., van de Giesen, N., Houser, P., Jaffé, P. R., Kollet, S., Lehner, B., Lettenmaier, D. P., Peters-Lidard, C., Sivapalan, M., Sheffield, J., Wade, A., and Whitehead, P.: Hyperresolution global land surface modeling: Meeting a grand challenge for monitoring Earth’s terrestrial water, *Water Resour. Res.*, 47, W05301, <https://doi.org/10.1029/2010WR010090>, 2011.
- Xu, R., Zhang, D., Rong, M., and Wang, N.: Weak form theory-guided neural network (TgNN-wf) for deep learning of subsurface single- and two-phase flow, *J. Comput. Phys.*, 436, 110318, <https://doi.org/10.1016/j.jcp.2021.110318>, 2021.
- Zhu, S., Luo, X., Yuan, X., and Xu, Z.: An improved long short-term memory network for streamflow forecasting in the upper Yangtze River, *Stoch. Environ. Res. Risk A.*, 34, 1313–1329, 2020.
- Zsoter, E., Harrigan, S., Wetterhall, G., Salamon, P., and Prudhomme, C.: River discharge and related forecasted data from the Global Flood Awareness System, v2.1, Copernicus Climate Change Service (C3S) Climate Data Store (CDS) [data set], <https://doi.org/10.24381/cds.ff1aef77>, 2019a.
- Zsoter, E., Harrigan, S., Wetterhall, G., Salamon, P., and Prudhomme, C.: River discharge and related forecasted data from the Global Flood Awareness System, v2.1, Copernicus Climate Change Service (C3S) Climate Data Store (CDS) [data set], <https://doi.org/10.24381/cds.a4fdd6b9>, 2019b.
- Zsoter, E., Prudhomme, C., Stephens, E., Pappenberger, F., and Cloke, H.: Using ensemble reforecasts to generate flood thresholds for improved global flood forecasting, *J. Flood Risk Manage.*, 13, e12658, <https://doi.org/10.1111/jfr3.12658>, 2020.
- Zsoter, E., Harrigan, S., Barnard, C., Wetterhall, G., Ferrario, I., Mazzetti, C., Alfieri, L., Salamon, P., and Prudhomme, C.: River discharge and related forecasted data from the Global Flood Awareness System, v3.1, Copernicus Climate Change Service (C3S) Climate Data Store (CDS) [data set], <https://doi.org/10.24381/cds.ff1aef77>, 2021.