

# *A secondary metabolite drives intraspecies antagonism in a gut symbiont that is inhibited by cell-wall acetylation*

Article

Published Version

Creative Commons: Attribution-Noncommercial-No Derivative Works 4.0

Open Access

Özçam, M., Oh, J.-H., Tocmo, R. ORCID: <https://orcid.org/0009-0007-4850-977X>, Acharya, D., Zhang, S., Astmann, T. J., Heggen, M., Ruiz-Ramírez, S., Li, F., Cheng, C. C., Vivas, E., Rey, F. E., Claesen, J., Bugni, T. S., Walter, J. and van Pijkeren, J.-P. (2022) A secondary metabolite drives intraspecies antagonism in a gut symbiont that is inhibited by cell-wall acetylation. *Cell Host & Microbe*, 30 (6). pp. 824-835. ISSN 1934-6069 doi: <https://doi.org/10.1016/j.chom.2022.03.033> Available at <https://centaur.reading.ac.uk/117257/>

It is advisable to refer to the publisher's version if you intend to cite from the work. See [Guidance on citing](#).

To link to this article DOI: <http://dx.doi.org/10.1016/j.chom.2022.03.033>

Publisher: Elsevier

All outputs in CentAUR are protected by Intellectual Property Rights law, including copyright law. Copyright and IPR is retained by the creators or other copyright holders. Terms and conditions for use of this material are defined in the [End User Agreement](#).

[www.reading.ac.uk/centaur](http://www.reading.ac.uk/centaur)

**CentAUR**

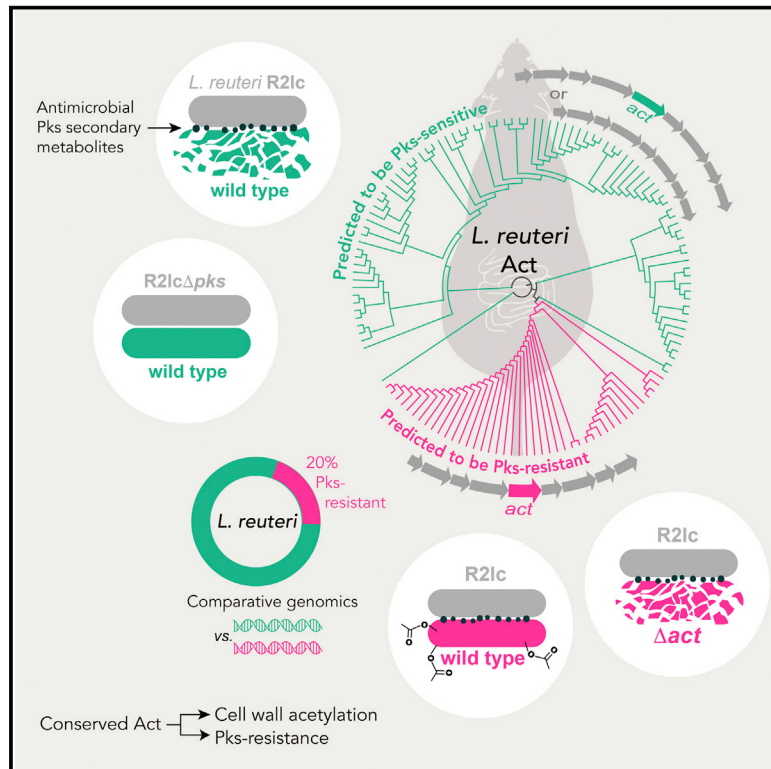
Central Archive at the University of Reading

Reading's research outputs online

# Cell Host & Microbe

## A secondary metabolite drives intraspecies antagonism in a gut symbiont that is inhibited by cell-wall acetylation

### Graphical abstract



### Authors

Mustafa Özçam, Jee-Hwan Oh, Restituto Tocmo, ..., Tim S. Bugni, Jens Walter, Jan-Peter van Pijkeren

### Correspondence

vanpijkeren@wisc.edu

### In brief

Özçam et al. show that *L. reuteri* strains encode an antimicrobial polyketide (Pks), which provides a competitive advantage in the gut. Select strains that can co-exist with *L. reuteri* encode a conserved acyltransferase (Act), which acetylates cell-wall components. Wild type, but not Δpks, outcompetes act mutants *in vivo*.

### Highlights

- *Limosilactobacillus reuteri* strains produce an antimicrobial polyketide (Pks)
- Pks provides a competitive advantage in the gastrointestinal tract
- Strains resistant to Pks-mediated killing encode a conserved acyltransferase (Act)
- Act acetylates the *L. reuteri* cell wall to yield resistance to Pks-mediated killing



Article

# A secondary metabolite drives intraspecies antagonism in a gut symbiont that is inhibited by cell-wall acetylation

Mustafa Özçam,<sup>1,10</sup> Jee-Hwan Oh,<sup>1</sup> Restituto Tocmo,<sup>1,11</sup> Deepa Acharya,<sup>2</sup> Shenwei Zhang,<sup>1</sup> Theresa J. Astmann,<sup>1</sup> Mark Heggen,<sup>1</sup> Silvette Ruiz-Ramirez,<sup>1</sup> Fuyong Li,<sup>3,12</sup> Christopher C. Cheng,<sup>4</sup> Eugenio Vivas,<sup>5</sup> Federico E. Rey,<sup>5</sup> Jan Claesen,<sup>6</sup> Tim S. Bugni,<sup>2</sup> Jens Walter,<sup>3,4,7,8</sup> and Jan-Peter van Pijkeren<sup>1,9,13,\*</sup>

<sup>1</sup>Department of Food Science, University of Wisconsin-Madison, Madison, WI 53706, USA

<sup>2</sup>Pharmaceutical Sciences Division, University of Wisconsin-Madison, Madison, WI 53705, USA

<sup>3</sup>Department of Agricultural, Food and Nutritional Science, University of Alberta, Edmonton, AB T6G 2P5, Canada

<sup>4</sup>Department of Biological Sciences, University of Alberta, Edmonton, AB T6G 2P5, Canada

<sup>5</sup>Department of Bacteriology, University of Wisconsin-Madison, Madison, WI 53706, USA

<sup>6</sup>Department of Cardiovascular and Metabolic Sciences and Center for Microbiome and Human Health, Lerner Research Institute, Cleveland Clinic, Cleveland, OH 44195, USA

<sup>7</sup>Department of Medicine and APC Microbiome Ireland, University College Cork, Cork T12 K8AF, Ireland

<sup>8</sup>School of Microbiology, University College Cork, Cork T12 YT20, Ireland

<sup>9</sup>Food Research Institute, University of Wisconsin-Madison, Madison, WI 53706, USA

<sup>10</sup>Present address: Division of Gastroenterology, Department of Medicine, University of California, San Francisco, San Francisco, CA 94141, USA

<sup>11</sup>Present address: Immunomodulation Group, School of Biotechnology, Dublin City University, Glasnevin, Dublin 9, Ireland

<sup>12</sup>Present address: Department of Infectious Diseases and Public Health, Jockey Club College of Veterinary Medicine and Life Sciences, City University of Hong Kong, Kowloon, Hong Kong SAR, China

<sup>13</sup>Lead contact

\*Correspondence: [vanpijkeren@wisc.edu](mailto:vanpijkeren@wisc.edu)

<https://doi.org/10.1016/j.chom.2022.03.033>

## SUMMARY

The mammalian microbiome encodes numerous secondary metabolite biosynthetic gene clusters; yet, their role in microbe-microbe interactions is unclear. Here, we characterized two polyketide synthase gene clusters (*fun* and *pks*) in the gut symbiont *Limosilactobacillus reuteri*. The *pks*, but not the *fun*, cluster encodes antimicrobial activity. Forty-one of 51 *L. reuteri* strains tested are sensitive to Pks products; this finding was independent of strains' host origin. Sensitivity to Pks was also established in intraspecies competition experiments in gnotobiotic mice. Comparative genome analyses between Pks-resistant and -sensitive strains identified an acyltransferase gene (*act*) unique to Pks-resistant strains. Subsequent cell-wall analysis of wild-type and *act* mutant strains showed that Act acetylates cell-wall components, providing resistance to Pks-mediated killing. Additionally, *pks* mutants lost their competitive advantage, while *act* mutants lost their Pks resistance in *in vivo* competition assays. These findings provide insight into how closely related gut symbionts can compete and co-exist in the gastrointestinal tract.

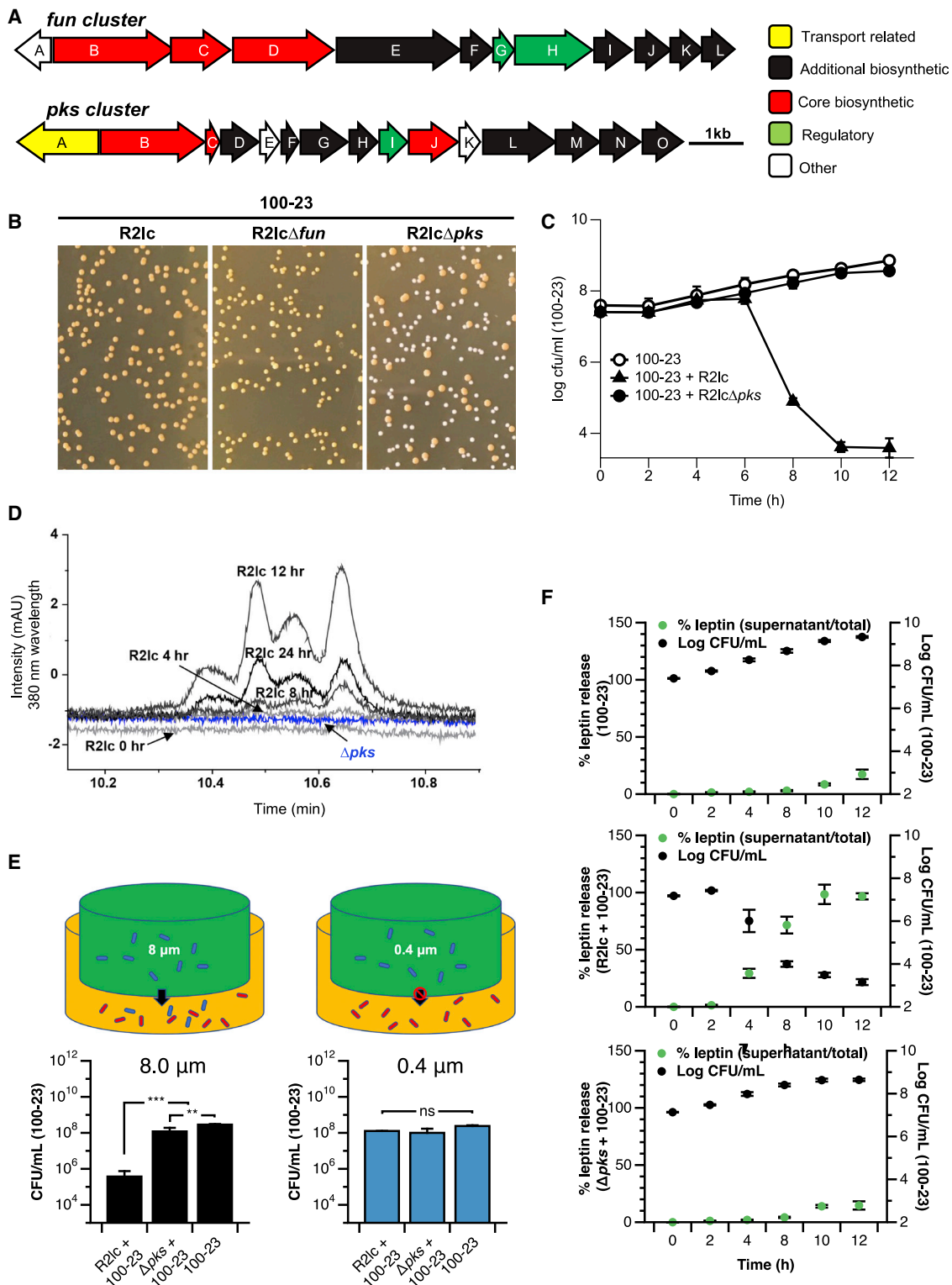
## INTRODUCTION

The mammalian gastrointestinal tract is inhabited by trillions of microorganisms that co-exist with their host (Sender et al., 2016). While factors such as host genetics, immune status, nutritional resources, and colonization history affect microbial composition (Bonder et al., 2016; David et al., 2014; Hooper et al., 2015; Martínez et al., 2018; Snijders et al., 2016; Turnbaugh et al., 2009; Zarrinpar et al., 2014), the relationship between microbes is determined by competitive interactions (Boon et al., 2014). Bacteria have developed numerous strategies that mediate survival and competition, including the production of broad and narrow spectrum antimicrobials (Sassone-Corsi et al., 2016). On the other hand, acquisition of

resistance genes and/or modification of the cell wall can help bacteria survive the antimicrobial warfare in the gut (Murray and Shaw, 1997).

Some bacterial secondary metabolites have antimicrobial activity against other community members. Their interactions—known as interference competition—are important in the assembly and the maintenance of microbial communities (Jacobson et al., 2018). Most secondary metabolites are produced by biosynthetic gene clusters (BGCs). A prominent subclass of BGCs are polyketide synthase (PKS) gene clusters, which biosynthesize carbon chain backbones from the repeated condensation of acyl-CoA building blocks (Lin et al., 2015; Medema et al., 2014). A survey of 2,430 reference genomes from the Human Microbiome Project uncovered more than 3,000





**Figure 1. A polyketide synthase cluster in *L. reuteri* R2lc produces polyene-like compounds that lyse competitor strains**

(A) The *fun* cluster (top) spans 13.4 kb containing 12 open reading frames (ORFs), and the *pks* cluster (bottom) spans 12.4 kb containing 15 ORFs. Transport-related, additional biosynthetic, regulatory, and other genes are represented by different colors. See also Figure S1.

(B) R2lc and R2lc $\Delta$ *fun*, but not R2lc $\Delta$ *pks*, inhibits *L. reuteri* 100-23.

(C) R2lc has bactericidal effect against 100-23. Single culture ( $OD_{600} = 0.1$ ) or co-cultures ( $OD_{600} = 0.05$  from each strain) were mixed and incubated in MRS broth (pH 4.0, 37°C), and samples were collected every 2 h for up to 12 h. See also Figure S2.

(legend continued on next page)

BGCs (Donia et al., 2014). So far, only seven PKS-like BGCs encoded by gut-associated bacteria have been functionally characterized (Figure S1).

As a class of PKS products, aryl polyenes are lipids with an aryl head group conjugated to a polyene tail (Lin et al., 2015) and are widely distributed in soil and host-associated bacteria (Cimermancic et al., 2014; Youngblut et al., 2020). Although, many polyene compounds isolated from terrestrial and marine microbes possess antimicrobial effects *in vitro* (Herbrük et al., 2020; Lee et al., 2020; Li et al., 2021; Zhao et al., 2021), virtually nothing is known about their ecological role in microbe-host and microbe-microbe interactions in the mammalian gastrointestinal tract (Aleti et al., 2019). While metagenome studies are critically important to identify novel polyene-like BGCs within the microbiome (Hiergeist et al., 2015; Medema et al., 2011), the assessment of model organisms and their isogenic mutants in the appropriate ecological context is critical to advance our knowledge on the biological function of these BGC-derived compounds.

*Limosilactobacillus reuteri*, until recently known as *Lactobacillus reuteri* (Zheng et al., 2020), is a gut symbiont species that inhabits the gastrointestinal tract of various vertebrates, including rodents, birds, and primates (Duar et al., 2017). This, combined with the available genome editing tools (Oh and Van Pijkeren, 2014; Van Pijkeren et al., 2012; Zhang et al., 2018), make *L. reuteri* an ideal model organism to study microbe-microbe, microbe-phage, and microbe-host interactions (Lin et al., 2018; Oh et al., 2019; Özçam et al., 2019; Walter et al., 2011). Previously, we screened a *L. reuteri* strain library derived from different hosts and identified that *L. reuteri* R2lc activates the aryl hydrocarbon receptor (AhR), a ligand activated transcription factor that plays an important role in mucosal immunity by inducing the production of interleukin-22 (Zelante et al., 2013). By whole-genome sequencing, comparative genomics, and targeted gene deletion, we identified that R2lc harbors two genetically distinct PKS clusters (*pks* and *fun*), each encoded from a multi-copy plasmid. We demonstrated that the *pks* but not the *fun* cluster is responsible for R2lc-mediated AhR activation (Özçam et al., 2019).

In this study, we found that the *pks* cluster in *L. reuteri* R2lc also encodes antimicrobial activity. Intraspecies competition experiments in gnotobiotic mice with the wild-type and the *pks* deletion mutant revealed that Pks expression can provide a competitive advantage. Remarkably, a small number *L. reuteri* strains were resistant to the antimicrobial activity of Pks. We discovered this resistance was driven by a gene encoding an acyltransferase (Act) that increases acetylation of the cell wall. Thus, our findings uncovered mechanisms by which gut symbionts can compete and co-exist with closely related strains through secondary metabolite production and cell-wall modification.

## RESULTS

### *L. reuteri* Pks inhibits the competitor strain

The rodent isolate *L. reuteri* R2lc contains two PKS clusters, *fun* and *pks* (Figure 1A). In both the human and rodent gut ecosystem, *L. reuteri* R2lc outcompetes most *L. reuteri* strains, including the rodent isolate *L. reuteri* 100-23 (Duar et al., 2017; Oh et al., 2010). Because select PKS products have antimicrobial activity (Lin et al., 2015), we tested to what extent Pks and Fun provide strain R2lc with a competitive advantage. We performed *in vitro* competition experiments in batch cultures using 1:1 mixtures of the rodent gut isolates *L. reuteri* 100-23 and *L. reuteri* R2lc wild type, or our previously generated PKS mutants (R2lc $\Delta$ *fun* or R2lc $\Delta$ *pks*) (Özçam et al., 2019). Following 24 h of incubation, the mixed cultures were plated. On agar, R2lc and its derivatives form pigmented colonies, while 100-23 colonies are opaque in color. Co-incubation of R2lc + 100-23 or R2lc $\Delta$ *fun* + 100-23 only recovered pigmented colonies; however, co-incubation of R2lc $\Delta$ *pks* + 100-23 yielded a mixture of pigmented and opaque-colored colonies (% pigmented:opaque colony distribution is 29:71) (Figure 1B). These data suggest that the *pks* gene cluster, but not the *fun* gene cluster, provides strain R2lc with a competitive advantage when co-cultured with *L. reuteri* 100-23.

### *L. reuteri* Pks has a time-dependent bactericidal effect

To understand the dynamics by which R2lc outcompetes 100-23, we performed a time course competition experiment in batch cultures. Mixtures (1:1, OD<sub>600</sub> = 0.05 per strain) were prepared of R2lc + 100-23, and R2lc $\Delta$ *pks* + 100-23. As a control, a monoculture of 100-23 was grown. We harvested samples every 2 h and determined the colony-forming units (CFUs) levels by standard plate count. We observed that R2lc and R2lc $\Delta$ *pks* have a similar growth dynamic ( $\mu_{\max}$  of R2lc =  $0.19 \pm 0.02$ ,  $\mu_{\max}$  of R2lc $\Delta$ *pks* =  $0.16 \pm 0.003$ ,  $p = 0.18$ ), and 100-23 grows slightly faster compared with R2lc and R2lc $\Delta$ *pks* in monoculture (Figure S2A). Up to 6 h, mixtures of R2lc + 100-23 and R2lc $\Delta$ *pks* + 100-23 yielded similar levels of 100-23 colonies, which were comparable to the levels obtained when 100-23 was cultured independently. However, after 8 and 10 h of co-incubation of R2lc + 100-23, 100-23-CFU levels were reduced by three and five orders of magnitude, respectively, while 100-23 continued to grow in the R2lc $\Delta$ *pks* + 100-23 mixture (Figure 1C). Importantly, the sharp decline in 100-23 CFU counts suggests Pks elicits a strong bactericidal activity against 100-23. Also, the fact that killing of 100-23 is initiated after 6 h of co-culture suggests that production of Pks may be growth phase dependent.

In mice, *L. reuteri*—including strain 100-23—form a biofilm on the stratified squamous epithelium of the forestomach (Frese et al., 2013; Lin et al., 2018; Savage et al., 1968). Cell numbers

(D) UPLC-PDA-MS analysis of R2lc and  $\Delta$ *pks* mutant. R2lc, but not  $\Delta$ *pks*, produces unique compounds with a maximum absorption of 380 nm (black: R2lc, blue:  $\Delta$ *pks*). See also Figure S3.

(E) R2lc-Pks-mediated killing requires cell-cell interaction. Growth (24 h) of R2lc and 100-23 separated by a 8- $\mu$ m filter resulted in killing of 100-23 in a Pks-dependent manner (top left schematic; black bars) while separation by a 0.4- $\mu$ m filter (top right schematic; blue bars) did not affect 100-23 survival, as determined by viable plate count. ns: no statistical significance ( $p > 0.05$ ); \*\* $p < 0.01$ ; \*\*\* $p < 0.001$ . See also Figure S4.

(F) R2lc-Pks lyses competitor strain 100-23. Strain 100-23 was engineered to accumulate recombinant leptin intracellularly. Percentage leptin released (primary y axis; green) and bacterial counts of 100-23 (secondary y axis; black) were determined for a monoculture of 100-23 (top panel) and co-cultures of R2lc + 100-23 (middle panel) and R2lc $\Delta$ *pks* + 100-23 (bottom panel). All data shown are means  $\pm$  SD and are based on three biological replicates.

of 100-23, R2lc, or R2lc $\Delta$ pks in biofilms were similar ( $4.3 \times 10^8 \pm 2.6 \times 10^8$ ,  $2.0 \times 10^8 \pm 3.0 \times 10^7$ ,  $1.7 \times 10^8 \pm 4.1 \times 10^7$  CFU/mL, respectively) (Figure S2B). In biofilm co-cultures, however, R2lc was 750-fold more abundant than 100-23 ( $p = 0.002$ ). The ability of R2lc to outcompete 100-23 in biofilm is mediated by Pks, because co-incubation of R2lc $\Delta$ pks with 100-23 recovered similar levels of CFUs for both strains ( $p = 0.27$ ) (Figure S2B).

### L. reuteri pks cluster produces unique polyene-like compounds

To gain more insight into *L. reuteri* R2lc Pks production *in vitro*, we performed ultra-performance liquid chromatography coupled with photodiode array and mass spectrometer (UPLC-PDA-MS) analysis. By comparing the chromatograms obtained from R2lc and R2lc $\Delta$ pks cultures, we found that R2lc produces a family of unique compounds with a maximum wavelength of 380 nm. These compounds eluted toward the end of the gradient run where the solvent composition was close to 100% methanol, indicating a hydrophobic characteristic. The large retention time of the compounds on the C18 column and the maximum absorption wavelength are consistent with previously identified polyene compounds (Gruber and Steglich, 2007). Therefore, the putative products of the pks cluster are predicted to be polyene compounds.

The UV chromatogram extracted from the R2lc culture at different time points shows an increase in the production of these compounds up to 12 h of incubation, after which the intensity reduces as shown in samples at 24 h (Figure 1D). We subsequently analyzed the liquid chromatography-mass spectrometry (LC-MS) data of R2lc and  $\Delta$ pks samples collected above to identify the polyene products produced by R2lc. The mass spectrum of the peak between 10.52–10.58 min in the R2lc chromatogram at 12 h clearly showed an ion with  $m/z$  [M+H]<sup>+</sup> value of 257.1172 and corresponding  $m/z$  [M+Na]<sup>+</sup> value of 279.0092, which were absent in the 12-h culture of  $\Delta$ pks (Figure S3). The high-resolution mass for the compound led to the predicted molecular formula of C<sub>16</sub>H<sub>16</sub>O<sub>3</sub>. The reduction of Pks compounds after 12 h of incubation suggests instability of Pks molecules in our experimental setup. Taken together, these data suggest that the antibacterial compound is produced in a time-dependent manner.

### Pks-producing L. reuteri R2lc lyses competitor strain through cell-cell interaction

To further enhance our understanding of *L. reuteri* R2lc Pks-mediated killing, we performed an experiment where strains R2lc and 100-23 were cultured in individual chambers separated by a 0.4- or 8- $\mu$ m filter (Figure 1E [top schematic]). The 0.4- and 8- $\mu$ m membranes will allow flowthrough of small molecules, metabolites, and secreted soluble proteins; only the 8- $\mu$ m membrane allows flowthrough of bacteria. When the chambers were separated by a 8- $\mu$ m filter, we recovered  $\sim$ 1,000-fold less 100-23 bacteria in the presence of R2lc wild-type compared with the 100-23 monoculture ( $p < 0.001$ ). In the presence of R2lc $\Delta$ pks, levels of 100-23 were 3-fold less compared with the 100-23 monoculture (Figure 1E [left panels];  $p < 0.01$ ). Viability of 100-23 was not impacted by R2lc when the chambers were separated by a 0.4- $\mu$ m filter (Figure 1E [right panels]). Since we did not observe antimicrobial activity when cultures were separated by a 0.4- $\mu$ m membrane, which does allow flowthrough of

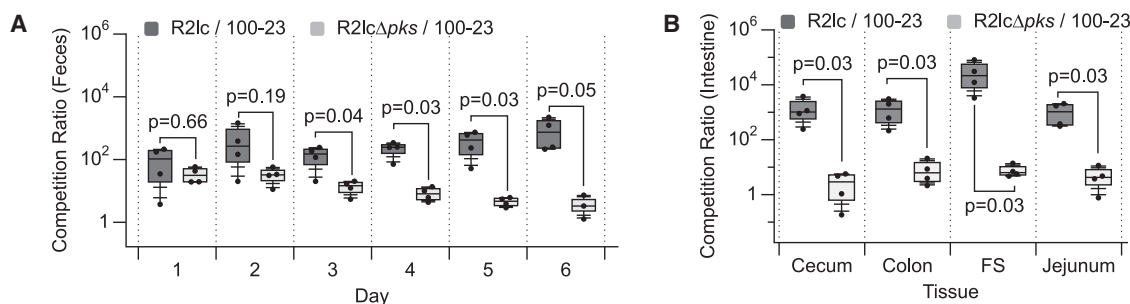
metabolites, it is plausible that the antimicrobial compound is not secreted into the extracellular milieu.

To expand on these findings, we performed double-layer agar diffusion assays with (1) filter-sterilized cell-free supernatant of R2lc, (2) methanol and acetone extracts of the supernatant, (3) live R2lc cells in De Man Rogosa Sharpe (MRS) and PBS, and (4) R2lc cells killed following heat or acetone treatment. Our findings further validate that the antimicrobial compound is not secreted (Figures S4A and S4B [top panels]); instead, only antimicrobial activity is observed when a cell suspension of viable R2lc (Figures S4C and S4D [top panels]) is used whereas no zone of inhibition was observed with a cell suspension of viable R2lc $\Delta$ pks (Figure S4 [bottom panels]). In conclusion, to elicit an antimicrobial effect, strain R2lc requires to be metabolically active, and our data strongly suggest that cell-cell interaction is required.

Next, we designed an experiment to determine if Pks-producing *L. reuteri* R2lc lyses the target cells using an analogous approach as we previously established (Alexander et al., 2019). We developed 100-23/leptin, a derivative of strain 100-23 that is engineered to accumulate leptin intracellularly. Following 12-h batch culture of the 100-23/leptin monoculture, less than 15% of the total amount of recombinant leptin was released in the supernatant (Figure 1F [top panel]). We expect that this relatively small amount of leptin is derived from natural lysis, for example, by biologically active prophages present in 100-23 (Oh et al., 2019). When R2lc Pks is co-cultured with 100-23/leptin, we found that a significant reduction of 100-23 CFU count directly correlates to an increase of leptin in the supernatant (Figure 1F [middle panel]). However, the co-culture of R2lc $\Delta$ pks + 100-23/leptin (Figure 1F [bottom panel]) yielded levels of 100-23 and leptin that were comparable to those observed in the 100-23/leptin monoculture. Collectively, these data show that *L. reuteri* R2lc needs to be alive and likely requires cell-cell contact to elicit a Pks-mediated bactericidal effect that leads to lysis of the competitor strain.

### L. reuteri Pks molecules provide a competitive advantage in vivo

To characterize the ecological role of the pks antibacterial secondary metabolite gene cluster *in vivo*, we gavaged germ-free mice ( $n = 4$ /group) with a 1:1 mixture of R2lc + 100-23, or R2lc $\Delta$ pks + 100-23. To quantify each strain in the fecal material, we engineered R2lc and its derivatives to encode chloramphenicol (Cm) resistance (R2lc::Cm and R2lc $\Delta$ pks::Cm) while strain 100-23 was rifampicin (Rif) resistant (100-23—rifampicin-resistant [Rif<sup>r</sup>]). We determined the competition ratio between R2lc and 100-23 (competition ratio: R2lc CFU count/competitor strain's CFU count) over a period of 6 days in feces. We found that *L. reuteri* R2lc wild-type, but not the  $\Delta$ pks, mutant gradually outcompetes the 100-23 strain. The R2lc:100-23 competition ratio increased from 107:1 (day 1) up to 980:1 (day 6), while the competition ratio between R2lc $\Delta$ pks:100-23 declined from 35:1 (day 1) to 4:1 (day 6) (Figure 2A). Similarly, the R2lc:100-23 competition ratio was higher than the R2lc $\Delta$ pks:100-23 competition ratio in the forestomach (31,973-fold versus 7.8-fold,  $p = 0.03$ ), cecum (1,515- versus 2.9-fold,  $p = 0.03$ ), colon (1,474- versus 8.9-fold,  $p = 0.03$ ), and jejunum (1,114- versus 5.2-fold,  $p = 0.03$ ) (Figure 2B). Thus, our findings demonstrate that Pks provides *L. reuteri* R2lc with a competitive advantage throughout the murine intestinal tract.



**Figure 2. *L. reuteri* Pks molecules provide a competitive advantage *in vivo***

A 1:1 mixture of R2lc + 100-23, or R2lcΔpks + 100-23 was administered by oral gavage to germ-free mice.

(A and B) (A) Competition ratios of the indicated strains in fecal and (B) intestinal content (day 6) were determined. In box and whisker plots, the whiskers represent the maximum and minimal values, and the lower, middle, and upper line of the box represent first quartile, median, and third quartile, respectively. Circles represent data from individual mouse. Statistical significance was determined by Wilcoxon/Kruskal-Wallis tests;  $p < 0.05$  is considered statistically significant. F.S., forestomach.

### ***L. reuteri* Pks-mediated antimicrobial effect is strain specific**

Now we established that *L. reuteri* Pks provides an *in vivo* and *in vitro* competitive advantage against strain 100-23, we next investigated to what extent Pks-mediated killing is strain specific. We performed *in vitro* competition experiments with 51 *L. reuteri* gut isolates from different host origins: human, rat, mouse, chicken, and pig. To quantify strains, we used derivatives of R2lc and R2lcΔpks that were engineered to be chloramphenicol resistant. For each competitor strain we isolated a natural rifampicin-resistant mutant. Strain R2lc and the competitor strain were mixed 1:1 in MRS medium adjusted to pH 4.0, which is pH of the forestomach, the natural habitat of strain R2lc. The co-cultures were incubated for 24 h, and appropriate dilutions were plated on MRS plates containing chloramphenicol (5 μg/mL, for R2lc and R2lcΔpks) or rifampicin (25 μg/mL, for competitor strain). Competition ratios were determined after 24 h of incubation.

Based on non-parametric statistical tests, we identified that R2lc inhibits 41 out of 51 (80.4%) *L. reuteri* strains. Specifically, 6 out of 9 (66.6%) rat isolates, 7 out of 10 (70%) mouse isolates, 16 out of 18 (89%) pig isolates, 8 out of 9 (88.9%) chicken isolates, and 2 out of 5 (40%) human isolates were significantly inhibited by R2lc (R2lc versus competitor CFU,  $p < 0.05$ ). To test if the competitive advantage of R2lc is driven by Pks, we repeated the competition experiments with R2lcΔpks. We found that deletion of the *pks* cluster resulted in loss of antimicrobial activity and the Δpks mutant did not show strong inhibition against competitor strains. However, Δpks mutant still inhibited some competitor strains (16 out of 51) to a small extent, with observed differences in CFUs between Δpks and competitor strains less than two orders of magnitude (Figure 3). These data demonstrate that R2lc-Pks-mediated antimicrobial effect is strain specific, and 10 out of 51 tested *L. reuteri* strains (19.6%) are not inhibited/outcompeted by the Pks-producing strain.

### ***L. reuteri* strains resistant to Pks encode an acyltransferase enzyme**

Next, we aimed to understand what the underlying mechanism is that allows select strains to be resistant to *L. reuteri* R2lc Pks. We performed comparative genome analyses to identify genes unique to strains that are resistant to *L. reuteri* R2lc Pks. We

included 24 genome sequences in our analyses, of which four genome sequences were derived from resistant strains (mlc3, Lr4000, 6475, and 20016<sup>T</sup>) (Table S1). Our initial genome comparison analyses revealed seven genes unique to three of the four R2lc-resistant strains (mlc3, 6475 and 20016<sup>T</sup>) (Table S2).

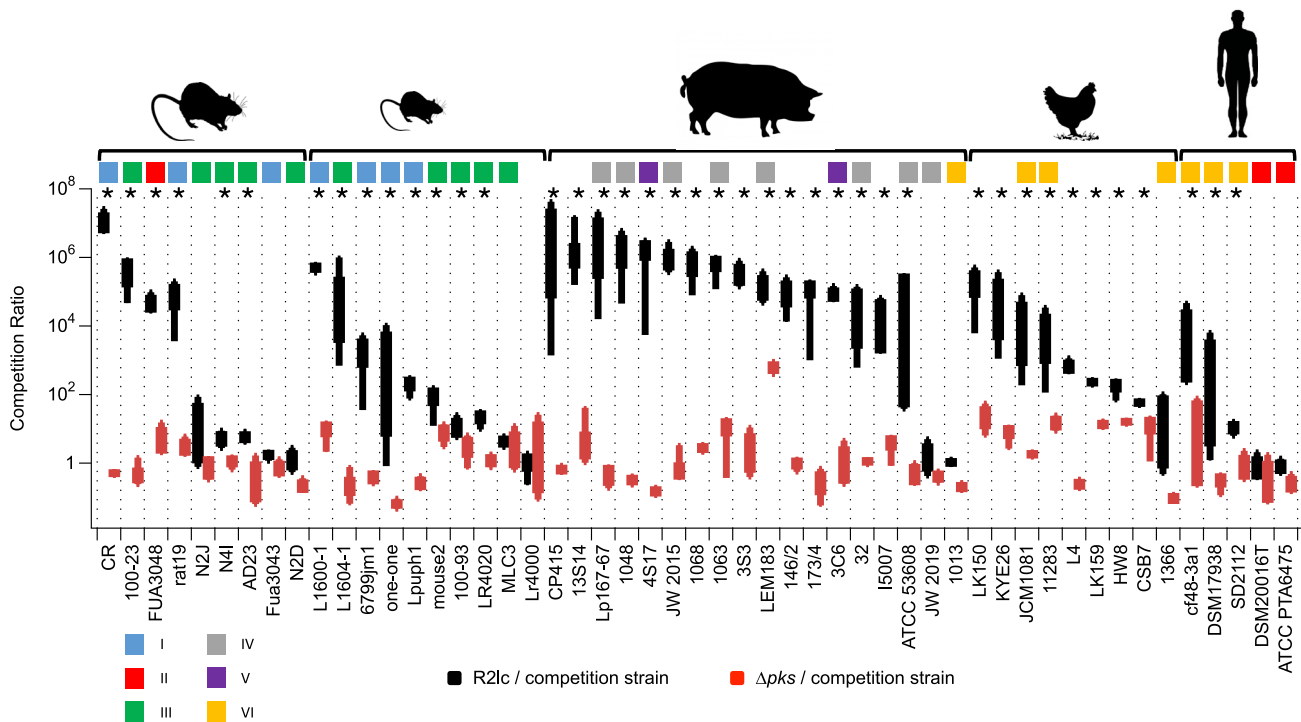
One of the seven unique genes (*act*, Lreu\_1368 in strain DSM20016<sup>T</sup>; Table S2) is annotated as an O-acyltransferase. This gene became our focus as several studies demonstrated that deletion of homologous *act* genes reduces the resistance to enzymes that target the peptidoglycan (PG) cell wall in other Gram-positive bacteria (reviewed in the study conducted by Ragland and Criss, 2017). Moreover, resistance to antimicrobial molecules is typically associated with altered cell-wall PG structures (Vollmer, 2008). In *L. reuteri*, the *act* gene is located in the surface polysaccharide (SPS) gene cluster. Based on the available genome sequences, we found that three resistant strains (mlc3, 6475, and 20016<sup>T</sup>) all putatively encode a nearly identical Act protein (≥99% amino acid identity). Three R2lc-Pks-sensitive strains (CR, ATCC 53608 and one-one) putatively encode a distinct Act protein with 54% amino acid identity to the predicted Act amino acid sequence of resistant *L. reuteri* strains. Six additional R2lc-Pks-sensitive strains (I5007, 6799jm-1, lpup, CF48-3A1, Lr4020, and SD2112) putatively encode Act with 26%–28% amino acid identity compared with the predicted Act amino acid sequence of resistant *L. reuteri* strains. The remainder of the 12 strains that are sensitive to R2lc-Pks do not contain the *act* gene in the SPS gene cluster (Figure 4).

To map which *L. reuteri* strains are resistant or sensitive to R2lc-Pks, we constructed a phylogenetic tree of Act amino acid sequences from 133 *L. reuteri* strains. We found that 44 out of 133 strains (33.1%) contain an *act* gene, whose putative product shares 99%–100% amino acid identity to the predicted amino acid sequence of resistant *L. reuteri* strains, while the remaining strains putatively encode Act with 23%–72% amino acid identity (Figure 5; also see Table S6).

### **The acyltransferase gene in *L. reuteri* confers protection to R2lc-Pks products**

To test if the *act* gene confers protection to R2lc-Pks products, we generated *act* mutants and complemented strains of mlc3 (rat isolate, clade I) and ATCC 6475 (human isolate, clade I). We





**Figure 3. In vitro competition ratio of *L. reuteri* R2lc and R2lcΔpks with a panel of 51 *L. reuteri* strains from different host origin**

Competition ratios between R2lc and the competitor strain (black) and R2lcΔpks and the competitor strain (red) after 24-h co-incubation in MRS (pH 4.0). Data shown are based on at least three biological replicates. The whiskers represent the maximum and minimal values, and the lower, middle, and upper line of the box represent first quartile, median, and third quartile, respectively. Host origin (top) and the *L. reuteri* phylogenetic lineage (color coding) are indicated. Statistical significance was determined by Wilcoxon/Kruskal-Wallis tests. Asterisks (\*) represents statistical significance between R2lc versus competitor strain for the top panel ( $p < 0.05$  considered as significant).

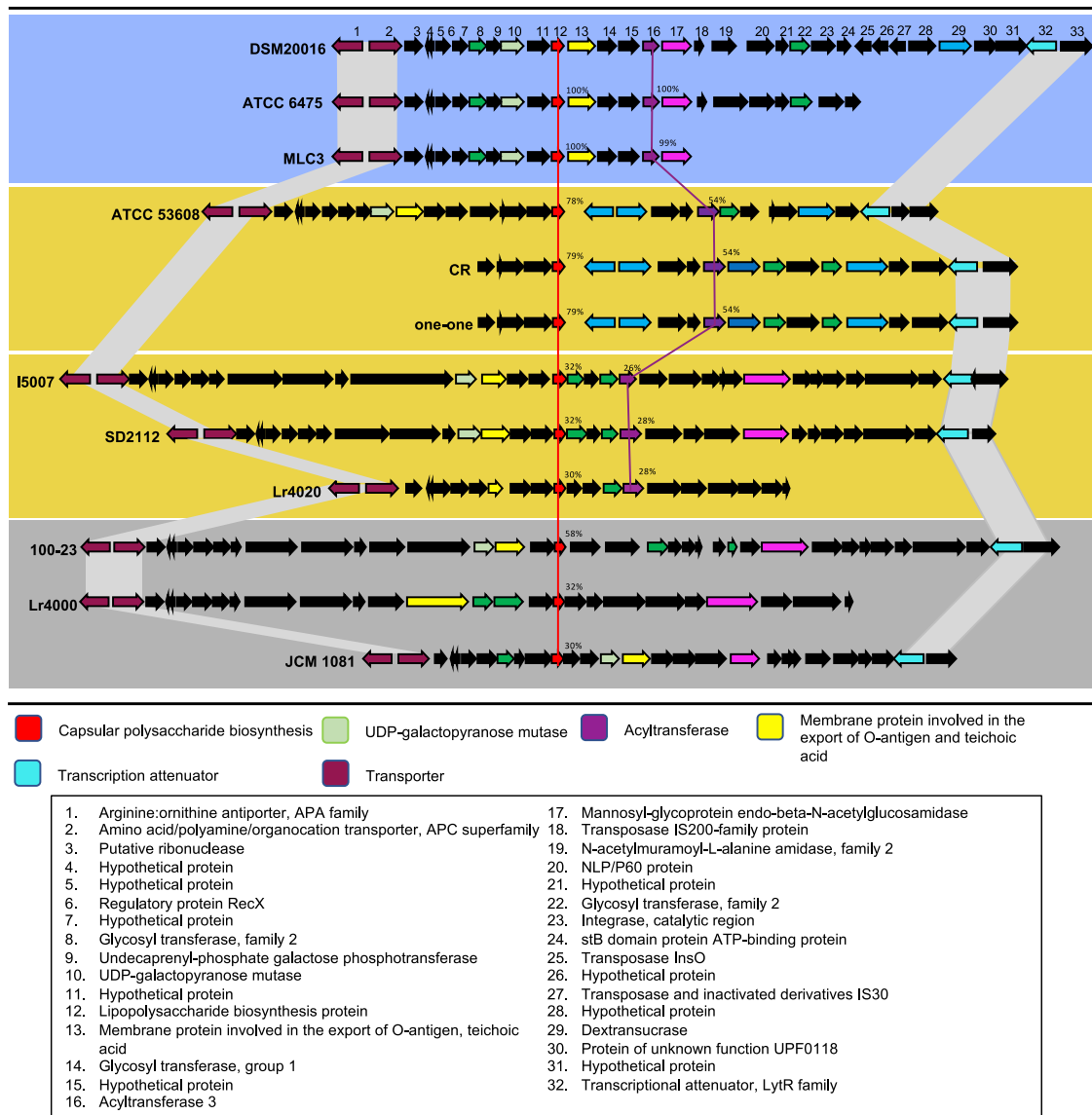
See also Table S3.

observed that strain 6475Δact but not mlc3Δact grows slower *in vitro* compared with the parent wild-type strains. Growth was partially restored when 6475Δact is complemented (with pNZ-act), while strain mlc3Δact (with pNZ-act) grew faster than wild type (Figure S5A). In these strains, we found that inactivation of act increased the sensitivity to R2lc-Pks, and act complementation decreased the sensitivity to R2lc-Pks, as is evident from the increased competition ratios between R2lc versus Δact compared with the competition ratios between R2lc versus wild-type and complemented strain (Figure 6A [left panel]). In contrast, deletion or complementation of act gene in mlc3 and 6475 did not change the competition ratio of these strains against R2lcΔpks (Figure 6A [right panel]). Overall, our data showed that Act in *L. reuteri* provides resistance to R2lc-Pks-mediated killing.

### ***L. reuteri* Act provides resistance against antimicrobial Pks molecules *in vivo***

To determine to what extent Act protects against R2lc Pks *in vivo*, we performed competition experiments in mice. Germ-free mice were administrated with a 1:1 mixture of any of the following strain combinations: R2lc ± pks and mlc3 ± act (Figures 6B and 6C). Following administration, fecal samples were analyzed at days 1, 3, and 6, and animals were sacrificed at day 7 after which we analyzed microbial counts in the stomach, jejunum, cecum, and colon. Fecal analyses revealed that the competition ratios between R2lc and mlc3 or its isogenic Δact mutant were

comparable ( $p > 0.05$ ); however, at day 7, the competition ratio of R2lc:mlc3Δact was significantly larger compared with R2lc:mlc3 (2,183- ± 3,060-fold versus 95- ± 58-fold, respectively;  $p < 0.01$ ) (Figure 6B [left panel]). We also observed that in all intestinal tissues the competition ratio of R2lc::mlc3Δact was larger compared with R2lc::mlc3. Specifically, forestomach (3,777- ± 2,259-fold versus 31- ± 48-fold;  $p < 0.01$ ), jejunum (9,510- ± 15,239-fold versus 62- ± 55-fold;  $p < 0.01$ ), cecum (9,872- ± 17,683-fold versus 115- ± 99-fold;  $p < 0.01$ ), and colon (959- ± 4,703-fold versus 118- ± 104-fold;  $p < 0.01$ ) (Figure 6B [right panel]). Thus, the act gene provides protection against R2lc-Pks *in vivo*. To test to what extent R2lc Pks provides R2lc with a competitive advantage in these experiments, we performed competition experiments with R2lcΔpks::mlc3 and R2lcΔpks::mlc3Δact (Figure 6C). Overall, the competition ratios of R2lcΔpks::mlc3 and R2lcΔpks::mlc3Δact are lower compared with the competition ratios observed with R2lc wild type, which demonstrates a clear role for Pks in providing R2lc with a competitive advantage *in vivo*. Interestingly, the R2lcΔpks::mlc3Δact competition ratio is higher than that of R2lcΔpks::mlc3 in the stomach (1.5- versus 0.5-fold,  $p = 0.02$ ), jejunum (2.2- versus 0.5-fold,  $p = 0.01$ ), and cecum (2.2- versus 1.2-fold,  $p = 0.04$ ) (Figure 6C [right panel]), which could be linked to the role of Act in lysozyme resistance during *in vivo* colonization (Bera et al., 2005). Indeed, we tested the lysozyme susceptibility of wild-type and act mutant strains and identified that the



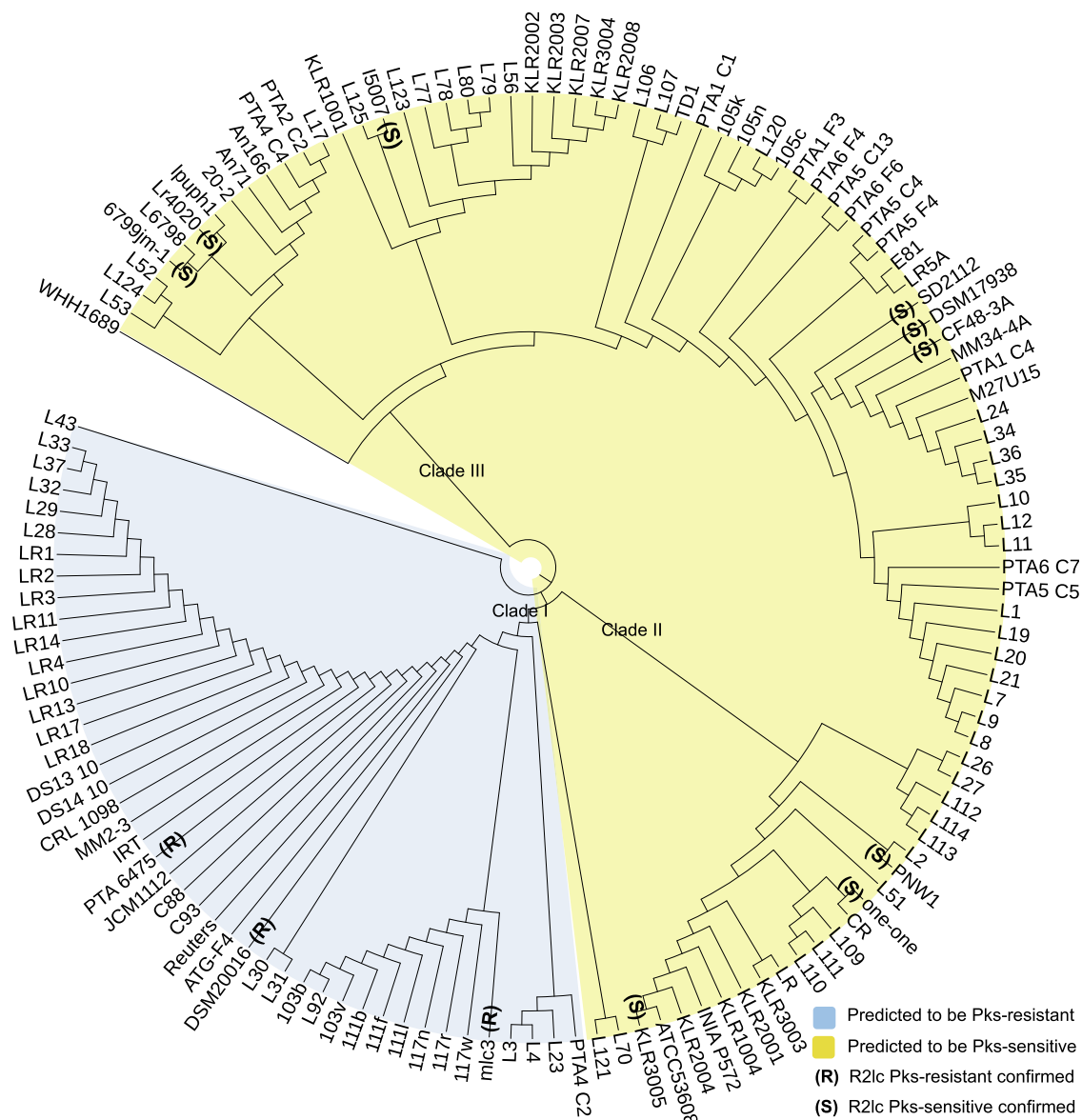
**Figure 4. Variability in gene content of surface polysaccharide gene cluster in *L. reuteri***

Comparison of surface polysaccharide (SPS) gene clusters of strains resistant and sensitive to R2lc-Pks. Strains #1–3 (resistant) each putatively encode a nearly identical Act protein with  $\geq 99\%$  amino acid identity; strains #4–6 (sensitive) putatively encode Act that shares 54% amino acid identity to Act of resistant strains; strains #7–9 (sensitive) putatively encode Act that shares 25%–28% amino acid identity to Act of resistant strains; strains #10–12 (sensitive) lack the *act* gene. Genes are color-coded with their predicted functions based on the annotation of the SPS gene cluster in *L. reuteri* DSM20016<sup>T</sup>. See also [Tables S1](#) and [S2](#).

$\Delta act$  variants are more susceptible to lysozyme while the complemented strains survived at levels comparable to that of the wild-type strains (Figure S5B). Therefore, host lysozyme may also suppress intestinal survival of *mlc3* $\Delta act$  thereby providing R2lc $\Delta pks$  a competitive advantage. When we tested the susceptibility of the *act* mutants to ampicillin, we determined that the *act* mutants of 6475 (Figure S5C) and *mlc3* (Figure S5D) are more sensitive to ampicillin, while the phenotype of complemented strains was similar to the wild-type strain. Because Act provides protection to lysozyme and ampicillin, which both attack the PG (Teethaisong et al., 2014; Vanderkelen et al., 2011), we aimed to understand how Act modifies the PG complex.

### The acyltransferase gene increases acetylation of the cell wall

The bacterial Act enzyme acetylates the C6 hydroxyl of *N*-acetylmuramic acid in PG (Moynihan and Clarke, 2010). To understand the role of *L. reuteri* Act in acetylation, we performed HPLC analyses to determine acetylation levels of the cell wall in Pks-resistant and -sensitive strains, relative to total cellular muramic acid (MurN) content. Analysis of cell-wall extracts derived from *L. reuteri* 100-23, a Pks-sensitive strain which does not encode Act, revealed that  $6.65\% \pm 1.19\%$  was acetylated relative to total MurN. Next, we cloned the *act* gene from strain *mlc3* in the inducible expression vector pSIP411, which



**Figure 5. Phylogenetic tree of *L. reuteri* Act homologs**

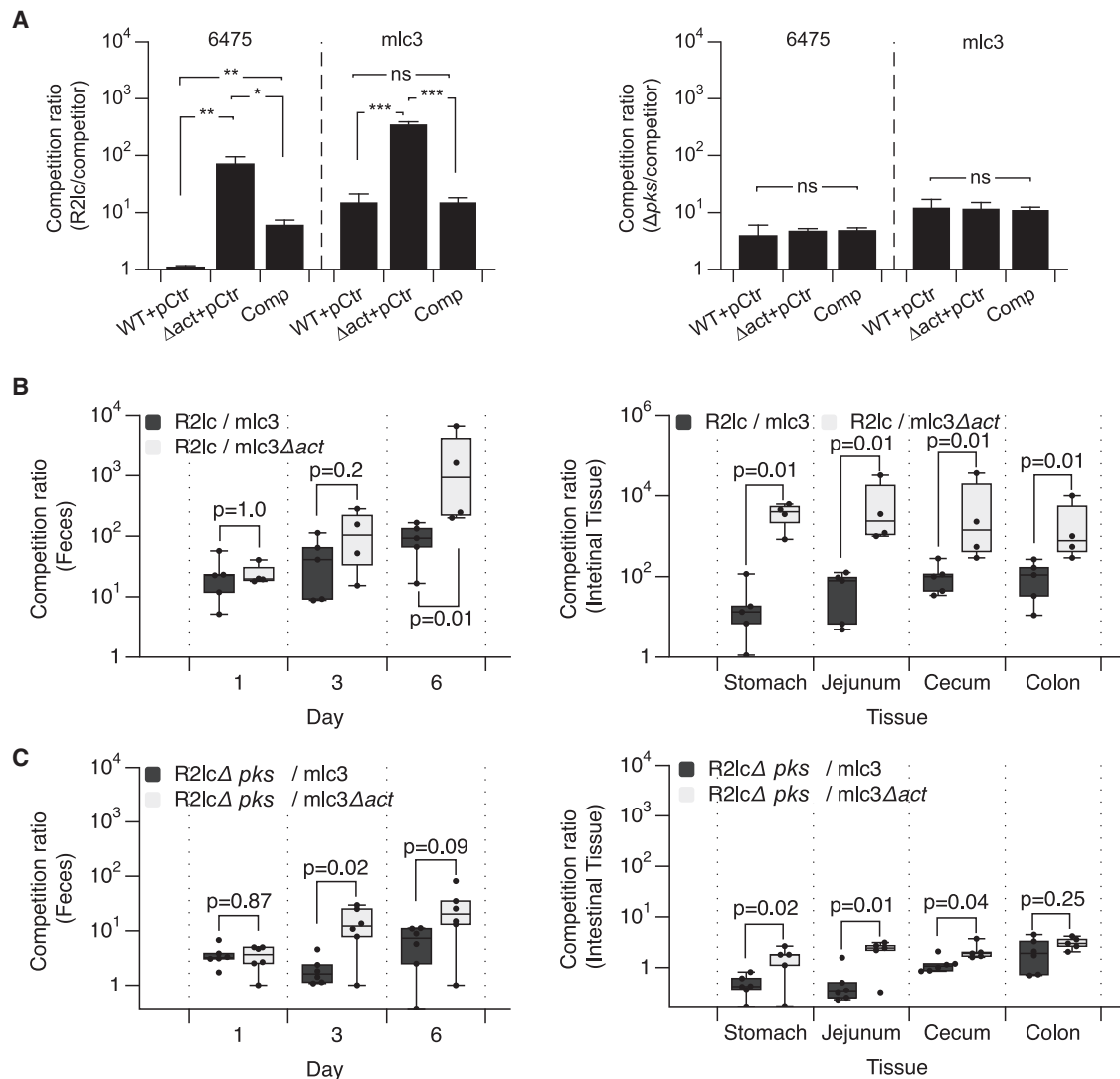
We constructed a phylogenetic tree based on Act amino acid sequences derived from 133 *L. reuteri* strains to predict resistance and sensitivity against Pks. Forty-three out of 133 strains (33.1%) putatively encode Act that share 99%–100% amino acid identity with Act encoded by the ATCC PTA 6475 strain, which therefore are predicted to be R2lc resistant (blue ring). The remaining strains putatively encode Act that share 23%–54% amino acid identity with Act from ATCC PTA 6475 (yellow ring), which are thus predicted to be sensitive to Pks-mediated killing. See also [Table S6](#).

was established in strain 100-23. Induced expression of *act* in 100-23 increased relative acetylation levels to  $28.7\% \pm 9.0\%$ . Inactivation of *act* in *L. reuteri* strains resistant to R2lc-Pks reduced total acetylation levels (from  $70.1\% \pm 4.9\%$  to  $2.3\% \pm 0.3\%$  for *mlc3*; and from  $61.2\% \pm 9.1\%$  to  $21.3\% \pm 12.9\%$  for 6475). Overexpression of the *act* gene in *mlc3Δact* and *6475Δact* restored the relative acetylation levels (from  $2.3\% \pm 0.3\%$  to  $51.8\% \pm 15.1\%$  for *mlc3Δact::act* and from  $21.3\% \pm 12.9\%$  to  $50.9 \pm 9.2\%$  for *6475Δact::act*) ([Table 1](#)). Together, these data suggest that *L. reuteri* Act is responsible for increased acetylation of the cell wall, which we demon-

strated is linked to the resistance to the antimicrobial compound produced by R2lc.

## DISCUSSION

In this study, we provided mechanistic insight into intraspecies antagonism based on a secondary metabolite in the gut symbiont *L. reuteri*. We discovered that a BGC provides a competitive advantage in the gastrointestinal tract by killing closely related microbes in a strain-specific manner. Expression of the *act* gene by



**Figure 6. The *act* acyltransferase gene protects against R2lc-Pks molecules**

(A) *Act* provides resistance to R2lc-mediated killing (left panel), which is mediated by the inhibitory activity of Pks (right panel). Statistical significance was determined by an unpaired two-sample t test; ns: not statistically significant; \* $p < 0.05$ ; \*\* $p < 0.01$ ; \*\*\* $p < 0.001$ . Data shown are means  $\pm$  SD and are based on three biological replicates.

(B and C) Competition ratios of the indicated strains in previous germ-free mice in fecal (left panel) and intestinal contents (right panels). Data are presented as box and whisker plots; the whiskers represent the maximum and minimal values, and the lower, middle, and upper line of the box represent first quartile, median, and third quartile, respectively. Points represent individual data points. Statistical significance was determined by Wilcoxon/Kruskal-Wallis tests;  $p < 0.05$  is considered statistically significant.

See also Figure S5.

select strains of *L. reuteri* increased resistance against this killing activity.

Closely related strains that occupy the same niche are subject to fierce competition (Hibbing et al., 2010; Segura Munoz et al., 2020). While the co-existence of two closely related strains may be stable in the host, long-term evolution may lead to different ecological outcomes (Edwards et al., 2018). Either evolution leads to changes that form a more stable population—lineages are overall less competitive—or evolution results in increased fitness of one lineage. The lineage with increased fitness will replace the competing lineage, or the competing lineage may

evolve in a way that will allow it to persist (Le Gac et al., 2012). Our findings are interesting in light of these ecological theories. Specifically, four distinct lineages have thus far been identified among rodent *L. reuteri* isolates (Frese et al., 2011). Our competition analyses revealed that nearly all strains in lineage I are sensitive to R2lc-Pks products while most strains in lineage III are resistant. One potential explanation for the latter is the broad distribution of nearly identical *act* genes in *L. reuteri* strains from different host origin (Figure 5 [blue ring]), which suggests *act* exerts an evolutionary pressure that will increase the fitness in the gut ecosystem. The findings presented in this work, the

**Table 1. O-acetylation levels were determined by base-catalyzed hydrolysis and release of acetate**

Strain	% O-acetylation <sup>a</sup>
100-23	6.65 ± 1.19
100-23 + pSIP control	3.46 ± 0.07
100-23::act	28.70 ± 9.01
mlc3	70.12 ± 4.85
mlc3Δact + pSIP control	2.31 ± 0.29
mlc3Δact::act	51.76 ± 15.09
6475	61.21 ± 9.07
6475Δact + pSIP control	21.29 ± 12.92
6475Δact::act	50.90 ± 9.18

<sup>a</sup>Percent O-acetylation is reported relative to muramic acid (MurN) content. Results are from one representative biological replicate measured in triplicate and reported as mean with standard deviation.

observation that aryl polyene gene clusters are widely distributed throughout the host-associated bacteria (Cimermanic et al., 2014) and that *L. reuteri* 6475Δact has reduced gastrointestinal survival (preliminary data) support the importance of Act in gut fitness and make it collectively less likely that act is acquired through a neutral process such as genetic drift.

The evolution of a vertebrate symbiont with its host might be reciprocal, resulting in co-evolution. The beneficial traits that a microbe exerts on its host may have been shaped by natural selection as they promote host fitness, which is critical for the microbe to thrive in its niche. R2lc-Pks molecules activates the AhR, a ligand activated transcription factor (Özçam et al., 2019). Activation of AhR has been shown to induce production of interleukin-22 (IL-22) (Veldhoen et al., 2008), which enhances the innate immune response by inducing antimicrobial peptides (i.e., Reg3-lectins) production from the mucosal layer (Vaishnav et al., 2011; Zheng et al., 2008). It is intriguing to speculate that Pks molecules provide R2lc with a host-mediated competitive advantage as Pks-mediated AhR activation leads to antimicrobial peptide production by the host. Collectively, this would support the co-evolution between select microbes and their host.

This work contributes to our understanding of the ecological role of a gut-symbiont-encoded secondary metabolite and provides insight into how closely related strains developed resistance against these antimicrobial molecules by acetylation of the cell-wall polysaccharide complex. It is plausible that bacteria have evolved other mechanisms to survive exposure to Pks. In this work, we did encounter one strain—the rodent isolate Lr4000—that does not encode Act but was resistant to R2lc Pks molecules during the batch culture competition experiments and the mechanism of resistance remains to be elucidated. Other questions that remain are how the antimicrobial compound enters the target cell, and whether the protective effect of cell-wall acetylation is direct or indirect.

With a number of genome editing tools available for *L. reuteri*, we are in a position to use genetic approaches to study microbe-microbe interactions in a gut symbiont. When these experiments are placed in the right ecological context, mechanistic insight can be provided on the formation and stability of microbial communities, which is expected to provide insight how microbial diversity is maintained within complex ecosystems. This knowl-

edge can be leveraged to provide rational approaches to select probiotics and next-generation probiotics to ultimately promote animal and human health.

## STAR★METHODS

Detailed methods are provided in the online version of this paper and include the following:

- KEY RESOURCES TABLE
- RESOURCE AVAILABILITY
  - Lead contact
  - Materials availability
  - Data and code availability
- EXPERIMENTAL MODEL AND SUBJECT DETAILS
  - Microbial strains and growth conditions
  - Mice
- METHOD DETAILS
  - Reagents and enzymes
  - Construction of *L. reuteri* mutant strains
  - Construction of *L. reuteri* mutants by homologous recombination
  - Inactivation of *L. reuteri* 6475 acyltransferase by recombineering
  - Construction of Δact mutants, pSIP controls, and complemented strains
  - Generating rifampicin resistant *L. reuteri* strains
  - Whole genome sequencing
  - Comparative genome and bioinformatic analyses
  - *In vitro* competition assay with *L. reuteri* strains
  - *In vitro* biofilm assay
  - Split-well (filter separated) competition experiment
  - Sample preparation for double-layer agar antimicrobial assay
  - Double-layer agar antimicrobial assay
  - Construction of leptin producing 100-23 strain and leptin release experiment
  - *In vivo* competition experiment
  - Ampicillin resistance experiment
  - Determination of peptidoglycan O'-acylation by HPLC
  - LC/MS sample preparation
  - UHPLC/HRESI-qTOF-MS analysis of extracts
- QUANTIFICATION AND STATISTICAL ANALYSIS

## SUPPLEMENTAL INFORMATION

Supplemental information can be found online at <https://doi.org/10.1016/j.chom.2022.03.033>.

## ACKNOWLEDGMENTS

We thank Siv Ahrné (Lund University, Sweden) for providing *L. reuteri* R2lc, N2J, N2D, and N4I; BioGaia AB (Stockholm, Sweden) for providing *L. reuteri* strains ATCC PTA 6475; and Joseph Skarlupka for technical assistance. We are grateful to the College of Agricultural Life Sciences (CALS) Statistical Consulting Lab for their assistance in the statistical analysis and the University of Wisconsin Biotechnology Center DNA Sequencing Facility for their services. We thank O'Reilly Science Art for assistance with preparing the graphical abstract. This work was supported by startup funds from the University of Wisconsin-Madison to J.-P.v.P., the UW-Madison Food Research Institute, and the United States Department of Agriculture, National Institute of Food and

Agriculture (USDA NIFA) Hatch award MSN185615 and grant no. 2018-6717-27523. M.Ö. received financial support from the Turkish Ministry of National Education and from the UW-Madison Department of Food Science. M.Ö. and S.Z. were the recipients of the Robert H. and Carol L. Deibel Distinguished Graduate Fellowship in probiotic research, which was awarded by the UW-Madison Food Research Institute. J.C. is supported by National Institutes of Health grant R01 AI153173. Gnotobiotic work was partly supported by the Office of the Vice-Chancellor for Research and Graduate Education at the University of Wisconsin-Madison, with funding from the Wisconsin Alumni Research Foundation.

#### AUTHOR CONTRIBUTIONS

Conceptualization, M.Ö. and J.-P.V.P.; methodology, M.Ö., J.-H.O., R.T., D.A., E.V., F.E.R., and J.-P.V.P.; formal analysis, M.Ö., J.-H.O., R.T., D.A., S.Z., and T.J.A.; investigation, M.Ö., J.-H.O., R.T., S.Z., T.J.A., M.H., F.L., and J.C.; writing – original draft, M.Ö., J.W., and J.-P.V.P.; writing – review & editing, M.Ö. and J.-P.V.P.; visualization, M.Ö., J.-H.O., and S.Z.; validation, R.T., D.A., T.J.A., M.H., S.R.-R., and C.C.C.; resources, F.E.R. T.B., and J.W.; supervision, T.B., J.W., J.-P.V.P.; project administration, J.-P.V.P.; funding acquisition, J.-P.V.P.

#### DECLARATION OF INTERESTS

J.-P.V.P. received unrestricted funds from BioGaia AB, a probiotic-producing company. J.-P.V.P. is the founder of the consulting company Next-Gen Probiotics. J.W. has received grants and honoraria from several food and ingredient companies, including companies that produce probiotics. J.W. is a co-owner of Synbiotic Solutions, and is on the Scientific Advisory Board of Alimentary Health. M.Ö. was an employee of DuPont Nutrition and Biosciences. J.C. is a Scientific Advisor for Seed Health, Inc.

Received: June 11, 2021

Revised: December 16, 2021

Accepted: March 25, 2022

Published: April 19, 2022

#### REFERENCES

Aleti, G., Baker, J.L., Tang, X., Alvarez, R., Dinis, M., Tran, N.C., Melnik, A.V., Zhong, C., Ernst, M., Dorrestein, P.C., et al. (2019). Identification of the bacterial biosynthetic gene clusters of the oral microbiome illuminates the unexplored social language of bacteria during health and disease. *mBio* 10, e00321–e00319.

Alexander, L.M., Oh, J.-H., Stapleton, D.S., Schueler, K.L., Keller, M.P., Attie, A.D., and Pijkeren, J.-P. van. (2019). Exploiting prophage-mediated lysis for biotherapeutic release by *Lactobacillus reuteri*. *Appl. Environ. Microbiol.* 85, e02335–e02318.

Bera, A., Herbert, S., Jakob, A., Vollmer, W., and Götz, F. (2005). Why are pathogenic staphylococci so lysozyme resistant? The peptidoglycan O-acetyltransferase OatA is the major determinant for lysozyme resistance of *Staphylococcus aureus*. *Mol. Microbiol.* 55, 778–787.

Bonder, M.J., Kurilshikov, A., Tigchelaar, E.F., Mujagic, Z., Imhann, F., Vila, A.V., Deelen, P., Vatanen, T., Schirmer, M., Smeekens, S.P., et al. (2016). The effect of host genetics on the gut microbiome. *Nat. Genet.* 48, 1407–1412.

Boon, E., Meehan, C.J., Whidden, C., Wong, D.H.-J., Langille, M.G.I., and Beiko, R.G. (2014). Interactions in the microbiome: communities of organisms and communities of genes. *FEMS Microbiol. Rev.* 38, 90–118.

Cha, R.S., Zarbl, H., Keohavong, P., and Thilly, W.G. (1992). Mismatch amplification mutation assay (MAMA): application to the c-H-ras gene. *Genome Res.* 2, 14–20.

Cimermancic, P., Medema, M.H., Claesen, J., Kurita, K., Wieland Brown, L.C., Mavrommatis, K., Pati, A., Godfrey, P.A., Koehrsen, M., Clardy, J., et al. (2014). Insights into secondary metabolism from a global analysis of prokaryotic biosynthetic gene clusters. *Cell* 158, 412–421.

David, L.A., Maurice, C.F., Carmody, R.N., Gootenberg, D.B., Button, J.E., Wolfe, B.E., Ling, A.V., Devlin, A.S., Varma, Y., Fischbach, M.A., et al.

(2014). Diet rapidly and reproducibly alters the human gut microbiome. *Nature* 505, 559–563.

Donia, M.S., Cimermancic, P., Schulze, C.J., Wieland Brown, L.C., Martin, J., Mitreva, M., Clardy, J., Lington, R.G., and Fischbach, M.A. (2014). A systematic analysis of biosynthetic gene clusters in the human microbiome reveals a common family of antibiotics. *Cell* 158, 1402–1414.

Duar, R.M., Frese, S.A., Lin, X.B., Fernando, S.C., Burkey, T.E., Tasseva, G., Peterson, D.A., Blom, J., Wenzel, C.Q., Szymanski, C.M., and Walter, J. (2017). Experimental evaluation of host adaptation of *Lactobacillus reuteri* to different vertebrate species. *Appl. Environ. Microbiol.* 83, e00132–e00117.

Edgar, R.C. (2004). MUSCLE: multiple sequence alignment with high accuracy and high throughput. *Nucleic Acids Res.* 32, 1792–1797.

Edwards, K.F., Kremer, C.T., Miller, E.T., Osmond, M.M., Litchman, E., and Klausmeier, C.A. (2018). Evolutionarily stable communities: a framework for understanding the role of trait evolution in the maintenance of diversity. *Ecol. Lett.* 21, 1853–1868.

Frese, S.A., Benson, A.K., Tannock, G.W., Loach, D.M., Kim, J., Zhang, M., Oh, P.L., Heng, N.C.K., Patil, P.B., Juge, N., et al. (2011). The evolution of host specialization in the vertebrate gut symbiont *Lactobacillus reuteri*. *PLoS Genet.* 7, e1001314.

Frese, S.A., MacKenzie, D.A., Peterson, D.A., Schmaltz, R., Fangman, T., Zhou, Y., Zhang, C., Benson, A.K., Cody, L.A., Mulholland, F., et al. (2013). Molecular characterization of host-specific biofilm formation in a vertebrate gut symbiont. *PLoS Genet.* 9, e1004057.

Gruber, G., and Steglich, W. (2007). Calostomal, a polyene pigment from the gasteromycete *Colostoma cinnabarinum* (Boletales). *Z. Naturforsch. B* 62, 129–131.

Ha, R., Fridrich, E., Sychantha, D., Biboy, J., Taveirme, M.E., Johnson, J.G., DiRita, V.J., Vollmer, W., Clarke, A.J., and Gaynor, E.C. (2016). Accumulation of peptidoglycan O-Acetylation leads to altered cell wall biochemistry and negatively impacts pathogenesis factors of *Campylobacter jejuni*. *J. Biol. Chem.* 291, 22686–22702.

Herbrík, A., Corretto, E., Chronáková, A., Langhansová, H., Petrásková, P., Hrdý, J., Čihák, M., Kříšťůfek, V., Bobek, J., Petříček, M., and Petříčková, K. (2020). A human lung-associated *Streptomyces* sp. TR1341 produces various secondary metabolites responsible for virulence, cytotoxicity and modulation of immune response. *Front. Microbiol.* 10, 3028.

Hibbing, M.E., Fuqua, C., Parsek, M.R., and Peterson, S.B. (2010). Bacterial competition: surviving and thriving in the microbial jungle. *Nat. Rev. Microbiol.* 8, 15–25.

Hiergeist, A., Gläsner, J., Reischl, U., and Gessner, A. (2015). Analyses of intestinal microbiota: culture versus sequencing. *ILAR J.* 56, 228–240.

Hooper, L.V., Littman, D.R., and Macpherson, A.J. (2015). Interactions between the microbiota and the immune system. *Science* 336, 1268–1273.

Hou, Y., Braun, D.R., Michel, C.R., Klassen, J.L., Adnani, N., Wyche, T.P., and Bugni, T.S. (2012). Microbial strain prioritization using metabolomics tools for the discovery of natural products. *Anal. Chem.* 84, 4277–4283.

Jacobson, A., Lam, L., Rajendram, M., Tamburini, F., Honeycutt, J., Pham, T., Van Treuren, W., Pruss, K., Stabler, S.R., Lugo, K., et al. (2018). A gut commensal-produced metabolite mediates colonization resistance to *Salmonella* infection. *Cell Host Microbe* 24, 296–307.e7.

De Kok, S., Stanton, L.H., Slaby, T., Durot, M., Holmes, V.F., Patel, K.G., Platt, D., Shapland, E.B., Serber, Z., Dean, J., et al. (2014). Rapid and reliable DNA assembly via ligase cycling reaction. *ACS Synth. Biol.* 3, 97–106.

Le Gac, M., Plucain, J., Hindré, T., Lenski, R.E., and Schneider, D. (2012). Ecological and evolutionary dynamics of coexisting lineages during a long-term experiment with *Escherichia coli*. *Proc. Natl. Acad. Sci. USA* 109, 9487–9492.

Lee, A.J., Cadelis, M.M., Kim, S.H., Swift, S., Copp, B.R., and Villas-Boas, S.G. (2020). Epipyron A, a broad-spectrum antifungal compound produced by *Epicoccum nigrum* ICMP 19927. *Molecules* 25, 5997.

Li, J., Sang, M., Jiang, Y., Wei, J., Shen, Y., Huang, Q., Li, Y., and Ni, J. (2021). Polyene-producing *Streptomyces* spp. From the fungus-growing termite macrotomes barneyi exhibit high inhibitory activity against the antagonistic fungus *Xylaria*. *Front. Microbiol.* 12, 649962.

- Lin, X.B., Lohans, C.T., Duar, R., Zheng, J., Vederas, J.C., Walter, J., and Gänzle, M. (2015). Genetic determinants of reutericyclin biosynthesis in *Lactobacillus reuteri*. *Appl. Environ. Microbiol.* *81*, 2032–2041.
- Lin, X.B., Wang, T., Stothard, P., Corander, J., Wang, J., Baines, J.F., Knowles, S.C.L., Baltrūnaitė, L., Tasseva, G., Schmaltz, R., et al. (2018). The evolution of ecological facilitation within mixed-species biofilms in the mouse gastrointestinal tract. *ISME J.* *12*, 2770–2784.
- Martínez, I., Maldonado-Gomez, M.X., Gomes-Neto, J.C., Kittana, H., Ding, H., Schmaltz, R., Joglekar, P., Cardona, R.J., Marsteller, N.L., Kembel, S.W., et al. (2018). Experimental evaluation of the importance of colonization history in early-life gut microbiota assembly. *Elife* *7*, e36521.
- Medema, M.H., Blin, K., Cimermancic, P., de Jager, V., Zakrzewski, P., Fischbach, M.A., Weber, T., Takano, E., and Breitling, R. (2011). antiSMASH: rapid identification, annotation and analysis of secondary metabolite biosynthesis gene clusters in bacterial and fungal genome sequences. *Nucleic Acids Res.* *39*, W339–W346.
- Medema, M.H., Cimermancic, P., Sali, A., Takano, E., and Fischbach, M.A. (2014). A systematic computational analysis of biosynthetic gene cluster evolution: lessons for engineering biosynthesis. *PLoS Comput. Biol.* *10*, e1004016.
- Moynihan, P.J., and Clarke, A.J. (2010). O-acetylation of peptidoglycan in gram-negative bacteria: identification and characterization of peptidoglycan O-acetyltransferase in *Neisseria gonorrhoeae*. *J. Biol. Chem.* *285*, 13264–13273.
- Murray, I.A., and Shaw, W.V. (1997). O-Acetyltransferases for chloramphenicol and other natural products. *Antimicrob. Agents Chemother.* *41*, 1–6.
- Oh, J.-H., Lin, X.B., Zhang, S., Tollenaar, S.L., Özçam, M., Dunphy, C., Walter, J.E., and van Pijkeren, J.-P. (2019). Prophages in *Lactobacillus reuteri* are associated with fitness trade-offs but can increase competitiveness in the gut ecosystem. *Appl. Environ. Microbiol.* *86*, e01922–e01919.
- Oh, J.H., and Van Pijkeren, J.P. (2014). CRISPR-Cas9-assisted recombineering in *Lactobacillus reuteri*. *Nucleic Acids Res.* *42*, e131.
- Oh, P.L., Benson, A.K., Peterson, D.A., Patil, P.B., Moriyama, E.N., Roos, S., and Walter, J. (2010). Diversification of the gut symbiont *Lactobacillus reuteri* as a result of host-driven evolution. *ISME J.* *4*, 377–387.
- Özçam, M., Tocomo, R., Oh, J.H., Afrazi, A., Mezrich, J.D., Roos, S., Claesen, J., and van Pijkeren, J.P. (2019). Gut symbionts *Lactobacillus reuteri* R2lc and 2010 encode a polyketide synthase cluster that activates the mammalian aryl hydrocarbon receptor. *Appl. Environ. Microbiol.* *85*, e01661–e01618.
- Özçam, M., and van Pijkeren, J.-P. (2019). Draft genome sequence of aryl hydrocarbon receptor activator strains *Lactobacillus reuteri* R2lc and 2010. *Microbiol. Resour. Annot.* *8*, e00067–e00019.
- Ragland, S.A., and Criss, A.K. (2017). From bacterial killing to immune modulation: recent insights into the functions of lysozyme. *PLoS Pathog.* *13*, e1006512.
- Sambrook, J., and Russell, D.W. (2006). Transformation of *E. coli* by electroporation. *CSH Protoc.* *2006*, pdb.prot3933.
- Sassone-Corsi, M., Nuccio, S.-P., Liu, H., Hernandez, D., Vu, C.T., Takahashi, A.A., Edwards, R.A., and Raffatellu, M. (2016). Microcins mediate competition among *Enterobacteriaceae* in the inflamed gut. *Nature* *540*, 280–283.
- Savage, D.C., Dubos, R., and Schaedler, R.W. (1968). The gastrointestinal epithelium and its autochthonous bacterial flora. *J. Exp. Med.* *127*, 67–76.
- Segura Munoz, R.R., Mantz, S., Schmaltz, R.J., Walter, J., and Ramer-Tait, A.E. (2020). Experimental evaluation of ecological principles to understand and modulate the outcome of bacterial strain competition in gut microbiomes. <https://doi.org/10.1038/s41396-022-01208-9>.
- Sender, R., Fuchs, S., and Milo, R. (2016). Revised estimates for the number of human and bacteria cells in the body. *PLoS Biol.* *14*, e1002533.
- Sgobba, E., Blöbaum, L., and Wendisch, V.F. (2018). Production of food and feed additives from non-food-competing feedstocks: valorizing N-acetylmuramic acid for amino acid and carotenoid fermentation with *Corynebacterium glutamicum*. *Front. Microbiol.* *9*, 2046.
- Snijders, A.M., Langley, S.A., Kim, Y.-M., Brislawn, C.J., Noecker, C., Zink, E.M., Fansler, S.J., Casey, C.P., Miller, D.R., Huang, Y., et al. (2016). Influence of early life exposure, host genetics and diet on the mouse gut microbiome and metabolome. *Nat. Microbiol.* *2*, 16221.
- Stecher, G., Tamura, K., and Kumar, S. (2020). Molecular Evolutionary Genetics Analysis (MEGA) for macOS. *Molecular Biology and Evolution* *37*, 1237–1239.
- Teethaisong, Y., Autarkool, N., Sirichaiwetchakoon, K., Krubphachaya, P., Kupittayanant, S., and Eumkeb, G. (2014). Synergistic activity and mechanism of action of *Stephania suberosa* Forman extract and ampicillin combination against ampicillin-resistant *Staphylococcus aureus*. *J. Biomed. Sci.* *21*, 90.
- Tumbaugh, P.J., Ridaura, V.K., Faith, J.J., Rey, F.E., Knight, R., and Gordon, J.I. (2009). The effect of diet on the human gut microbiome: a metagenomic analysis in humanized gnotobiotic mice. *Sci. Transl. Med.* *1*, 6ra14.
- Vaishnav, S., Yamamoto, M., Severson, K.M., Ruhn, K.A., Yu, X., Koren, O., Ley, R., Wakeland, E.K., and Hooper, L.V. (2011). The antibacterial lectin RegIII $\gamma$  promotes the spatial segregation of microbiota and host in the intestine. *Science* *334*, 255–258.
- Van Pijkeren, J.P., and Britton, R.A. (2012). High efficiency recombineering in lactic acid bacteria. *Nucleic Acids Res.* *40*, e76.
- Van Pijkeren, J.P., Neoh, K.M., Sirias, D., Findley, A.S., and Britton, R.A. (2012). Exploring optimization parameters to increase ssDNA recombineering in *Lactococcus lactis* and *Lactobacillus reuteri*. *Bioengineered* *3*, 209–217.
- Vanderkelen, L., Van Herreweghe, J.M., Vanoirbeek, K.G.A., Baggerman, G., Myrnes, B., Declerck, P.J., Nilsen, I.W., Michiels, C.W., and Callewaert, L. (2011). Identification of a bacterial inhibitor against g-type lysozyme. *Cell. Mol. Life Sci.* *68*, 1053–1064.
- Veldhoen, M., Hirota, K., Westendorf, A.M., Buer, J., Dumoutier, L., Renaud, J.-C., and Stockinger, B. (2008). The aryl hydrocarbon receptor links TH17-cell-mediated autoimmunity to environmental toxins. *Nature* *453*, 106–109.
- Vollmer, W. (2008). Structural variation in the glycan strands of bacterial peptidoglycan. *FEMS Microbiol. Rev.* *32*, 287–306.
- Walter, J., Britton, R.A., and Roos, S. (2011). Host-microbial symbiosis in the vertebrate gastrointestinal tract and the *Lactobacillus reuteri* paradigm. *Proc. Natl. Acad. Sci. USA* *108*, 4645–4652.
- Youngblut, N.D., De La Cuesta-Zuluaga, J., Reischer, G.H., Dauser, S., Schuster, N., Walzer, C., Stalder, G., Farnleitner, A.H., and Ley, R.E. (2020). Large-scale metagenome assembly reveals novel animal-associated microbial genomes, biosynthetic gene clusters, and other genetic diversity. *mSystems* *5*, e01045–e01020.
- Zarrinpar, A., Chaix, A., Yooseph, S., and Panda, S. (2014). Diet and feeding pattern affect the diurnal dynamics of the gut microbiome. *Cell Metab.* *20*, 1006–1017.
- Zelante, T., Iannitti, R.G., Cunha, C., De Luca, A., Giovannini, G., Pieraccini, G., Zecchi, R., D'Angelo, C., Massi-Benedetti, C., Fallarino, F., et al. (2013). Tryptophan catabolites from microbiota engage aryl hydrocarbon receptor and balance mucosal reactivity via interleukin-22. *Immunity* *39*, 372–385.
- Zhang, S., Oh, J.-H., Alexander, L.M., Özçam, M., and Van Pijkeren, J.-P. (2018). D-Ala-D-Ala ligase as a broad host-range counterselection marker in vancomycin-resistant lactic acid bacteria. *J. Bacteriol.* *200*, 00607–00617.
- Zhang, S., Özçam, M., and van Pijkeren, J.-P. (2020). Draft genome sequences of 12 *Lactobacillus reuteri* Strains of rodent origin. *Microbiol. Resour. Annot.* *9*, e00004–e00020.
- Zhao, W.T., Shi, X., Xian, P.J., Feng, Z., Yang, J., and Yang, X.L. (2021). A new fusicoccane diterpene and a new polyene from the plant endophytic fungus *Talaromyces pinophilus* and their antimicrobial activities. *Nat. Prod. Res.* *35*, 124–130.
- Zheng, J., Wittouck, S., Salvetti, E., Franz, C.M.A.P., Harris, H.M.B., Mattarelli, P., O'Toole, P.W., Pot, B., Vandamme, P., Walter, J., et al. (2020). A taxonomic note on the genus *Lactobacillus*: description of 23 novel genera, emended description of the genus *Lactobacillus beijerinckii* 1901, and union of *Lactobacillaceae* and *Leuconostocaceae*. *Int. J. Syst. Evol. Microbiol.* *70*, 2782–2858.
- Zheng, Y., Valdez, P.A., Danilenko, D.M., Hu, Y., Sa, S.M., Gong, Q., Abbas, A.R., Modrusan, Z., Ghilardi, N., de Sauvage, F.J., and Ouyang, W. (2008). Interleukin-22 mediates early host defense against attaching and effacing bacterial pathogens. *Nat. Med.* *14*, 282–289.

## STAR★METHODS

### KEY RESOURCES TABLE

REAGENT or RESOURCE	SOURCE	IDENTIFIER
<b>Bacterial strains</b>		
See <a href="#">Table S3</a> for bacterial stains used in this study		N/A
<b>Chemicals</b>		
Agar	Alfa	Cat#A10752
Agarose	IBI	Cat# IB70042
LB broth	Acumedia, Neogen	Cat# 7290A
MRS broth	BD	Cat# 288110
M17 broth	BD	Cat# 218561
Potassium Buffered Saline	Gibco	Cat# 14190-144
0.45- $\mu\text{m}$ -pore-size cellulose acetate membrane	Sigma	Product# WHA69012504
0.4- $\mu\text{m}$ -pore-size filter insert	Cell Treat	Part no 230607
8- $\mu\text{m}$ -pore-size filter insert	Cell Treat	Part no 230611
Acetic acid standard solution	Fisher Scientific	Cat# A38S-500
Sulfuric acid	Fisher Scientific	Cat# A300-500
Protease	Sigma	Product# P5147
Magnesium sulfate	Fisher Scientific	Cat# M65-500
RNase A	Thermo Scientific	Cat# EN0531
DNase I	Invitrogen	Cat# 18068015
$\alpha$ -amylase	Sigma	Cat# 10065
Sodium chloride	Fisher Scientific	Cat# S271-500
Tris-HCl	Calbiochem	Product# 648310-M
Sodium dodecyl sulfate	Sigma	Product# L4509
24-well plates	Fisher Scientific	Cat# 12556006
Agarose	DOT Scientific Inc.	Cat# DS170042
Pellet paint	VWR International	Cat# 9049-3
Chow diet	LabDiet	Cat# 5201
DpnI	Fisher Scientific	Cat# FERFD1704
0.22 $\mu\text{m}$ filter, Polyvinylidene fluoride [PVDF]	Millipore	Cat# SLGVM33RS
Sodium hydroxide	Fisher Chemical	Cat# S318100
Methanol	Fisher Chemical	Cat# A456-500
Formic acid	Fisher Chemical	Cat# A11350
Chloramphenicol	Dot Scientific	Cat# DSC61000-25
Erythromycin	Fisher Scientific	Cat# BP920-25
Rifampicin	TCI Chemicals	R0079-25G
Vancomycin	Chem-Impex	Cat# 00315
Ampicillin	DOT Scientific	Cat#DSA40040-25
Ethanol	KOPECTEC	Cat# V1016
P <sub>sak</sub> Induction peptide	Peptide2.0	Sequence: MAGNSSNFIHKIKQIFTHR
Choice Taq DNA polymerase master mix	Denville Scientific	Cat# CB4070-8
Phusion Hot Start polymerase II	Thermo Scientific	Cat# F-549-L
T4 DNA ligase	Thermo Scientific	Cat# EL0011
Polynucleotide kinase	Thermo Scientific	Cat# EK0031
dATP	Promega	Cat# U120A
Ampligase	Lucigen	Cat# A32750

(Continued on next page)



<b>Continued</b>		
REAGENT or RESOURCE	SOURCE	IDENTIFIER
Sodium Hydroxide	Fisher Scientific	Cat# S318-500
HCl	Ricca Chemical Company	Cat# 3440-1
Zirconia/silica beads	Bio Spec	Cat#11079101Z
<b>Critical commercial assay kits</b>		
Qubit dsDNA quantification kit	Invitrogen	Cat# Q32853
Genomic DNA purification kit	Promega	Cat# A1120
GeneJET PCR purification kit	Thermo Scientific	Cat# K0701
Plasmid isolation kit	Promega	Cat# A9340
Leptin ELISA kit	R&D systems	Cat# MOB00B
<b>Experimental models: Organisms/strains</b>		
C57BL/6J, Male	Jackson Laboratory	Cat# 000664
<b>Oligonucleotides</b>		
See <a href="#">Table S4</a> for primers used for this study		N/A
<b>Recombinant DNA</b>		
See <a href="#">Table S5</a> for plasmids used for this study		N/A
<b>Software and algorithms</b>		
JMP Pro	SAS	Ver. 11.0.0
Datagraph	Visual Data Tools Inc.	Ver. 4.2.1
Bruker Hystar software	Bruker	Hystar 3.2.
MEGA	( <a href="#">Stecher et al., 2020</a> )	Ver. 10.1.7

## RESOURCE AVAILABILITY

### Lead contact

Further information and requests for resources should be directed to and will be fulfilled by the lead contact, Jan-Peter van Pijkeren ([vanpijkeren@wisc.edu](mailto:vanpijkeren@wisc.edu)).

### Materials availability

Requests for the plasmids and strains used in this study should be directed to and will be fulfilled by the [lead contact](#), Jan-Peter van Pijkeren ([vanpijkeren@wisc.edu](mailto:vanpijkeren@wisc.edu)) and may require completion of a standard materials transfer agreement (MTA).

### Data and code availability

- This paper analyzes existing, publicly available genome data. References and accession numbers pertaining genome sequences analyzed in this paper can be found in [Table S3](#)
- This paper does not report original code
- Any additional information required to reanalyze the data reported in this paper is available from the [lead contact](#) upon request.

## EXPERIMENTAL MODEL AND SUBJECT DETAILS

### Microbial strains and growth conditions

The strains and plasmids used in this study are listed in [Tables S3](#) and [S5](#). *L. reuteri* strains were cultured in De Man Rogosa Sharpe (MRS) medium (Difco, BD BioSciences). For growth curve experiments, *L. reuteri* strains were grown for ~16 hours and transferred to pre-warmed MRS with a starting inoculum of OD<sub>600</sub> = 0.1. Where appropriate, antibiotics were added to the medium as described below. For *in vitro* competition and biofilm formation experiments, we used filter-sterilized (0.22 μm PVDF filter, Millipore) MRS that was adjusted to pH 4.0 with 1 M HCl. Unless stated otherwise, we prepared bacterial cultures as follows: *L. reuteri* strains were incubated at 37°C under hypoxic conditions (5% CO<sub>2</sub>, 2% O<sub>2</sub>). The MRS agar plates were incubated for 24 hours for colony counting. *Escherichia coli* EC1000 was used as general cloning host and cultured with aeration at 37°C in lysogeny broth (LB, Teknova). *Lactococcus lactis* MG1363 harboring pJP042 (VPL2047) was cultured under static condition at 30°C in M17 broth that was supplemented with glucose (0.5% [w/v]). Electrocompetent *E. coli* EC1000 were prepared as described in [Sambrook and Russell \(2006\)](#). Electrocompetent *L. reuteri* cells were prepared as described in [Van Pijkeren and Britton \(2012\)](#). If applicable, MRS for *L. reuteri* was supplemented with 5 μg/ml erythromycin, 5 μg/ml chloramphenicol or 25 μg/ml rifampicin.

## Mice

### Ethics statement

All mouse experiments were performed in accordance with NIH guidelines, Animal Welfare Act, and US federal law and were approved by the Application Review for Research Oversight at Wisconsin (ARROW) committee and overseen by the Institutional Animal Care and Use Committee (IACUC) under protocol ID M005149-RO1-A01. Conventional pathogen-free and germ-free mice were housed at Animal Science and Laboratory of Animal Research Facilities respectively at the University of Wisconsin-Madison.

### Mice strains and husbandry

Twelve-week-old germ-free male B6 mice (C57BL/6J) were maintained in a controlled environment in plastic flexible film gnotobiotic isolators with a 12 hours light cycle. Sterilized food (standard chow, LabDiet 5001, St. Louis, MO) and water were provided *ad libitum*.

## METHOD DETAILS

### Reagents and enzymes

To amplify DNA fragments for cloning and screening, we used Phusion Hot Start DNA Polymerase II (Thermo Scientific) and Taq DNA polymerase (Denville Scientific), respectively. We used T4 DNA ligase (Thermo Scientific) for blunt-end ligations. If applicable, we treated column purified (Thermo Scientific) PCR products with DpnI (Thermo Scientific) to remove plasmid template DNA. Phosphorylation of double stranded DNA fragments was performed with T4 Polynucleotide Kinase (Thermo Scientific). Ligase Cycling Reactions (LCR) were performed as described previously (De Kok et al., 2014). Oligonucleotides and double-stranded DNA fragments were synthesized by Integrated DNA Technologies (IDT; Table S4).

### Construction of *L. reuteri* mutant strains

#### Construction of suicide shuttle vectors for homologous recombination

To generate mutant strains in lactobacilli we used the counterselection plasmid pVPL3002 (Zhang et al., 2018). To generate *L. reuteri* R2lc::Cm, R2lcΔpks::Cm, mlc3Δact and DSM17938Δact, 500-1000 bp upstream and downstream flanking regions of target genes were amplified by PCR (see Table S4 for oligonucleotides). We used following oligonucleotides; oVPL3113-3114 (upstream, R2lc::Cm), oVPL3115-3116 (downstream, R2lc::Cm), oVPL3194-3195 (upstream, mlc3Δact), oVPL3196-3197 (downstream, mlc3Δact), oVPL3237-oVPL3238 (upstream, DSM17938Δact) and oVPL3239-oVPL3240 (downstream, DSM17938Δact).

Amplicons were purified (GeneJET PCR Purification Kit, Thermo Scientific). The pVPL3002 backbone was amplified with oVPL187-oVPL188, purified (GeneJET PCR Purification Kit, Thermo Scientific) and digested with DpnI. Purified amplicons were quantified (Qubit, Life Technologies). The amplicons were mixed at equimolar quantities (0.25 pmol), followed by phosphorylation, ethanol precipitation and LCR (De Kok et al., 2014). Following LCR, DNA was precipitated with Pellet Paint co-precipitant (VWR International), resuspended in 5 μL sterile water and transformed into electrocompetent *E. coli* EC1000 cells. By PCR, we screened for insertion of our target sequences using oligonucleotides that flank the multiple cloning site (oVPL49-oVPL97). Finally, the integrity of deletion and insertion cassettes was determined by Sanger sequencing. The resultant constructs were named as follow; VPL31130 (contains the chloramphenicol insertion cassette for R2lc::Cm and R2lcΔpks::Cm), and VPL31079 (contains act deletion cassette for mlc3).

#### Construction of *L. reuteri* mutants by homologous recombination

Three micrograms plasmid DNA was electroporated in electrocompetent *L. reuteri* cells. For R2lc::Cm, bacterial cells were plated on MRS agar containing 5 μg/ml chloramphenicol, colonies were screened by PCR (oVPL3117-3118) to confirm double crossover event. For mlc3Δact, bacterial cells were plated on MRS agar containing 5 μg/ml erythromycin and colonies were screened for single crossover (SCO) event by PCR with oligonucleotide mixtures oVPL3216-oVPL3217-oVPL97 (upstream SCO) and oVPL3216-oVPL3217-oVPL49 (downstream SCO). Following confirmation of SCO, bacterial cells were cultured for one passage in MRS broth without antibiotic selection, and cells were plated on MRS agar plates containing 400 μg/ml vancomycin. Vancomycin-resistant colonies represent cells in which a second homologous recombination event took place (Zhang et al. 2018). To confirm double crossover (DCO), we performed PCR using oligonucleotides oVPL3216-oVPL3217 (for mlc3Δact) and oVPL3244-oVPL3245 (for DSM17938Δact). We used Sanger sequencing to verify the integrity of the recombinant strains.

#### Inactivation of *L. reuteri* 6475 acyltransferase by recombineering

To inactivate the gene putatively encoding acyltransferase (LAR\_1287) in *L. reuteri* 6475, we applied single-stranded DNA recombineering using previously established procedure (Van Pijkeren et al., 2012). An 80-mer oligonucleotide identical to the lagging strand of replication with five consecutive mismatches yielded, when incorporated, two in-frame stop codons. Electrocompetent *L. reuteri* 6475 harboring pJP042 (VPL2047) was transformed with 100 μg oVPL3166. To identify recombinants, we plated cells on MRS plates and recombinant genotypes were identified by mismatch amplification mutation assay (MAMA) PCR (Cha et al., 1992) using oligonucleotide combination oVPL3163-3164-3165. After colony purification, the pure genotype recombinants were confirmed by MAMA-PCR and Sanger sequencing. The resulted mutant strain was named as *L. reuteri* 6475Δact. To cure pJP042, cells were grown in plain MRS for two passages and plated on MRS agar. By replica plating on MRS agar plates without and with erythromycin we identified plasmid cured derivatives.

### Construction of $\Delta act$ mutants, pSIP controls, and complemented strains

To complement *act* into *L. reuteri* 6475 $\Delta act$  (VPL4241) and *mlc3* $\Delta act$  (VPL4246), we amplified by PCR the *act* gene from *L. reuteri* 6475 and *mlc3* (oVPL3188-3189), the EFtu promoter from *L. reuteri* 6475 (oVPL1447-1448) and the pNZ8048 backbone (oVPL309-310). PCR products were quantified, purified (Fisher Scientific, GeneJET), and DpnI treated (Fisher Scientific, FastDigest). Subsequently, amplicons were purified again and mixed at equimolar concentrations (0.25 pmol), phosphorylated (T4 polynucleotide kinase, Thermo Scientific), and ethanol precipitated. DNA fragments were assembled by Ligase Cycling Reactions (LCR) (oVPL 4262-4264), followed by precipitation with Pellet Paint co-precipitant (VWR International), resuspension in 10  $\mu$ L sterile water and transformation into electrocompetent EC1000 cells. By colony PCR, inserts were identified (oVPL1447 and oVPL3188), and the integrity of the constructs was verified by Sanger sequencing. The resulting strains were labeled *E. coli* VPL31603 and VPL31601 which contain pNZ8048-*act<sub>mlc3</sub>* and pNZ8048-*act<sub>6475</sub>*, respectively. Hereafter, pNZ8048-*act<sub>mlc3</sub>* and pNZ8048-*act<sub>6475</sub>* are referred to as pVPL31603 and pVPL31601, respectively.

One microgram of pVPL31603 and pVPL31601 were transformed into electrocompetent rifampicin-resistant *L. reuteri* *mlc3* $\Delta act$  (VPL4248) and *L. reuteri* 6475 $\Delta act$  (VPL4241), respectively. Cells were plated on MRS containing 5  $\mu$ g/mL erythromycin and screened via colony PCR (oVPL1447 and oVPL3188). The mutant strains were labeled VPL31666 (*mlc3* $\Delta act$  + pVPL31603) and VPL31664 (6475 $\Delta act$  + pVPL31601). Using the above method, control strains were generated by transforming pNZ8048 empty vector into rifampicin-resistant *L. reuteri* *mlc3*, *mlc3* $\Delta act$ , 6475, and 6475 $\Delta act$ , and were labeled VPL31668, 31675, 31613, 31673, respectively.

### Generating rifampicin resistant *L. reuteri* strains

To enumerate the bacteria co-cultured with R2lc::*cm*, we generated mutants that naturally acquired mutations to yield resistance to rifampicin. Briefly, *L. reuteri* strains were grown in MRS for 16 hours and plated on MRS agar containing 25  $\mu$ g/ml rifampicin followed by 24 hours incubation at 37°C under hypoxic condition. Rifampicin resistant colonies were purified by a conventional streak plate method and the corresponding cultures were stored at -80°C.

### Whole genome sequencing

Genomic DNA was isolated using the genomic DNA purification kit (Wizard, Promega), and DNA concentrations were determined using the Qubit® (dsDNA High Sensitivity Assay Kit, Life Technologies). Whole genome sequencing was performed at the University of Wisconsin-Madison Biotechnology Center. Samples were prepared according to the Celero PCR Workflow with Enzymatic Fragmentation (NuGEN). Quality and quantity of the finished libraries were assessed using an Agilent bioanalyzer and Qubit® dsDNA HS Assay Kit, respectively. Libraries were standardized to 2 nM. Paired end, 250 bp sequencing was performed using the Illumina NovaSeq6000. Images were analyzed using the standard Illumina Pipeline, version 1.8.2.

### Comparative genome and bioinformatic analyses

Reads were assembled *de novo* using SPAdes (version 3.11.1) software. Assembled draft genomes were uploaded to National Center of Biotechnology Information (NCBI) (Özçam and van Pijkeren, 2019; Zhang et al., 2020) and the Joint Genome Institute Integrated Microbial Genomes and Microbes (JGI-IMG) database to perform comparative genome analyses. The web-based comparative genome database Phylogenetic Profiler from the JGI-IMG was used to identify genes present only in *L. reuteri* strains that are resistant to R2lc (ATCC PTA6475 [named as MM4-1A in JGI-IMG], *mlc3*, DSM20016 and Lr4000).

We used *L. reuteri* JCM112 acyltransferase protein sequence (LAR\_1287) as a query sequence to search the National Center for Biotechnology Information (NCBI) Nonredundant protein sequence (nr) and JGI-IMG database to identify homologous among *L. reuteri* strains. Partial protein sequences were excluded from the data set. Amino acid sequences of *L. reuteri* Act were aligned with MUSCLE (Edgar, 2004), and we constructed the phylogenetic tree with MEGA 7.0 software (Kumar et al., 2016).

### In vitro competition assay with *L. reuteri* strains

*L. reuteri* strains were grown in MRS for 16 hours. The rifampicin resistant competition strains were co-cultured with either R2lc::*cm* or R2lc $\Delta pks$ ::*cm* at optical density OD<sub>600</sub> = 0.05 (from each strain in co-culture) in pre-warmed MRS broth (pH 4.0). The co-cultures were then incubated for 24 hours at 37°C. After incubation, a serial dilution was performed and 100  $\mu$ L from appropriate dilution was plated to MRS plates containing chloramphenicol (5  $\mu$ g/ml) or rifampicin (25  $\mu$ g/ml). After 24 hours of incubation, we determined the competition ratios.

### In vitro biofilm assay

*L. reuteri* R2lc, R2lc $\Delta pks$  and 100-23 cultures were inoculated into 2 mL MRS broth at OD<sub>600</sub> = 0.1 (0.05 from each strain if co-culture) in 24-well plates (Fisher Scientific) and incubated for 24 hours. The culture supernatant was removed, and bacterial biofilm was washed three times with 1 mL PBS. The adherent cells were scraped from the well and re-suspended in 2 mL PBS. For colony enumeration, the suspended cultures were plated on MRS plates containing chloramphenicol (5  $\mu$ g/ml) for R2lc and R2lc $\Delta pks$  or rifampicin (25  $\mu$ g/ml) for 100-23, and incubated for 24 hours.

### Split-well (filter separated) competition experiment

Two cultures (R2lc:cm<sup>R</sup> or R2lc  $\Delta pks$ :cm<sup>R</sup> vs. 100-23, Rif<sup>R</sup>) were separated by two inserts with different membrane pore sizes in 6-well plates as shown in Figure 1E. Filter inserts (0.4 or 8  $\mu$ m; CellTreat) were placed in a 6-well plate to create upper and lower layers.

Overnight cultures (16 hours at 37°C in MRS) of 100-23 and either R2lc:Cm<sup>R</sup> or R2lcΔ*pks*:Cm<sup>R</sup> were washed once in MRS (pH 4.0) by centrifugation (5 min at 5,000 × *g*), resuspended in MRS to set the initial to OD<sub>600</sub> = 0.05. Three mL of R2lc:Cm<sup>R</sup> (or R2lc Δ*pks*:Cm<sup>R</sup>) and 100-23 (Rif<sup>R</sup>) suspensions were added to upper (R2lc:Cm<sup>R</sup> or R2lcΔ*pks*:Cm<sup>R</sup>) and lower wells (100-23 [Rif<sup>R</sup>]), respectively. Plates were incubated for 24 hours at 37°C under hypoxic conditions. The viability of the cells (CFU/mL) was determined by the standard plate count method as described above.

### Sample preparation for double-layer agar antimicrobial assay

Live cells from R2lc:Cm<sup>R</sup> or R2lc Δ*pks*:Cm<sup>R</sup> overnight cultures (16 hours) were prepared in MRS or PBS following a wash with MRS and PBS, respectively. Bacterial culture supernatants were collected following centrifugation (1 min at 15,000 × *g*). Heat-treated (dead) cells were prepared following heat treatment at 70°C for 30 min. For secondary metabolite extraction from cells, acetone (1 vol) or methanol (1/50 vol) was added to the washed cell pellets obtained from fresh culture followed by shaking at 500 rpm at room temperature for 3 hours (Eppendorf, Thermomixer 5382). Before drop plating, all supernatant and cell extracts were filter-sterilized (0.22 μm, EMD Millipore).

### Double-layer agar antimicrobial assay

Bacterial culture, supernatant, and cell extracts of R2lc:Cm<sup>R</sup> or R2lc Δ*pks*:Cm<sup>R</sup> were subjected to the antimicrobial assay using the double-layer agar containing 100-23 cells. Two hundred μL of 100-23 overnight culture diluted in MRS (OD<sub>600</sub> = 0.5) was mixed with 3 mL of pre-warmed (50°C) 0.2% agarose in dH<sub>2</sub>O followed by pouring the mixture onto the MRS-agar plate. Solidified top-agar was dried for 15 min at room temperature. Ten μL of each sample was dropped onto the top agar and dried until completely absorbed. All double-layer agar plates were incubated at 37°C under a hypoxic condition (2% O<sub>2</sub>, 5% CO<sub>2</sub>) for 24 hours.

### Construction of leptin producing 100-23 strain and leptin release experiment

Rifampicin-resistant 100-23 strain (VPL4251) was transformed with pVPL31131, the plasmid that encodes murine leptin (Alexander et al., 2019), to yield strain VPL31598 (100-23/leptin). Cm<sup>R</sup>-derivatives of *L. reuteri* R2lc (VPL4231) and R2lcΔ*pks* (VPL4209), and 100-23/leptin were grown in MRS, the latter supplemented with 5 μg/ml erythromycin. One mL of each bacterial culture was centrifuged (2 min 16,000 × *g*), and washed in an equal volume of MRS, which was subsequently added to 40 mL pre-warmed MRS. Mono-culture experiments for 100-23/leptin and co-culture experiments for R2lc + 100-23/leptin, R2lcΔ*pks* + 100-23/leptin were initiated with a starting inoculum of OD<sub>600</sub> = 0.1. At 0, 2, 4, 6, 8, and 10 hours time points, we collected samples of each culture and plated on MRS-agar supplemented with 25 μg/ml rifampicin to determine 100-23/leptin CFU counts. In addition, we collected samples of each culture to harvest cell-free supernatant and total cell lysate for leptin quantification. Nine hundred microliters culture were centrifuged for 1 minute at 16,000 × *g*, filter-sterilized, and stored at -20°C. To obtain total cell lysate, we used a bead beater (BioSpec) to lyse 1 mL culture samples in tubes containing ~100 μL 0.1 mm zirconia/silica beads with 3 minutes total bead beating time, performed in two 90 seconds stages with 1 min cooling on ice in between. After bead beating, samples were spun down (1 minute at 10,000 rpm) and the supernatant was filter-sterilized and stored at -20°C. Supernatant and cell lysate samples were thawed on ice and leptin levels were quantified by ELISA (R&D Systems).

### In vivo competition experiment

Germ-free B6 (C57BL/6J, male 12-week-old, n=4-5mice/group) mice were maintained in sterile biocontainment cages in the gnotobiotic animal facility at the University of Wisconsin-Madison. Mice were colonized following a single oral gavage of 200 μL *L. reuteri* cocktail in PBS (1:1 ratio, ~2 × 10<sup>8</sup> CFU). Each group was administered by oral gavage a mixture of either *L. reuteri* R2lc:Cm + competition strain or *L. reuteri* R2lcΔ*pks*:Cm + competition strain. Twenty-four hours following colonization, fecal samples were collected daily from individual mice to determine the fecal CFUs. Fecal samples were homogenized and diluted in PBS followed by plating on MRS-Cm and MRS-Rif. After 24 hours incubation colonies were counted. At day 7, mice were sacrificed by CO<sub>2</sub> asphyxiation and digesta from forestomach, jejunum, cecum and colon were collected, weighed and re-suspended with PBS (100 mg/ml) to determine the CFUs per 100 mg contents.

### Ampicillin resistance experiment

*L. reuteri* 6475 + pCtl, 6475Δ*act* + pCtl, 6475Δ*act* + pNZ8048-*act*<sub>6475</sub>, *mlc3* + pCtl, *mlc3*Δ*act* + pCtl, and *mlc3*Δ*act* + pNZ8048-*act*<sub>*mlc3*</sub>, were grown in MRS supplemented with 5 μg/ml erythromycin for 16 hours. The cultures were centrifuged, washed twice in 1 mL MRS, and sub-cultured into 10 mL pre-warmed MRS with no antibiotic. Sub-cultures grew to OD<sub>600</sub> = 0.6 and subsequently sub-cultured again into 1 mL aliquots containing a range of concentrations of ampicillin with a starting inoculum of OD<sub>600</sub> = 0.01. Samples were transferred to a 96-well flat-bottom plate and incubated for 24 hours in a MultiSkan Sky Plate Reader (ThermoFisher, Waltman, MA, USA) with 37°C, kinetic loop with 5 second shaking intervals every 30 min.

### Determination of peptidoglycan O<sup>6</sup>-acylation by HPLC

Peptidoglycan (PG) was extracted following a previously reported method (Ha et al., 2016) with some modifications. After 16 hours incubation, the cells were harvested by centrifugation at 5,000 × *g* (4 °C) for 5 min, washed twice with 10 mM sodium phosphate buffer (pH 6.5) and then resuspended in 50 mL of water (pH 5.5 to 6.0). The cell suspension was boiled in an equal volume of 8% [w/v] sodium dodecyl sulfate (SDS, 4% [w/v] final concentration) in 25 mM SP buffer (pH 6.5) for 1 hour under reflux with stirring.

Samples were centrifuged ( $30,000 \times g$ ) and the SDS-insoluble PG was washed (5 times) with sterile double distilled H<sub>2</sub>O to completely remove SDS and lyophilized. Lyophilized PG was dissolved in 4 mL of 1:1 mixture of 10 mM Tris-HCl (pH 6.5) and 10 mM NaCl and sonicated for 2 min. The PG suspension was treated with 100  $\mu\text{g/mL}$   $\alpha$ -amylase (from *Bacillus* sp., Sigma), 10  $\mu\text{g/mL}$  DNase I (Invitrogen), 50  $\mu\text{g/mL}$  RNase A (Thermo Scientific), and 20 mM MgSO<sub>4</sub> solution and incubated overnight at 37 °C with shaking. The PG suspension was further treated with 200  $\mu\text{g/mL}$  protease (from *Streptomyces griseus*, Sigma) and incubated overnight at 37 °C with shaking. Samples were then re-extracted by boiling in 1% SDS for 40 min, washed, lyophilized and stored at -20 °C until use.

For the analysis of acetate release from PG, lyophilized PG (20 mg) was dissolved in 150  $\mu\text{L}$  ddH<sub>2</sub>O and mixed with an equal volume of either 160 mM NaOH or 160 mM sodium phosphate buffer (pH 6.5) and incubated overnight at 37 °C with shaking. The peptidoglycan was collected by centrifugation at  $15,000 \times g$  for 20 min. The supernatant was filtered through a 0.45- $\mu\text{m}$ -pore-size cellulose acetate membrane and quantitation of released acetate was carried out in a Dionex UltiMate 3000 HPLC equipped with an LPG-3400 quaternary pump, a WPS-3000 analytical autosampler, and a DAD-3000 diode array detector.

The filtered supernatants or 100  $\mu\text{M}$  of acetic acid standard solution were injected onto a 300  $\times$  7.8 mm Rezex™ ROA-Organic Acid H<sup>+</sup> (8%) column and eluted isocratically with 20 mM H<sub>2</sub>SO<sub>4</sub> at 0.5 mL min<sup>-1</sup>. To quantify MurNAc, lyophilized peptidoglycan-cell wall polysaccharide complex samples (20 mg) were acid-hydrolysed (6 N HCl, 100 °C for 1.5 hour, (Ha et al., 2016) to liberate total MurNAc. The supernatant was then collected after centrifugation, filtered, and injected into the same Rezex™ ROA-Organic Acid H<sup>+</sup> (8%) column in an HPLC equipped with a refractive index (RI) detector. MurNAc was separated isocratically using 20 mM H<sub>2</sub>SO<sub>4</sub> (Sgobba et al., 2018) at 0.5 mL min<sup>-1</sup>. MurNAc was quantified against a MurNAc calibration curve.

### LC/MS sample preparation

An aliquot of 1.5 mL from each of the cultures were collected in Eppendorf tubes and centrifuged at  $2152 \times g$  for 5 min. The supernatants were collected and transferred to dram vials and the cell pellets were incubated for 1 hour in 100  $\mu\text{L}$  methanol. Next, the samples were centrifuged again, and the methanol extracts were added to 1 dram vials. A Gilson GX-271 liquid handling system was used to subject 900  $\mu\text{L}$  of the samples to automated solid phase extraction (SPE). Extracts were loaded onto pre-conditioned (1 mL MeOH followed by 1 mL H<sub>2</sub>O) EVOLUTE ABN SPE cartridges (25 mg absorbent mass, 1 mL reservoir volume; Biotage, S4 Charlotte, NC). Samples were subsequently washed using H<sub>2</sub>O (1 mL) to remove media components, and eluted with MeOH (500  $\mu\text{L}$ ) directly into an LC/MS-certified vial.

### UHPLC/HRESI-qTOF-MS analysis of extracts

LC/MS data were acquired using a Bruker MaXis ESI-qTOF mass spectrometer (Bruker, Billerica, MA) coupled with a Waters Acquity UPLC system (Waters, Milford, MA) with a PDA detector operated by Bruker Hystar software, as previously described (Hou et al., 2012). Briefly, a solvent system of MeOH and H<sub>2</sub>O (containing 0.1% formic acid) was used on an RP C-18 column (Phenomenex Kinetex 2.6 $\mu\text{m}$ , 2.1  $\times$  100 mm; Phenomenex, Torrance, CA) at a flow rate of 0.3 mL/min. The chromatogram method started with a linear gradient from MeOH/ H<sub>2</sub>O (10%/90%) to MeOH/ H<sub>2</sub>O (97%/3%) in 12 min, then held for 2 min at MeOH/ H<sub>2</sub>O (97%/3%). Full scan mass spectra ( $m/z$ -150-1550) were measured in positive Electrospray Ionization (ESI) mode. The mass spectrometer was operated using the following parameters: capillary, 4.5 kV; nebulizer pressure, 1.2 bar; dry gas flow, 8.0 L/min; dry gas temperature, 205 °C; scan rate, 2 Hz. Tune mix (ESI-L low concentration; Agilent, Santa Clara, CA) was introduced through a divert valve at the end of each chromatographic run for automated internal calibration. Bruker Data Analysis 4.2 software was used for analysis of chromatograms.

### QUANTIFICATION AND STATISTICAL ANALYSIS

Statistical analyses were performed with JPM Pro (SAS). All statistical details of experiments can be found in the figure legends. Data were considered statistically significant at  $p < 0.05$ . No data was excluded from the analyses. A minimum of three biological replicates were obtained for all *in vitro* experiments.