

*Phenolic acid intake, delivered via moderate champagne wine consumption, improves spatial working memory via the modulation of hippocampal and cortical protein expression/activation.*

Article

Accepted Version

Corona, G., Vauzour, D., Hercelin, J., Williams, C. M. ORCID: <https://orcid.org/0000-0003-4452-671X> and Spencer, J. P. E. ORCID: <https://orcid.org/0000-0003-2931-7274> (2013)  
Phenolic acid intake, delivered via moderate champagne wine consumption, improves spatial working memory via the modulation of hippocampal and cortical protein expression/activation. *Antioxidants & Redox Signaling*, 19 (4). pp. 1676-1689. ISSN 1523-0864 doi: <https://doi.org/10.1089/ars.2012.5142> Available at <https://centaur.reading.ac.uk/33675/>

It is advisable to refer to the publisher's version if you intend to cite from the work. See [Guidance on citing](#).

To link to this article DOI: <http://dx.doi.org/10.1089/ars.2012.5142>

Publisher: Mary Ann Liebert Inc

Publisher statement: This is a copy of an article published in the *Antioxidants & Redox Signaling* © 2013 [copyright Mary Ann Liebert, Inc.]; *Antioxidants & Redox*

Signaling is available online at: <http://online.liebertpub.com>.

All outputs in CentAUR are protected by Intellectual Property Rights law, including copyright law. Copyright and IPR is retained by the creators or other copyright holders. Terms and conditions for use of this material are defined in the [End User Agreement](#).

[www.reading.ac.uk/centaur](http://www.reading.ac.uk/centaur)

## **CentAUR**

Central Archive at the University of Reading

Reading's research outputs online

ANTIOXIDANTS & REDOX SIGNALING  
Volume 00, Number 00, 2013  
© Mary Ann Liebert, Inc.  
DOI: 10.1089/ars.2012.5142

## ORIGINAL RESEARCH COMMUNICATION

---

# AU1 ► Phenolic Acid Intake, Delivered *Via* Moderate Champagne Wine Consumption, Improves Spatial Working Memory *Via* the Modulation of Hippocampal and Cortical Protein Expression/Activation

 AU2 ► Giulia Corona,<sup>1,\*</sup> David Vauzour<sup>1,\*†</sup>, Justine Hercelin,<sup>1</sup> Claire M. Williams,<sup>2</sup> and Jeremy P.E. Spencer<sup>1</sup>

### Abstract

**Aims:** While much data exist for the effects of flavonoid-rich foods on spatial memory in rodents, there are no such data for foods/beverages predominantly containing hydroxycinnamates and phenolic acids. To address this, we investigated the effects of moderate Champagne wine intake, which is rich in these components, on spatial memory and related mechanisms relative to the alcohol- and energy-matched controls. **Results:** In contrast to the isocaloric and alcohol-matched controls, supplementation with Champagne wine (1.78 ml/kg BW, alcohol 12.5% vol.) for 6 weeks led to an improvement in spatial working memory in aged rodents. Targeted protein arrays indicated that these behavioral effects were paralleled by the differential expression of a number of hippocampal and cortical proteins (relative to the isocaloric control group), including those involved in signal transduction, neuroplasticity, apoptosis, and cell cycle regulation. Western immunoblotting confirmed the differential modulation of brain-derived neurotrophic factor, cAMP response-element-binding protein (CREB), p38, dystrophin, 2',3'-cyclic-nucleotide 3'-phosphodiesterase, mammalian target of rapamycin (mTOR), and Bcl-xL in response to Champagne supplementation compared to the control drink, and the modulation of mTOR, Bcl-xL, and CREB in response to alcohol supplementation. **Innovation:** Our data suggest that smaller phenolics such as gallic acid, protocatechuic acid, tyrosol, caftaric acid, and caffeic acid, in addition to flavonoids, are capable of exerting improvements in spatial memory *via* the modulation in hippocampal signaling and protein expression. **Conclusion:** Changes in spatial working memory induced by the Champagne supplementation are linked to the effects of absorbed phenolics on cytoskeletal proteins, neurotrophin expression, and the effects of alcohol on the regulation of apoptotic events in the hippocampus and cortex. *Antioxid. Redox Signal.* 00, 000–000.

### Introduction

**D**ECLINES IN BOTH cognitive and motor performance due to structural- and activity-related changes in neuronal and glial function are known to occur during normal aging (15). Recently, flavonoid-containing foods/beverages have received much attention with regard to their neuroprotective effects (49), including a potential to protect neurons against

neurotoxin-induced injury (39, 64), suppress neuroinflammation (57), and promote memory and learning (30, 42, 45, 60). In addition to this, numerous epidemiological studies have reported that a low-to-moderate intake of wine (1–2 glasses per day), which is also rich in flavonoids, may reduce the risk of coronary heart disease, ischemic stroke, dementia, and cognitive impairment (25, 27, 28, 37). As such, there is an interest in the potential of regular, moderate wine

<sup>1</sup>Molecular Nutrition Group, Centre for Integrative Neuroscience and Neurodynamics, School of Chemistry, Food and Pharmacy, University of Reading, Reading, United Kingdom.

<sup>2</sup>School of Psychology and Clinical Language Sciences, University of Reading, Reading, United Kingdom.

<sup>†</sup>*Current affiliation:* Department of Nutrition, Norwich Medical School, Faculty of Medicine and Health Sciences, University of East Anglia, Norwich, United Kingdom.

\*These authors contributed equally to the work.

### Innovation

Flavonoid-rich foods and beverages have been shown to exert a multiplicity of neuroprotective effects in the brain, whereas little is known regarding the actions of smaller phenolics/polyphenols. Our data provide the first evidence that phenolics such as gallic acid, protocatechuic acid, tyrosol, caftaric acid, and caffeic acid, delivered *via* moderate Champagne wine intake, also induce improvements in spatial memory in aged rodents and are dependent on the potential of these phenolics to modulate the expression of a number of proteins in the cortex and hippocampus related to the control of cell signaling, neuronal plasticity, cell cycle, and apoptosis.

consumption to counteract normal brain aging and in improving memory and learning, through their potential to deliver relatively high amounts of flavonoids (8, 10). However, although red wines contain high levels of flavonoids and other phenolics relative to white wines (32), Champagne wine is relatively rich in phenolic compounds (65) such as hydroxybenzoic acids, hydroxycinnamic acids (and their tartaric-derivative esters), phenolic alcohols, and phenolic aldehydes (6). The increased levels of phenolics in Champagne wine compared to other white wines derive predominantly from the two red grapes, Pinot Noir and Pinot Meunier, which are used in its production along with the white grape Chardonnay (9). As such, it is hypothesized that Champagne may deliver significant quantities of phenolics, which may in turn be capable of driving vascular and neuronal effects capable of mediating changes in the cognitive performance.

Previously, Champagne wine consumption has been observed to improve acute vascular function (62), in a similar manner to that of red wine (7, 12). Further, tyrosol, caffeic acid, and gallic acid, the phenolic compounds found at relatively high concentrations in Champagne, have been shown to potently inhibit peroxynitrite-induced cellular injury at physiologically relevant concentrations (0.1 to 10  $\mu$ M) (65), while nanomolar levels of tyrosol, caffeic acid, and *p*-coumaric acid protect cortical neurons against 5-*S*-cysteinyldopamine induced injury (61). Indeed, the levels of protection induced by these phenolics were equal to that, if not greater than, observed for a similar concentration of the flavonoids, (+)-catechin, (-)-epicatechin, and quercetin (61). The hydroxycinnamate, caffeic acid, has also been shown to be neuroprotective, counteracting inflammatory injury induced by 1-methyl-4-phenyl-1,2,3,6-tetrahydropyridine (MPTP) by decreasing the production of a number of inflammatory cytokines, downregulating the expression of inducible nitric oxide synthase, cyclooxygenase-2, and glial fibrillary acidic protein and lowering the production of NO and PGE<sub>2</sub> (56). In addition, caffeic acid-phenethyl ester may protect cerebellar granule neurons against glutamate-induced neuronal death *via* inhibition of p38 phosphorylation and caspase-3 activation (67) and significantly prevents hypoxic ischemic-induced neonatal rat brain damage in the cortex, hippocampus, and thalamus (68).

Despite these data, the impact of such phenolics on neuronal function/activity has received little attention relative to flavonoids, in particular in animal and human trials, and there is a lack of understanding with regard to their mechanisms of

action in the brain *in vivo*. In particular, there are no data relating to the consumption of small phenolics and hydroxycinnamates, such as those present in Champagne wine on memory and neurocognitive performance. To address this, we have investigated the potential effects of moderate, medium-term Champagne wine intake on age-related deficits in spatial working memory and motor performance and the potential mechanisms of action in the hippocampus and cortex.

### Results

#### *Analysis of phenolic constituents in Champagne wine*

The high performance liquid chromatography (HPLC) analysis of the phenolic extract obtained from Champagne wine allowed us to identify and quantify the major constituents present (Fig. 1). The chromatographic profile of the organic extract at 280 nm (Fig. 1A) and 320 nm (Fig. 1B) highlights the major phenolic components in the Champagne extract utilized: gallic acid (peak 1), protocatechuic acid (peak 2), tyrosol (peak 3), caftaric acid (peak 4), and caffeic acid (peak 5). Overlapping standard runs with the flavonoids catechin (Std 6), epicatechin (Std 7), and the stilbene resveratrol (Std 8) indicated that these polyphenols were undetectable in the Champagne used (Fig. 1). The major phenolics identified (Fig. 1C) were quantified to precisely characterize the intake on supplementation of the Champagne intervention (Fig. 1D).

**Food intake and animal weight.** Animals were fed daily with Champagne, an isocaloric control or an isocaloric alcohol-containing control (Fig. 1D). There were no significant differences in food intake among the three groups throughout the study period (isocaloric control: 20.81 g/day; alcohol control: 20.42 g/day; Champagne group: 20.36 g;  $p > 0.05$ ). At baseline, the control, alcohol, and Champagne group animals weighed 478.11 ( $\pm 18.23$ ), 484.63 ( $\pm 48.06$ ), and 455.15 ( $\pm 36.97$ ) g, respectively, and there was no significant weight change throughout the intervention period in any of the groups (average weights at week 6: 480.70  $\pm 15.75$ , 490.80  $\pm 50.43$ , and 462.19  $\pm 31.20$  g, respectively;  $p > 0.05$ ).

**Spatial working memory.** At baseline, the animals performed at an average choice accuracy of 4.25 ( $\pm 0.27$ ), and there was no significant difference in choice accuracy between the three experimental groups (Fig. 2). At 6 weeks, there was a reduction in the choice accuracy of the both isocaloric control group (3.50  $\pm 0.27$ ) and alcohol group (4.00  $\pm 0.38$ ) and an increase in the choice accuracy of the Champagne group (5.29  $\pm 0.18$ ). A two-way analysis of variance (ANOVA) with repeated measures indicated that there were no significant changes with respect to time ( $F_{(1,20)} = 0.022$ , MSE = 0.026,  $p = 0.884$ ), or between treatments ( $F_{(2,20)} = 1.863$ , MSE = 2.734,  $p = 0.181$ ), but there was a trend to significance with regard to the interaction between treatment and time ( $F_{(2,20)} = 2.955$ , MSE = 3.536,  $p = 0.075$ ). Bonferroni *post-hoc* analysis indicated that this trend to significance was predominantly driven by a significant difference in choice accuracy between the isocaloric control group and the Champagne group at 6 weeks ( $p < 0.01$ ).

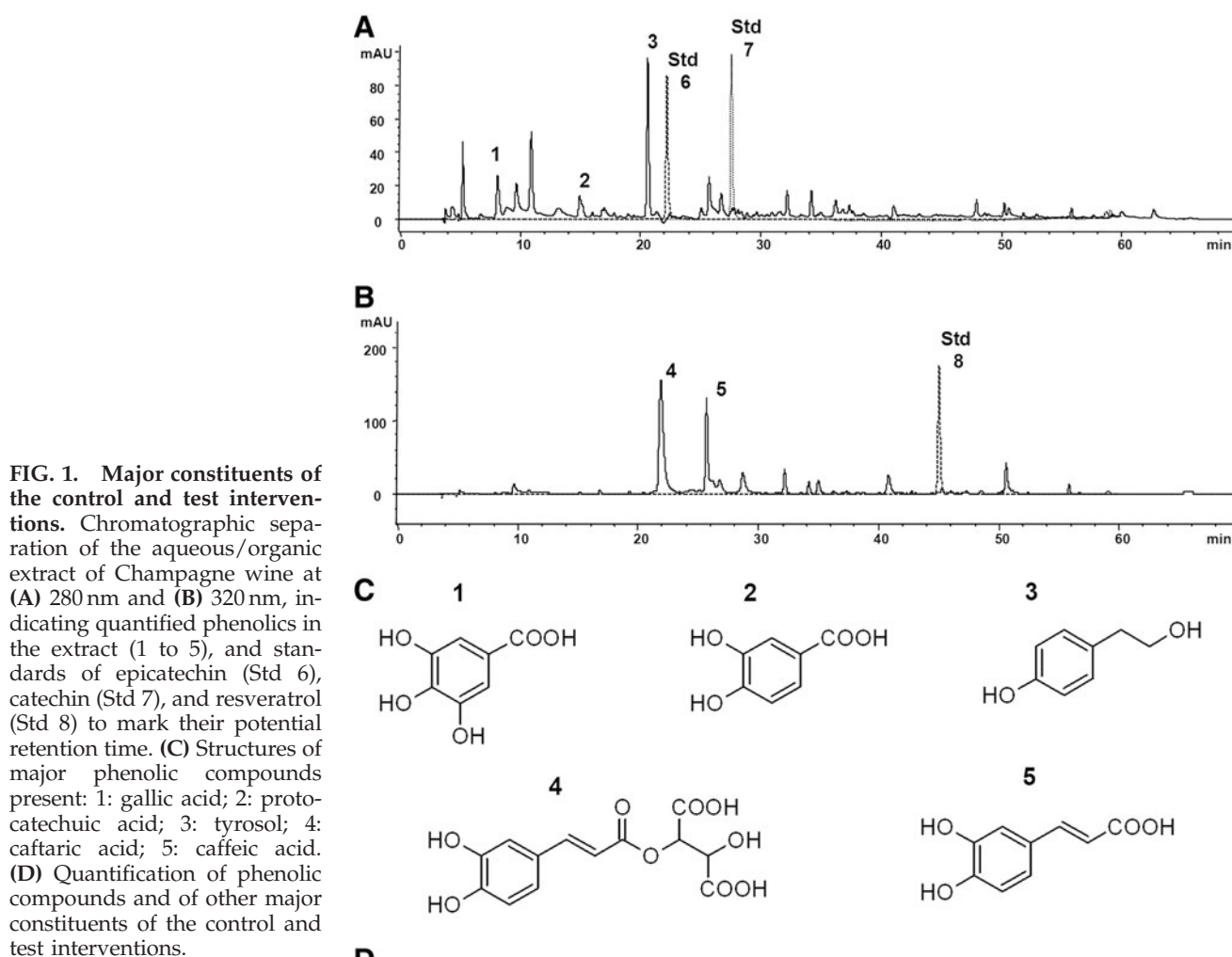
**Motor performance.** A two-way ANOVA with repeated measures indicated that there was no significant affect of the interventions on the distance covered by the animals on

◀ F1

◀ F2

## CHRONIC CHAMPAGNE CONSUMPTION IMPROVES SPATIAL MEMORY

3



**D**  
Analysis of constituents in the three drinks

Constituents	Iso-caloric control drink	Iso-caloric alcohol drink	Champagne wine
<i>phenolic compounds</i>			
gallic acid (mg/L)	-	-	0.66
protocatechuic acid (mg/L)	-	-	0.50
tyrosol (mg/L)	-	-	8.46
caftaric acid (mg/L)	-	-	5.01
caffeic acid (mg/L)	-	-	1.43
total phenolics (mg/L)	-	-	16.06
<i>other constituents</i>			
Fructose (g/L)	3.50	3.50	3.50
Glucose (g/L)	3.00	3.00	3.00
Glycerol (g/L)	6.20	6.20	6.20
Citric acid (g/L)	0.02	0.02	0.02
alcohol (% vol)	-	12.50	12.50

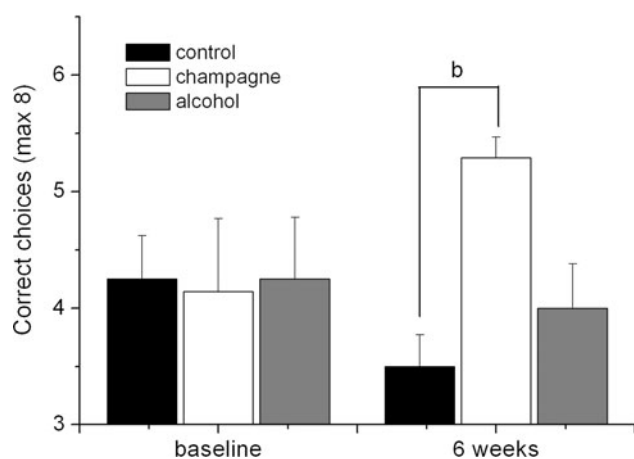
beam-walking tests (time:  $F_{(1,19)}=1.101$ ,  $MSE=0.621$ ,  $p=0.307$ ; treatment:  $F_{(2,19)}=0.855$ ,  $MSE=4.058$ ,  $p=0.441$ ; interaction:  $F_{(2,19)}=1.080$ ,  $MSE=0.609$ ,  $p=0.360$ ) (Fig. 2A). Similarly, the latency time (Fig. 2B) was not significantly affected by the control or Champagne intervention for 6 weeks (time:  $F_{(1,19)}=1.703$ ,  $MSE=33.783$ ,  $p=0.208$ ; treatment:  $F_{(2,19)}=0.441$ ,  $MSE=36.414$ ,  $p=0.650$ ; interaction:  $F_{(2,19)}=0.293$ ,  $MSE=5.814$ ,  $p=0.749$ ). In agreement with this, there were no significant effects of any of the treatments on

calculated walking speed (Fig. 2C; time:  $F_{(1,19)}=1.742$ ,  $MSE=41.637$ ,  $p=0.203$ ; treatments ( $F_{(2,19)}=1.155$ ,  $MSE=52.296$ ,  $p=0.336$ ; interaction:  $F_{(2,19)}=0.690$ ,  $MSE=16.500$ ,  $p=0.514$ ). These data suggest that neither alcohol nor Champagne intervention had an influence on motor performance.

Protein expression array. Forty hippocampal (Fig. 4) and 31 cortical (Fig. 5) proteins related to signal transduction, neuroplasticity, apoptosis, and cell cycle regulation were

◀ F4  
◀ F5

4

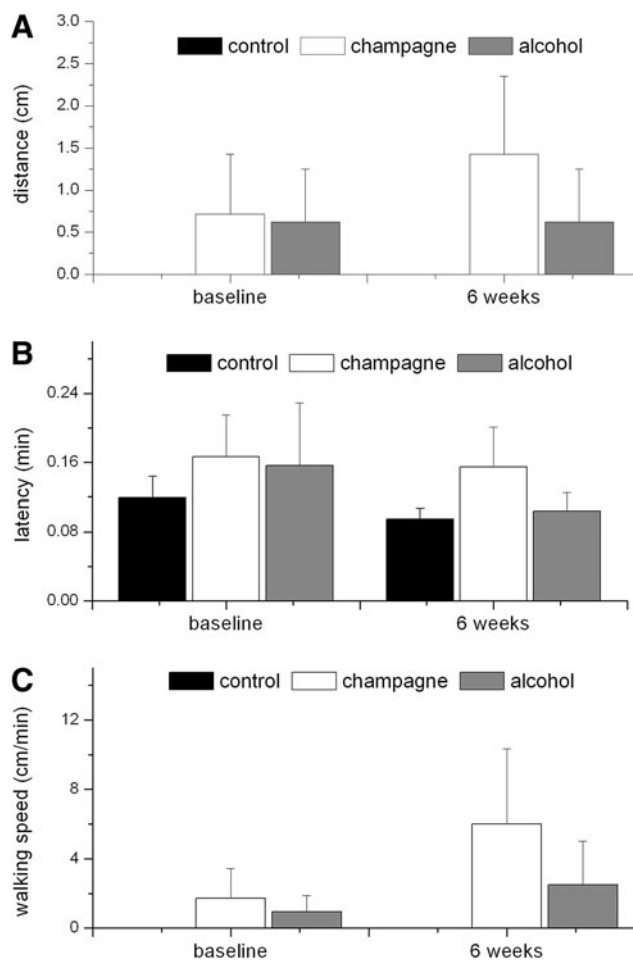


**FIG. 2.** Effect of Champagne supplementation on rat's spatial memory performance measured as choice accuracy (number of correct choices) in a T-maze alternation task. Maximum score is 8 correct choices. Results are presented as means  $\pm$  SEM ( $n=8$ ). Two-way ANOVA indicated a trend to significance on the interaction between treatment and time ( $F_{3,536}=2.955$ ,  $p=0.075$ ), and Bonferroni *post hoc* test indicated a significant effect of Champagne vs control at 6 weeks ( $b=p<0.01$ ). ANOVA, analysis of variance.

significantly modulated ( $p<0.05$ ) after 6 weeks of Champagne intake relative to the isocaloric control. In both the hippocampus and cortex, Champagne intervention modulated a range of proteins involved in the mitogen-activated protein kinase (MAPK) signaling and the epidermal growth factor receptor signaling cascade, such as p38 and phospho-Raf. In addition, in the cortex, Champagne downregulated the expression of some calcium-activated protein kinases (PKC  $\alpha$ , PKC  $\beta$ , and PKC  $\gamma$ ) and phospholipases C and A2. Champagne intervention increased the expression of the myelin-associated enzyme 2',3'-cyclic-nucleotide 3'-phosphodiesterase (CNPase) in the hippocampus, and a range of neuroplasticity-related proteins in both the hippocampus and cortex (dystrophin, plakoglobin, tryptophane hydroxylase, and spectrin), whereas it downregulated NGFR p75 and NMDAR-2a receptors in the cortex only. Finally, Champagne supplementation also led to the modulation of apoptotic proteins (*i.e.*, caspases and Bcl family proteins) and cell cycle/nuclear proteins, including those of the antiapoptotic proteins Bcl-xL and Bcl-2, and cyclin A and Cdc27 in both the hippocampus and cortex. Probe protein array analysis provided several new candidate proteins that were selected based on the expression levels and role in neuronal plasticity (p38, CNPase, dystrophin, and Bcl-xL), along with the previously identified proteins brain-derived neurotrophic factor (BDNF), pro-BDNF, cAMP response-element-binding protein (CREB), mammalian target of rapamycin (mTOR), Erk, JNK, Akt, Arc, and PKA C- $\alpha$  absent in the array, for further evaluation and/or confirmation by western immunoblotting. A complete list of the proteins analyzed with the protein array is presented as a supplementary material (Supplementary Fig. S1: hippocampus, and Supplementary Fig. S2: cortex; Supplementary Data are available online at [www.liebertpub.com/ars](http://www.liebertpub.com/ars)).

**Immunoblotting.** In comparison to the isocaloric and alcohol control interventions, Champagne intervention led to

CORONA ET AL.



**FIG. 3.** Effect of Champagne supplementation on rat's motor skills (stationary-beam scores) in Champagne-supplemented animals. (A) Distance. (B) Latency time. (C) Walking speed. Results are presented as means  $\pm$  SEM ( $n=8$ ). No significant differences were found (two-way ANOVA).

significant increases in the hippocampal levels of phospho-p38, pCREB (Ser<sup>133</sup>) and BDNF ( $p<0.001$ ;  $p<0.05$ ; and  $p<0.001$ , respectively) (Fig. 6A). In addition, there was a significant positive correlation between the hippocampal BDNF levels in individual animal performance on spatial memory tasks ( $R=0.613$ ,  $p<0.01$ ) (Fig. 6B) and between the hippocampal phospho-p38 levels and spatial performance ( $R=0.681$ ,  $p<0.01$ ). Similarly, Champagne intervention led to the increased expression of dystrophin and CNPase ( $p<0.05$  and  $p<0.01$ , respectively) (Fig. 7), with a significant positive correlation existing between spatial memory task performance and hippocampal levels of dystrophin ( $R=0.74$ ,  $p<0.05$ ) and CNPase ( $R=0.529$ ,  $p<0.05$ ).

In contrast, mTOR phosphorylation and Bcl-xL were altered by both the Champagne and alcohol treatments (Fig. 8). Hippocampal levels of Bcl-xL were found to be significantly reduced in animals supplemented with both Champagne ( $p<0.001$ ) and alcohol ( $p<0.01$ ) compared to the control, although to a greater extent in the Champagne group ( $p<0.001$ ). mTOR activation on the other hand was significantly higher in both the Champagne- ( $p<0.001$ ) and alcohol-supplemented animals ( $p<0.05$ ) compared to the isocaloric

AU3

AU7

F6

F7

F8

SF1

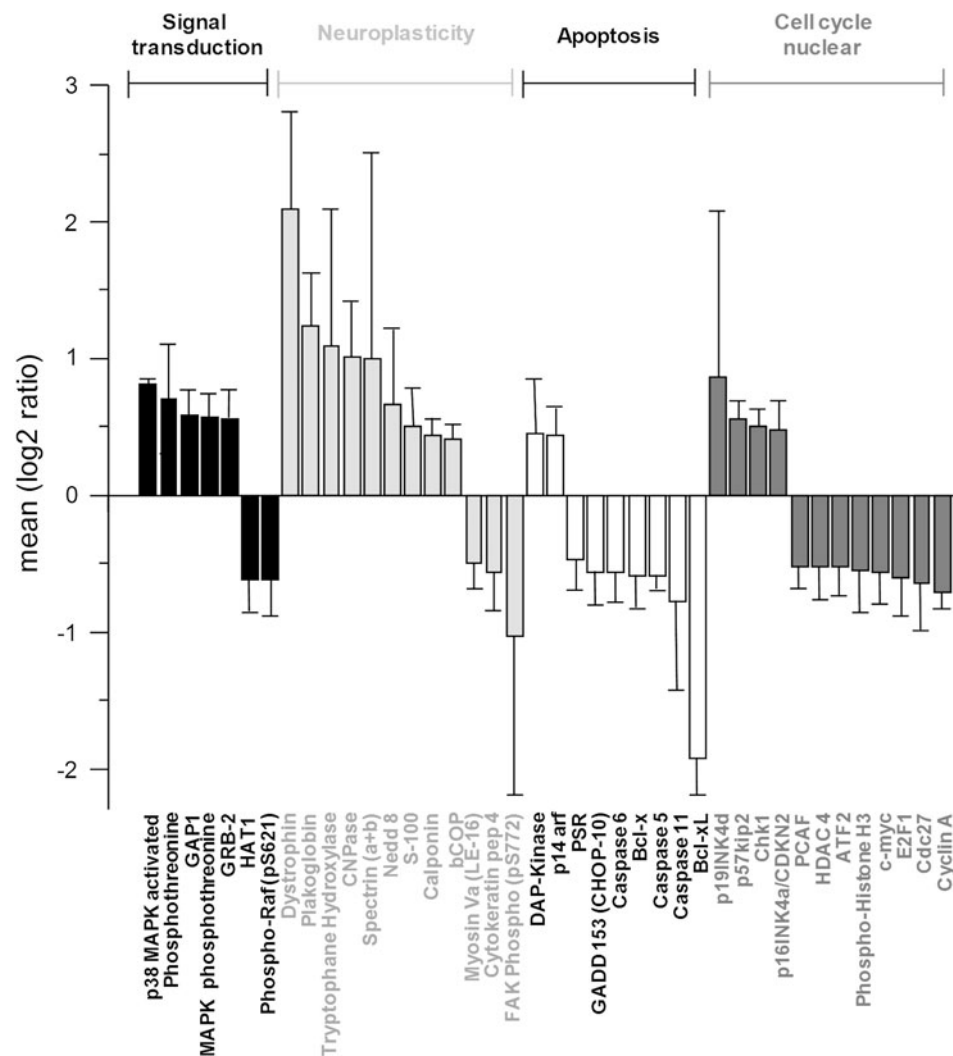
AU4

SF2

## CHRONIC CHAMPAGNE CONSUMPTION IMPROVES SPATIAL MEMORY

5

**FIG. 4. Differentially expressed proteins (antibody array) in the hippocampus between the Champagne- and control-treated animals. Results are presented as mean log<sub>2</sub>-ratios ± SD (*n* = 4). All changes were statistically significant (*p* < 0.05).**



control. Champagne-induced hippocampal changes in the p38, CNPase, dystrophin, and Bcl-xL levels in the hippocampus were in agreement with those observed using antibody arrays (Fig. 4). There were no significant alterations in the activation state, or expression, of, Akt, Arc, Erk, JNK, PKA C- $\alpha$ , and pro-BDNF in the hippocampus in response to either alcohol or Champagne intervention (Table 1).

T1 ▶

With regard to protein expression in the cortex, the effect on mTOR was opposite to that observed in the hippocampus, with both alcohol (*p* < 0.001) and Champagne (*p* < 0.001) intervention leading to significant reductions in mTOR levels relative to the isocaloric control (Fig. 9). However, in a similar manner to that observed in the hippocampus, both alcohol and Champagne evoked significant increases in cortical phospho-CREB (*p* < 0.05). There were no significant alterations in the activation state, or expression, of, Akt, Arc, Bcl-xL, BDNF, CNPase, Erk, JNK, p38, and pro-BDNF in the cortex (Table 1).

F9 ▶

### Discussion

Human clinical trials and animal studies have identified flavonoid-rich foods and beverages as being capable of delaying the onset of age-related cognitive impairment (20, 21,

41, 48, 49, 63, 69). Flavonoids present in such foods have been postulated to evoke protection against cognitive aging through the actions of absorbed flavonoids and their metabolites on neurons and glia, enhancing the existing neuronal function and/or to stimulating neuronal regeneration (20, 26, 49, 63). Although antioxidant mechanisms cannot be excluded (70), recent datasets suggest that such effects are mediated by their ability to modulate neuronal signaling (48, 50, 52), stimulate neurotransmitter release (22), increase cerebrovascular blood flow (14), and even stimulate hippocampal neurogenesis (5). Although a large body of evidence has accumulated for flavonoid-rich foods (26), there is less known regarding the influence of nonflavonoid phenolics on similar behavioral and molecular parameters. In the current study, we show that Champagne wine, which is rich in phenolics, such as gallic acid, protocatechuic acid, tyrosol, caftaric acid and caffeic acid, but essentially lacking in flavonoids, is also capable of enhancing spatial working memory (without altering motor performance) in aged animals. In contrast, moderate alcohol intake failed to induce spatial memory changes. These observations are in agreement with those observed following long-term red wine intake in a similar model of hippocampal-dependent spatial memory (2).

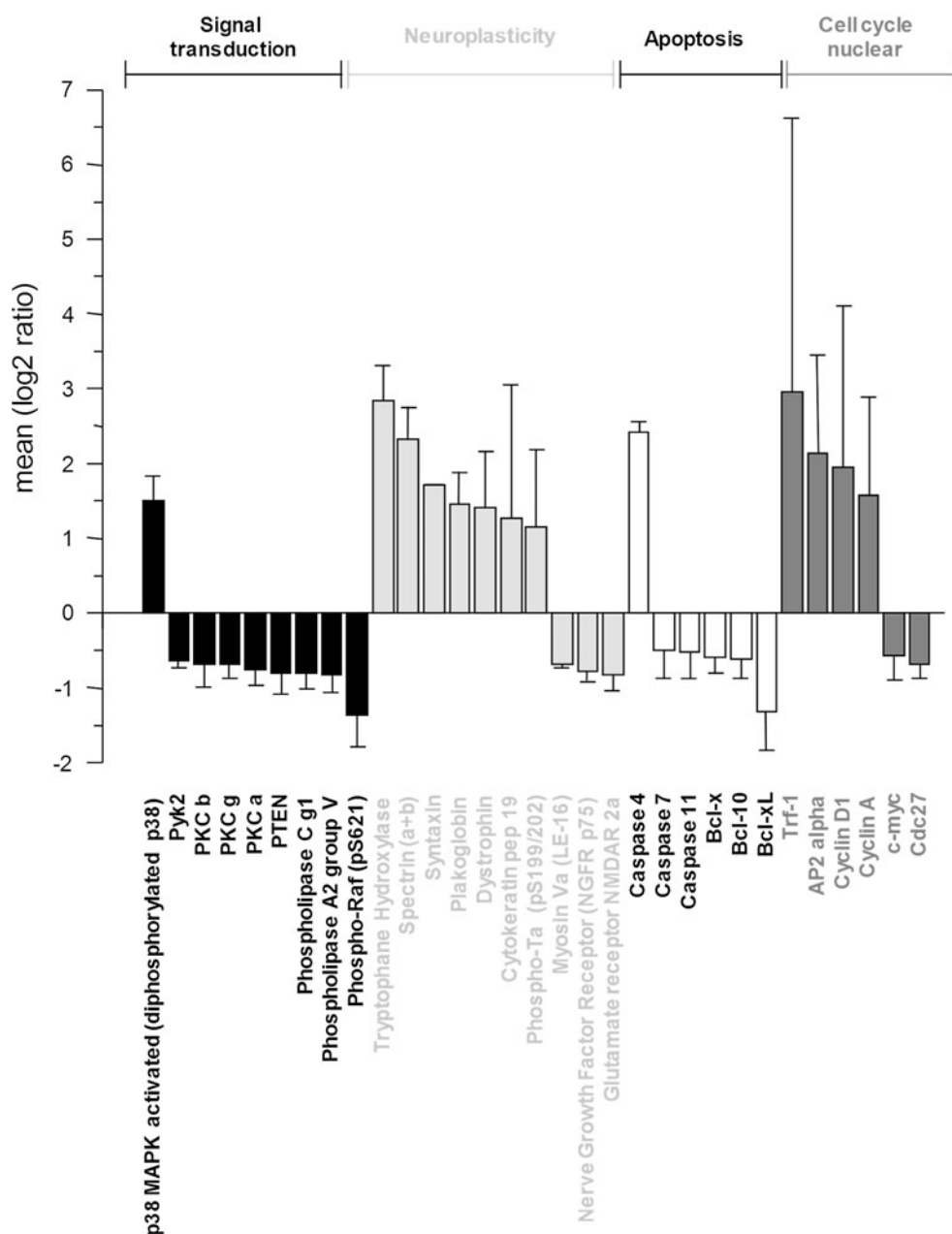


FIG. 5. Differentially expressed proteins (antibody array) in the cortex between the Champagne- and control-treated animals. Results are presented as mean log<sub>2</sub>-ratios  $\pm$  SD ( $n=4$ ). All changes were statistically significant ( $p<0.05$ ).

The effects of Champagne on spatial memory were paralleled by a number of changes in the hippocampal and cortical protein expression, which may underpin the performance on spatial memory tasks. Perhaps, most notably, dystrophin and CNPase were modulated by Champagne supplementation, but not alcohol. CNPase (2',3'-cyclic nucleotide 3'-phosphodiesterase) is a myelin-associated enzyme that constitutes around 4% of total central nervous system myelin protein, and is thought to undergo significant age-associated changes (17), and is reduced in Alzheimer's disease and Down's syndrome patients (66). Further, Champagne-induced hippocampal increases in the cytoskeletal associated protein, dystrophin, may be beneficial, as a lack of this protein in the hippocampus has been associated with impaired cognitive function (35), spatial memory (59), and long-term potentiation (58). Indeed, patients lacking dystrophin in the

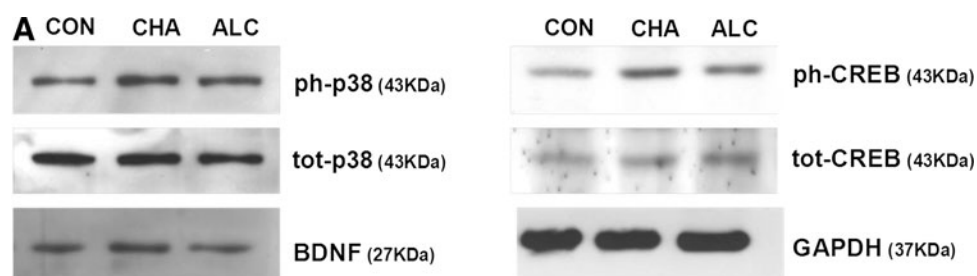
hippocampus and neocortex (due to mutation in the dystrophin gene) display a range of cognitive deficits (1). Intervention with the phenolic-rich Champagne also led to the increased expression of a range of other cytoskeletal proteins, including plakoglobin ( $\gamma$ -catenin), spectrin, calponin, cyto-keratin pep4 and pep19, myosin Va, and focal adhesion kinase (FAK). Such proteins facilitate complex neuronal network formation in the brain and operate with neuronal membrane proteins (*e.g.*, ion channels, scaffolding proteins, and adaptor proteins) at the sites of synaptic contacts to regulate synaptogenesis and coordinate synaptic strength (16, 38).

BDNF, a major regulator of synaptic transmission and plasticity at adult synapses (31), has previously been shown to partly mediate flavonoid-induced improvement in spatial memory through the ERK/Akt-CREB-BDNF pathway (42, 69). We show that phenolics present in Champagne also

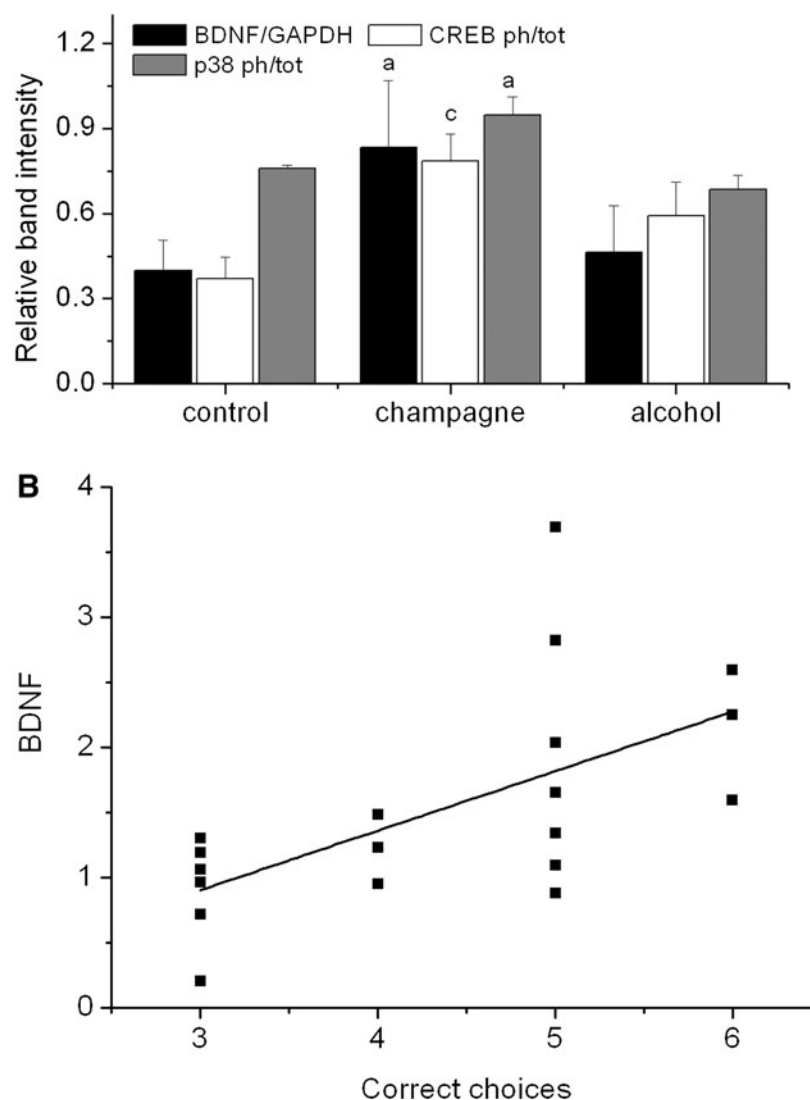


## CHRONIC CHAMPAGNE CONSUMPTION IMPROVES SPATIAL MEMORY

7

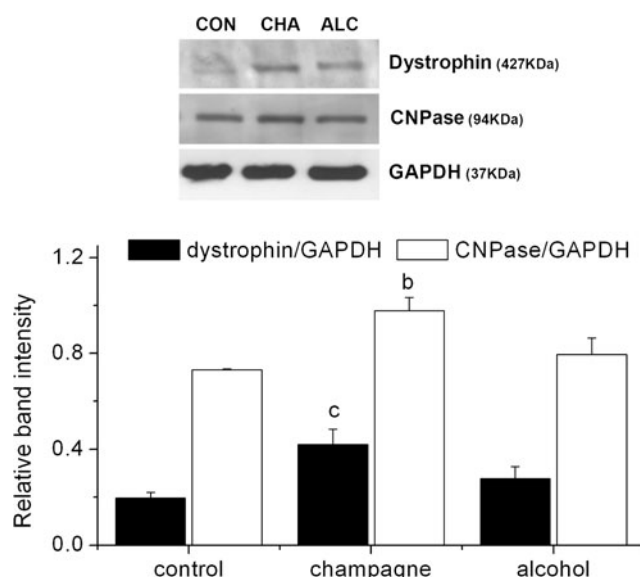


**FIG. 6. Immunoblotting analysis of proteins extracted from the hippocampus.** (A) Crude lysates (20–40  $\mu$ g protein) were immunoblotted with antibodies that specifically recognize phospho-p38, total-p38, phospho-CREB, total-CREB, BDNF, and GAPDH. Results (phospho-/total ratio for p38 and CREB; protein/GAPDH ratio for BDNF) are presented as means  $\pm$  SEM ( $n \geq 6$ ).  $a = p < 0.001$ ;  $c = p < 0.05$  represent significant differences vs control (one-way ANOVA). (B) Correlation between choice accuracy in spatial memory task and hippocampal BDNF protein levels, after 6 weeks of dietary interventions, ( $n = 19$ ;  $r = 0.613$ ;  $p < 0.01$ ). BDNF, brain-derived neurotrophic factor; CREB, cAMP response element-binding protein.



increase the BDNF and CREB levels in the hippocampus and a number of other neuroplastic proteins, notably dystrophin, plakoglobin, tryptophane hydroxylase, and CNPase. CREB is well known to be involved in memory and learning processes (53), *via* its selective activation of numerous downstream genes, including *BDNF* (3), and the CREB/BDNF pathway plays a critical role in synaptic plasticity and memory consolidation (34). In contrast to previous findings with flavonoid-rich interventions, we observed no significant modulation of ERK1/2 or Akt by Champagne intervention, suggesting that BDNF is not regulated in this manner. Rather,

phenolic-induced BDNF expression may be regulated through p38 signaling in the hippocampus, leading to a decrease in the ERK/p38 activity ratio and the direct inhibition of raf-1 by p38 (18). Indeed, raf-1 was significantly down-regulated by Champagne intervention, together with a number of other proteins connected to raf-1 in the hippocampus (p38, ATF2, GADD 153, p57kip2, Cdc27, Cyclin A, E2F1, PCAF, c-myc, GRB2, FAK, and spectrin) and in the cortex (p38, Cyclin A, Cyclin D1, c-myc, caspase 7, NGRF p75, PTEN, phospholipase C g1 and A2 group V, PKC a, b, and g, NMDAR 2a, Pyk2, and Tau), as indicated by STRING



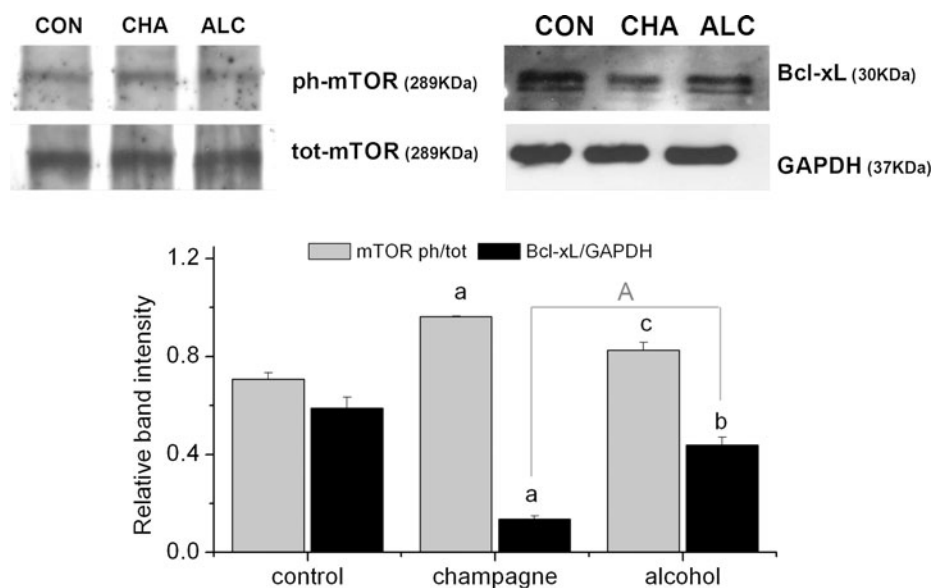
**FIG. 7. Immunoblotting analysis of proteins extracted from the hippocampus.** Crude lysates (20–40  $\mu$ g protein) were immunoblotted with antibodies that specifically recognize dystrophin, CNPase, and GAPDH. Results (protein/GAPDH ratios) are presented as means  $\pm$  SEM ( $n \geq 6$ ).  $b = p < 0.01$ ; and  $c = p < 0.05$  represent significant differences vs control (one-way ANOVA). CNPase, 2',3'-cyclic-nucleotide 3'-phosphodiesterase.

functional protein association networks (19). Further, the observed increases in p38 activation are in agreement with previous findings, showing that p38 activity may mediate BDNF synthesis in the rat hippocampus (23).

Further, unlike flavonoids, Champagne phenolics did not specifically regulate Akt-mTOR signaling, although alcohol treatment did appear to increase in the activation status of mTOR, a protein that regulates survival, differentiation, and development of neurons and is crucial for synaptic plasticity, learning, and memory formation in the adult brain (54),

something which agrees with previous datasets (29). Similarly, reductions in the hippocampal levels of Bcl-xL levels were reduced by both Champagne and alcohol, suggesting that alcohol intake itself may play a role in apoptotic regulation in the brain (13). A number of other apoptotic proteins were found to be significantly downregulated by Champagne in the hippocampus (Bcl-xL, Bcl-x, caspases 5, 6, and 11, PSR, and GADD 153) and in the cortex (Bcl-xL, Bcl-x, Bcl-10, and caspases 7 and 11), although it is unclear whether alcohol alone would also mediate similar reductions. Antiapoptotic proteins such as Bcl-xL and other members of the Bcl-2 family have been implicated in the selective neuronal loss observed in AD (47) and have been found to be upregulated in the Alzheimer brains (24).

In summary, the potential of Champagne to beneficially influence spatial memory appears to be mediated by its ability to induce a number of changes in hippocampal and cortical protein expression, which occur in parallel to behavioral effects. Such effects on protein expression may result *via* the direct actions of individual phenolics such as tyrosol, caffeic acid, and their metabolites on hippocampal and cortical neurons/glia after their uptake into the brain, or *via* the synergistic effects of these phenolics along with other Champagne wine components. Although we did not observe this directly, previous data support the potential for such phenolics to undergo transfer across the blood-brain barrier (BBB) (11, 44). While the ability of flavonoids to cross the BBB is believed to be dependent on lipophilicity, small phenolics may transverse the BBB *via* amino acid transporters, such as have been reported for 4-ethylcatechol (33). Further, caffeic acid shares structural similarities with L-3,4-dihydroxyphenylalanine and, as such, may undergo BBB transport *via* catecholamine transporter systems. Together, our data indicate that moderate Champagne intake and phenolic acid intake in general may be beneficial in counteracting memory impairments associated with aging, a finding that broadly supports human epidemiological data (25, 27, 28, 37). Questions remain as to whether such an intervention would have a similar efficacy in younger animals, and how this compares to



**FIG. 8. Immunoblotting analysis of proteins extracted from hippocampus.** Crude lysates (20–40  $\mu$ g protein) were immunoblotted with antibodies that specifically recognize phospho-mTOR, total-mTOR, Bcl-xL, and GAPDH. Results (phospho-/total ratio for mTOR; protein/GAPDH ratio for Bcl-xL) are presented as means  $\pm$  SEM ( $n \geq 3$ ).  $a = p < 0.001$ ;  $b = p < 0.01$ ; and  $c = p < 0.05$  represent significant differences vs control;  $a = p < 0.001$  represent significant differences versus alcohol (one-way ANOVA). mTOR, mammalian target of rapamycin.

## CHRONIC CHAMPAGNE CONSUMPTION IMPROVES SPATIAL MEMORY

9

TABLE 1. IMMUNOBLOTTING ANALYSIS OF PROTEINS EXTRACTED FROM THE HIPPOCAMPUS AND CORTEX

	Control		Champagne		Alcohol	
	Mean	SEM	Mean	SEM	Mean	SEM
<i>Hippocampus</i>						
Akt ph/tot	0.581	0.023	0.535	0.009	0.543	0.004
Arc/GAPDH	0.722	0.130	0.684	0.214	0.803	0.059
Erk1 ph/tot	0.271	0.009	0.260	0.016	0.248	0.019
Erk2 ph/tot	0.116	0.003	0.120	0.013	0.101	0.008
JNK 1 ph/tot	0.949	0.064	1.043	0.111	0.853	0.010
JNK 2/3 ph/tot	0.672	0.035	0.666	0.057	0.598	0.043
PKA C- $\alpha$ ph/tot	0.022	0.015	0.017	0.008	0.044	0.015
Pro-BDNF/GAPDH	0.372	0.050	0.517	0.048	0.284	0.081
<i>Cortex</i>						
Akt ph/tot	0.782	0.011	0.734	0.024	0.732	0.025
Arc/GAPDH	0.577	0.050	0.648	0.010	0.598	0.028
Bcl-xL/GAPDH	0.536	0.081	0.680	0.077	0.693	0.042
BDNF/GAPDH	1.000	0.034	0.995	0.075	0.803	0.089
CNPase/GAPDH ratio	1.413	0.144	1.915	0.183	1.662	0.064
Erk1 ph/tot	0.955	0.177	0.731	0.043	0.845	0.041
Erk2 ph/tot	0.682	0.120	0.586	0.032	0.673	0.024
JNK 1 ph/tot	0.880	0.014	0.917	0.013	0.921	0.012
JNK 2/3 ph/tot	0.757	0.030	0.744	0.107	0.757	0.013
p38 ph/tot	0.732	0.077	0.903	0.002	0.593	0.086
Pro-BDNF/GAPDH	0.500	0.032	0.586	0.050	0.302	0.109

Statistical analysis (one-way ANOVA) was performed. Differences were all nonsignificant ( $p > 0.05$ ).

our observations in old animals. However, phase-I and II metabolic differences that occur with age may influence the circulating levels of phenolics and their metabolites, and thus spatial memory improvements may also be influenced.

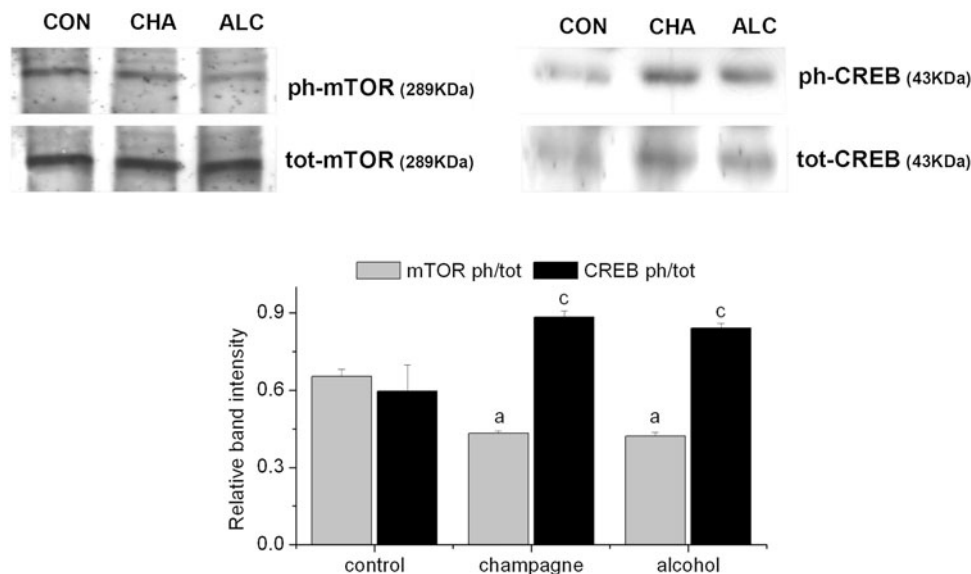
## Materials and Methods

### Materials

Gallic acid, protocatechuic acid, caffeic acid, Bradford reagent, panorama antibody array Cell Signaling Kit, CellLytic<sup>TM</sup> MT Cell Lysis Reagent, and HRP-conjugated goat anti-rabbit and anti-mouse secondary antibodies were obtained from

Sigma. Caftaric acid was obtained from Apin Chemicals. Tyrosol was purchased from Extrasynthese. PhosSTOP phosphatase inhibitors and Complete Miniprotease inhibitors were obtained from Roche. Precision Plus Protein Western C Standards and Precision Protein StrepTactin-HRP conjugate were purchased from Biorad. Primary antibodies used were anti-BDNF (1:200) and anti-pro-BDNF (1:200) from Millipore; anti-phospho-p38 Thr180/Tyr182 (1:1000), anti-total-p38 (1:1000), anti-phospho-CREB Ser133 (1:1000), anti-total-CREB (1:1000), anti-phospho-Erk1/2 Thr202/Tyr204 (1:2000), anti-total-Erk1/2 (1:2000), anti-phospho-Akt Ser473 (1:1000), anti-total-Akt (1:1000), anti-phospho-JNK Thr183/Tyr185

**FIG. 9. Immunoblotting analysis of proteins extracted from the cortex.** Crude cortical lysates (20–40  $\mu$ g protein) were immunoblotted with antibodies that specifically recognize phospho-mTOR, total-mTOR, phospho-CREB, and total CREB. Results (phospho-/total ratio for mTOR; protein/GAPDH ratio for CREB) are presented as means  $\pm$  SEM ( $n \geq 3$ ).  $a = p < 0.001$  and  $c = p < 0.05$  represent significant differences versus control (one-way ANOVA).



(1:1000), anti-total-JNK (1:1000), anti-Arc/Arg 3.1 C-7 (1:1000), anti-phospho-mTOR Ser2448 (1:1000), and anti-mTOR (1:1000) from New England Biolabs; anti-phospho-PKA C- $\alpha$  (1:1000), anti-total-PKA C- $\alpha$  (1:1000), anti CNPase (1:1000), anti-dystrophin (1:500), and anti-Bcl-xL (1:500) from Sigma. ECL reagent and hyperfilm-ECL were purchased from Amersham Biosciences. All other reagents were obtained from Sigma or Merck.

#### *Extraction and quantification of polyphenols from Champagne wine*

Champagne extracts were prepared using Champagne wine derived from both Chardonnay and Pinot Noir and Pinot Meunier grapes as reported previously (65). Briefly, 375 ml of Champagne was degassed, filtered, concentrated under vacuum, and extracted with ethyl acetate. The organic phase was separated from the aqueous phase and concentrated under reduced pressure to yield a brown aromatic residue (yield = 1g/375 ml). The obtained fraction was dissolved in methanol, filtered, and analyzed by HPLC. HPLC analysis was carried out with an Agilent 1100 series liquid chromatograph equipped with a diode array detector linked to the HP ChemStation Software system. Samples were analyzed by reverse-phase HPLC using a NovaPak C18 column (4.6  $\times$  250 mm, 4- $\mu$ m particle size) fitted with a guard column C18 NovaPak from Waters. The temperature of the column was maintained at 30°C. The mobile phases consisted of a mixture of aqueous methanol 5% in 0.1% hydrochloric acid 5 M (A) and a mixture of aqueous acetonitrile 50% in 0.1% hydrochloric acid 5 M (B) and were pumped through the column at 0.7 ml/min. The following gradient system was used (min/% B): 0/5, 5/5, 40/50, 55/100, 59.9/100, and 60/5, with 10-min post-run. The eluent was monitored by photodiode array detection at 280 and 320 nm, and spectra of products were obtained over the 200–600-nm range. Calibration curves of the phenolic compounds were constructed using authentic standards (0.1–100 mg/ml), and in each case were found to be linear with correlation coefficients of .0.995. All data were analyzed using ChemStation software.

**Animals and supplementation.** All procedures were followed according to the specifications of the United Kingdom Animals (Scientific Procedures) Act, 1986, and to the national guidelines for the care and use of animals. Three groups of adult, male Wistar rats ( $n=8$  per group; housed in cages each containing 2 rats) were kept under controlled temperature (22°C  $\pm$  1°C) and humidity (50%  $\pm$  10%), and on a 12:12 light-dark cycle (lights off 10:00 h). All rats were 15 months old at the beginning of the trial. Animals were pseudorandomly assigned to 3 groups based on their baseline spatial working memory correct-choice scores. Once allocated to a group, animals were fed daily with Champagne, an isocaloric control drink, or an isocaloric drink containing alcohol (Fig. 1D). The isocaloric control was matched for macro- and micronutrient content, notably glycerol, fructose, glucose, and citric acid content, and was dissolved in carbonated water. The alcohol control was similarly matched, but also contained alcohol (12.5% vol). The Champagne wine used in the study also contained phenolic compounds (gallic acid, protocatechuic acid, tyrosol, caftaric acid, and caffeic acid). Champagne and alcohol supplementation (1.78 ml/kg bw) was approximately

equivalent to one 125-ml intake for a 70-Kg human and was adjusted according to each animal's body weight (approximate range 450–480 g). Alternatively, if we calculate the dose according to the Human Equivalent Dose (HED) formula: HED (mg/kg) = animal dose (mg/kg) \* ([animal weight (kg)/human weight (kg)]<sup>0.33</sup> (40)), the Champagne dose utilized in our experiments is equivalent to 0.34 mg kg<sup>-1</sup> day<sup>-1</sup> in humans (23.8 mg Champagne in a 70-kg person per day). This equates to a lower intake equivalent to 1.3 glasses of Champagne (125 ml) per week in humans. To control daily intake of the intervention diets, the three drinks were prepared freshly each day and administered in the form of a mash, by mixing the test solutions with a small amount (8 g/10 ml) of powdered standard diet (RM3; Special Diets Services), and the correct amount given to each rat based on the body weight. At the end of the spatial memory trials, animals were sacrificed and the brains removed, the hippocampal and cortical regions dissected, snap-frozen in liquid nitrogen, and stored at -80°C until analysis.

**Spatial working memory.** Spatial working memory performance was assessed using a cross-maze apparatus (36), which is a commonly used paradigm to evaluate spatial learning, working memory, and reference memory performance in rodents (46, 69). All rats were fasted overnight before the procedure to provide sufficient motivation to ensure a high level of response during testing. Extra maze cues (laboratory furniture, lights, and several prominent visual features on the walls) were held constant throughout the experiment. Rats were given 2-week pretraining (habituation) that they ran reliably from the start arm to locate the reward pellets in both goal arms of the maze. This was followed by 6 weeks of shaping sessions (each consisting of six trials) before initiation of the supplementation regimes. During each shaping trial, rats were trained to enter an open goal arm and collect a reward pellet (entry to the alternate other goal arm was restricted). Across each shaping session, the open goal arm varied between trials according to a pseudorandom design. After completion of the shaping sessions, dietary supplementation and testing sessions were started. During the testing phase, each animal received eight trials per test session, with each consisting of a sample phase and a choice phase. During the sample phase, rats were placed in the start arm and allowed access only one goal arm to recover a food reward. Once the reward pellet had been collected, animals were removed and returned to the start arm for 10 s. During the choice phase, both goal arms were accessible, and animals were allowed a free choice between the two, with correct choice responses recorded for animals entering arm not visited during the sample phase. An animal was deemed to have selected an arm when it had placed a hind foot within the confines of the arm correct arm (retracing was measured as a failure on the task). Correct choices were rewarded with a food reward, whereas incorrect arm choices meant the animal was returned to its home cage. For 50% of the choice phases, the rat was placed in the alternate start arm opposite to the normal start arm. For each trial, accuracy and time taken to make a choice were measured. The maze was cleaned with 50% ethanol solution between trials to remove any olfactory clues. Each test session contained a pseudorandom sequence of correct choices between the two arms, as well as a pseudorandom sequence for the start arm during the choice phase.

Rats were given 2 test sessions on the cross-maze, one session administered immediately before supplementation (baseline) and one administered at 6 weeks. Each group of aged animals was pseudorandomly assigned before the intervention based on the baseline correct-choice scores.

**Stationary-beam test.** The motor skills of the animals during Champagne supplementation were tested on a stationary beam (55) at baseline and at the end of the intervention (6 weeks). The dynamic equilibrium was tested on a beam consisting of a scale (150 cm, 3-cm diameter) located 40 cm above a soft carpet. At the beginning of the experiment, the rat was placed on the middle of the beam, its body axis perpendicular to the beam's longitudinal axis. The distance covered and latency times before falling were recorded, and the walking speed was calculated. The trial was stopped when the animal fell or 3 min had elapsed.

**Antibody array.** The Panorama antibody array Cell Signaling Kit (Sigma-Aldrich) was used, which contains 224 different antibodies spotted in duplicate on nitrocellulose glass slides, and represents proteins involved in biological pathways such as apoptosis, cell cycle, nuclear proteins, neurobiology, cytoskeleton, and signal transduction. Three biological replicates were used for the hippocampus region and two biological replicates for the cortex region. Statistical analysis was conducted on biological replicates, and significantly modulated protein expression in the hippocampus and in the cortex is reported in Supplementary Tables S1 and S2, respectively. Proteins from both the brain regions of the Champagne-treated and control-treated animals were extracted, purified, labeled with Cy-fluorescent dyes, hybridized to microarrays (at concentration of 5  $\mu\text{g}/\text{ml}$  of each labeled target), and washed according to the protocols provided by the manufacturer. Briefly, the protein extracts were prepared using the extraction buffer provided in the kit, and the protein concentration was determined in the supernatant by the Bradford method. One mg of protein extract from each sample was labeled with Cy5 or Cy3, according to the manufacturer's instructions. Free, nonincorporated Cy3 and Cy5 dyes were separated by applying the labeled extracts on the SigmaSpin Post-Reaction Clean-Up Columns. The dye-to-protein molar ratio (D/P) was calculated, and only samples having  $D/P > 2$  were used. An equal amount of labeled protein of both extracts (5  $\mu\text{g}/\text{ml}$ ) was incubated on the microarray slide for 30 min; all washes were done in PBS-Tween 0.05%. The microarray slides were scanned on a GenePix 4200 Professional scanner (Molecular Devices), with laser power reduced to 25% and PMT settings manually adjusted to avoid saturated pixels in the experimental spots, and the resulted images were analyzed with GenePixPro 6 software (Molecular Devices). Spot intensities were local background-adjusted, and spots with negative values were removed from further analysis. For the remaining spots, resulted intensities were averaged for replicates, treatment-to-control ratios calculated,  $\log_2$ -transformed, and normalized to median.

**Western immunoblotting.** The dissected brain regions were homogenized on ice with a glass homogenizer using CellLytic™ MT Cell Lysis Reagent (Sigma) containing cOmplete Mini protease inhibitors and PhosSTOP phosphatase inhibitors. The homogenates were left on ice for 45 min before

centrifugation at 4000  $g$  for 5 min at 4°C to remove unbroken cell debris and nuclei. The protein concentration in the supernatants was determined by the Bradford protein assay. Samples were incubated for 2 min at 95°C in boiling buffer (final concentration 62.5 mM Tris, pH 6.8, 2% SDS, 5% 2-mercaptoethanol, 10% glycerol, and 0.0025% bromophenol blue). Boiled samples (20–60  $\mu\text{g}/\text{lane}$ ) and protein standards were run on 9%–12% SDS-polyacrylamide gels, and proteins were transferred to nitrocellulose membranes (Hybond-ECL; Amersham) by semidry electroblotting (1.5 mA/cm<sup>2</sup>). The nitrocellulose membrane was then incubated in a blocking buffer (20 mM Tris, pH 7.5, 150 mM NaCl; TBS) containing 4% (w/v) skimmed milk powder for 45 min at room temperature followed by 2  $\times$  5-min washes in TBS supplemented with 0.05% (v/v) Tween 20 (TTBS). Blots were then incubated with the primary antibodies of interest (1:200–1:2000 dilution) in TTBS containing 1% (w/v) skimmed milk powder (antibody buffer) overnight at 4°C on a three-dimensional rocking table. The blots were washed 2  $\times$  10 min in TTBS and incubated with secondary anti-rabbit or anti-mouse IgG conjugated to HRP (1:1000 dilution) and Precision Protein StrepTactin–HRP conjugate (1:10,000 dilution) for 45 min. Finally, the blots were washed 2  $\times$  10 min in TTBS rinsed in TBS and exposed to ECL reagent for 1–2 min and developed. The bands were analyzed using Bio-Rad Quantity One 1-D Analysis software. Molecular weights of the bands were calculated from comparison with prestained molecular-weight markers that were run in parallel with the samples. Relative band intensities were calculated as a ratio of the phosphorylated protein to total protein in the case of CREB, p38, and mTOR. For BDNF, dystrophin, CNPase, and Bcl-xL, the relative band intensity was calculated in comparison to the GAPDH levels.

**Statistics.** All behavioral data (means  $\pm$  SEM,  $n=8$ ) were subjected to two-way ANOVA for repeated measures with the diet group (control, alcohol, and Champagne) and time (0 and 6 weeks) as main factors, followed by a Bonferroni *post hoc* test to examine the differences between individual treatments (GraphPad Prism 5). For the microarray data (means  $\pm$  SEM,  $n=4$  for hippocampus,  $n=4$  for cortex), to evaluate the difference in protein expression between the Champagne-treated and isocaloric control-treated samples, we used Rank Product Test (4), as implemented in MeV 4.6 microarray data analysis software (43), with a cutoff of  $\log_2$ -ratio more than 0.4 or less than  $-0.4$  (more than 1.3-fold change) and  $p < 0.05$ . For the western immunoblotting data (means  $\pm$  SEM,  $n \geq 3$ ), the results were statistically evaluated by one-way ANOVA, followed by a Student–Newman–Keuls *post hoc* t-test (GraphPad Prism 5). Significant changes are indicated as follows:  $a=p < 0.001$ ;  $b=p < 0.01$ ;  $c=p < 0.05$ . Correlations between animal performance on spatial memory tasks and protein levels in the brain were calculated using the Pearson product moment correlation coefficient and the associated  $p$  value.

#### Acknowledgments

The authors wish to thank Dr. Viacheslav Bolshakov for his help with the protein array assays.

#### Author Disclosure Statement

No competing financial interests exist.



ST1  
ST2  
AU5

## References

1. Anderson JL, Head SI, Rae C, and Morley JW. Brain function in Duchenne muscular dystrophy. *Brain* 125: 4–13, 2002.
2. Assuncao M, Santos-Marques MJ, de Freitas V, Carvalho F, Andrade JP, Lukoyanov NV, and Paula-Barbosa MM. Red wine antioxidants protect hippocampal neurons against ethanol-induced damage: a biochemical, morphological and behavioral study. *Neuroscience* 146: 1581–1592, 2007.
3. Bramham CR and Messaoudi E. BDNF function in adult synaptic plasticity: the synaptic consolidation hypothesis. *Prog Neurobiol* 76: 99–125, 2005.
4. Breitling R, Armengaud P, Amtmann A, and Herzyk P. Rank products: a simple, yet powerful, new method to detect differentially regulated genes in replicated microarray experiments. *FEBS Lett* 573: 83–92, 2004.
5. Casadesus G, Shukitt-Hale B, Stellwagen HM, Zhu X, Lee HG, Smith MA, and Joseph JA. Modulation of hippocampal plasticity and cognitive behavior by short-term blueberry supplementation in aged rats. *Nutr Neurosci* 7: 309–316, 2004.
6. Chamkha M, Cathala B, Cheynier V, and Douillard R. Phenolic composition of champagnes from Chardonnay and Pinot Noir vintages. *J Agric Food Chem* 51: 3179–3184, 2003.
7. Chan SL, Capdeville-Atkinson C, and Atkinson J. Red wine polyphenols improve endothelium-dependent dilation in rat cerebral arterioles. *J Cardiovasc Pharmacol* 51: 553–558, 2008.
8. Chan SL, Tabellion A, Bagrel D, Perrin-Sarrado C, Capdeville-Atkinson C, and Atkinson J. Impact of chronic treatment with red wine polyphenols (RWP) on cerebral arterioles in the spontaneous hypertensive rat. *J Cardiovasc Pharmacol* 51: 304–310, 2008.
9. Constant J. Alcohol, ischemic heart disease, and the French paradox. *Coron Artery Dis* 8: 645–649, 1997.
10. Corder R. Red wine, chocolate and vascular health: developing the evidence base. *Heart* 94: 821–823, 2008.
11. D'Angelo S, Manna C, Migliardi V, Mazzoni O, Morrica P, Capasso G, Pontoni G, Galletti P, and Zappia V. Pharmacokinetics and metabolism of hydroxytyrosol, a natural antioxidant from olive oil. *Drug Metab Dispos* 29: 1492–1498, 2001.
12. Dal-Ros S, Bronner C, Auger C, and Schini-Kerth VB. Red wine polyphenols improve an established aging-related endothelial dysfunction in the mesenteric artery of middle-aged rats: role of oxidative stress. *Biochem Biophys Res Commun* 419: 381–387, 2012.
13. Freund G. Apoptosis and gene expression: perspectives on alcohol-induced brain damage. *Alcohol* 11: 385–387, 1994.
14. Ghosh D and Scheepens A. Vascular action of polyphenols. *Mol Nutr Food Res* 53: 322–331, 2009.
15. Glisky EL. Changes in Cognitive Function in Human Aging. In: *Brain Aging: Models, Methods, and Mechanisms*, edited by Riddle DR. Boca Raton (FL): CRC Press, 2007.
16. Goda Y. Cadherins communicate structural plasticity of presynaptic and postsynaptic terminals. *Neuron* 35: 1–3, 2002.
17. Hayakawa N, Kato H, and Araki T. Age-related changes of astrocytes, oligodendrocytes and microglia in the mouse hippocampal CA1 sector. *Mech Ageing Dev* 128: 311–316, 2007.
18. Hutchison MR. BDNF Alters ERK/p38 MAPK Activity Ratios to Promote Differentiation in Growth Plate Chondrocytes. *Mol Endocrinol* 26: 1406–1416, 2012.
19. Jensen LJ, Kuhn M, Stark M, Chaffron S, Creevey C, Muller J, Doerks T, Julien P, Roth A, Simonovic M, Bork P, and von Mering C. STRING 8—a global view on proteins and their functional interactions in 630 organisms. *Nucleic Acids Res* 37: D412–D416, 2009.
20. Joseph J, Cole G, Head E, and Ingram D. Nutrition, brain aging, and neurodegeneration. *J Neurosci* 29: 12795–12801, 2009.
21. Joseph JA, Shukitt-Hale B, and Casadesus G. Reversing the deleterious effects of aging on neuronal communication and behavior: beneficial properties of fruit polyphenolic compounds. *Am J Clin Nutr* 81: 313S–316S, 2005.
22. Joseph JA, Shukitt-Hale B, Denisova NA, Bielinski D, Martin A, McEwen JJ, and Bickford PC. Reversals of age-related declines in neuronal signal transduction, cognitive, and motor behavioral deficits with blueberry, spinach, or strawberry dietary supplementation. *J Neurosci* 19: 8114–8121, 1999.
23. Katoh-Semba R, Kaneko R, Kitajima S, Tsuzuki M, Ichisaka S, Hata Y, Yamada H, Miyazaki N, Takahashi Y, and Kato K. Activation of p38 mitogen-activated protein kinase is required for *in vivo* brain-derived neurotrophic factor production in the rat hippocampus. *Neuroscience* 163: 352–361, 2009.
24. Kitamura Y, Shimohama S, Kamoshima W, Ota T, Matsuoka Y, Nomura Y, Smith MA, Perry G, Whitehouse PJ, and Taniguchi T. Alteration of proteins regulating apoptosis, Bcl-2, Bcl-x, Bax, Bak, Bad, ICH-1 and CPP32, in Alzheimer's disease. *Brain Res* 780: 260–269, 1998.
25. Krenz M and Korthuis RJ. Moderate ethanol ingestion and cardiovascular protection: from epidemiologic associations to cellular mechanisms. *J Mol Cell Cardiol* 52: 93–104, 2012.
26. Lampert DJ, Dye L, Wightman JD, and Lawton CL. The effects of flavonoid and other polyphenol consumption on cognitive performance: A systematic research review of human experimental and epidemiological studies. *Nutr Aging* 1: 5–25, 2012.
27. Lemeshow S, Letenneur L, Dartigues JF, Lafont S, Orgogozo JM, and Commenges D. Illustration of analysis taking into account complex survey considerations: the association between wine consumption and dementia in the PAQUID study. *Personnes Ages Quid. Am J Epidemiol* 148: 298–306, 1998.
28. Letenneur L. Risk of dementia and alcohol and wine consumption: a review of recent results. *Biol Res* 37: 189–193, 2004.
29. Li Q and Ren J. Chronic alcohol consumption alters mammalian target of rapamycin (mTOR), reduces ribosomal p70s6 kinase and p4E-BP1 levels in mouse cerebral cortex. *Exp Neurol* 204: 840–844, 2007.
30. Liu P, Kemper LJ, Wang J, Zahs KR, Ashe KH, and Pasinetti GM. Grape seed polyphenolic extract specifically decreases abeta\*56 in the brains of Tg2576 mice. *J Alzheimers Dis* 26: 657–666, 2011.
31. Lu Y, Christian K, and Lu B. BDNF: a key regulator for protein synthesis-dependent LTP and long-term memory? *Neurobiol Learn Mem* 89: 312–323, 2008.
32. Manach C, Scalbert A, Morand C, Remesy C, and Jimenez L. Polyphenols: food sources and bioavailability. *Am J Clin Nutr* 79: 727–747, 2004.
33. Meiergerd SM and Schenk JO. Striatal transporter for dopamine: catechol structure-activity studies and susceptibility to chemical modification. *J Neurochem* 62: 998–1008, 1994.
34. Monti B, Berteotti C, and Contestabile A. Dysregulation of memory-related proteins in the hippocampus of aged rats and their relation with cognitive impairment. *Hippocampus* 15: 1041–1049, 2005.
35. Muntoni F, Mateddu A, and Serra G. Passive avoidance behaviour deficit in the mdx mouse. *Neuromuscul Disord* 1: 121–123, 1991.

36. Olton DS. The radial arm maze as a tool in behavioral pharmacology. *Physiol Behav* 40: 793–797, 1987.
37. Orgogozo JM, Dartigues JF, Lafont S, Letenneur L, Comenges D, Salamon R, Renaud S, and Breteler MB. Wine consumption and dementia in the elderly: a prospective community study in the Bordeaux area. *Rev Neurol (Paris)* 153: 185–192, 1997.
38. Priel A, Tuszynski JA, and Woolf NJ. Neural cytoskeleton capabilities for learning and memory. *J Biol Phys* 36: 3–21, 2009.
39. Rainey-Smith S, Schroetke LW, Bahia P, Fahmi A, Skilton R, Spencer JP, Rice-Evans C, Rattray M, and Williams RJ. Neuroprotective effects of hesperetin in mouse primary neurons are independent of CREB activation. *Neurosci Lett* 438: 29–33, 2008.
40. Reagan-Shaw S, Nihal M, and Ahmad N. Dose translation from animal to human studies revisited. *FASEB J* 22: 659–661, 2008.
41. Rendeiro C, Spencer JP, Vauzour D, Butler LT, Ellis JA, and Williams CM. The impact of flavonoids on spatial memory in rodents: from behaviour to underlying hippocampal mechanisms. *Genes Nutr* 4: 251–270, 2009.
42. Rendeiro C, Vauzour D, Kean RJ, Butler LT, Rattray M, Spencer JP, and Williams CM. Blueberry supplementation induces spatial memory improvements and region-specific regulation of hippocampal BDNF mRNA expression in young rats. *Psychopharmacology (Berl)* 223: 319–330, 2012.
43. Saeed AI, Bhagabati NK, Braisted JC, Liang W, Sharov V, Howe EA, Li J, Thiagarajan M, White JA, and Quackenbush J. TM4 microarray software suite. *Methods Enzymol* 411: 134–193, 2006.
44. Serra A, Rubio L, Borrás X, Macià A, Romero MP, and Motilva MJ. Distribution of olive oil phenolic compounds in rat tissues after administration of a phenolic extract from olive cake. *Mol Nutr Food Res* 56: 486–496.
45. Shukitt-Hale B, Cheng V, and Joseph JA. Effects of blackberries on motor and cognitive function in aged rats. *Nutr Neurosci* 12: 135–140, 2009.
46. Shukitt-Hale B, McEwen JJ, Szprengiel A, and Joseph JA. Effect of age on the radial arm water maze—a test of spatial learning and memory. *Neurobiol Aging* 25: 223–229, 2004.
47. Smale G, Nichols NR, Brady DR, Finch CE, and Horton WE, Jr. Evidence for apoptotic cell death in Alzheimer's disease. *Exp Neurol* 133: 225–230, 1995.
48. Spencer JP. The impact of fruit flavonoids on memory and cognition. *Br J Nutr* 104 Suppl 3: S40–S47, 2010.
49. Spencer JP. The impact of flavonoids on memory: physiological and molecular considerations. *Chem Soc Rev* 38: 1152–1161, 2009.
50. Spencer JP. Beyond antioxidants: the cellular and molecular interactions of flavonoids and how these underpin their actions on the brain. *Proc Nutr Soc* 69: 244–260, 2010.
51. This reference has been deleted.
52. Spencer JP, Vauzour D, and Rendeiro C. Flavonoids and cognition: the molecular mechanisms underlying their behavioural effects. *Arch Biochem Biophys* 492: 1–9, 2009.
53. Sun CY, Qi SS, Lou XF, Sun SH, Wang X, Dai KY, Hu SW, and Liu NB. Changes of learning, memory and levels of CaMKII, CaM mRNA, CREB mRNA in the hippocampus of chronic multiple-stressed rats. *Chin Med J (Engl)* 119: 140–147, 2006.
54. Swiech L, Perycz M, Malik A, and Jaworski J. Role of mTOR in physiology and pathology of the nervous system. *Biochim Biophys Acta* 1784: 116–132, 2008.
55. Thouvenecq R, Protais P, Jouen F, and Caston J. Influence of cholinergic system on motor learning during aging in mice. *Behav Brain Res* 118: 209–218, 2001.
56. Tsai SJ, Chao CY, and Yin MC. Preventive and therapeutic effects of caffeic acid against inflammatory injury in striatum of MPTP-treated mice. *Eur J Pharmacol* 670: 441–447, 2011.
57. Vafeiadou K, Vauzour D, and Spencer JP. Neuroinflammation and its modulation by flavonoids. *Endocr Metab Immune Disord Drug Targets* 7: 211–224, 2007.
58. Vaillend C, Billard JM, and Laroche S. Impaired long-term spatial and recognition memory and enhanced CA1 hippocampal LTP in the dystrophin-deficient Dmd(mdx) mouse. *Neurobiol Dis* 17: 10–20, 2004.
59. Vaillend C and Ungerer A. Behavioral characterization of mdx3cv mice deficient in C-terminal dystrophins. *Neuromuscul Disord* 9: 296–304, 1999.
60. Valls-Pedret C, Lamuela-Raventós RM, Medina-Remón A, Quintana M, Corella D, Pinto X, Martínez-González MA, Estruch R, and Ros E. Polyphenol-rich foods in the Mediterranean diet are associated with better cognitive function in elderly subjects at high cardiovascular risk. *J Alzheimers Dis* 29: 773–782, 2012.
61. Vauzour D, Corona G, and Spencer JP. Caffeic acid, tyrosol and p-coumaric acid are potent inhibitors of 5-S-cysteinyl-dopamine induced neurotoxicity. *Arch Biochem Biophys* 501: 106–111, 2010.
62. Vauzour D, Houseman EJ, George TW, Corona G, Garnotel R, Jackson KG, Sellier C, Gillery P, Kennedy OB, Lovegrove JA, and Spencer JP. Moderate Champagne consumption promotes an acute improvement in acute endothelial-independent vascular function in healthy human volunteers. *Br J Nutr* 103: 1168–1178, 2010.
63. Vauzour D and Minihane AM. Neuroinflammation and the APOε genotype: implications for Alzheimer's disease and modulation by dietary flavonoids and n-3 polyunsaturated fatty acids. *Nutr Aging* 1: 41–53, 2012.
64. Vauzour D, Ravaoli G, Vafeiadou K, Rodríguez-Mateos A, Angeloni C, and Spencer JP. Peroxynitrite induced formation of the neurotoxins 5-S-cysteinyl-dopamine and DHBT-1: implications for Parkinson's disease and protection by polyphenols. *Arch Biochem Biophys* 476: 145–151, 2008.
65. Vauzour D, Vafeiadou K, Corona G, Pollard SE, Tzounis X, and Spencer JP. Champagne wine polyphenols protect primary cortical neurons against peroxynitrite-induced injury. *J Agric Food Chem* 55: 2854–2860, 2007.
66. Vilkolinsky R, Cairns N, Fountoulakis M, and Lubec G. Decreased brain levels of 2',3'-cyclic nucleotide-3'-phosphodiesterase in Down syndrome and Alzheimer's disease. *Neurobiol Aging* 22: 547–553, 2001.
67. Wei X, Ma Z, Fontanilla CV, Zhao L, Xu ZC, Tagliabraci V, Johnstone BH, Dodel RC, Farlow MR, and Du Y. Caffeic acid phenethyl ester prevents cerebellar granule neurons (CGNs) against glutamate-induced neurotoxicity. *Neuroscience* 155: 1098–1105, 2008.
68. Wei X, Zhao L, Ma Z, Holtzman DM, Yan C, Dodel RC, Hampel H, Oertel W, Farlow MR, and Du Y. Caffeic acid phenethyl ester prevents neonatal hypoxic-ischaemic brain injury. *Brain* 127: 2629–2635, 2004.
69. Williams CM, El Mohsen MA, Vauzour D, Rendeiro C, Butler LT, Ellis JA, Whiteman M, and Spencer JP. Blueberry-induced changes in spatial working memory correlate with changes in hippocampal CREB phosphorylation and brain-derived neurotrophic factor (BDNF) levels. *Free Radic Biol Med* 45: 295–305, 2008.



AU6▶

70. Willis LM, Shukitt-Hale B, and Joseph JA. Modulation of cognition and behavior in aged animals: role for antioxidant- and essential fatty acid-rich plant foods. *Am J Clin Nutr* 89: 1602S–1606S, 2009.

Address correspondence to:  
 Prof. Jeremy P.E. Spencer  
 School of Chemistry, Food and Pharmacy  
 University of Reading  
 Reading RG6 6AP  
 United Kingdom

E-mail: j.p.e.spencer@reading.ac.uk

Date of first submission to ARS Central, December 13, 2012; date of final revised submission, February 8, 2013; date of acceptance, March 1, 2013.

#### Abbreviations Used

Akt = Akt/Protein kinase B  
 ANOVA = analysis of variance  
 Arc = activity-regulated cytoskeleton-associated protein  
 ATF2 = activating transcription factor 2  
 BBB = blood-brain barrier  
 Bcl-x = B-cell lymphoma 2-associated x protein  
 Bcl-xL = B-cell lymphoma 2 extra-large protein  
 BDNF = brain-derived neurotrophic factor  
 Cdc27 = cell division cycle protein 27  
 c-myc = Myc proto-oncogene protein  
 CNPase = 2',3'-cyclic-nucleotide 3'-phosphodiesterase  
 CREB = cAMP response-element-binding protein  
 E2F1 = transcription factor E2F1

Erk = extracellular-signal-regulated kinase  
 FAK = focal adhesion kinase  
 GADD 153 = growth arrest and DNA damage-inducible protein 153  
 GRB2 = growth factor receptor-bound protein 2  
 HPLC = high performance liquid chromatography  
 JNK = c-Jun aminoterminal Kinases  
 MAPK = mitogen-activated protein kinase  
 MPTP = 1-methyl-4-phenyl-1,2,3,6-tetrahydropyridine  
 mTOR = mammalian target of rapamycin  
 NGFR p75 = p75 Nerve Growth Factor Receptor, low affinity  
 NMDAR 2a = N-methyl-D-aspartate receptor 2a  
 NO = nitric oxide  
 p38 = mitogen-activated protein kinase 14 (p38-alpha)  
 p57kip2 = cyclin-dependent kinase inhibitor 1C, p57 isoform 1  
 PCAF = P300/CBP-associated factor  
 PGE2 = Prostaglandin E2  
 PKA C- $\alpha$  = cAMP-dependent protein kinase catalytic subunit-alpha  
 PKC a = Protein kinase C-alpha  
 PKC b = Protein kinase C-beta  
 PKC g = Protein kinase C-gamma  
 pro-BDNF = brain-derived neurotrophic factor precursor  
 PSR = phosphatidylserine receptor  
 PTEN = phosphatase and tensin homolog  
 Pyk2 = protein tyrosine kinase 2  
 raf-1 = RAF proto-oncogene serine/threonine-protein kinase  
 STRING = Search Tool for the Retrieval of Interacting Genes/Proteins  
 Tau = microtubule-associated protein tau



**AUTHOR QUERY FOR ARS-2012-5142-VER9-CORONA\_1P**

AU1: Please note that gene symbols in any article should be formatted per the gene nomenclature. Thus, please make sure that gene symbols, if present in this article, are italicized.

AU2: Please review all authors' surnames for accurate indexing citations.

AU3: Is it "tryptophane hydroxylase" or "tryptophan hydroxylase"? Please confirm.

AU4: Supplementary Figs. S1 and S2 are cited in the text but not provided. Please check.

AU5: Tables 1 and 2 has been changed to Supplementary Tables S1 and S2. Please confirm.

AU6: Reference 51 has been deleted from the reference list, as it was a duplicate of reference 48, and the text citation for it has been edited accordingly. If there is currently a reference missing that was meant to be in place of 51, please provide. Also, please indicate where in the text this reference should be cited. Please note that per ARS Journal style, we do not renumber references after additions or deletions. If there is no replacement for reference 51, we will retain this text in the reference list: "This reference has been deleted." Likewise, if a new reference is to be added, we will place it alphabetically using a system that doesn't involve renumbering.

AU7: Please cite Fig. 3 in the text.