

# *Union members at the polls in diverse trade union landscapes*

Article

Accepted Version

Arndt, C. and Rennwald, L. (2016) Union members at the polls in diverse trade union landscapes. *European Journal of Political Research*, 55 (4). pp. 702-722. ISSN 1475-6765 doi: <https://doi.org/10.1111/1475-6765.12157> Available at <https://centaur.reading.ac.uk/72615/>

It is advisable to refer to the publisher's version if you intend to cite from the work. See [Guidance on citing](#).

Published version at: <http://onlinelibrary.wiley.com/doi/10.1111/1475-6765.12157/abstract>

To link to this article DOI: <http://dx.doi.org/10.1111/1475-6765.12157>

Publisher: Wiley

All outputs in CentAUR are protected by Intellectual Property Rights law, including copyright law. Copyright and IPR is retained by the creators or other copyright holders. Terms and conditions for use of this material are defined in the [End User Agreement](#).

[www.reading.ac.uk/centaur](http://www.reading.ac.uk/centaur)

**CentAUR**

Central Archive at the University of Reading

Reading's research outputs online



**Union members at the polls in diverse trade union landscapes**

Journal:	<i>European Journal of Political Research</i>
Manuscript ID	EJPR-2015-0294.R1
Manuscript Type:	Original Manuscript
Keywords:	Trade unions, Voting behaviour, Social democracy

SCHOLARONE™  
Manuscripts

Peer Review

1  
2  
3  
4  
5  
6  
7  
8  
9  
10  
11  
12  
13  
14  
15  
16  
17  
18  
19  
20  
21  
22  
23  
24  
25  
26  
27  
28  
29  
30  
31  
32  
33  
34  
35  
36  
37  
38  
39  
40  
41  
42  
43  
44  
45  
46  
47  
48  
49  
50  
51  
52  
53  
54  
55  
56  
57  
58  
59  
60

**Union members at the polls in diverse trade union landscapes**

(Word count: 8'528 without this line)

For Peer Review

## Introduction

Historically, trade unions and social democratic parties were closely linked. They find their origins in the same movement. Social democratic parties acted as the political arm of the labour movement, while unions were the economic arm of the labour movement (Ebbinghaus 1995). Over the last years, the relationships between these two components were far from harmonious (e.g. Allern, Aylott & Christiansen 2007), even leading in some countries to the formation of new parties, for example Die Linke in Germany (e.g. Nachtwey & Spier 2007). While many recent contributions have focused on the difficulty for social democratic parties to mobilize their working-class constituencies (e.g. Arndt 2014, Arzheimer 2013, Gingrich & Häusermann 2015, Rennwald 2015), little is known on the support from trade union members.

Does social democracy still benefit from the support of this core clientele and which competitors does it face? This article proposes the first updated comparative analysis on the voting choice of union members in Western Europe. Despite the significant decrease of unionization in industrialized countries (see Pontusson 2013), union members still do represent a non-negligible share of the electorate (e.g. 17.7% of wage-earners in Germany, 25.4% in United Kingdom or 66.8% in Denmark (OECD.Stat 2013))<sup>1</sup>. As Streeck and Hassel (2003) notice, social democratic parties have often tried not to appear too close to trade unions, but at the same time still need the support of this constituency to win elections.

Two elements require a careful investigation. On the one hand, European party systems have grown more diverse with the rise of new left-wing parties (Greens and radical left) and radical right-wing parties. While the literature on electoral realignments and class voting has long taken this new configuration into account (for a literature review see Häusermann, Picot & Geering 2013), we do not have much information on the behaviour of union members in transformed party systems. On the other hand, with the change of the employment structure, unions organize not only the manual workers, but also increasingly (albeit not without difficulty), the higher-skilled white-collar workers. The organization of white-collar workers displays a strong cross-national variation. As put it by Ebbinghaus and Visser (2000: 54), “between countries with similar transformations in the class structure and similar shares of white-collar employment, we find significant differences in the pattern of organization and affiliation of white-collar employees and their unions”. However, to our knowledge, no

---

<sup>1</sup> Ebbinghaus et al. (2011) present an excellent overview on the determinants of cross-national variation in union membership in Europe.

1  
2  
3 comparative analysis has ever examined the effect of the diversified union landscape on  
4 electoral behaviour.  
5

6  
7 We therefore argue that the structure of the trade union movement represents an  
8 important (but of course not the sole) variable conditioning the impact of union membership  
9 on voting choice. More specifically, the relative strength of the different trade union  
10 confederations moderates the effect of union membership. The support of union members for  
11 social democracy is fostered by the strength of the confederations historically close to this  
12 party family, while it is hampered when strong separate (or politically unaffiliated) white-  
13 collar confederations exist. This specific variation highlights some opportunities and  
14 limitations (among many others) for the labour movement in times of changing employment  
15 structure.  
16  
17  
18  
19  
20  
21

22 The present article delivers above all an empirical contribution given the aim of  
23 providing a European overview on the topic. It contributes also to the debate on the future of  
24 social democracy (see Kitschelt 1994). A careful investigation of changes in class cleavage  
25 requires not only the study of its social basis, but also of its organizational component, and  
26 how the two might evolve independently from one another (Bartolini & Mair [2007] 1990:  
27 202-203). By studying the persistence or break of the party-union linkage in the electoral  
28 arena, this study constitutes a first step towards this ambitious goal.  
29  
30  
31  
32  
33

34 The paper is structured in the following way. The first two sections discuss the relevant  
35 literature on organized labour and present the hypotheses, first related to party system, second  
36 related to union structure. After the research design, the first empirical section presents the  
37 voting choice of union members in Europe and how it is conditioned by union structure. In the  
38 second empirical section, we show with Sweden as an illustrative case that the presence of  
39 specific white-collar confederations does not always bring an electoral advantage for social  
40 democracy.  
41  
42  
43  
44  
45  
46

### 47 **The distinct vote choice of union members in a new party landscape**

48  
49 A vast literature deals with the impact of unionization on the decision to participate in  
50 elections (for a literature review, see Pontusson 2013: 807-809). By contrast, only few  
51 (recent) studies have dealt in depth with the effect of union membership on party choice,  
52 mainly outside Europe (e.g. Freeman 2003, Leigh 2006) and based on single case studies (see  
53 for France Parsons 2015, for UK Quinn 2010).  
54  
55  
56  
57  
58  
59  
60

1  
2  
3 Why should union members be more likely to support specific parties? It is possible to  
4 consider this question under several perspectives. Firstly, the vote of union members can be  
5 understood as the product of the specific relationship between the two arms of the labour  
6 movement (social democratic party and trade union). Changes in this relationship should be  
7 reflected at the level of individual voting behaviour. Secondly, it is possible to emphasize the  
8 political attitudes of union members making them more likely to support specific parties.  
9 Thirdly, as unions represent the organizational component of the class cleavage (Bartolini &  
10 Mair [2007] 1990), it is possible to emphasize the parties' positioning and strategies on socio-  
11 economic issues and their potential impact on union members voting choice (for the "top-  
12 down" approach on social class, see Evans & De Graaf 2013). We briefly discuss these three  
13 elements and derive our hypotheses.  
14  
15  
16  
17  
18  
19  
20

21  
22 There is a widespread impression that the relationships between social democratic  
23 parties and trade unions have changed over the last years. However, the systematic empirical  
24 studies conducted display a nuanced picture. In Scandinavia for example, Allern et al. (2007)  
25 find deep changes in Denmark, but not in Norway or Sweden. Reviewing existing studies,  
26 Allern and Bale (2012: 14) emphasize the strong cross-national variation in the changes of  
27 party-union relations, and more generally the strong variety of linkages at stake. In their study  
28 on unions in ten Western European countries, Gumbrell-McCormick and Hyman (2013: 138)  
29 also come to a similar conclusion: even though the authors emphasize the fragility of party-  
30 union ties, there is in their view "no uniform process of distancing or divorce but strong cross-  
31 national variation".  
32  
33  
34  
35  
36  
37  
38

39  
40 Scholars have demonstrated the specific political attitudes of union members.  
41 Mosimann and Pontusson (2014) show that union members are more likely to support  
42 redistribution than other citizens. The effect is not due to the fact that individuals supporting  
43 redistribution are more likely to join unions. The authors convincingly show that there is a  
44 clear direction in this relationship. The fact of being member of a trade union generates a  
45 sense of solidarity with individuals of different income levels. Based on this, union members  
46 should be more likely to support parties advocating redistributive policies, which is the  
47 historical legacy of left-wing parties. But to what extent do social democratic parties benefit  
48 from a clear advantage compared to their competitors of the left-wing camp? Let's now  
49 discuss the positioning and strategies of parties on socio-economic issues.  
50  
51  
52  
53  
54  
55

56  
57 The growing competition of radical left-wing parties is in some countries directly  
58 related to divergences between social democratic parties and unions. The latter went to  
59  
60

1  
2  
3 increasingly criticize the political choices of social democratic parties, this especially when  
4 they were in power in several Western European countries in the late 1990s and beginning  
5 2000s. Thus, we expect social democratic parties to be in fierce competition with radical left-  
6 wing parties among union members. By contrast, the Greens find their origins in the criticism  
7 of the Keynesian (productivist) class compromise of the Post-World War advocated by both  
8 social democratic parties and unions (see Sassoon 1996: 647-690). For the former, this  
9 economic model promoted employment and growth, while for the latter it posed a threat to  
10 natural resources. Over the years, the labour movement went to integrate issues related to  
11 sustainable development. Yet, this difference in origins might still have some impact,  
12 particularly when issues of employment are in conflict with environmental issues. So, we  
13 expect trade union members to be relatively more likely to support social democratic parties  
14 than Green parties.  
15  
16  
17  
18  
19  
20  
21  
22

23  
24 Union members should be less likely to support right-wing parties. Similar party-  
25 interest group linkages have developed between conservative/liberal parties and employers'  
26 associations. However, recent literature has shown how radical right-wing parties strategically  
27 blur their positioning on economic and social policy (Rovny 2013, Afonso 2015). This  
28 strategy might allow radical right-wing parties to appear less as the arm of employers as  
29 compared to mainstream conservative and liberal parties. Based on the combination of the  
30 three elements discussed, we test the following hypotheses:  
31  
32  
33  
34

35  
36 *H1: Union members are generally more likely to vote for social democratic parties than to*  
37 *vote for other parties.*  
38

39  
40 *H2a: The effect of union membership is stronger in the contrast with the mainstream right-*  
41 *wing parties than in the contrast with radical right-wing populist parties.*  
42

43  
44 *H2b: The effect of union membership matters in the contrast with the Greens, but there is no*  
45 *difference with radical left-wing parties.*  
46  
47

### 48 **The impact of union membership in diverse union structures**

49

50 We have started from the idea that unions represent the economic arm of the labour  
51 movement. However, there exists a large variety of unions with different political conceptions  
52 and linkages with political parties, without mentioning the presence of Communist dominated  
53 unions in countries where the left was divided and the variety of (social democratic or labour)  
54 party-union relationships (Ebbinghaus 1995). Historically, Christian unions had developed as  
55  
56  
57  
58  
59  
60

1  
2  
3 competitors of the socialist labour movement inside the working class (Pasture 2002).  
4 Additionally, white-collar unions have formed in several countries in order to represent the  
5 interests of white-collar workers, seen as distinct from those of blue-collar workers.  
6  
7

8  
9 Taking into account this diversity, we therefore argue that the impact of union  
10 membership on voting behaviour is conditioned by the union structure existing in a country.  
11 The support for social democracy is likely to be affected by the strength of the different  
12 confederations. We focus here on the level of confederations, since the more or less  
13 formalized relationships between political parties and unions take generally place at this level.  
14 Not all confederations have the same linkages with social democratic parties. Moreover, some  
15 confederations organize specific segments of the workforce and this might impact on the  
16 conceptions of solidarity among their members. This element takes an increasing importance  
17 with the growth of white-collar employment.  
18  
19

20  
21 With its “most class-segmented union movement in the world” (Kjellberg 2013: 6), the  
22 Swedish case illustrates very well the challenges that the socialist labour movement faces.  
23 The blue-collar union confederation (LO), which is close to the Swedish social democratic  
24 party (SAP), has lost relatively weight within the union movement. While LO organized 78%  
25 of all union members in Sweden in 1950, it organizes only 44% of union members in 2013,  
26 the lowest share ever reached (Kjellberg 2013: 8). The shift has helped the growth of two  
27 other confederations, the university-educated professionals (Saco) and the other white-collar  
28 workers (TCO). In 2013 Saco organizes 17% of all union members, while TCO organizes  
29 36%. Both confederations stress their political independence, but historically the SAP had  
30 closer links to the TCO than to the Saco.  
31  
32

33  
34 The existence of separate confederations based on class constitutes an extreme case that  
35 can be found above all in Scandinavia. An intermediate case would be that both blue-collar  
36 and white-collar unions co-exist, but that they are reunited in the same confederation. At the  
37 other end, the most cohesive representation of all wage-earners exists in the case of vertical  
38 unions (industrial unionism), with all wage-earners of a company organized in the same  
39 union, irrespective of their class or function (Höpflinger 1980: 37-38). The presence of  
40 separate confederations does not mean that they are necessarily adversary, but it indicates  
41 nevertheless a need for a certain differentiation in the representation of wage-earners.  
42  
43

44  
45 Scholars have warned against overestimating the peculiarities of white-collar unionism  
46 which is very diverse (e.g. Blackburn & Prandy 1965, Crompton 1976). However, they have  
47 also emphasized some distinct characteristics of white-collar unions especially when they  
48  
49  
50  
51  
52  
53



1  
2  
3 organize wage-earners of a specific profession. In this case, they come closer to professional  
4 associations whose one characteristic is to “restrict entry to a profession in order to protect its  
5 status and prevent downwards wage pressure” (Kjellberg 2013: 35). Moreover, when they  
6 organize exclusively wage-earners with a higher status or a position close to the management,  
7 unions can develop a different ideological profile with a less contentious vision of the  
8 employment relations, more emphasis on representation than bargaining and a lower level of  
9 militancy (Blackburn & Prandy 1965). A recent study on the confederation of managerial  
10 staff in France (CFE-CGC) shows well the collaborative vision of union work among the  
11 members, as well as the reticence of the use of the strike (Béthoux et al. 2013).  
12  
13  
14  
15  
16  
17

18  
19 A decisive contribution by Mosimann and Pontusson (2014) indicates that the members’  
20 composition of unions affect the conception of solidarity of their members. Interested in the  
21 effect of union membership on support for redistribution, the authors show that union  
22 membership makes above all a difference for high-income individuals. It matters less for low-  
23 income individuals who have a strong self-interest in redistribution. However, among high-  
24 income individuals, the effect of union membership is stronger when unions encompass a  
25 large range of incomes. The authors suggest the following underlying mechanism: members  
26 of encompassing unions will more often meet and share experiences with people of different  
27 income levels and occupations thus generating more solidarity. By contrast, if unions organise  
28 a more limited range of incomes, their members will develop a more narrow sense of  
29 solidarity.  
30  
31  
32  
33  
34  
35  
36

37  
38 In this respect, we expect that the confederations grouping together academic and  
39 professionals (for example Saco in Sweden) will not have the same effect on voting behaviour  
40 as compared to the confederations historically close to the social democratic parties. Not only  
41 do the professional confederations lack organizational linkages with the social democratic  
42 parties, but they will also foster self-interest rather than large-scale solidarity with low  
43 incomes. This will open the way for typical competitors of social democracy among the  
44 middle class, the Greens and the centre-right parties. The impact of union membership on  
45 voting choice will be therefore conditioned by the strength of the different confederations  
46 within the trade union movement. The support for social democracy will be fostered by the  
47 strength of the confederations historically close to this political family. The following  
48 hypotheses are tested:  
49  
50  
51  
52  
53  
54

55  
56 *H3: The effect of union membership on voting social democracy increases with the*  
57 *membership share of the union confederation historically close to the social democratic party.*  
58  
59  
60

1  
2  
3 *H4: Strong independent academic and professional union confederations reduce the vote of*  
4 *union members for social democracy, but increase the vote for centre-right and green parties.*  
5  
6

### 7 8 **Research design and data**

9  
10 We combine a comparative study of 16 European countries in 2002-2010 with a cross-  
11 temporal case study of Sweden in the period 1986-2012.<sup>2</sup> The comparative study allows  
12 testing the effect of union membership (micro-level) in diverse union structures (macro-level)  
13 with multilevel models. Given the differences in historical trajectories, we focus on West  
14 European countries. For union structure, we make use of the Jelle Visser's (2013) data base  
15 *Institutional Characteristics of Trade Unions, Wage Setting, State Intervention and Social*  
16 *Pacts, 1960-2011 (ICTWSS)*. We then combine it with the European Social Survey (ESS)<sup>3</sup>  
17 2002-2010 which contains an item on current union membership and various controls. It also  
18 allows operationalizing class position through the Oesch-class schema (Oesch 2006).  
19  
20  
21  
22  
23  
24

25 In Sweden, we can study the membership in different confederations directly at the  
26 micro-level on the basis of the annual Riks-SOM surveys (Weibull et al. 2014). The cross-  
27 temporal case study therefore provides a second test of our hypotheses to substantiate the  
28 results of the multilevel models. In the comparative study, we show that the strength of  
29 professional/academic confederations plays at the disadvantage of social democracy. With the  
30 case study, we can show more in detail with whom social democracy is in competition, this  
31 over a long time period. The Swedish case is also important from a substantial point of view.  
32 It demonstrates well the importance of making further differentiations across union  
33 confederations. This holds particularly true for Scandinavian countries where class-based  
34 confederations exist in a high union density context fostered by the Ghent unemployment  
35 insurance system<sup>4</sup> (Ebbinghaus, Göbel & Koos 2011).  
36  
37  
38  
39  
40  
41  
42  
43

### 44 *Operationalization of union structure with the ICTWSS data*

45  
46 We coded the different union confederations (peak organisations) in every country into six  
47 categories. We then calculated the share of the union members organized through the  
48 confederation as their strength and as measure for union structure. The six categories are  
49 "social democratic", "public sector/white-collar", "academic/professional", "Christian",  
50  
51  
52

53  
54  
55 <sup>2</sup> We analyse Austria, Belgium, Denmark, Finland, France, Germany, Ireland, Italy, Luxembourg, the  
56 Netherlands, Norway, Portugal, Spain, Sweden, Switzerland, and the UK.

57 <sup>3</sup> Further details and documentation are available at <http://www.europeansocialsurvey.org/>

58 <sup>4</sup> Under the Ghent system, unemployment insurance is predominantly organized by the trade unions and not the  
59 state which makes union membership a condition for unemployment benefit eligibility.  
60

1  
2  
3 “communist”, and “other”. The categorization includes both the traditional competitors for the  
4 labour movement, i.e. the Christian and the communist confederations, as well as the  
5 confederations of white-collar workers which are of special interest in this article due to the  
6 changes of the employment structure.  
7  
8

9  
10 The category “social democratic” includes those confederations that have a dominant  
11 position within the union system and that are traditionally and predominantly linked to the  
12 social democratic party such as the Austrian ÖGB, the British TUC or the Swedish LO. We  
13 cannot do full justice to the large diversity of confederations and of their linkages with (social  
14 democratic) parties across Europe. For example, in Austria, political factions play an  
15 important role within the ÖGB structure (Ebbinghaus 2000: 84-85). In Great Britain, not all  
16 TUC member organizations are affiliated to the Labour Party, but it is the case of a large  
17 majority of them (representing 69% of all TUC members).  
18  
19

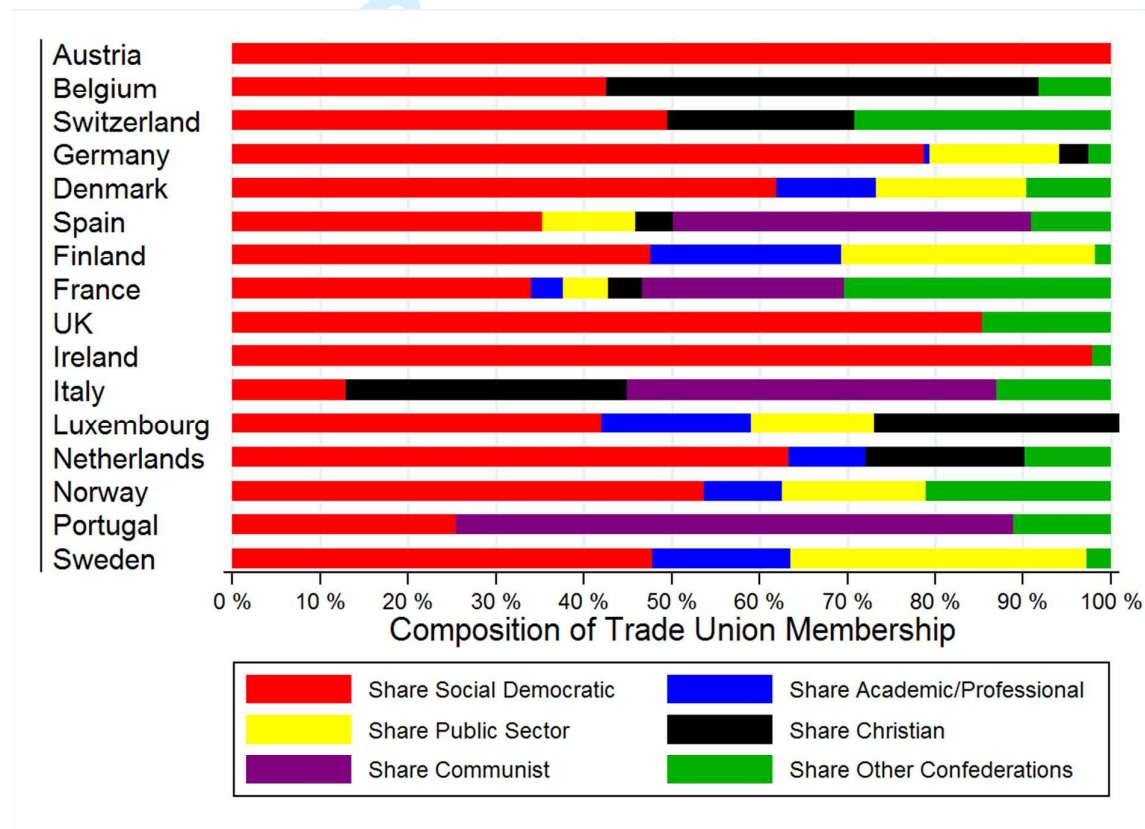
20  
21 The category “academic/professional” includes those federations that are not part of the  
22 dominant social democratic umbrella organization and (mainly) represent academics,  
23 professionals, and executive managers, predominantly in the private sector. The Finnish  
24 AKAVA or the Swedish SACO are examples. The public sector confederations are those that  
25 are independent of the social democratic confederation and mainly organize white-collar  
26 workers in the public sector (for example the German Beamtenbund). In Scandinavia, the  
27 confederations of this category bring together both public and private sector white-collar  
28 workers (for example the TCO in Sweden). The full classification appears in Table A.1 in the  
29 appendix.  
30  
31

32  
33 The six variables contain thus the share of labour organized under a particular  
34 confederation. For instance, the value for the social democratic organization in Austria is 1.00  
35 or 100% since Austria has only one peak organization which is predominantly close to the  
36 social democratic party. The value for academic/professional confederations for Finland is  
37 0.217 or 21.7% since the independent union confederation AKAVA organized more than  
38 every fifth union member in Finland in the period after 2001. For the multilevel analysis, we  
39 created cross-level interactions between union membership and our six union confederation  
40 measures. The cross-level interactions measure the effect of union membership on party  
41  
42  
43  
44  
45  
46  
47  
48  
49  
50  
51  
52  
53  
54  
55  
56  
57  
58  
59  
60

choice across the range of the confederation membership share (e.g. from 0 per cent to 25 per cent organized in academic/professional unions).<sup>5</sup>

Figure 1 shows that the composition of trade union membership varies considerably and that there is a certain clustering of countries. Austria is as mentioned before the only country where every union member is member of the same confederation, the ÖGB. The same is virtually true for Ireland and the UK which have no other real competitor to their Trade Union Congresses than minor and non-classifiable confederations. This constellation should therefore have positive effects on the support of union members for social democracy (Hypothesis 3).

**Figure 1:** Composition of Trade Union Membership over Confederations, 16 European countries, 2002-2010 (averaged)



Source: Own calculations based on Visser (2013). See Table A.1 for classification of individual unions.

The four Nordic countries have all a large confederation organizing 50-60 percent of union members, but also larger public sector and professional confederations that organize

<sup>5</sup> Since the six union structure variable represent compositional data, the category 'other' was left out as reference category.

1  
2  
3 between 10 and 35 percent of the unionized workforce. Especially the presence of strong  
4 academic/professional unions should reduce the support for Social democracy (Hypothesis 4).  
5 A third cluster concerns the Continental European countries Belgium, Switzerland,  
6 Luxembourg and the Netherlands, where a Christian confederation competes with the social  
7 democratic confederation. The Mediterranean countries France, Italy, Portugal, and Spain are  
8 characterized by the presence of a larger leftist/communist confederation and fragmented  
9 union structures.

10  
11  
12  
13  
14  
15 *Case study: Sweden 1985-2010*

16  
17 We use the Swedish Riks-SOM surveys which are annual opinion polls on a variety of  
18 economic, social, and political issues conducted since 1986.<sup>6</sup> We use the “Super Riks-SOM  
19 1986-2012” (SND-0905), a pooled dataset containing all surveys (Weibull et al. 2014). It  
20 includes an item that asked the respondents whether they were member of a trade union with  
21 four response options 1 “yes, member of a union organized under LO”, 2 “yes, member of a  
22 union organized under TCO”, 3 “yes, member of a union organized under SACO”, and 4 “not  
23 a trade union member”. This is to our knowledge the best available item in election studies to  
24 capture union membership in different confederations over a longer time span in Western  
25 countries. We ran a multinomial logit model with vote choice in election years as dependent  
26 variable and interactions between union confederation membership and year as main  
27 independent variables (e.g. TCO\*year). These results will be presented as predicted party  
28 choice over the different union confederations in the period 1985-2010 controlled for class,  
29 age, education, sector, and sex.

30  
31  
32  
33  
34  
35  
36  
37  
38  
39  
40 **Comparative analysis of the vote choice of trade union members**

41  
42 We used a stepwise model building strategy and began with multilevel logit models that  
43 contained only individual level variables as well as two basic macro-level controls (union  
44 density and Ghent system). We then added our measures for union structure and finally  
45 interacted union membership with the three relevant union confederations. We start by  
46 examining the vote choice of union members for the different parties (Hypotheses 1 and 2).  
47 We then add the cross-level interactions to demonstrate how the vote of union members is  
48 conditioned by the strength of the different confederations (Hypotheses 3 and 4). The results  
49 for the interactions will be visualised, since their interpretation in logistic models is not

50  
51  
52  
53  
54  
55  
56  
57  
58  
59  
60  

---

<sup>6</sup> The data and further description can be accessed at <http://snd.gu.se/sv/catalogue/series/9>.

1  
2  
3 always straightforward (Berry, DeMeritt & Esarey 2010, Brambor, Clark & Golder 2006).  
4 The coefficients for these models appear in the online appendix.  
5

6  
7 *The continuing preference of union members for the left*

8  
9 Table 1 presents the results for the effects of union membership and union structure for the  
10 party contrasts of interest in Models 1-10 (controlled for class and other demographic  
11 controls, not shown)<sup>7</sup>. M1 demonstrate that union members are significantly more likely to  
12 support social democratic parties versus all other parties, as was expected in Hypothesis 1.  
13 Turning to the different party contrasts, we can see that union members are significantly less  
14 likely to vote for centre-right parties over social democratic parties (M3). They are also  
15 significantly less likely to support the radical right (M7). The coefficient is even slightly  
16 stronger than in the case of the centre-right speaking against Hypothesis 2a.  
17  
18  
19  
20  
21

22 Union membership significantly decreases the support for the Greens over social  
23 democracy (M5), but the effect is weaker than in the case of the centre-right. Contrarily to all  
24 other party contrasts examined, the radical left does not show significant differences to social  
25 democracy among union members (M9). The disadvantage of the Greens among union  
26 members and the competition from the radical left speaks in favour of our Hypothesis 2b.  
27 Generally, the radical left comes closest to social democracy in its electoral profile, since it  
28 has the lowest number of significant predictors in our analysis (also regarding the controls).  
29 Finally, looking at the macro-level control of union density, the pattern is the same as for  
30 union membership at the individual level.  
31  
32  
33  
34  
35  
36  
37

38 Next, we briefly examine the models including the trade union structure at the macro-  
39 level (M2, M4, M6, M8, M10). The effect of union membership on party choice remains  
40 unchanged. However, it is interesting to note that the significant effect of union density  
41 disappears once we introduce the more detailed union structure in M2 (also in M6 and M8).  
42 This means that union density alone is no powerful predictor of social democracy's strength  
43 once we control for the diversity of trade union confederations.  
44  
45  
46  
47

48 Always at the macro-level, M2 demonstrate that the strength of the different  
49 confederations play a role in the support for social democracy. A high membership share in  
50 the confederation traditionally linked to social democracy is significantly beneficial for social  
51 democracy, which provides some first evidence for Hypothesis 3. Strong public sector  
52 confederations also provide an important mobilisation base for social democracy. In contrast,  
53  
54  
55  
56  
57

58 <sup>7</sup> Full tables appear in the online appendix.  
59  
60

1  
2  
3 strong academic/professional confederations exhibit a disadvantage for social democratic  
4 parties since the coefficient is highly negative in M2, which provides some first evidence for  
5 Hypothesis 4. A similar pattern can be observed for the different party contrasts (M4, M6,  
6 M8, M10). Strong academic/professional confederations significantly increase the support for  
7 the centre-right and the radical right, while public sector confederations significantly decrease  
8 the vote for the centre-right and the Greens. Strong social democratic confederations  
9 significantly decrease the support for the Greens and the radical right, but have no significant  
10 effect in the case of the centre-right.  
11  
12  
13  
14  
15  
16  
17  
18  
19  
20  
21  
22  
23  
24  
25  
26  
27  
28  
29  
30  
31  
32  
33  
34  
35  
36  
37  
38  
39  
40  
41  
42  
43  
44  
45  
46  
47  
48  
49  
50  
51  
52  
53  
54  
55  
56  
57  
58  
59  
60

For Peer Review



**Table 1:** Union membership, union structure, and vote choice, 2002-2010 in 16 Western countries

	SD vs. all other		Centre-right vs. SD		Greens vs. SD		Radical right vs. SD		Radical Left vs. SD	
	M1	M2	M3	M4	M5	M6	M7	M8	M9	M10
Union member	0.479 (0.021)***	0.487 (0.022)***	-0.573 (0.027)***	-0.586 (0.027)***	-0.253 (0.040)***	-0.266 (0.040)***	-0.609 (0.048)***	-0.619 (0.048)***	-0.044 (0.051)	-0.043 (0.052)
Constant	-2.186 (0.230)***	-3.654 (0.672)***	1.574 (0.256)***	0.973 (0.803)	-0.816 (0.563)	6.278 (1.525)***	-0.562 (1.089)	13.908 (3.749)***	-3.964 (0.755)***	-5.718 (2.510)*
<i>Macro-level variables: Trade union structure (share of members organised in given federation of all members in per cent)</i>										
Union density	0.018 (0.005)***	0.007 (0.005)	-0.018 (0.006)**	-0.014 (0.006)*	-0.032 (0.009)***	0.000 (0.012)	-0.064 (0.014)***	0.027 (0.025)	-0.018 (0.011)	-0.027 (0.020)
Ghent system	-1.103 (0.397)**	-0.521 (0.351)	1.021 (0.427)*	0.614 (0.385)	2.071 (1.033)*	0.546 (1.282)	2.492 (2.090)	-12.224 (5.273)*	0.977 (1.394)	0.347 (1.881)
SD-federation		1.670 (0.786)*		0.800 (0.938)		-8.852 (2.013)***		-24.092 (4.702)***		2.797 (3.487)
Public sector		6.303 (1.490)***		-4.330 (1.768)*		-15.459 (2.891)***		-0.937 (4.377)		8.961 (4.461)*
Academic/prof.		-5.777 (1.256)***		9.990 (1.528)***		4.523 (2.710)		60.936 (6.473)***		-1.838 (3.561)
Christian		1.747 (1.054)		-0.121 (1.251)		-5.631 (3.257)		-13.071 (7.507)		-0.068 (4.837)
Communist		3.710 (0.956)***		-0.470 (1.077)		-13.152 (2.880)***		-37.091 (8.735)***		0.285 (3.812)
Random inter- cept variance	0.354 (0.133)*	0.158 (0.066)*	0.372 (0.144)*	0.186 (0.078)*	2.761 (1.164)*	2.651 (1.288)*	11.490 (4.968)*	59.861 (32.67)*	5.156 (2.201)*	5.684 (3.259)*
N	67,500	65,389	41,437	40,032	26,985	26,119	25,539	24,764	24,791	23,927
-2Loglikelihood	-39,400.11	-38,069.75	-25,992.66	-25,038.47	-11,330.27	-10,918.12	-7,787.58	-7,545.76	-7,848.27	-7,497.39
Chi-square test of rho=0	2,349.5***	974.8***	1,291.1***	690.1***	1,553.4***	1,303.9***	4,960.9***	1,344.2***	2,330.4***	1,378.5***

Note: \* p<0.05; \*\* p<0.01; \*\*\* p<0.001. Controls for age, class, education, religion and sex not shown.



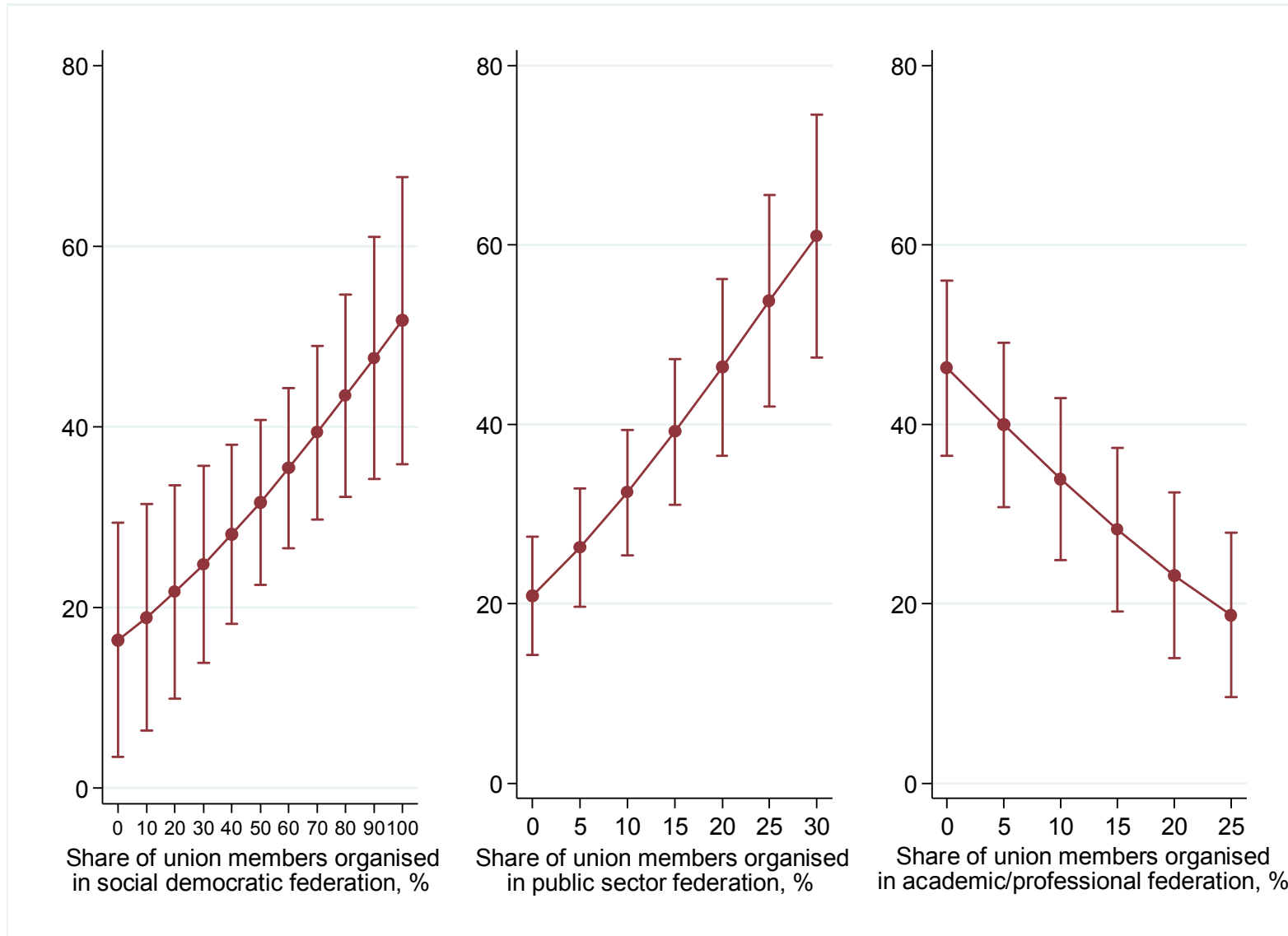
1  
2  
3 *When specific confederations boost the support of union members for the right*

4 We now turn to the analyses containing the cross-level interactions between the three  
5 confederations of interest and union membership. To reiterate, the rationale is to inspect  
6 whether union members' voting behaviour is conditioned by the varying strength of social  
7 democratic, public sector, and academic professional union federations.  
8  
9

10  
11 Figure 2 begins with plotting the predicted probabilities for the contrast social  
12 democrats versus all other parties (see Table A.1 in online appendix for the full model). The  
13 left-hand panel shows that the support for social democracy among union members increases  
14 with the membership share in the traditional social democratic peak organisation. If only half  
15 of the organized labour force is member of this peak organisation, the predicted support of  
16 union members for social democracy is around 30 per cent, while their predicted support  
17 increases to more than 50 per cent if everybody is member of the social democratic umbrella  
18 (as in Austria). A similar and somewhat stronger pattern occurs in the middle panel which  
19 plots the interaction *union member\*public sector confederation*.  
20  
21  
22  
23  
24  
25  
26

27 The opposite is true if we look at the right-hand panel. The support for social democracy  
28 among organized managers more than halves from 46 to 19 per cent across the observed  
29 values of the membership shares in the academic/professional unions. Accordingly, it is not  
30 easy for social democracy to mobilize middle class voters if these are organized under an  
31 independent academic white-collar organisation. By contrast, strong social democratic  
32 confederations boost the support of union members for social democracy, as well as public  
33 sector confederations. These findings corroborate Hypothesis 3 and give some first support  
34 for Hypothesis 4 which we now investigate further in detail by presenting the results for the  
35 party contrasts centre-right vs. social democracy and greens vs. social democracy.  
36  
37  
38  
39  
40  
41  
42  
43  
44  
45  
46  
47  
48  
49  
50  
51  
52  
53  
54  
55  
56  
57  
58  
59  
60

Figure 2: Predicted vote share for Social Democracy among union members (y-axis) over membership shares in three union confederations



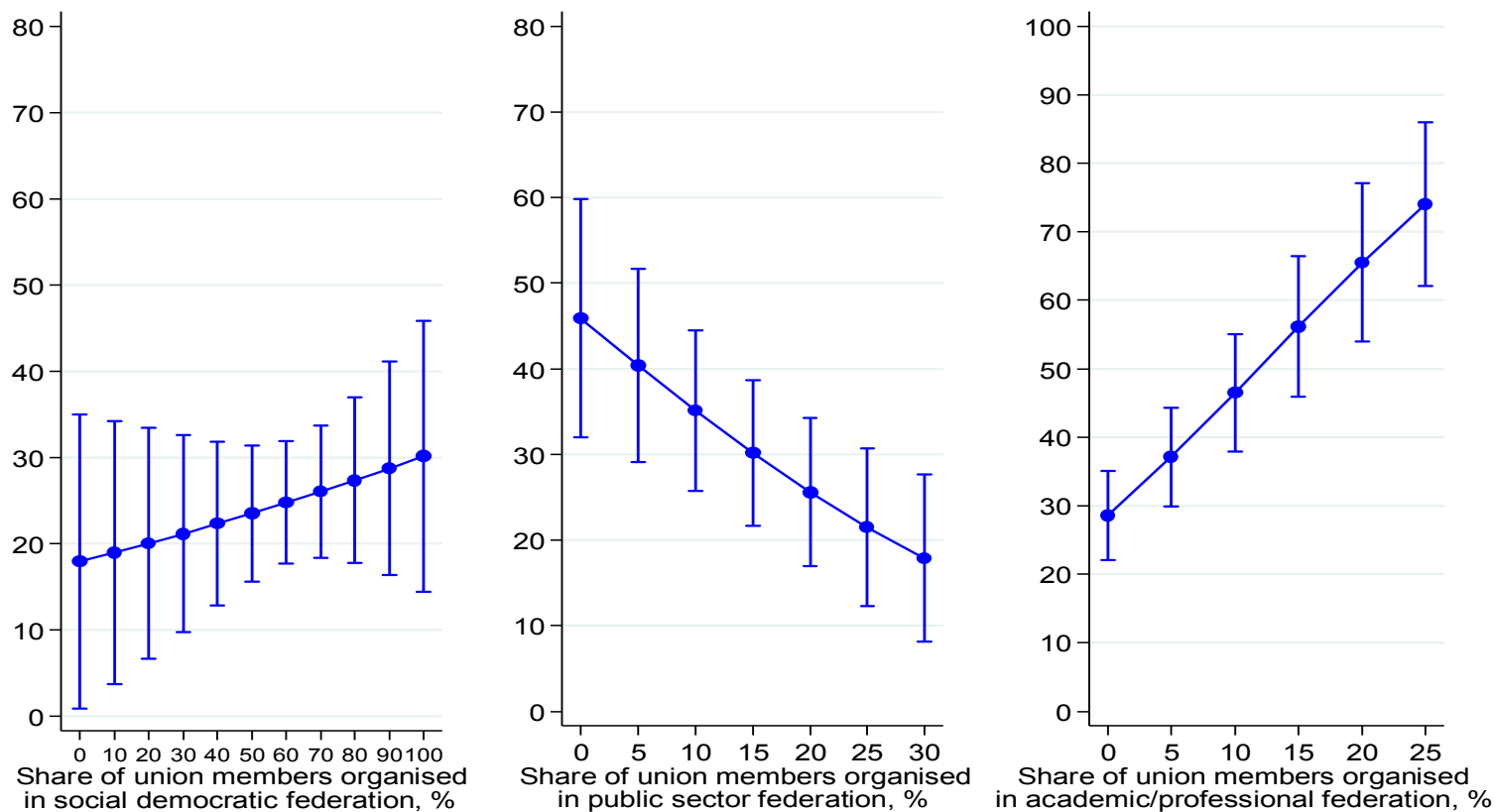
Source: Predicted probabilities based on Models M2a-M2c in Table A1 (online appendix). Left-hand panel: low educated unionized production worker; Middle panel: female unionized socio-cultural specialist with tertiary education; Right-hand panel: unionized manager with tertiary education (all 45 years).

1  
2  
3 Figure 3 presents the probabilities for the contrast centre-right versus social democracy.  
4 The left-hand side shows surprisingly that support for centre-right parties among union  
5 members does not diminish with increasing strength of traditional social democratic unions –  
6 a result that already occurred in Model 4 in Table 1. By contrast, the results for the middle  
7 panel indicate as previously that the public sector federations work as a mobilisation base for  
8 social democracy.  
9

10  
11  
12  
13 Finally, the right-hand panel shows that strong academic union federations increase the  
14 vote for the centre-right vis-à-vis social democracy. A unionized manager has a probability of  
15 around 28 percent to vote for the centre-right if there is no independent academic federation  
16 (as is the case in Austria), but has a probability of more than 70 percent to support the centre-  
17 right if the academic confederations organize one fourth of all union members (our observed  
18 maximum in Finland). This provides strong support for Hypothesis 4 in case of centre-right  
19 parties and indicates that social democratic parties have mobilization problems if middle class  
20 professions are organized under separate academic federations.  
21  
22  
23  
24  
25

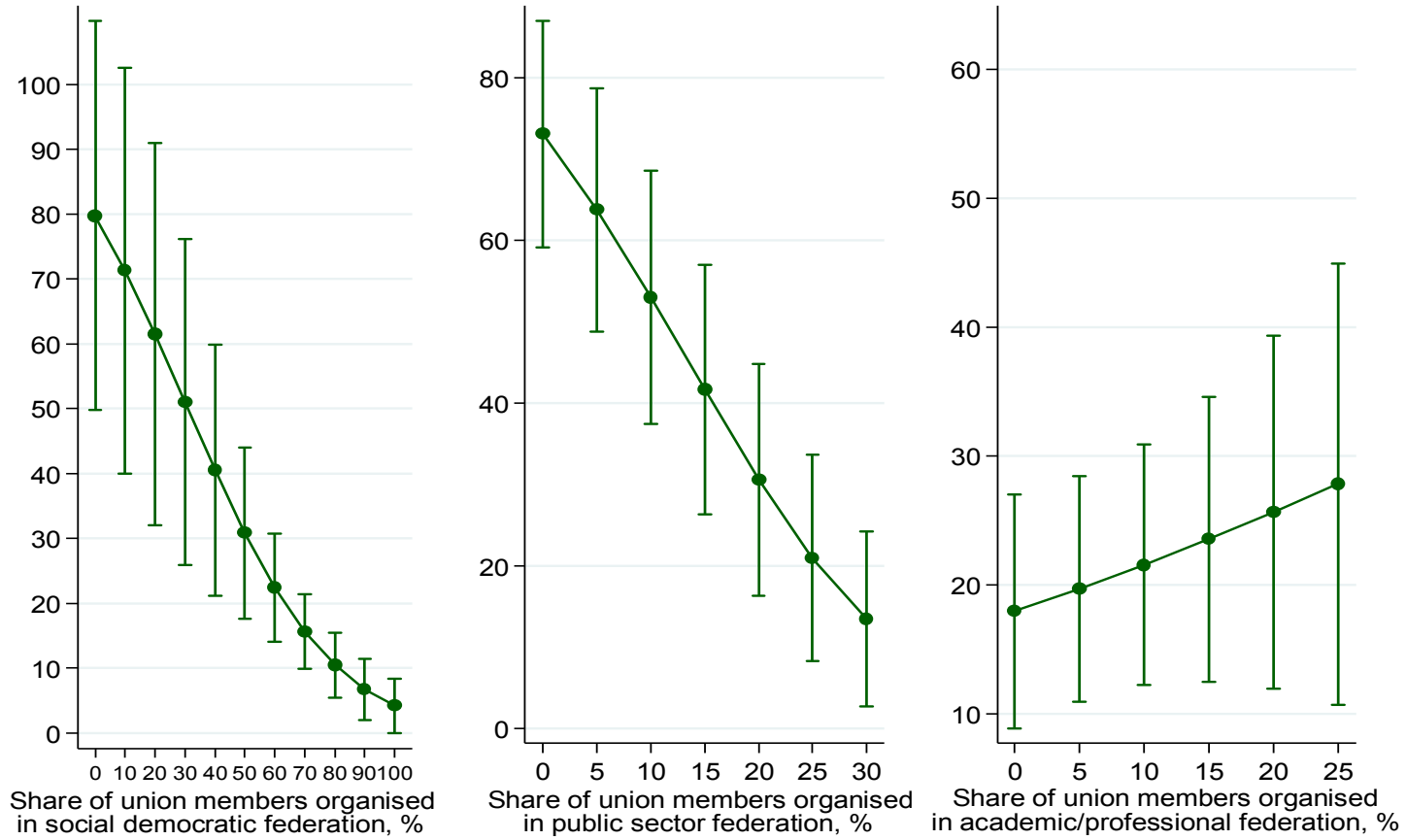
26  
27 Next, we turn to the contrast green parties vs. social democracy in Figure 4. The left-  
28 hand panel shows that green parties have a structural disadvantage among union members if  
29 strong social democratic unions are present. The same goes for the effect of membership in  
30 public sector unions shown in the middle panel. In the right-hand panel, by contrast, the  
31 support for the Greens among organized socio-cultural specialists further increases with the  
32 membership share in academic/professional unions. This is contrarily to the results for the  
33 centre-right not significant, but provides some more tentative support for our Hypothesis 4.  
34  
35  
36  
37  
38  
39  
40  
41  
42  
43  
44  
45  
46  
47  
48  
49  
50  
51  
52  
53  
54  
55  
56  
57  
58  
59  
60

Figure 3: Predicted vote share for Centre-right vs. Social Democracy among union members (y-axis) over membership shares in three union confederations



Source: Predicted probabilities based on Models 4a-4c in Table A2 (online appendix). Left-hand panel: low educated unionized production worker; Middle panel: female unionized socio-cultural specialist with tertiary education; Right-hand panel: unionized manager with tertiary education (all 45 years).

Figure 4: Predicted vote share for Greens vs. Social Democracy among union members (y-axis) over membership shares in three union confederations



Source: Predicted probabilities based on Models M6a-M6c in Table A3 (online appendix). Left-hand and right-hand panel: unionized manager with tertiary education; Middle panel: female unionized socio-cultural specialist with tertiary education (all 45 years).

### Case study: Party choice among Swedish union members 1985-2010

We turn to the in-depth analysis of the Swedish case in the period 1985-2010. To reiterate, the following results present predicted probabilities from a multinomial logit model with the Riks-SOM surveys 1985-2010 for election years.<sup>8</sup> We show the predicted vote choice in percent obtained from the interaction trade union confederation membership\*election year for the Swedish parties. The results for the radical right base on a model for a shorter time period since this party family emerged in 1991 with the New Democracy surpassing the threshold.

Beginning with LO member's vote choice in Figure 5a, we can see that the SAP has lost around 10 percent support among LO members since 1985 – the confederation traditionally affiliated with the SAP. The SAP is nevertheless the dominating party here as it still gains more than every second LO member in 2010, while its support among unorganized voters never exceeds 30 percent in the whole period. This further confirms our Hypothesis 1 on the positive effects of union membership in traditional blue-collar federation for social democratic vote choice. Another supplementary analysis containing interactions between the membership share for the LO and LO membership (available on request from the authors) replicates this finding and also reveals that the effect of being an LO member on supporting the SAP decreases with the falling membership share of the LO. This resembles our cross-country findings from Figure 2 and confirms Hypothesis 3.

Furthermore, Figure 5a also reveals that the conservative Moderate Party has become rival for the SAP among LO members. This is consistent with the cross-country study which showed that the support for centre-right parties among union members did not diminish with increasing strength of social democratic confederations. However, the pattern is clearer in the case of the Swedish Left Party, since it increases its vote shares only among LO members. This is in line with Hypothesis 2b<sup>9</sup> and previous research which demonstrated that the radical left has gained strength among disillusioned social democratic constituencies (Arndt 2013, Karreth, Polk & Allen 2013). Finally, tentative results for the radical right for three elections (figure 5b) suggest a further competition for the social democrats. The data used only distinguished the radical right's

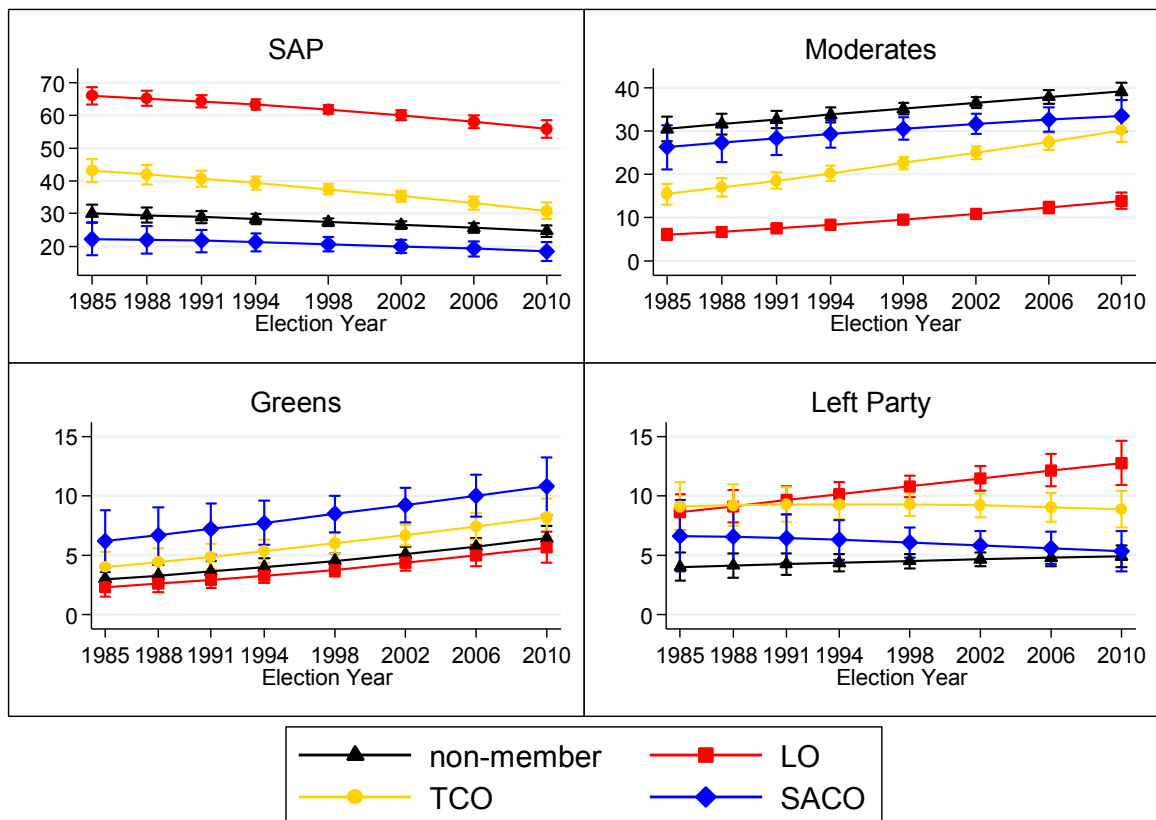
---

<sup>8</sup> See the online appendix for the full models and further details.

<sup>9</sup> In all our analyses for Sweden, the Left Party is the only party that does not significantly differ from the SAP in the voting behaviour of union members (LO).

voters from other parties in 1991 (New Democracy, ND) and 2006/2010 (Sverigedemokraterna, SD). While the ND had an indistinguishable support among the four categories of our independent variable in 1991, the SD shows significantly stronger support among LO members and unorganized voters compared to members of the two white-collar federations.

**Figure 5a:** Predicted Vote Shares Among Union Members, Elections for Swedish Riksdag 1985-2010

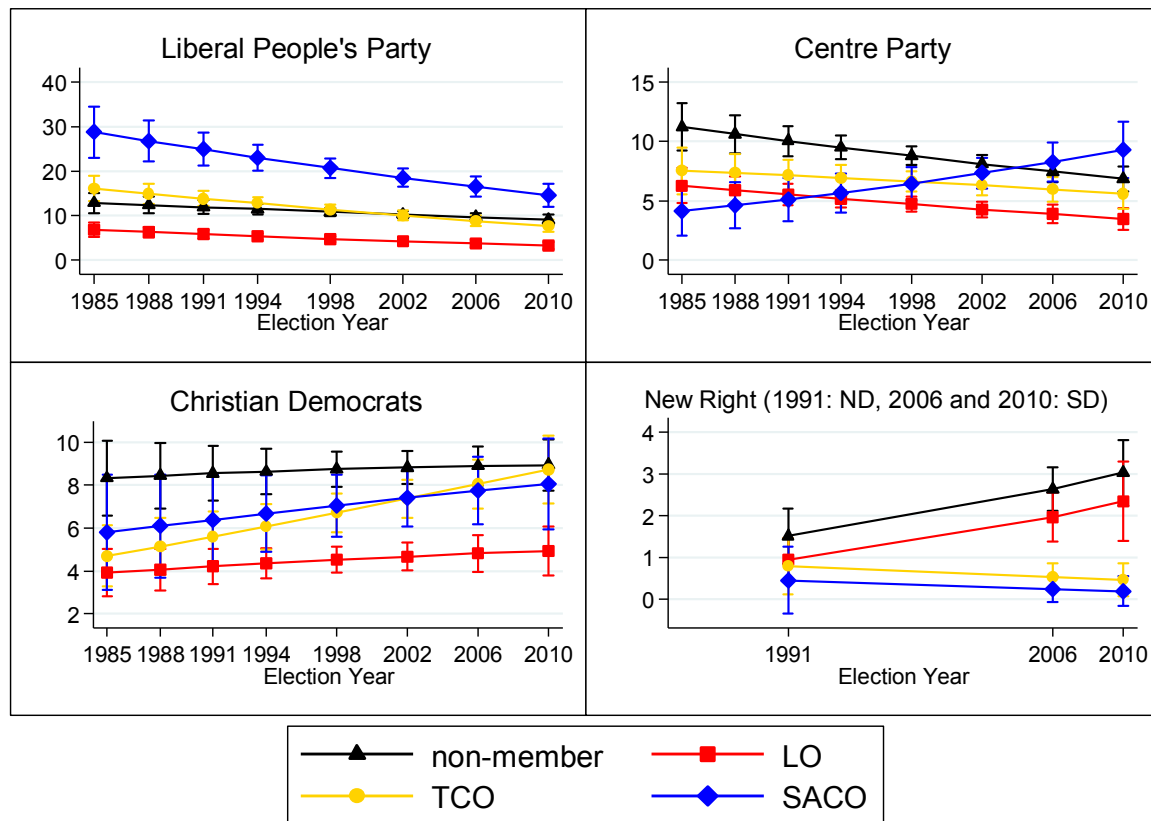


*Source:* Multinomial logit models with Riks-SOM surveys 1985-2010 (N=14,764). Y-axis shows predicted vote shares for parties in percent. Models include class, age, education, private-public sector and sex as controls and fixed at means or modes.

Does the SAP succeed in broadening its supporter base in order to compensate for the loss of LO support and the declining share of LO members among the organized labour force? In line with hypothesis 4, our cross-country analysis has shown that independent academic and professional union confederations do not always bring an advantage for social democratic parties. The Swedish case demonstrates the same logic for the professional Saco confederation. The support of Saco members for the SAP was never strong and even significantly fell below the

SAP's support among unorganized voters. In contrast, the Saco members have reinforced their affiliation with the conservative Moderates and the difference in support to the SAP has become significant after 1994. The Greens have also constantly gained support among Saco members. The Greens and the Liberal People's Party (Figure 5b) are also the only parties whose support is constantly strongest among Saco members vis-à-vis all other confederations and non-members. These results yield further support for our fourth hypothesis that academic and professional unions impede a social democratic mobilization of the new middle class. A further notable result is the internal reallocation of Saco support within the bourgeois bloc where the Liberal People's Party has constantly lost support to the benefit of the Moderates, the Centre Party, and the Christian Democrats.

Figure 5b: Predicted Vote Shares Among Union Members, Elections for Swedish Riksdag 1985-2010



Source: Multinomial logit models with Riks-SOM surveys 1985-2010 (N=14.764). Y-axis shows predicted vote shares for parties in percent. Models include class, age, education, private-public sector and sex as controls and fixed at means or modes. ND: Ny Demokrati, SD: Sverigedemokraterna.



1  
2  
3 A somewhat different pattern is found for the members of the confederation TCO which  
4 organizes twice as much members as Saco. Similarly to LO members, the SAP has lost support  
5 among TCO members, while the Greens and particularly the Moderates have gained support.  
6 After 2002, the difference in Moderate support among the TCO is no longer statistically different  
7 from the Saco members. However, the SAP is throughout the whole period the strongest party  
8 among TCO members and the difference to the Moderates is statistically significant at the 95  
9 percent level for all years except 2010. The three left parties (SAP, Greens, and Left Party) are  
10 also the parties that are consistently stronger among TCO members compared to unorganized  
11 voters, while the pattern for the bourgeois parties is the opposite. This confirms to some degree  
12 the finding from the 16 country analysis that public sector/white-collar unions are beneficial for  
13 social democracy and the left in general.  
14  
15  
16  
17  
18  
19  
20  
21  
22

23 We have shown here the party preferences of the “average” union member in three different  
24 confederations. In order to show that the presence of separate white-collar confederations really  
25 makes a difference at the individual level, we further interacted union confederation membership  
26 with social class (see Appendix B). Let’s take as example a person from the lower salariat which  
27 forms an ideal recruitment target for white-collar unions. Indeed, this social class is  
28 predominantly organized in the TCO with 37% (average for the entire period), but also to some  
29 extent in the Saco (19%) and in LO (6%). The predicted probabilities (left-hand panel of Figure  
30 B1 in Appendix B) show that members of the lower salariat have a strong propensity to vote for  
31 the SAP and a weak propensity to vote for the Moderates if organized under LO. The pattern is  
32 completely reversed if the person is organized under Saco – he/she votes in a similar way as a  
33 non-member. This is not the case if the person is organized under the other white-collar  
34 confederation. Among the lower salariat organized under TCO, the SAP still has a significant  
35 advantage over the Moderates, but the pattern is weaker compared to the LO. These findings  
36 suggest the existence of context effects beyond the pure differences in who is the “average” union  
37 member<sup>10</sup>.  
38  
39  
40  
41  
42  
43  
44  
45  
46  
47  
48  
49  
50  
51  
52  
53  
54

---

55  
56 <sup>10</sup> Further analyses on Austria (see Appendix B) also shed light on this contextual effect. The members of the ÖGB  
57 confederation (indeed all union members in this country) have a close level of support for the social democratic party  
58 as the members of the LO confederation in Sweden.  
59  
60

## Conclusion

This article has investigated the electoral behaviour of trade union members in a comparative perspective. We have argued that union membership at the individual level is still beneficial for social democracy at the ballots. However, we have pleaded at the same time to pay more attention to the diversity of trade union landscapes. We therefore argued that union membership as a resource for social democracy depends on the union structure.

On the one hand, our findings based on a comparative study of 16 European countries reveal a strong left-right structuration in the party preferences of union members. Despite difficult relationships between the two arms of the labour movement, union members are still more supportive of social democratic parties. Radical left parties benefit equally from the support of union members, while the Greens stay slightly behind. Organized workers are less likely to support centre-right parties, and even less likely to support the radical right-wing parties. While several studies over the last years pointed to the capacity of radical right-wing parties to gain new support among the traditional constituencies of the left (working class), the same is not true if we consider the organizational element of the class cleavage. This suggests that organized workers are less likely be “disturbed” by the cultural appeals of the radical right (e.g. on immigration) which has proved to be decisive in the support for this party family (e.g. Oesch 2008a, Ivarsflaten 2005).

On the other hand, our findings showed that the support of union members varies depending on the union structure and can take unexpected forms. It is particularly the presence of academic/professional confederations that matters. The comparative study indicated that bourgeois and to a lesser extent Green parties gain momentum among union members in countries with strong separate professional confederations. In contrast, the presence of public/white-collar confederations clearly fosters the support for social democracy. Based on detailed information on the affiliation into different confederations, the case study on Sweden permitted to further illustrate the different party preferences of union members and their over-time variation. In the period 1985-2010, the Swedish social democratic party has constantly lost support among members of the blue-collar confederation LO. The SAP is in great difficulty in mobilising Saco members who build the strongholds of the conservative Moderates, the Liberals and the Greens. Again, the non-social democratic orientation of union members seems to be

1  
2  
3 specific to the members of academic/professional confederations. The members of the TCO  
4 white-collar confederation display an intermediate level of support for the SAP.  
5  
6

7  
8 Our article has focused on the vote choice of union members and how it varies across party  
9 systems and trade union contexts given the lack of current knowledge on this matter. Further  
10 research should devote more attention to the underlying mechanisms that we did not test.  
11 Particularly, further research should show what exactly makes union members more likely to  
12 stick to the left parties and to dislike the radical right, also by including parties' and unions'  
13 positions on both economic and cultural issues as a further conditioning variable. We should also  
14 more precisely analyse why specific white-collar confederations (e.g. Saco) do not foster the  
15 support for social democracy. Our results are ambivalent for social democracy in the context of  
16 the growth of white-collar employment. The membership in a white-collar confederation such as  
17 TCO in Sweden does not make such a big difference for social democracy in terms of electoral  
18 mobilization as compared to a "traditional" blue-collar confederation. The prospects are less good  
19 among members of professional and academic confederations where the deployment of the  
20 values of the labour movement seems to be more a challenge.  
21  
22  
23  
24  
25  
26  
27  
28  
29  
30  
31  
32  
33  
34  
35  
36  
37  
38  
39  
40  
41  
42  
43  
44  
45  
46  
47  
48  
49  
50  
51  
52  
53  
54  
55  
56  
57  
58  
59  
60

## Appendix

**Table A.1:** Classification of union confederations in 16 countries after 2001

	Social Democratic	Public Sector/White-collar	Academic/professional	Christian	Communist	Other
Austria	ÖGB	-	-	-	-	-
Belgium	FGTB	-	-	CSC	-	CGLSB
Denmark	LO	FTF	AC, FR/LH	-	-	-
Finland	SAK	STTK	AKAVA	-	-	-
France	CFDT, FO	FEN/UNS	CGC	CFTC	CGT	-
Germany	DGB	DBB	ULA	CGB	-	-
Ireland	ICTU	-	-	-	-	-
Italy	UIL	-	-	CSIL	CGIL	-
Luxembourg	OGBL	CGFP	FEP/FITC	LCGB	-	-
The Netherlands	FNV	-	MHP	CNV	-	-
Norway	LO	UNIO	AF	-	-	YS/YH
Portugal	UGT-P	-	(USI)	-	CGTP-IN	-
Spain	UGT	CSI-CSIF	-	USO	CC.OO	CGT (+ nationalist confeds)
Sweden	LO	TCO	SACO	-	-	-
Switzerland	SGB	-	-	Travail Suisse	-	-
UK	TUC	-	-	-	-	-

Source: Own classification based on Visser's (2013). We used the variables SCf11 to SCf18. Notes: The category "other" applies to all other independent and non-classifiable confederations if not mentioned otherwise; the merger of non-SGB unions in Switzerland requires only two categories in Swiss case after 2001, there would be more confederations if using data before 2002; the German DAG is not included as public sector as it merged into VERDI and joined the DGB in 2001/02; data for Portuguese USI are missing.

**Table A.2:** Classification of parties in 16 countries after 2001

	Social Democratic	Main Centre-right	Green/left-libertarian	Radical Left	Radical Right
Austria	SPÖ	ÖVP	Grüne	-	FPÖ, BZÖ
Belgium	SP.A/PS	CVP/CD PSC/CDH	Agalev/Ecolo	PvdA/PTB-UA	VB
Denmark	S	Venstre	SF	Enhedslisten	DF
Finland	SDP	Centre Party	Green League	Left Alliance, Communists	True Finns
France	PS	UMP	Les Verts	PC, LCR, LO	FN, MNR
Germany	SPD	CDU/CSU	B'90-Grüne	Die Linke	Republikaner, (NPD/DVU)
Ireland	Labour	Fianna Fáil	Green Party	Sinn Fein, Socialist Party, Left Alliance	-
Italy	La Margarita	Forza Italia	Verdi	Communists	AN, Lega Nord
Luxembourg	LSAP	CSV	Déi Gréng	La Gauche	ADR
The Netherlands	PvdA	CDA	Groen-Links	SP	PVV, LPF, LN
Norway	DNA	Høyre	SV	Rødt	FrP
Portugal	PS	PSD	CDU	Bloco de Esquerda	National Renovador
Spain	PSOE	PP	-	IU	-
Sweden	SAP	Moderaterna	Miljöpartiet	Vänsterpartiet	Sverigedemokraterna
Switzerland	SPS	FDP	GPS	Partei der Arbeit der Schweiz	SVP, Schweizer Demokraten FDS
UK	Labour	Conservative	Green Party	-	(UKIP)

Source: Own classification. Parentheses indicate too few observations for statistical analysis.

## References

- 1  
2  
3  
4  
5  
6 Afonso, A. 2015, "Choosing whom to betray: populist right-wing parties, welfare state reforms and  
7 the trade-off between office and votes", *European Political Science Review*, vol. 7, no. 2, pp. 271  
8 - 292.  
9
- 10  
11 Allern, E.H. & Bale, T. 2012, "Political parties and interest groups : Disentangling complex  
12 relationships", *Party Politics*, vol. 18, no. 1, pp. 7-25.  
13
- 14 Allern, E.H., Aylott, N. & Christiansen, F.J. 2007, "Social Democrats and trade unions in Scandinavia:  
15 The decline and persistence of institutional relationships", *European Journal of Political  
16 Research*, vol. 46, no. 5, pp. 607-635.  
17
- 18  
19 Arndt, C. 2014, "Social democracy's mobilization of new constituencies: The role of electoral  
20 systems", *Party Politics*, vol. 20, no. 5, pp. 778-790.  
21
- 22 Arndt, C. 2013, *The Electoral Consequences of Third Way Welfare State Reforms*, Amsterdam  
23 University Press, Amsterdam.  
24
- 25 Arzheimer, K. 2013, "Working-class parties 2.0? Competition between centre-left and extreme right  
26 parties" in *Class Politics and the Radical Right*, ed. J. Rydgren, Routledge, London; New York, pp.  
27 75-90.  
28
- 29 Bartolini, S. & Mair, P. [2007] 1990, *Identity, Competition and Electoral Availability*, ECPR Press,  
30 Colchester.  
31
- 32  
33 Berry, W.D., DeMeritt, J.H. & Esarey, J. 2010, "Testing for interaction in binary logit and probit  
34 models: is a product term essential?", *American Journal of Political Science*, vol. 54, no. 1, pp.  
35 248-266.  
36
- 37 Béthoux, E., Desage, G., Mias, A. & Pélisse, J. 2013, *Sociologie d'un syndicalisme catégoriel. La CFE-  
38 CGC ou la fin d'une exception ?*, Armand Colin, Paris.  
39
- 40 Blackburn, R. & Prandy, K. 1965, "White-Collar Unionization: A Conceptual Framework", *The British  
41 journal of sociology*, vol. 16, no. 2, pp. 111-122.  
42
- 43 Brambor, T., Clark, W.R. & Golder, M. 2006, "Understanding interaction models: Improving empirical  
44 analyses", *Political Analysis*, vol. 14, no. 1, pp. 63-82.  
45
- 46  
47 Crompton, R. 1976, "Approaches to the Study of White-Collar Unionism", *Sociology*, vol. 10, no. 3, pp.  
48 407-426.  
49
- 50 Ebbinghaus, B., Göbel, C. & Koos, S. 2011, "Social capital, 'Ghent' and workplace contexts matter:  
51 Comparing union membership in Europe", *European Journal of Industrial Relations* 17(2), vol.  
52 17, no. 2, pp. 107-124.  
53
- 54 Ebbinghaus, B. 2000, "Austria" in *Trade unions in Western Europe since 1945*, ed. B. Ebbinghaus and  
55 Jelle Visser, Grove's dictionaries ; Macmillan, New York, Basingstoke etc., pp. 77-110.  
56  
57  
58  
59  
60

- 1  
2  
3 Ebbinghaus, B. 1995, "The Siamese Twins: Citizenship Rights, Cleavage Formation, and Party-Union  
4 Relations in Western Europe", *International Review of Social History*, vol. 40, no. Supplement 3,  
5 pp. 51-89.  
6
- 7 Ebbinghaus, B. & Visser, J. 2000, *Trade Unions in Western Europe since 1945*, Grove's dictionaries ;  
8 Macmillan, New York, Basingstoke, etc.  
9
- 10 Evans, G. & De Graaf, N.D. 2013, "Explaining Cleavage Strength: The Role of Party Positions" in  
11 *Political Choice Matters. Explaining the Strength of Class and Religious Cleavages in Cross-*  
12 *National Perspective*, eds. G. Evans & N.D. De Graaf, Oxford University Press, Oxford.  
13
- 14 Gingrich, J. & Häusermann, S. 2015, "The decline of the working-class vote, the reconfiguration of the  
15 welfare support coalition and consequences for the welfare state", *Journal of European Social*  
16 *Policy*, vol. 25, no. 1, pp. 50-75.  
17
- 18 Gumbrell-McCormick, R. & Hyman, R. 2013, *Trade unions in Western Europe : hard times, hard*  
19 *choices*, Oxford University Press, Oxford.  
20
- 21 Häusermann, S., Picot, G. & Geering, D. 2013, "Review Article: Rethinking Party Politics and the  
22 Welfare State – Recent Advances in the Literature", vol. 43, no. 1, pp. 221-240.  
23
- 24 Höpflinger, F. 1980, *Die anderen Gewerkschaften. Angestellte und Angestelltenverbände in der*  
25 *Schweiz*, eco-verlag Zürich, Zürich.  
26
- 27 Ivarsflaten, E. 2005, "The vulnerable populist right parties: No economic realignment fuelling their  
28 electoral success", *European Journal of Political Research*, vol. 44, no. 3, pp. 465-492.  
29
- 30 Karreth, J., Polk, J.T. & Allen, C.S. 2013, "Catchall or Catch and Release? The Electoral Consequences  
31 of Social Democratic Parties' March to the Middle in Western Europe", *Comparative Political*  
32 *Studies*, vol. 46, no. 7, pp. 791-822.  
33
- 34 Kitschelt, H. 1994, *The Transformation of European Social Democracy*, Cambridge University Press,  
35 Cambridge ; New York etc.  
36
- 37 Kjellberg, A. 2013, *Union density and specialist/professional unions in Sweden*, Studies in Social  
38 Policy, Industrial Relations, Working Life and Mobility. Research Reports 2013: 2 (updated  
39 2014), Lund University.  
40
- 41 Mosimann, N. & Pontusson, J. 2014, "Bounded communities of solidarity: Union membership and  
42 preferences for redistribution". Paper presented at the UNIGE-Princeton workshop:  
43 "Democratic representation in an era of rising economic inequality", 23-24 June 2014.  
44
- 45 Nachtwey, O. & Spier, T. 2007, "Political Opportunity Structures and the Success of the German Left  
46 Party in 2005", *Debatte*, vol. 15, no. 2, pp. 123-154.  
47
- 48 OECD.Stat 2013, *OECD Statistics, Available at*  
49 [https://stats.oecd.org/Index.aspx?DataSetCode=U\\_D\\_D](https://stats.oecd.org/Index.aspx?DataSetCode=U_D_D), Source: OECD and J.Visser, ICTWSS  
50 database, version 3.0.  
51  
52  
53  
54  
55  
56  
57  
58  
59  
60

- 1  
2  
3 Oesch, D. 2008a, "Explaining Workers' Support for Right-Wing Populist Parties in Western Europe:  
4 Evidence from Austria, Belgium, France, Norway and Switzerland", *International Political Science*  
5 *Review*, vol. 29, no. 3, pp. 349-373.  
6  
7 Oesch, D. 2006, *Redrawing the Class Map. Stratification and Institutions in Britain, Germany, Sweden*  
8 *and Switzerland*, Palgrave Macmillan, London.  
9  
10 Parsons, N. 2015, "Left parties and trade unions in France", *French Politics*, vol. 13, no. 1, pp. 63-68.  
11  
12 Pasture, P. 2002, "The role of religion in Labour History" in *Class and other identities : gender, religion*  
13 *and ethnicity in the writing of European labour history*, eds. L. Heerma van Voss & M. Van der  
14 Linden, Berghahn Books, New York etc., pp. 101-132.  
15  
16 Pontusson, J. 2013, "Unionization, Inequality and Redistribution", *British Journal of Industrial*  
17 *Relations*, vol. 51, no. 4, pp. 797-825.  
18  
19 Quinn, T. 2010, "New Labour and the Trade Unions in Britain", *Journal of Elections, Public Opinion &*  
20 *Parties*, vol. 20, no. 3, pp. 357-380.  
21  
22 Rennwald, L. 2015, *Partis socialistes et classe ouvrière. Ruptures et continuités du lien électoral en*  
23 *Suisse, en Autriche, en Allemagne, en Grande-Bretagne et en France (1970-2008)*, Editions  
24 Alphil-Presses universitaires suisses, Neuchâtel.  
25  
26 Rovny, J. 2013, "Where do radical right parties stand? Position blurring in multidimensional  
27 competition", *European Political Science Review*, vol. 5, no. 1, pp. 1-26.  
28  
29 Sassoon, D. 1996, *One hundred years of socialism : the West European left in the twentieth century*,  
30 Tauris, London.  
31  
32 Streeck, W. & Hassel, A. 2003, "Trade unions as political actors" in *International Handbook of Trade*  
33 *Unions*, eds. J.T. Addison & C. Schnabel, Edward Elgar, Northampton, pp. 335-365.  
34  
35 Visser, J. 2013, *Data Base on Institutional Characteristics of Trade Unions, Wage Setting, State*  
36 *Intervention and Social Pacts, 1960-2011 (ICTWSS), Version 4.0*, Amsterdam Institute for  
37 Advanced Labour Studies, University of Amsterdam. Available at <http://www.uva-aias.net/208>,  
38 Amsterdam.  
39  
40 Weibull, L., Holmberg, S., Oscarsson, H.E., Martinsson, J. & Markstedt, E. 2014, *Super-Riks-SOM 1986-*  
41 *2012*, SOM-institutet, [www.som.gu.se](http://www.som.gu.se), Göteborgs Universitet.  
42  
43  
44  
45  
46  
47  
48  
49  
50  
51  
52  
53  
54  
55  
56  
57  
58  
59  
60