

Effects of prebiotics vs a diet low in FODMAPS in patients with functional gut disorder

Article

Accepted Version

Including peer review corrections

Huaman, J.-W., Mego, M., Manichanh, C., Cañellas, N., Cañueto, D., Seguro, H., Jansana, M., Malalgelada, C., Accarino, A., Vulevic, J., Tzortzis, G., Gibson, G. ORCID: <https://orcid.org/0000-0002-0566-0476>, Saperas, E., Guarner, F. and Azpiroz, F. (2018) Effects of prebiotics vs a diet low in FODMAPS in patients with functional gut disorder. *Gastroenterology*, 155 (4). pp. 1004-1007. ISSN 0016-5085 doi: <https://doi.org/10.1053/j.gastro.2018.06.045> Available at <https://centaur.reading.ac.uk/78945/>

It is advisable to refer to the publisher's version if you intend to cite from the work. See [Guidance on citing](#).

To link to this article DOI: <http://dx.doi.org/10.1053/j.gastro.2018.06.045>

Publisher: American Gastroenterological Association

All outputs in CentAUR are protected by Intellectual Property Rights law, including copyright law. Copyright and IPR is retained by the creators or other copyright holders. Terms and conditions for use of this material are defined in the [End User Agreement](#).

www.reading.ac.uk/centaur

CentAUR

Central Archive at the University of Reading

Reading's research outputs online

**EFFECT OF PREBIOTICS VERSUS LOW FODMAP DIET ON
FUNCTIONAL GUT SYMPTOMS**

Journal:	<i>Gut</i>
Manuscript ID	gutjnl-2018-316046
Article Type:	Original Article
Date Submitted by the Author:	15-Jan-2018
Complete List of Authors:	Huaman, Jose; Hospital General de Catalunya, Digestive Mego, Marianela; Hospital General Vall d'Hebron, Digestive System Manichanh, chaysavanh; Hospital General Vall d'Hebron, Canyellas, Nicolau; Universitat Rovira i Virgili Cañueto, Daniel; Universitat Rovira i Virgili Segurola, Hegoi; University Hospital Vall d'Hebron, Nutritional Support Unit Jansana, Marta; University Hospital General of Catalonia Malagelada, Carolina; Hospital General Vall d'Hebron, Digestive Accarino, Anna; Hospital General Vall d'Hebron, Vulevic, Jelena; University of Reading Tzortziz, George; University of Reading Gibson, Glenn; UNIVERSITY OF READING, FOOD MICROBIAL SCIENCES UNIT (FMSU) Saperas, Esteban; Hospital Universitari General de Catalunya Guarner, Francisco; University Hospital Vall d'Hebron, Digestive System Research Unit Azpiroz, Fernando; HOSPITAL GENERAL VALL DHEBRON
Keywords:	PREBIOTIC, DIET, GASTROINTESTINAL MOTILITY

EFFECT OF PREBIOTICS VERSUS LOW FODMAP DIET ON FUNCTIONAL GUT SYMPTOMS

Short title: Prebiotics versus FODMAP diet

Jose-Walter Huaman^{1,2}, Marianela Mego¹, Chaysavanh Manichanh¹, Nicolau Cañellas^{3,4}, Daniel Cañueto³, Hegoi Seguro⁵, Marta Jansana⁶, Carolina Malagelada¹, Anna Accarino¹, Jelena Vulevic⁷, George Tzortzis⁷, Glenn Gibson⁸, Esteban Saperas², Francisco Guarner¹, Fernando Azpiroz¹.

1. Digestive System Research Unit, University Hospital Vall d'Hebron; Centro de Investigación Biomédica en Red de Enfermedades Hepáticas y Digestivas (Ciberehd); Universitat Autònoma de Barcelona, 08193 Bellaterra (Cerdanyola del Vallès), Spain.
2. Department of Gastroenterology, University Hospital General of Catalonia, San Cugat del Valles, Barcelona, Spain.
3. Metabolomics Platform, Universitat Rovira i Virgili, Campus Sescelades; Tarragona, Spain.
4. Centro de Investigación Biomédica en Red de Diabetes y Enfermedades Metabólicas (Ciberdem).
5. Nutritional Support Unit, University Hospital Vall d'Hebron, Barcelona, Spain.
6. Department of Endocrinology and Nutrition, University Hospital General of Catalonia, San Cugat del Valles, Barcelona, Spain.
7. Clasado Research Services Ltd, Science and Technology Centre, University of Reading, Early Gate, Reading, UK.
8. Food Microbial Sciences Unit, Department of Food and Nutritional Sciences, The University of Reading, Whiteknights, Reading, UK

Address for correspondence:

Fernando Azpiroz, M.D.
Digestive System Research Unit
Hospital General Vall d'Hebron
08035-Barcelona, Spain
Phone: (34) 93 274 62 22
Fax: (34) 93 489 44 56
e-mail: azpiroz.fernando@gmail.com

Word count: 3941

1
2
3
4
5
6
7
8
9
10
11
12
13
14
15
16
17
18
19
20
21
22
23
24
25
26
27
28
29
30
31
32
33
34
35
36
37
38
39
40
41
42
43
44
45
46
47
48
49
50
51
52
53
54
55
56
57
58
59
60
ABSTRACT

Objective. To compare the effects of a prebiotic supplement versus a low FODMAP diet in patients with functional gut disorders. **Design.** Two-centre, parallel, randomized, double-blind study comparing the effects of a prebiotic supplement (2.8 g/day Bimuno, Clasado Biosciences, Jersey, Channel Islands) with a placebo diet (prebiotic group) versus and a placebo supplement (2.8 g per day xylose) with a low FODMAP diet (LFD group). The study consisted of 1 week of pretreatment (days 1-7), 4 weeks of treatment (days 8-35) and 2 weeks of post-treatment follow-up (days 36-49). All patients received dietary instructions in similar intervention visits. The following outcomes were measured: a) the number of daytime gas evacuations over the course of 2 days were measured by means of an event marker; b) the volume of gas evacuated over the course of 4 hours after consumption of a probe meal were measured via a rectal tube; and c) the microbiota composition was measured by faecal Illumina MiSeq sequencing.

Results. Both treatments improved the symptoms to a similar extent. After termination of the prebiotic treatment, the symptomatic improvement persisted for 2 weeks. In contrast, after termination of the LFD diet, a rebound was observed, and by 2 weeks post-treatment, the symptoms were more severe than during the treatment phase. In the prebiotic group, the counts of bifidobacteria increased, and the counts of sulphate-producing species decreased, while the opposite effects were observed in the LFD group.

Conclusion. Both the LFD and the B-GOS prebiotic administration were similarly effective at treating gas-related symptoms in patients with functional gut disorders. However, both strategies had different consequences after treatment discontinuation; while the

1
2
3
4
5 improvement of symptoms persisted 2 weeks after prebiotic administration was
6
7 discontinued, the symptoms relapsed after the termination of the LFD.
8
9

10
11
12 **Keywords:** intestinal gas, microbiota, prebiotics, low FODMAP diet, functional
13
14 gastrointestinal symptoms
15
16
17
18
19
20
21
22
23
24
25
26
27
28
29
30
31
32
33
34
35
36
37
38
39
40
41
42
43
44
45
46
47
48
49
50
51
52
53
54
55
56
57
58
59
60

Summary 'box'

1. What is already known about this subject?
 - Diets low in fermentable residues, such as low FODMAP diet, improve gas-related symptoms in patients with functional gut disorders.
 - Paradoxically, a galactooligosaccharide prebiotic, B-GOS, that is not absorbed in the small bowel and is selectively fermented by colonic microbiota, produces a similar effect on gas-related symptoms.
2. What are the new findings?
 - Both a low FODMAP diet (plus a placebo supplement; 2.8 g per day xylose) and a prebiotic supplement (2.8 g/day Bimuno, Clasado Biosciences, Jersey, Channel Islands; plus a placebo diet) were similarly effective at treating gas-related symptoms in patients with functional gut disorders.
 - However, both strategies had different consequences after treatment discontinuation; while the improvement of symptoms persisted 2 weeks after prebiotic administration was discontinued, the symptoms relapsed after the termination of the
3. How might it impact on clinical practice in the foreseeable future?
 - Since dietary restrictions, particularly the low FODMAP diet, are cumbersome to follow, these results present an alternative patient management strategy.
 - Furthermore, given the sustained effect of B-GOS compared to the reversible effects of the low FODMAP diet, intermittent treatment with B-GOS might represent an additional advantage over the continuous treatment required with the low

1
2
3
4
5
6
7
8
9
10
11
12
13
14
15
16
17
18
19
20
21
22
23
24
25
26
27
28
29
30
31
32
33
34
35
36
37
38
39
40
41
42
43
44
45
46
47
48
49
50
51
52
53
54
55
56
57
58
59
60

FODMAP diet.

Confidential: For Review Only

INTRODUCTION

A significant proportion of patients with functional gut disorders complain of symptoms that they attribute to intestinal gas, such as flatulence, abdominal bloating, distension and borborygmi¹. A series of studies has shown that diets low in fermentable residues, i.e., those that contain low amounts of products that escape small bowel absorption and are fermented by colonic microbiota, improve gas-related symptoms in these patients. Similar effects have been observed with different diets²⁻⁵, among which a diet low in fermentable oligo-, di-, and monosaccharides and polyols (FODMAPs) has become particularly popular and widely used^{4,6}. Paradoxically, a galactooligosaccharide prebiotic, B-GOS, that is not absorbed in the small bowel and is selectively fermented by colonic microbiota, produces a similar effect on gas-related symptoms⁷. Initially, this product increases the fermentive activity of microbiota and, consequently, increases gas production, but this effect declines after a relatively short adaptation period (1-2 weeks) with a shift in microbiota metabolism towards more efficient, low-gas producing pathways⁸. In contrast, some data have indicated that in the long run, a low FODMAP diet with restricted fermentable substrates may negatively affect gut microbiota¹⁰⁻¹².

Based on these data, we hypothesized that both approaches, i.e., a low FODMAP diet and a B-GOS prebiotic supplement, would improve gas-related symptoms during the period of administration but would have different consequences after discontinuation, due to their specific effects on gut microbiota. Hence, our aim was to compare the effects of a low FODMAP diet versus the B-GOS prebiotic supplement on gas-related symptoms and colonic microbiota during a 4-week treatment period and a 2-week post-treatment period.

1
2
3
4
5 To this aim, consecutive patients complaining of excessive anal gas evacuation, i.e.,
6 flatulence, were recruited. We compared the effects of a low FODMAP diet plus a placebo
7 supplement versus a placebo diet (Mediterranean-type) plus the B-GOS prebiotic
8 supplement on gas-related symptoms and anal gas evacuation. The effects of the
9
10
11
12
13
14
15
16
17
18
19
20
21
22
23
24
25
26
27
28
29
30
31
32
33
34
35
36
37
38
39
40
41
42
43
44
45
46
47
48
49
50
51
52
53
54
55
56
57
58
59
60

To this aim, consecutive patients complaining of excessive anal gas evacuation, i.e., flatulence, were recruited. We compared the effects of a low FODMAP diet plus a placebo supplement versus a placebo diet (Mediterranean-type) plus the B-GOS prebiotic supplement on gas-related symptoms and anal gas evacuation. The effects of the treatments were evaluated during basal conditions, after a 3-day challenge diet and after a probe meal.

MATERIAL AND METHODS

Study design

This study was a randomized, two-centre, parallel and double-blind study performed between August 2014 and July 2015 in 2 tertiary care referral centres. The study protocol was registered with ClinicalTrials.gov (NCT02210572). All co-authors had access to the study data and reviewed and approved the final manuscript. The study compared the effect of a prebiotic supplement plus a placebo diet (prebiotic group) versus a placebo supplement plus a low FODMAP diet (LFD group; see sections on supplement products and treatment diets below). The study lasted 7 weeks (49 days) with 3 phases: a 1-wk pretreatment phase (days 1-7), a 4-wk treatment phase (days 8-35) and 2-wk post-treatment phase (days 36-49) (Figure 1).

The primary outcome was the effect of the treatments on gut microbiota composition, specifically the relative abundance of bifidobacteria. Secondary outcomes were intestinal gas production, as an index of microbiota activity, and digestive sensations.

Randomization and masking

Participants were randomized using a block design (n=10 per block) by a computer-generated randomization list. Participants did not know which treatment they were assigned, and all patients received dietary instructions following the same schema of intervention visits. The investigators performing the tests and the clinical follow-up were blinded to the intervention (supplement and diet).

Participants

Patients fulfilling the criteria of having a functional gastrointestinal disorder and complaining of excessive anal gas evacuation (i.e., flatulence) (35 women, 5 men; age range 24 - 73 years) participated in the study. Antibiotic consumption during the previous 2 months was an exclusion criterion. Participants were instructed to fill out a clinical questionnaire to evaluate bowel habits and gastrointestinal symptoms. Subjects gave written informed consent to participate in the study. The protocol for the study had previously been approved by the Institutional Review Board of University Hospital Vall d'Hebron.

Supplement product

During the treatment phase (days 8-35) participants consumed 1 sachet per day of either prebiotic (2.8 g per day Bimuno containing 1.37g B-GOS, Clasado Biosciences , Jersey, Channel Islands) or placebo (2.8 g xylose).

Dietary instructions

The treatment diet, either a low FODMAP or a placebo diet, was administered during the first 23 days of the treatment phase (days 8-31). Participants were put on a standard, highly flatulogenic diet during 3-day periods at the end of the pretreatment phase (days 5-7) and the treatment phase (days 33-35). During the first 4 days of the pretreatment phase (days 1-4) and the post-treatment phase (days 36-49), the participants consumed their habitual diet. For the duration of the study, patients were not allowed to consume any fermented dairy products or any tablets, pills or food supplements containing pre- or probiotics other than those provided. A dietician provided dietary instructions and checked adherence to the diets using structured consumption questionnaires.

Treatment diets

Low FODMAP diet. The food list for the diet was based on published information adapted to local eating habits¹³⁻¹⁵. The diet specifically excluded a) dairy products, b) fruit, including apples, pears, peaches, apricots, cherries, mangoes, watermelon, melon, and prunes, c) legumes, including chickpeas, white beans, lentils, and soya beans, d) vegetables, including artichokes, asparagus, beetroot, Brussels sprouts, broccoli, cabbage, garlic, leeks, onions, peas, lettuce, and cauliflower, e) cereals, including bread, rye, and oats, and f) sweeteners.

Placebo diet. The diet was balanced and Mediterranean-type², including the following every day: a) meat, fowl, fish, or eggs, b) vegetables, salad or legumes, c) bread, rice, pasta, potatoes or cereals, d) dairy products, and e) fruits.

Challenge diet

The challenge diet consisted of: a) *breakfast* of wholemeal cookies (39 g) plus coffee, tea and/or milk, b) *lunch* of white beans (200 g), mixed vegetables (250 g) or chickpeas (200 g) and wholemeal bread (50 g), plus meat, fowl or fish and fruit (banana, figs peaches or prunes), and c) *dinner* of vegetable soup (200 mL), wholemeal bread (50 g) and fruit (banana, figs, peaches or prunes).

Outcomes

The outcomes were measured during 3-day periods at 5 time points throughout the study: in the pretreatment phase just before and during the challenge diet (days 2-4 and 5-7, respectively), in the treatment phase just before and during the challenge diet (days 30-32 and 33-35, respectively), and at the end of the post-treatment phase (days 47-49) (Figure 1).

Daily symptom questionnaire

During the 3 days of each evaluation period, the participants were instructed to fill out daily questionnaires that included the following parameters: (a) subjective sensations of flatulence (defined as anal gas evacuation), abdominal bloating (pressure/fullness), abdominal distension (sensation of girth increase), borborygmi and abdominal discomfort/pain using 0–10 analogue scales, (b) digestive well-being using a 10-point scale graded from +5 (extremely pleasant sensation/satisfaction) to –5 (extremely unpleasant

1
2
3
4
5 sensation/dissatisfaction), and (c) mood on similar scale graded from +5 (very positive) to
6
7 -5 (very negative). For each symptom, the scores for each 3-day period were averaged.
8
9
10 This questionnaire has been previously used and has been shown to be sensitive enough
11
12 to detect the effects of dietary interventions in different populations ^{2 16-18}.
13

14 Number of anal gas evacuations

15
16
17 The number of anal gas evacuations during the last 2 days of each evaluation
18
19 period were measured and averaged. Participants were instructed to carry an event marker
20
21 (Hand Tally Counter No 101, Digi Sport Instruments, Shanggiu, China) during the day and
22
23 to use it to register each passage of anal gas. This method has been previously used with
24
25 reproducible and consistent results ^{2 8 9 16}; furthermore, studies measuring the number of
26
27 gas evacuations by an event marker and continuously recording anal gas evacuations have
28
29 shown a very good correlation between the results of the two methods ($R>0.95$; $p<0.05$) ¹⁹⁻
30
31
32
33
34
35
36
37
38
39
40
41
42
43
44
45
46
47
48
49
50
51
52
53
54
55
56
57
58
59
60

38 Response to a probe meal

40
41 The test was performed the day after the pretreatment and treatment phases.
42
43 Participants reported to the laboratory after an overnight fast and consumed a probe meal.
44
45 The probe meal consisted of a ham omelette (1 egg, 30 g sliced ham cooked with 5 g oil),
46
47 46 g of white bread, 10 g of butter, 25 g of jam and 200 mL of fruit juice (400 Kcal, 350 mL
48
49 total volume, 1.5 g of fibre).

51
52 *The volume of gas evacuated by anus* was measured for 4 h after the probe meal,
53
54 as previously described ^{16 23 24}. Briefly, gas was collected using a rectal balloon catheter (20
55
56
57
58
59
60

1
2
3
4
5 F Foley catheter, Bard, Barcelona, Spain) connected via a gas-tight line to a barostat, and
6
7 the volume was continuously recorded. The intrarectal balloon was inflated with 5 mL of
8
9 water to prevent anal gas leaks.
10

11
12 *Patients' perceptions of abdominal sensations* were measured every 30 min during
13
14 the 4-h gas collection period using the same scales as described above: 0 to 10 scales for
15
16 scoring abdominal bloating (pressure/fullness), abdominal distension (sensation of girth
17
18 increase), borborygmi and abdominal discomfort/pain and – 5 to + 5 scales for scoring
19
20 digestive well-being and mood.
21
22

23 24 25 26 Metabolomic analysis

27
28 Urine was collected for 24 h during the last day of the pretreatment and treatment
29
30 periods (days 7 and 35, respectively) from 22 patients, with 11 from each treatment group.
31
32 For each sample, a one-dimensional ¹H NMR spectrum was acquired according to the
33
34 standard recommendations^{25 26}. Analyses of the histamine levels and P-cresol level in the
35
36 urine samples were performed by mass spectroscopy.
37
38
39
40
41

42 Microbiota composition

43
44 Faecal samples were collected from 40 patients during the pretreatment, treatment
45
46 and post-treatment phases (days 5, 32 and 49, respectively) (Figure 1). After collection and
47
48 homogenization, the samples were immediately frozen by the participants in their home
49
50 freezers at -20 °C and later brought to the laboratory in a freezer pack, where they were
51
52 stored at -80°C. Microbiota analysis was performed as previously described (see
53
54
55
56
57
58
59
60

Supplemental material).

Statistical analysis

Sample size calculation. Sample size calculation was performed based on the effect of the prebiotic B-GOS on fecal bifidobacteria. In previous studies⁸, B-GOS consumption increased relative abundance of bifidobacteria in 13 out of 20 subjects (65%); by contrast, low FODMAP diet did not induce this effect¹². Assuming a bifidobacteria increase in 65% of patients on B-GOS and in less than 15% of patients on low FODMAP diet, it was estimated that a sample size of 18 individuals per group would provide a 90% power to detect statistical differences between groups.

Metabolomic analysis. Differences from pre- and post-treatment spectra were used for comparisons between groups.

Microbiota analysis. The Shapiro-Wilk test was used to assess the normality of the data, and pairwise comparisons were made between the study groups with the non-parametric Kruskal-Wallis one-way analysis of variance test, which compares means between groups. A false discovery rate (FDR) of corrected p-values was taken into account when considering the significance of the results.

Overall comparisons. In each group, the effect of treatment (treatment minus pretreatment) was measured at the baseline, after the challenge diet and after the probe meal. The effects of treatment were compared between the prebiotic and the LFD group. The means (\pm SE) of the measured variables were calculated. The Kolmogorov-Smirnov

1
2
3
4
5 test was used to check the normality of the data distribution. Parametric normally
6 distributed data were compared by Student's *t*-test for paired or unpaired data; otherwise,
7
8 the Wilcoxon signed-rank test was used for paired data, and the Mann-Whitney *U* test was
9
10 used for unpaired data. The association of parameters was analysed using linear
11
12 regression.
13
14
15
16
17
18

19 RESULTS

20 **Demographics**

21
22 Forty-four patients were selected and included in the study (Figure 2 and Table 1).
23
24 All patients (n=44) had a functional disorder diagnosis based on the Rome III criteria^{27 28}
25
26 (Table 1). No demographic or clinical differences were found between the prebiotic and
27
28 LFD groups (Table 1).
29
30
31
32
33
34

35 **Symptoms and gas evacuation**

36
37 Pre-treatment phase. On their habitual diets, the patients exhibited mild to moderate
38 symptoms (Figure 3) and recorded 15±1 evacuations of gas during the daytime (Figure 4).
39
40 No significant differences in the above parameters were detected between the study
41
42 groups (Figures 3, 4).
43
44
45
46

47 Treatment phase. Both treatments improved the symptom scores in the daily
48 questionnaires (Figure 3). The LFD diet, but not the prebiotic treatment, significantly
49 reduced the number of gas evacuations (Figure 4). No differences in the effect of treatment
50
51 (treatment values minus pretreatment values) were detected between the study groups
52
53
54
55
56
57
58
59
60

1
2
3
4
5 (p=0.287 by MANOVA).
6

7
8 Post-treatment phase. With the prebiotic treatment, the symptomatic improvement
9
10 was maintained 2 weeks after treatment termination; to note, digestive well-being further
11 improved. In contrast, after the LFD diet was terminated, a rebound was observed, and by
12
13 2 weeks post-termination, the symptoms were greater than during treatment phase (Figure
14
15 3), although the change (from treatment values to post-treatment values) was not
16
17 significantly different between groups (p=0.091 by MANOVA). In the prebiotic group, the
18
19 number of gas evacuations after treatment was slightly (not significantly) lower than in the
20
21 pretreatment and the treatment phases. In contrast, in the LFD group, the number of gas
22
23 evacuations after treatment increased compared to the treatment level (p=0.056 vs
24
25 treatment; p=0.059 vs change in prebiotic group) (Figure 4).
26
27
28
29
30
31
32

33 **Response to challenge diet**

34
35 Pre-treatment phase. The challenge diet increased the intensity of symptoms
36
37 similarly in both groups (Figure 5). The number of daytime gas evacuations increased in
38
39 the prebiotic and the LFD groups (by 12±4 evacuations and 6±2 evacuations, respectively;
40
41 p=0.160 between groups; p≤0.005 vs habitual diet for both).
42
43

44
45 Treatment phase. The effect of the challenge diet on symptoms (changes in daily
46
47 symptoms) during treatment was similar that observed before treatment in both groups and
48
49 the effect was not different between treatments (p=0.148 by MANOVA) (Figure 5). Since
50
51 the symptoms during both treatments were at lower levels than in the pretreatment phase,
52
53 the symptoms due to the challenge diet were lower during in the treatment phase than
54
55
56
57
58
59
60

1
2
3
4
5 during the pretreatment phase in both groups. The increase in the number of gas
6
7
8 evacuations in response to the challenge diet was similar to the increase observed during
9
10 the pretreatment phase in both groups (increase of 12 ± 3 evacuations in the prebiotic group
11
12 and 7 ± 2 evacuations in the LFD group; $p=0.117$ between groups; $p\leq 0.002$ vs habitual diet
13
14 for both).
15
16
17
18

19 **Response to probe meal**

20
21 Pre-treatment phase. After the probe meal, participants reported symptoms (Figure
22
23 6), and both the symptom scores as well as the total volume of gas evacuated by anus in
24
25 the 4-hour postprandial period (149 ± 20 mL in the prebiotic group and 173 ± 22 mL in the
26
27 LFD group) were similar in both groups (Figure 6).
28
29

30
31 Treatment phase. In both groups, the probe meal produced the same volume of gas
32
33 in the treatment phase (140 ± 17 mL in prebiotic and 160 ± 29 mL in LFD group) and in the
34
35 pretreatment phase, but overall, the tolerance of the probe meal was somewhat better
36
37 during the treatment phase in both groups (Figure 6), without differences between groups
38
39 ($p=0.570$ by MANOVA).
40
41
42
43
44

45 **Metabolomic analysis**

46
47 The initial analysis was performed using a fingerprinting approach. Significant
48
49 differences between both treatments were detected in five integrated regions of the
50
51 spectrum. These regions were located at 7.911-7.898 ppm, 4.165-4.148 ppm, 2.789-2.786
52
53 ppm, 2.003-1.956 ppm, and 1.677-1.662 ppm. Using the Human Metabolome Database
54
55
56
57
58
59
60

1
2
3
4
5 (HMDB) ²⁹ and STOCYSY ³⁰, only two of these regions were identified as previously
6 described metabolites, xanthine and an unsaturated fatty acid. A partial least squares
7 discriminant analysis (PLS-DA) classifi using the five integrated regions that were different
8 between groups showed good discrimination between treatments: All patients were
9 correctly classified according to their treatment. In addition to the integrated regions, the
10 metabolite 4-deoxythreonic acid, a metabolite previously found to decrease in urine
11 incubated with *E. coli*, was found to have significant weight in the model ³¹. No significant
12 differences were found in the concentrations of histamine or P-cresol in urine samples
13 according to treatment or group.
14
15
16
17
18
19
20
21
22
23
24
25
26
27

28 **Changes in faecal microbiota**

29
30
31 In the LFD group, treatment was associated with a decrease in the relative
32 abundance of unknown Clostridiales and *Bacteroides* species and an increase in the
33 abundance of species belonging to *Ruminococcaceae* (mucin degraders),
34
35
36
37
38 *Desulphovibrionaceae* (sulphate-reducing bacteria) and *Enterobacteriaceae* families (Table
39 2). In the post-treatment phase, changes in several bacterial taxa were detected, including
40 a remarkable increase in the abundance of members of the *Bifidobacterium* genus (Table
41 2). In the prebiotic group, the abundance of two *Lachnospiraceae* species increased during
42 treatment (Table 3). There was a reduction in the abundance of *Parabacteroides*,
43
44
45
46
47 *Oscillospira*, *Barnesiellaceae*, *Christensenellaceae*, and *Bilophila wadsworthia* species.
48
49
50
51
52 Figure 7 shows trade-off in response to the interventions between the abundance of
53
54 *Bilophila wadsworthia* and that of bifidobacteria. In the LFD group, the counts of
55
56
57
58
59
60

1
2
3
4
5 bifidobacteria went down during treatment, but rebounded in the post-treatment phase,
6
7
8 whereas in the prebiotic group, they showed a positive change during treatment and no
9
10 change after treatment. In contrast, the change in the counts of *Bilophila wadsworthia*
11
12 during treatment was positive in the LFD group and negative in the prebiotic group, and the
13
14 trend persisted in the post-treatment phase. Interestingly, in the LFD group, the increase in
15
16 gas frequency in the post-treatment phase correlated with the increase in *Bilophila*
17
18 *wadsworthia* abundance ($r=0.48$, $p=0.050$), and this correlation was absent in the prebiotic
19
20 group ($r=0.07$, $p=0.796$).
21
22
23
24
25

26 DISCUSSION

27
28 Our study shows that both the LFD and the B-GOS prebiotic supplement are
29
30 similarly effective in the treatment of gas-related symptoms in patients with functional gut
31
32 disorders. However, both strategies had different consequences after treatment
33
34 discontinuation. While the improvement of symptoms persisted 2 weeks after prebiotic
35
36 administration, symptoms relapsed after discontinuing the LFD.
37
38
39

40 Most likely, the improvement in symptoms in response to each treatment is achieved
41
42 via different mechanisms. The clinical outcome associated with the LFD in our study is
43
44 similar to that previously reported⁴⁶¹¹. The LFD reduced gas production, and conceivably
45
46 this effect contributed to the improvement of gas-related symptoms. Diets low in residues
47
48 are associated with lower volumes of colonic content³², and conceivably this is also the
49
50 case with the LFD. Intestinal loads of FODMAPs have been shown to increase the volume
51
52 of content within the small bowel³³, but whether the intestinal content on an LFD is lower
53
54
55
56
57
58
59
60

1
2
3
4
5 than on a normal diet without an excess of FODMAPs remains unproven.
6
7

8 The improvement of gas-related symptoms due to supplementation with the B-GOS
9 prebiotic in our study is consistent with previous observations⁷. However, the mechanisms
10 by which B-GOS improves symptoms are not clear. As described above, B-GOS is a non-
11 absorbable, fermentable product; consequently, it serves as substrate for colonic
12 microbiota and at initial administration increases intestinal gas production. However,
13 continuous B-GOS administration elicits an adaptation phenomenon, resulting in a
14 progressive decrease in gas production back to pre-administration levels by 7-10 days of
15 treatment^{8 9} and a change in gut microbiota profile^{7 8}, which is likely the cause of
16 adaptation. Furthermore, B-GOS has shown anti-inflammatory effects, and it could also
17 reduce intestinal hypersensitivity, a characteristic feature in patients with functional gut
18 disorders that leads to symptoms in response to normal gut contents^{34 35}. It is not known
19 whether the effects of B-GOS administration on symptoms and microbiota are product-
20 specific or are common to other prebiotics.
21
22
23
24
25
26
27
28
29
30
31
32
33
34
35
36

37 Symptom improvement persisted 2 weeks after termination of B-GOS
38 administration. This post-administration effect is probably related to the changes in
39 microbiota, and the current data do not indicate for how long it may persist. In contrast to
40 the post-treatment effect of B-GOS, symptoms relapsed 2 weeks after LFD discontinuation,
41 reflecting a cessation of the influence of LFD on the intraluminal environment when
42 replaced by the patients' habitual diets.
43
44
45
46
47
48
49
50

51 Potentially beneficial effects of B-GOS on microbiota include the increase in
52 *Lachnospiraceae*, which produce butyrate and other short chain fatty acids, and the
53
54
55
56
57
58
59
60

1
2
3
4
5 decrease in *Bilophila wadsworthia*, a sulphate-reducing bacterium that has been found to
6 play a role in individuals complaining of excess flatus ¹⁶ and has been associated with
7 intestinal inflammation in experimental models ³⁶. The changes in microbiota induced by
8 LFD were distinctively different than those induced by B-GOS, particularly in relation to the
9 abundance of bifidobacteria (decreased with LFD and increased with B-GOS) and *Bilophila*
10 *wadsworthia* (increased with LFD and decreased with B-GOS).
11
12
13
14
15
16
17
18

19 As in previous studies in patients with functional gut disorders ¹⁶, the challenge diet
20 in the pretreatment period substantially increased anal gas evacuations and symptom
21 scores, and a similar increase was observed in the pretreatment and treatment periods.
22 However, since the patients felt better with the treatments, the challenge was better
23 tolerated in terms of absolute symptom scores. In contrast to what we anticipated,
24 tolerance of the challenge diet was similar with both treatments; conceivably, the challenge
25 was too strong and overcame the potential influences of the treatments.
26
27
28
29
30
31
32
33
34

35 Likewise, the probe meal was better tolerated, i.e., with lower postprandial symptom
36 scores, during both treatments than before both treatments, but without differences
37 between groups. Furthermore, the treatments did not affect the volume of gas produced
38 after the probe meal. This unexpected lack of differences could be because the probe meal
39 was administered after 3 days on the challenge diet, which provided a heavy colonic load
40 and blurred the effect of treatment. Indeed, intestinal gas production depends not only on
41 recent but also on previous fermentable residue loads ³⁷.
42
43
44
45
46
47
48
49
50

51 The treatments produced different changes in urine metabolites. Although the
52 significance of the changes is difficult to ascertain, the metabolomic analysis provided a
53
54
55
56
57
58
59
60

1
2
3
4
5 good discrimination between groups, which served as an indirect index of the adherence to
6 the dietary instructions. Previous studies have shown that a low FODMAP diet modulates
7 histamine levels in urine ³⁸ and that P-cresol, a bacterial protein fermentation metabolite,
8 reflects the influence of diet on amino acid fermentation in the colon ³⁹; however, no
9 changes in these metabolites were detected in our study.
10
11
12
13
14
15
16

17 From a practical perspective, our study indicates that in the short run, daily
18 administration of B-GOS prebiotic is equally effective as an LFD. Since dietary restrictions,
19 particularly the LFD, are cumbersome to follow, these results present an alternative patient
20 management strategy. Furthermore, given the sustained effect of B-GOS compared to the
21 reversible effects of LFD, intermittent treatment with B-GOS might represent an additional
22 advantage over the continuous treatment required with LFD. Recent data indicate that
23 simultaneous administration of a probiotic may prevent the potentially deleterious
24 influences of LFD on microbiota ¹¹. Possibly, the combination of different therapies may
25 have synergistic effects. Gas-related symptoms may benefit from individualized treatment
26 with diet, prebiotics and/or probiotics in single or combined therapy. Ideally, individual
27 treatment strategies would be based on biological markers, including microbiota metabolic
28 activity and composition.
29
30
31
32
33
34
35
36
37
38
39
40
41
42
43
44
45
46
47
48
49
50
51
52
53
54
55
56
57
58
59
60

Statements

Acknowledgments. The authors thank Gloria Santaliesra for secretarial assistance.

Writing Assistance. American Journal Experts for English editing of the manuscript (Certificate Verification Key; 2B02-9D8E-A5F0-B802-AAAC) funded by SAF 2016-76648-R

Grants. The present study was supported by the Spanish Ministry of Economy and Competitiveness (Dirección General de Investigación Científica y Técnica, SAF 2016-76648-R); Ciberehd is funded by the Instituto de Salud Carlos III.

Authorship Statement:

Guarantor of the article: Fernando Azpiroz

Author contributions:

JWH: study management, conduction of experiments and data analysis.

MM: study management, conduction of experiments and data analysis.

C Manichanh: microbiota analysis

DC: metabolomic analysis

NC: metabolomic analysis

HS: dietary guidance

MJ: dietary guidance

C Malagelada: metabolomic analysis

1
2
3
4
5 AA: supervision of studies.
6

7
8 JV: study design, interpretation of results, manuscript revision
9

10 GT: study design, interpretation of results
11

12 GG: study design, interpretation of results, manuscript revision
13

14 ES: study design, manuscript revision
15

16
17 FG: study design, data interpretation manuscript revision
18

19 FA. study design, and manuscript preparation.
20

21 All authors approved the final draft of the manuscript.
22
23
24
25

26 **Competing interests**

27
28 Jelena Vulevic, employee Clasado.
29

30 George Tzortzis, employee Clasado.
31

32
33 Glen Gibson, Francisco Guarner and Fernando Azpiroz served as advisory board
34 members for Clasado.
35
36

37 Rest of authors, no competing interests declared.
38
39
40
41
42
43
44
45
46
47
48
49
50
51
52
53
54
55
56
57
58
59
60

References

1. Azpiroz F, Guyonnet D, Donazzolo Y, et al. Digestive Symptoms in Healthy People and Subjects With Irritable Bowel Syndrome: Validation of Symptom Frequency Questionnaire. *J Clin Gastroenterol* 2014
2. Azpiroz F, Hernandez C, Guyonnet D, et al. Effect of a low-flatulogenic diet in patients with flatulence and functional digestive symptoms. *Neurogastroenterol Motil* 2014;26(6):779-85.
3. Bohn L, Storsrud S, Liljebo T, et al. Diet Low in FODMAPs Reduces Symptoms of Irritable Bowel Syndrome as Well as Traditional Dietary Advice: A Randomized Controlled Trial. *Gastroenterology* 2015;149(6):1399-407.
4. Halmos EP, Power VA, Shepherd SJ, et al. A Diet Low in FODMAPs Reduces Symptoms of Irritable Bowel Syndrome. *Gastroenterology* 2014;146(1):67-75.
5. Eswaran SL, Chey WD, Han-Markey T, et al. A Randomized Controlled Trial Comparing the Low FODMAP Diet vs. Modified NICE Guidelines in US Adults with IBS-D. *Am J Gastroenterol* 2016;111(12):1824-32. doi: 10.1038/ajg.2016.434
6. Krogsgaard LR, Lyngesen M, Bytzer P. Systematic review: quality of trials on the symptomatic effects of the low FODMAP diet for irritable bowel syndrome. *Aliment Pharmacol Ther* 2017;45(12):1506-13. doi: 10.1111/apt.14065
7. Silk DB, Davis A, Vulevic J, et al. Clinical trial: the effects of a trans-galactooligosaccharide prebiotic on faecal microbiota and symptoms in irritable bowel syndrome. *Aliment Pharmacol Ther* 2009;29(5):508-18.
8. Mego M, Manichanh C, Accarino A, et al. Metabolic adaptation of colonic microbiota to

- 1
2
3
4
5 galactooligosaccharides: a proof-of-concept-study. *Aliment Pharmacol Ther*
6
7
8 2017;45(6):670-80.
9
- 10 9. Mego M, Accarino A, Tzortzis G, et al. Colonic gas homeostasis: Mechanisms of
11
12 adaptation following HOST-G904 galactooligosaccharide use in humans.
13
14 *Neurogastroenterol Motil* 2017;29(9) doi: 10.1111/nmo.13080
15
16
- 17 10. Staudacher HM, Lomer MC, Anderson JL, et al. Fermentable carbohydrate restriction
18
19 reduces luminal bifidobacteria and gastrointestinal symptoms in patients with
20
21 irritable bowel syndrome. *J Nutr* 2012;142(8):1510-18.
22
23
- 24 11. Staudacher HM, Lomer MCE, Farquharson FM, et al. A Diet Low in FODMAPs
25
26 Reduces Symptoms in Patients With Irritable Bowel Syndrome and A Probiotic
27
28 Restores Bifidobacterium Species: A Randomized Controlled Trial.
29
30 *Gastroenterology* 2017;153(4):936-47. doi: 10.1053/j.gastro.2017.06.010
31
32
- 33 12. Halmos EP, Christophersen CT, Bird AR, et al. Diets that differ in their FODMAP
34
35 content alter the colonic luminal microenvironment. *Gut* 2015;64(1):93-100.
36
37
- 38 13. Muir JG, Rose R, Rosella O, et al. Measurement of short-chain carbohydrates in
39
40 common Australian vegetables and fruits by high-performance liquid
41
42 chromatography (HPLC). *J AgricFood Chem* 2009;57(2):554-65.
43
44
- 45 14. Biesiekierski JR, Rosella O, Rose R, et al. Quantification of fructans, galacto-
46
47 oligosaccharides and other short-chain carbohydrates in processed grains and
48
49 cereals. *JHumNutrDiet* 2011;24(2):154-76.
50
51
- 52 15. Odimet, Organizador dietético Metabólico. *Hospital Clínico Universitario de Santiago*
53
54 *de Compostela, Spain* 2014
55
56
57
58
59
60

- 1
2
3
4
5
6
7
8
9
10
11
12
13
14
15
16
17
18
19
20
21
22
23
24
25
26
27
28
29
30
31
32
33
34
35
36
37
38
39
40
41
42
43
44
45
46
47
48
49
50
51
52
53
54
55
56
57
58
59
60
16. Manichanh C, Eck A, Varela E, et al. Anal gas evacuation and colonic microbiota in patients with flatulence: effect of diet. *Gut* 2014;63:401-08.
17. Malagelada C, Barba I, Accarino A, et al. Cognitive and hedonic responses to meal ingestion correlate with changes in circulating metabolites. *Neurogastroenterol Mot* 2016;28(12):1806-14.
18. Malagelada C, Accarino A, Molne L, et al. Digestive, cognitive and hedonic responses to a meal. *Neurogastroenterol Motil* 2015;27(3):389-96.
19. Serra J, Azpiroz F, Malagelada JR. Gastric distension and duodenal lipid infusion modulate intestinal gas transit and tolerance in humans. *Am J Gastroenterol* 2002;97:2225-30.
20. Serra J, Azpiroz F, Malagelada JR. Mechanisms of intestinal gas retention in humans: impaired propulsion versus obstructed evacuation. *Am J Physiol* 2001;281:G138-G43.
21. Serra J, Azpiroz F, Malagelada JR. Intestinal gas dynamics and tolerance in humans. *Gastroenterology* 1998;115:542-50.
22. Serra J, Azpiroz F, Malagelada JR. Impaired transit and tolerance of intestinal gas in the irritable bowel syndrome. *Gut* 2001;48:14-19.
23. Serra J, Salvioli B, Azpiroz F, et al. Lipid-induced intestinal gas retention in the irritable bowel syndrome. *Gastroenterology* 2002;123:700-06.
24. Hernando-Harder AC, Serra J, Azpiroz F, et al. Colonic responses to gas loads in subgroups of patients with abdominal bloating. *Am J Gastroenterol* 2010;105:876-82.

- 1
2
3
4
5
6 25. Emwas AH, Roy R, McKay RT, et al. Recommendations and Standardization of
7
8 Biomarker Quantification Using NMR-Based Metabolomics with Particular Focus on
9
10 Urinary Analysis. *J Proteome Res* 2016;15(2):360-73. doi:
11
12 10.1021/acs.jproteome.5b00885
13
14
15 26. Emwas AH, Luchinat C, Turano P, et al. Standardizing the experimental conditions for
16
17 using urine in NMR-based metabolomic studies with a particular focus on diagnostic
18
19 studies: a review. *Metabolomics* 2015;11(4):872-94. doi: 10.1007/s11306-014-0746-
20
21 7
22
23
24 27. Stanghellini V, Chan FK, Hasler WL, et al. Gastroduodenal Disorders.
25
26 *Gastroenterology* 2016;150(6):1380-92.
27
28
29 28. Lacy BE, Mearin F, Chang L, et al. Bowel Disorders. *Gastroenterology*
30
31 2016;150(6):1393-407. doi: 10.1053/j.gastro.2016.02.031
32
33
34 29. Wishart DS. Human Metabolome Database: completing the 'human parts list'.
35
36 *Pharmacogenomics* 2007;8(7):683-6. doi: 10.2217/14622416.8.7.683
37
38
39 30. Cloarec O, Dumas ME, Trygg J, et al. Evaluation of the orthogonal projection on latent
40
41 structure model limitations caused by chemical shift variability and improved
42
43 visualization of biomarker changes in 1H NMR spectroscopic metabolomic studies.
44
45 *Anal Chem* 2005;77(2):517-26. doi: 10.1021/ac048803i
46
47
48 31. Maeda K, Shiraishi S, Sakamoto N, et al. Identification of Escherichia coli by detection
49
50 of hydroquinone and uracil in the urine system. *J Chromatogr* 1985;345(1):11-8.
51
52
53 32. Bendezu RA, Mego M, Monclus E, et al. Colonic content: effect of diet, meals, and
54
55 defecation. *Neurogastroenterol Motil* 2016;Feb 12. doi: 10.1111/nmo.12930. [Epub
56
57
58
59
60

- 1
2
3
4
5 ahead of print]. PMID: 27545449
6
7
8 33. Murray K, Wilkinson-Smith V, Hoad C, et al. Differential effects of FODMAPs
9
10 (fermentable oligo-, di-, mono-saccharides and polyols) on small and large intestinal
11
12 contents in healthy subjects shown by MRI. *Am J Gastroenterol* 2014;109(1):110-
13
14 19.
15
16
17 34. Major G, Pritchard S, Murray K, et al. Colon hypersensitivity to distension, rather than
18
19 excessive gas production, produces carbohydrate-related symptoms in individuals
20
21 with irritable bowel syndrome. *Gastroenterology* 2017;152(1):124-33.
22
23
24 35. Boeckxstaens G, Camilleri M, Sifrim D, et al. Fundamentals of Neurogastroenterology:
25
26 Physiology/Motility - Sensation. *Gastroenterology* 2016;150:1292-304.
27
28
29 36. Devkota S, Wang Y, Musch MW, et al. Dietary-fat-induced taurocholic acid promotes
30
31 pathobiont expansion and colitis in *Il10^{-/-}* mice. *Nature* 2012;487(7405):104-8. doi:
32
33 10.1038/nature11225
34
35
36 37. Mego M, Accarino A, Malagelada JR, et al. Accumulative effect of food residues on
37
38 intestinal gas production. *Neurogastroenterol Motil* 2015;27(11):1621-28.
39
40
41 38. McIntosh K, Reed DE, Schneider T, et al. FODMAPs alter symptoms and the
42
43 metabolome of patients with IBS: a randomised controlled trial. *Gut*
44
45 2017;66(7):1241-51. doi: 10.1136/gutjnl-2015-311339
46
47
48 39. de Preter V, Vanhoutte T, Huys G, et al. Baseline microbiota activity and initial
49
50 bifidobacteria counts influence responses to prebiotic dosing in healthy subjects.
51
52 *Aliment Pharmacol Ther* 2008;27(6):504-13. doi: 10.1111/j.1365-2036.2007.03588.x
53
54
55
56
57
58
59
60

FIGURE LEGENDS

Figure 1. Experimental design. Note the color code: pre-treatment phase white, treatment black and post-treatment grey.

Figure 2. Flow chart.

Figure 3. Baseline symptoms measured by daily questionnaires pre-treatment (days 2-4, white), in the treatment phase (days 30-32, black) and in the post-treatment phase (day 47-49, grey) (LFD n=21; prebiotic group n=19). Data are average over each 3-day periods.

Figure 4. Number of daytime anal gas evacuations during the last 2 days of each evaluation phase: pre-treatment (**Pre**: days 3-4, white), treatment (**Tx**: days 31-32, black) and post-treatment (**Post**: days 48-49, grey) (LFD n=21; prebiotic group n=19).

Figure 5. Effect of challenge diet on symptoms measured by daily questionnaires pre-treatment (days 5-7, white) and in the treatment phase (days 33-35, black) (LFD n=21; prebiotic group n=19). Data are average over each 3-day periods. In each group the change during treatment from pre-treatment phase is shown.

1
2
3
4
5
6
7
8 Figure 6. Symptoms in response to probe meal in the pre-treatment (day 5, white) and
9
10 in the treatment phase (day 33, black) (LFD n=21; prebiotic group n=19).
11
12
13

14 Figure 7. Effect of treatment on relative abundance in *Bifidobacterium* and *Bilophila*
15 *wadsworthia*. Figure shows changes during treatment (from pre-treatment
16 phase) and after treatment (from treatment phase). Overall differences were
17 tested by non-parametric Kruskal-Wallis analysis of variance on ranks, and
18 the Mann-Whitney test was used for post-hoc comparisons (LFD n=21;
19 prebiotic group n=19). Data are median and interquartile range.
20
21
22
23
24
25
26
27
28
29
30
31
32
33
34
35
36
37
38
39
40
41
42
43
44
45
46
47
48
49
50
51
52
53
54
55
56
57
58
59
60

Table 1. Demographics and clinical data

	STUDY GROUPS		
	Prebiotic (n=24)	Low FODMAPs (n=21)	p value
- Age (range), years	43 (24-73)	48 (26-69)	0.309
- Sex, M/F	2/17	3/18	1
- Diagnosis, IBS-a/IBS-d/FAP	9/5/5	9/5/7	0.889
- Bowel habit, No./wk	6.1±0.8	5.9±0.7	0.679
- Stool form, Bristol score	4.9±1.0	4.8±1.0	0.797
- Symptom duration, years	4.7±1.8	4.4±1.5	0.694
- Flatulence, score*	5.2±3.0	5.3±2.3	0.976
- Abdominal bloating*	5.4±2.4	5.9±2.2	0.474
- Abdominal distension*	5.7±2.2	6.3±2.2	0.374
- Borborigmi*	3.1±2.3	3.8±2.5	0.348
- Discomfort/pain, score*	4.7±1.8	4.8±2.9	0.975

FAP, functional abdominal pain; * average of daily measurements over 3-day pre-treatment evaluation period

Table 2. Changes in bacterial taxa during and after intervention in the LFD group

Changes during treatment from pre-treatment phase		
TAXA	p^1	Trend
<i>Clostridiales; unknown genus; species 324</i>	<0.01	↓
<i>Lachnospiraceae; unknown genus; species 40</i>	<0.02	↑
<i>Ruminococcaceae; unknown genus; species 53</i>	<0.03	↑
<i>Bacteroidales; unknown genus; species 39</i>	<0.03	↑
<i>Ruminococcaceae; unknown genus; species 486</i>	<0.03	↑
<i>Bacteroides; species 293</i>	<0.03	↓
<i>Desulfovibrionaceae; unknown genus; species 508</i>	<0.05	↑
<i>Enterobacteriaceae; unknown genus ;species 217</i>	<0.05	↑
Changes post-treatment from treatment phase		
TAXA	p^1	Trend
<i>Streptococcus; species 72</i>	<0.01	↑
<i>Holdemania; species 509</i>	<0.01	↓
<i>Erysipelotrichaceae; genus unknown ;species 27</i>	<0.03	↑
<i>Clostridiales; genus unknown; species 122</i>	<0.03	↓
<i>Barnesiellaceae; genus unknown ;species 314</i>	<0.03	↓
<i>Clostridiales; genus unknown;species 292</i>	<0.03	↓
<i>Clostridiales; genus unknown; species 251</i>	<0.05	↓
<i>Lachnospiraceae; genus unknown;species 558</i>	<0.05	↓
<i>Enterobacteriaceae; genus unknown; species 449</i>	<0.05	↑
<i>Bifidobacterium genus</i>	<0.05	↑

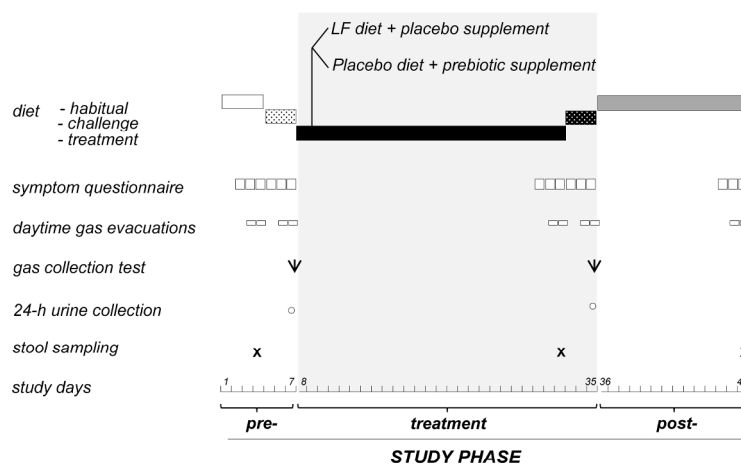
¹ Non-parametric repeated measures Friedman test.

Table 3. Changes in bacterial taxa during and after intervention in the prebiotic group

Changes during treatment from pre-treatment phase		
TAXA	p^1	Trend
<i>Parabacteroides distasonis</i>	<0.01	↓
<i>Clostridiaceae; genus unknown; species 319</i>	<0.02	↓
<i>Ruminococcaceae ;genus unknown; species 118</i>	<0.02	↑
<i>Lachnospiraceae; genus unknown; species 40</i>	<0.02	↑
<i>Oscillospira; species 52</i>	<0.02	↓
<i>Oscillospira; species 409</i>	<0.03	↓
<i>Lachnospiraceae ;genus unknown; species 783</i>	<0.03	↑
<i>Barnesiellaceae; genus unknown; species 542</i>	<0.05	↓
<i>Christensenellaceae ;genus unknown; species 497</i>	<0.05	↓
<i>Ruminococcus; species 584</i>	<0.05	↓
<i>Bilophila wadsworthia</i>	<0.05	↓
Changes post-treatment from treatment phase		
TAXA	p^1	Trend
<i>Lachnospiraceae; genus unknown; species 19</i>	<0.01	↓
<i>Bacteroides; species 119</i>	<0.02	↑
<i>Clostridiales; genus unknown; species 171</i>	<0.02	↓
<i>Peptococcaceae; genus unknown; species 373</i>	<0.03	↓
<i>Veillonellaceae; genus unknown; species 284</i>	<0.03	↑
<i>Lachnospiraceae; genus unknown; species 206</i>	<0.03	↑
<i>Bacteroides; species 124</i>	<0.05	↑
<i>Clostridiales; genus unknown; species 410</i>	<0.05	↓
<i>Ruminococcaceae; genus unknown; species 130</i>	<0.05	↑
<i>Ruminococcaceae; genus unknown; species 592</i>	<0.05	↑
<i>Alphaproteobacteria; genus unknown; species 223</i>	<0.05	↓

¹ Non-parametric repeated measures Friedman test.

Figure 1

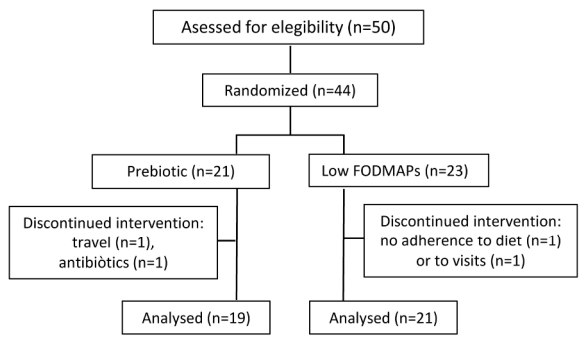


Experimental design. Note the color code: pre-treatment phase white, treatment black and post-treatment grey.

190x254mm (300 x 300 DPI)

1
2
3
4
5
6
7
8
9
10
11
12
13
14
15
16
17
18
19
20
21
22
23
24
25
26
27
28
29
30
31
32
33
34
35
36
37
38
39
40
41
42
43
44
45
46
47
48
49
50
51
52
53
54
55
56
57
58
59
60

Figure 2

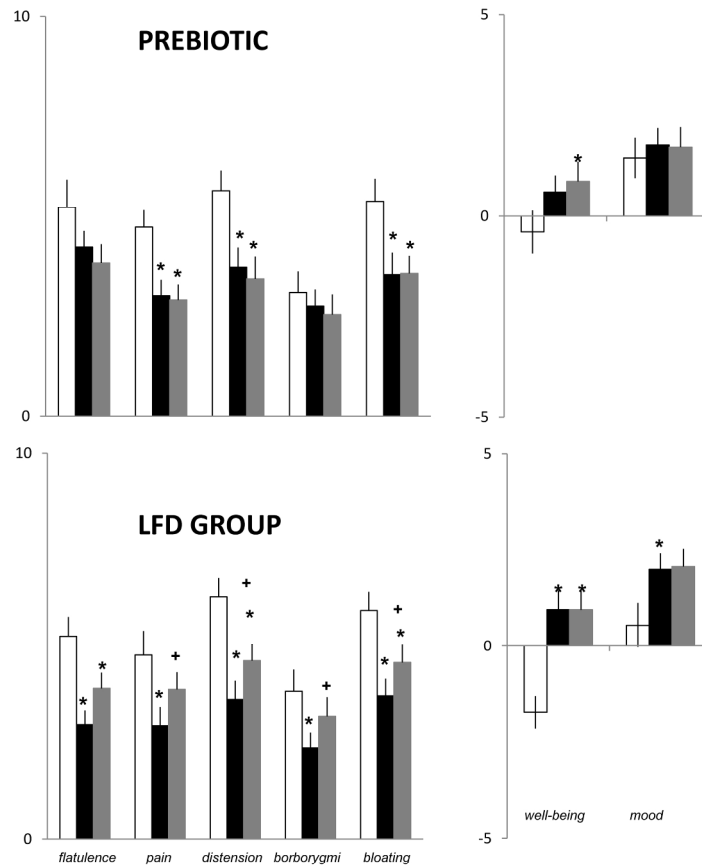


Flow chart

190x254mm (300 x 300 DPI)



Figure 3

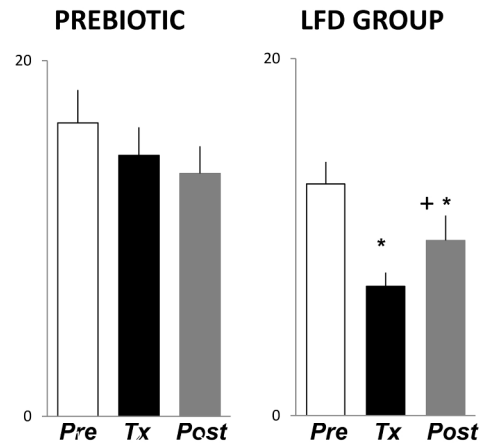


* $p < 0.05$ vs pre-treatment phase; + $p \leq 0.053$ vs treatment phase

Baseline symptoms measured by daily questionnaires pre-treatment (days 2-4, white), in the treatment phase (days 30-32, black) and in the post-treatment phase (day 47-49, grey) (LFD $n=21$; prebiotic group $n=19$). Data are average over each 3-day periods.

190x254mm (300 x 300 DPI)

Figure 4



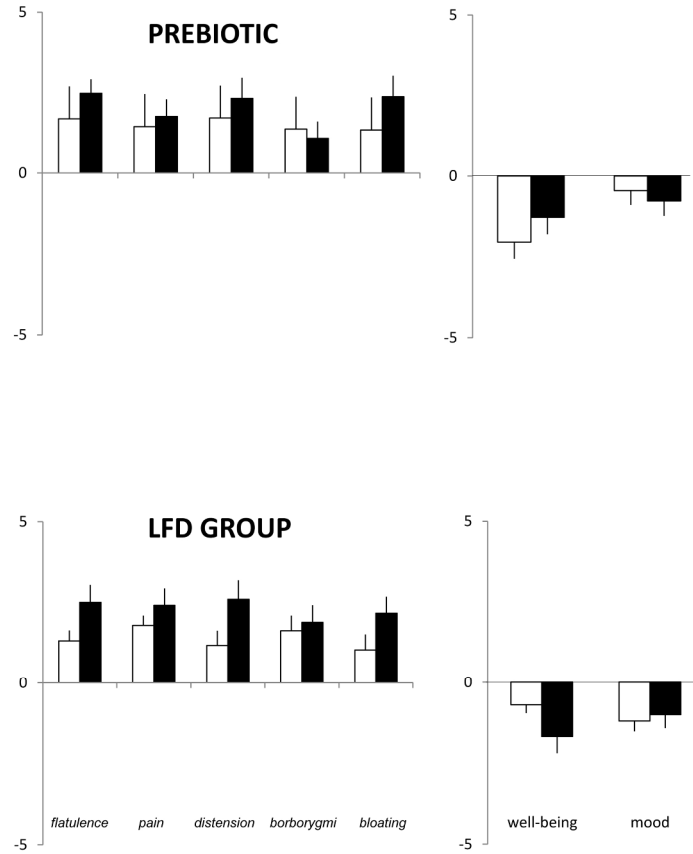
* $p < 0.05$ vs pre-treatment phase;

+ $p = 0.056$ vs treatment

Number of daytime anal gas evacuations during the last 2 days of each evaluation phase: pre-treatment (Pre: days 3-4, white), treatment (Tx: days 31-32, black) and post-treatment (Post: days 48-49, grey) (LFD $n = 21$; prebiotic group $n = 19$).

190x254mm (300 x 300 DPI)

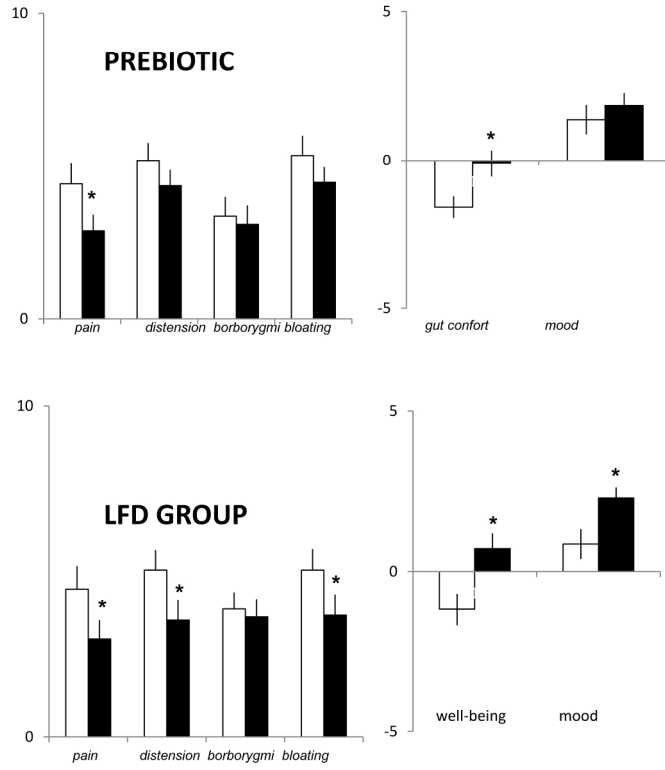
Figure 5



Effect of challenge diet on symptoms measured by daily questionnaires pre-treatment (days 5-7, white) and in the treatment phase (days 33-35, black) (LFD n=21; prebiotic group n=19). Data are average over each 3-day periods. In each group the change during treatment from pre-treatment phase is shown.

190x254mm (300 x 300 DPI)

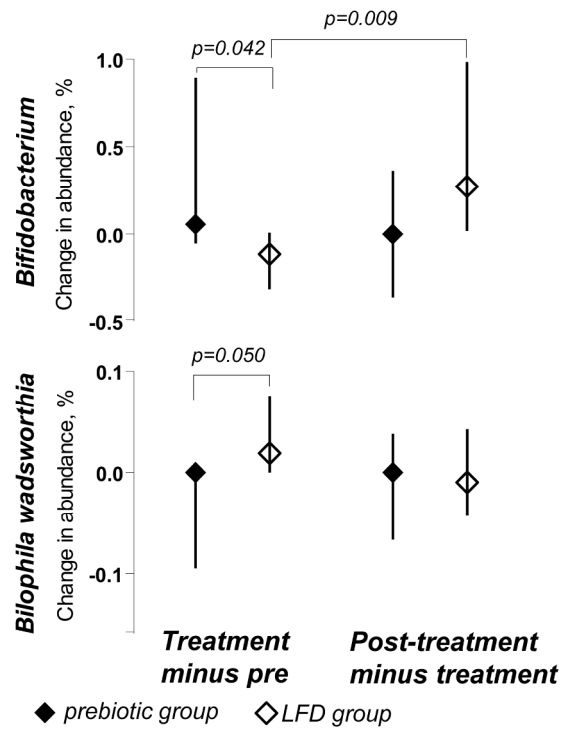
Figure 6



Symptoms in response to probe meal in the pre-treatment (day 5, white) and in the treatment phase (day 33, black) (LFD n=21; prebiotic group n=19).

190x254mm (300 x 300 DPI)

Figure 7



Effect of treatment on relative abundance in Bifidobacterium and Bilophila wadsworthia. Figure shows changes during treatment (from pre-treatment phase) and after treatment (from treatment phase). Overall differences were tested by non-parametric Kruskal-Wallis analysis of variance on ranks, and the Mann-Whitney test was used for post-hoc comparisons (LFD n=21; prebiotic group n=19). Data are median and interquartile range.

190x254mm (300 x 300 DPI)

Supplemental material: microbiota analysis

Genomic DNA extraction. A frozen aliquot (250 mg) of each sample was suspended in 250 μ L of guanidine thiocyanate, 0.1 M Tris (pH 7.5), 40 μ L of 10% N-lauroyl sarcosine and 500 μ L of 5% N-lauroyl sarcosine. DNA was extracted by mechanical disruption of microbial cells with beads, and the recovery of nucleic acids from the clear lysates was achieved by alcohol precipitation, as previously described ¹. An equivalent of 1 mg of each sample was used for DNA quantification using a NanoDrop ND-1000 spectrophotometer (Nucliber, Madrid, Spain).

High-throughput DNA sequencing. To profile the microbiome composition, the hyper-variable region (V4) of the bacterial and archaeal 16S rRNA gene was amplified by PCR. On the basis of our analysis performed using PrimerProspector software ², the V4 primer pairs used in this study were expected to amplify almost 100% of the bacterial and archaeal domains. The 5' ends of the forward (V4F_515_19: 5'- GTGCCAGCAMGCCGCGGTAA -3') and reverse (V4R_806_20: 5'- GGACTACCAGGGTATCTAAT -3') primers targeting the 16S gene were tagged with specific sequences as follows: 5'- {AATGATACGGCGACCACCGAGATCTACACTATGGTAATTGT} {GTGCCAGCMGCCGCGGTAA}-3' and 5'- {CAAGCAGAAGACGGCATAACGAGAT} {Golay barcode} {AGTCAGTCAGCC} {GGACTACHVGGGTWTCTAAT}-3'. Multiplex identifiers, known as Golay codes, had 12 bases and were specified downstream of the reverse primer sequence (V4R_806_20) ³. Standard PCR (0.75 units of Taq polymerase (Roche, Barcelona, Spain) and 20 pmol/ μ L forward and reverse primers) was run in a Mastercycler gradient (Eppendorf, Madrid, Spain) at 94°C for 3 min,

1
2 followed by 35 cycles at 94°C for 45 sec, 56°C for 60 sec, 72°C for 90 sec, and
3
4 a final cycle of 72°C for 10 min. Amplicons were purified using a QIAquick PCR
5
6 Purification Kit (Qiagen, Barcelona, Spain), quantified using a NanoDrop ND-
7
8 1000 spectrophotometer (Nucliber, Madrid, Spain), and then pooled in equal
9
10 concentrations. Pooled amplicons (2 nM) were then subjected to sequencing
11
12 using Illumina MiSeq technology in the technical support unit of the
13
14 Autonomous University of Barcelona (UAB, Spain) following standard Illumina
15
16 platform protocols.
17
18

19
20 *Sequence analysis.* Sequences obtained from the 60 faecal samples
21
22 after the sequencing step were analysed with QIIME (Quantitative Insights into
23
24 Microbial Ecology)

25
26 1.9.1 ⁴ using an in-house script that performs upstream and downstream
27
28 analyses. Low-quality raw sequences with a Phred score of less than 20 were
29
30 removed from the analysis. Each read was assigned back to its corresponding
31
32 sample during a demultiplexing step, and the barcodes were removed from the
33
34 sequences. After filtering, we obtained a total of 2,460,589 high-quality
35
36 sequences. The USEARCH (ultra-fast sequence analysis) ⁵ tool was used to
37
38 cluster similar sequences into operational taxonomic units (OTUs) or taxa
39
40 based on a 97% similarity level, and the UCHIME (ultra-fast chimeric search)
41
42 algorithm was used to remove chimeric sequences. From each of the OTUs,
43
44 one representative sequence was selected and then aligned using PyNAST
45
46 (Python Nearest Alignment Space Termination tool) against a Greengenes
47
48 template alignment from the most recent version of the database (gg_13_8).
49
50 Then, a taxonomical assignment step was performed using the basic local
51
52 alignment search tool (BLAST) to map each representative sequence against a
53
54
55
56
57
58
59
60

1
2
3 combined database encompassing the Greengenes and PATRIC
4 (Pathosystems Resource Integration Center) databases. A phylogenetic tree
5 was constructed using the FastTree programme and an OTU table. To avoid
6 false positive OTUs, we eliminated those that did not represent at least 0.2% of
7 the sequences in at least two samples. The final OTU table was rarefied at
8 15396 sequence reads per sample. Rarefaction is used to overcome cases in
9 which read counts were not similar between samples.
10
11
12
13
14
15
16

17 *Quantification of Bifidobacterium.* To quantify *Bifidobacterium* spp., the
18 extracted genomic DNA was used to amplify the 16S rRNA gene by quantitative
19 real-time PCR (qPCR) using the following specific primers: Bifgenus_F (5'-TGG
20 CTC AGG ATG AAC GCT G-3'), Bifgenus_R (5'-TGA TAG GAC GCG ACC
21 CCA T-3') and the TaqMan MGB probe (FAMTM dye-labelled; 5'-CAT CCG GCA
22 TTA CCA-3'). To calibrate the qPCR reactions, we used calculated amounts of
23 extracted DNA from three isolated *Bifidobacterium* species (*B. breve*, *B. longum*
24 and *B. infantis*). Serial dilutions of the pooled DNA were amplified (copy number
25 ranging from 25 to 2.5×10^6) to extrapolate the bifidobacterial number in each
26 sample. The qPCR was performed with the 7500 Fast Real-Time PCR system
27 (Applied Biosystems, Barcelona, Spain) using optical-grade 96-well plates. The
28 PCR reaction was performed in a total volume of 25 μ L using the TaqMan
29 Universal PCR Master Mix (Applied Biosystems), containing 300 nM of each
30 primer and 100 nM of the MGB probe. The reaction conditions for the
31 amplification of DNA were 50°C for 2 min, 95°C for 10 min, 40 cycles of 95°C for
32 15 sec and 60°C for 1 min. All reactions were performed in triplicate, and the
33 mean values were calculated. The data were analysed using Sequence
34 Detection Software version 1.4, supplied by Applied Biosystems.
35
36
37
38
39
40
41
42
43
44
45
46
47
48
49
50
51
52
53
54
55
56
57
58
59
60

References

1. Cardona S, Eck A, Cassellas M, et al. Storage conditions of intestinal microbiota matter in metagenomic analysis. *BMC Microbiol* 2012;12:158.
2. Walters WA, Caporaso JG, Lauber CL. Primer-Prospector: de novo design and taxonomic analysis of barcoded polymerase chain reaction primers. *Bioinformatics* 2011;27:1159-61.
3. Caporaso JG, Lauber CL, Walters WA, et al. Ultra-high-throughput microbial community analysis on the Illumina HiSeq and MiSeq platforms. *ISMEJ* 2012;6(8):1621-24.
4. Navas-Molina JA, Peralta-Sanchez JM, Gonzalez A, et al. Advancing our understanding of the human microbiome using QIIME. *Methods Enzymol* 2013;531:371-444.
5. Edgar RC. Search and clustering orders of magnitude faster than BLAST. *Bioinformatics* 2010;26(19):2460-61.