

Thermoelectric properties of minerals with the mawsonite structure

Article

Accepted Version

Siloi, I., Gopal, P., Curtarolo, S., Nardelli, M. B., Vaqueiro, P. ORCID: <https://orcid.org/0000-0001-7545-6262> and Fornari, M. (2019) Thermoelectric properties of minerals with the mawsonite structure. ACS Applied Energy Materials, 2019 (2). pp. 8068-8078. ISSN 2574-0962 doi: <https://doi.org/10.1021/acsaem.9b01564> Available at <https://centaur.reading.ac.uk/87111/>

It is advisable to refer to the publisher's version if you intend to cite from the work. See [Guidance on citing](#).

To link to this article DOI: <http://dx.doi.org/10.1021/acsaem.9b01564>

Publisher: ACS Publications

All outputs in CentAUR are protected by Intellectual Property Rights law, including copyright law. Copyright and IPR is retained by the creators or other copyright holders. Terms and conditions for use of this material are defined in the [End User Agreement](#).

www.reading.ac.uk/centaur

CentAUR

Central Archive at the University of Reading

Reading's research outputs online

Thermoelectric Properties of Minerals with the Mawsonite Structure

Ilaria Siloi, Priya Gopal, Stefano Curtarolo, Marco Buongiorno Nardelli, Paz Vaquero, and Marco Fornari

ACS Appl. Energy Mater., **Just Accepted Manuscript** • DOI: 10.1021/acsaem.9b01564 • Publication Date (Web): 31 Oct 2019Downloaded from pubs.acs.org on November 1, 2019**Just Accepted**

“Just Accepted” manuscripts have been peer-reviewed and accepted for publication. They are posted online prior to technical editing, formatting for publication and author proofing. The American Chemical Society provides “Just Accepted” as a service to the research community to expedite the dissemination of scientific material as soon as possible after acceptance. “Just Accepted” manuscripts appear in full in PDF format accompanied by an HTML abstract. “Just Accepted” manuscripts have been fully peer reviewed, but should not be considered the official version of record. They are citable by the Digital Object Identifier (DOI®). “Just Accepted” is an optional service offered to authors. Therefore, the “Just Accepted” Web site may not include all articles that will be published in the journal. After a manuscript is technically edited and formatted, it will be removed from the “Just Accepted” Web site and published as an ASAP article. Note that technical editing may introduce minor changes to the manuscript text and/or graphics which could affect content, and all legal disclaimers and ethical guidelines that apply to the journal pertain. ACS cannot be held responsible for errors or consequences arising from the use of information contained in these “Just Accepted” manuscripts.

Thermoelectric Properties of Minerals with the Mawsonite Structure

Ilaria Siloi,^{*,†,||} Priya Gopal,[†] Stefano Curtarolo,^{‡,⊥} Marco Buongiorno Nardelli,^{†,⊥} Paz Vaquero,[¶] and Marco Fornari^{*,§,⊥}

Department of Physics, University of North Texas, Denton, TX 76203, USA, Department of Mechanical Engineering and Materials Science, Duke University, Durham, NC 27708, USA, Department of Chemistry, University of Reading, Whiteknights, Reading, RG6 6AD, UK, and Department of Physics and Science of Advanced Materials Program, Central Michigan University, Mt. Pleasant, MI 48858, USA

E-mail: siloi@usc.edu; marco.fornari@cmich.edu

Abstract

Synthetic copper sulfides have emerged as promising non-toxic and low-cost materials for thermoelectric power generation in low-grade waste heat recovery systems. Similarly to tetrahedrite and colusite, mawsonite $\text{Cu}_6\text{Fe}_2\text{SnS}_8$ exhibits a modified corner sharing Cu-S tetrahedral network which usually leads to p-type character and low thermal conductivity. In order to explore the applicative potential of mawsonite, we studied

^{*}To whom correspondence should be addressed

[†]Department of Physics, University of North Texas, Denton, TX 76203, USA

[‡]Department of Mechanical Engineering and Materials Science, Duke University, Durham, NC 27708, USA

[¶]Department of Chemistry, University of Reading, Whiteknights, Reading, RG6 6AD, UK

[§]Department of Physics and Science of Advanced Materials Program, Central Michigan University, Mt. Pleasant, MI 48858, USA

^{||}Present address: Department of Physics and Astronomy, University of Southern California, Los Angeles, CA 90089, USA

[⊥]Center for Autonomous Materials Design, Duke University, Durham, NC 27708, USA

1
2
3 the band structure, the phonon dispersions, the electronic and transport coefficients as
4 well as the effect of isovalent substitutions of Fe, Sn and S. The combined analysis of
5 electronic and vibrational properties highlights the role of the weakly bonded copper
6 component in achieving a very low thermal conductivity. We also demonstrate that
7 the Cu-S bond builds a 2D conductive network where the contribution from other ele-
8 ments is negligible. Magnetic calculations point to an anti-ferromagnetic ground state
9 substantially affected by the covalency of the bonds with the conductive plane. The
10 chemical substitution of Fe with Ni leads to non-magnetic metals whereas $\text{Cu}_6\text{Fe}_2\text{SnSe}_8$,
11 $\text{Cu}_6\text{Fe}_2\text{PbS}_8$, and $\text{Cu}_6\text{Fe}_2\text{GeX}_8$ with X=S, Se, and Te are semiconductors.
12
13
14
15
16
17
18
19
20
21

22 Introduction

23
24
25
26 Thermoelectric (TE) devices provide waste-heat recovery solutions that are robust, envi-
27 ronmentally friendly, and maintenance-free. Available estimates^{1,2} indicate that thermal
28 losses exceed 50% of the total energy production of the United States, underlining that even
29 marginally efficient conversion may have an enormous impact on the economies of industrial-
30 ized countries. Although there have been significant advances in TE performance for power
31 generation at high temperatures, there is a dearth of low-cost and sustainable materials for
32 the recovery of industrial low-grade waste heat ($T \leq 600$ K) which according to recent es-
33 timates represents about 60% of industrial emissions.³ To the best of our knowledge, the
34 most promising materials in this temperature window are β -ZnSb₃⁴ ($ZT = 1.3$ @ 670 K),
35 AgPb₁₈SbTe₂₀⁵ ($ZT = 2.2$ @ 800 K), Mg₂Si_{1-x}Sn_x⁶ ($ZT = 1.3$ @ 700 K), Na_{1-x}Pb_mSbTe_{m+2}⁷
36 ($ZT = 1.7$ @ 650 K), PbTeSrTe⁸ ($ZT = 2.5$ @ 923 K), PbTe–AgTeLa⁹ ($ZT = 1.6$ @ 775 K).
37
38
39
40
41
42
43
44
45
46

47 Traditional TE devices are engineered using doped p- and n- legs to form a thermocouple
48 in which heat current flows in parallel whereas charge flows in series. Ideally, in each leg, the
49 only carriers available are holes or electrons: the combination of low thermal conductivity
50 (κ) and large power factor ($S^2\sigma$, where S is the Seebeck coefficient and σ is the electrical
51 conductivity) is essential for the generation of large voltage when a temperature gradient is
52
53
54
55
56
57
58
59
60

1
2
3 applied through the device. The energy conversion efficiency of a TE material is expressed
4 in terms of the figure of merit $ZT = S^2\sigma T/\kappa$ - where T is the temperature at which the
5 device operates.
6
7

8
9 Increasing the efficiency of the thermoelectric energy conversion is a difficult task which
10 requires the optimization of intertwined electrical and thermal degrees of freedom. The
11 main strategies used to target improved TE performance have been based on the joint effort
12 of synthesis, characterization, and theoretical/computational studies. This is the case of
13 the band-engineering, a procedure that relies on the accurate knowledge of the electronic
14 structure to increase the effective masses and the number of carriers pockets at the Fermi
15 energy with the goal to optimize the power factor.¹⁰⁻¹² More recently, the manipulation of
16 structural and bonding features that affect the electron relaxation time has also been suc-
17 cessful.¹³ The optimization of lattice thermal conductivity, κ_{lat} , can be controlled by tuning
18 the anharmonicity of the bonds^{14,15} or by introducing additional scattering channels for the
19 heat carrier vibrations. This design criterion to reduce lattice thermal conductivity has been
20 pursued by disrupting the crystalline order through the inclusion of heavy elements in the
21 crystal structure (e.g. AgPbSbTe₂,⁵ Bi₂Te₃,¹⁶ BaLaYbCoSb₁₂,¹⁷) or through nanostructur-
22 ing.¹⁸ Unfortunately, most of the new materials turned out to include rare, expensive, or/and
23 toxic chemical elements making them less ideal for technological deployment.
24
25
26
27
28
29
30
31
32
33
34
35
36
37
38

39 In the last decade, the need to conciliate performance with environmental and cost con-
40 straints has triggered research toward synthetic sulfide minerals, which often contain non-
41 toxic and Earth-abundant elements. Despite the sulfur's light atomic weight and the strong
42 ionic character, which are usually detrimental to the TE effects, sulfides emerged as good
43 candidates for p-type TE conversion. This is the case of the superionic phase of chalcocite¹⁹
44 Cu_{2-x}S ($0.5 < ZT < 1.7$), where disordered Cu ions contribute to extremely low ther-
45 mal conductivity while keeping electrical properties similar to normal semiconductors. The
46 strong migration of Cu ions can be mitigated by adding other metallic species into the com-
47 position extending the exploration to ternary/quaternary compounds, like tetrahedrite^{20,21}
48
49
50
51
52
53
54
55
56
57
58
59
60

1
2
3 $\text{Cu}_{12-x}\text{M}_x\text{Sb}_4\text{S}_{13}$ with $\text{M} = \text{Mn}, \text{Fe}, \text{Co}, \text{Ni}, \text{Zn}$, colusite^{22,23} $\text{Cu}_{26}\text{V}_2\text{Sn}_6\text{S}_{32}$, bornite²⁴ Cu_5FeS_4 ,
4
5 stannoidite²⁵ $\text{Cu}_8\text{Fe}_3\text{Sn}_2\text{S}_{12}$ and germanite²⁶ $\text{Cu}_{26}\text{Fe}_4\text{Ge}_4\text{S}_{32}$, to mention a few. In particu-
6
7 lar tetrahedrite and chalcocite are among the most widespread ores on Earth. The largest
8
9 values for ZT in sulfide minerals were reported near 0.5 at 500K for pristine compositions
10
11 without specific optimization (see for instance Ref. Pavan Kumar et al.¹³, Fig. 10) making
12
13 this family of materials of great interest for low grade waste-heat recovery.
14
15
16

17
18 In this manuscript we present a first-principles theoretical study of the bulk properties of
19
20 mawsonite $\text{Cu}_6\text{Fe}_2\text{SnS}_8$, a sulfide mineral found in hydrothermal copper ores within volcanic
21
22 rocks. Our results are discussed in light of a recently published experimental study,²⁷ that
23
24 shows very low value for lattice thermal conductivity, below $1 \text{ W m}^{-1} \text{ K}^{-1}$ in the range of
25
26 temperature $300 < T < 650 \text{ K}$, and the figure of merit $ZT = 0.43$ at $T = 623 \text{ K}$ for the un-
27
28 doped structure. Besides providing some considerations on the crystal structure presented
29
30 in Zhang et al.²⁷, we analyse the band structure and the vibrational dispersion to rationalize
31
32 the electronic transport properties and the magnetic properties. In particular, we identify the
33
34 special role of the weakly bonded Cu component in lowering the frequency of optic modes.
35
36 We will show that the vibrational properties in weakly bonded subsystems display marked
37
38 similarities to the ones observed in liquids or amorphous solids. In this conceptual framework,
39
40 the low thermal conductivity strictly depends on the coexistence of weakly bonded quasi-
41
42 liquid subsystems, CuS_4 , within a crystalline matrix. The anti-ferromagnetism induced by
43
44 Fe as well as the consequence of the covalency of the Cu-S bonds is also discussed. We also
45
46 assess the effect of chemical tuning in mawsonite by replacing Fe with Ni, S with Se and Te,
47
48 and Sn with Ge, and Pb.
49
50
51
52
53
54
55
56
57
58
59
60

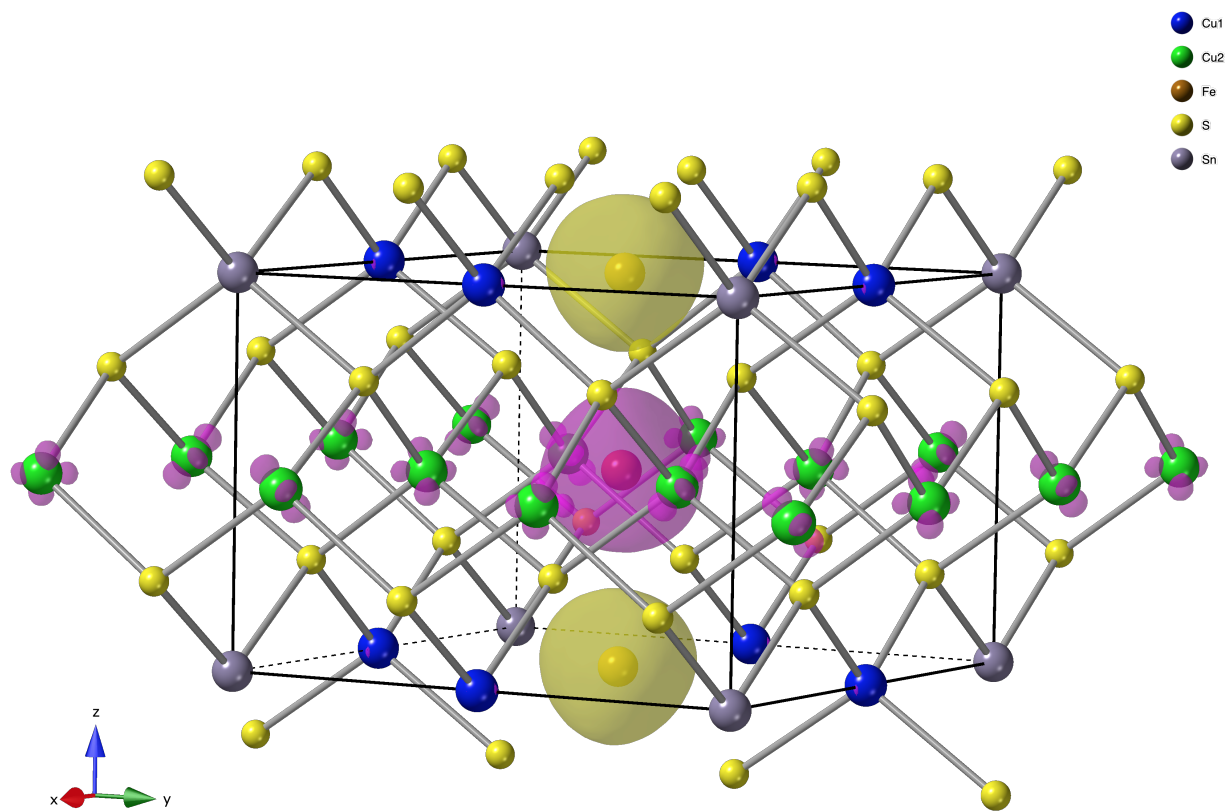


Figure 1: Unit cell of mawsonite $\text{Cu}_6\text{Fe}_2\text{SnS}_8$ (space group $N^\circ 115$) with S(4j) and S(4k) (yellow) corner-sharing tetrahedral network centered around Cu(4i) (green) and Cu(2g) (blue), Fe(1b) and Fe(1c) (red) and Sn(1a) (gray) ions. Isosurface of the spin polarization positive (yellow)/negative (magenta) indicates the AFM ordering as well as a presence of an induced spin polarization on the plan shared by Fe and Cu (4i).

Computational methods

All calculations in this work are based on spin-polarized density functional theory (DFT) as implemented in Quantum Espresso^{28,29} integrated in the high-throughput infrastructure of AFLOW π +PAOFLOW,^{30,31} which allows for an automated and simplified calculation of vibrational spectra, elastic properties, dielectric functions, and transport coefficients among the others. With respect to traditional approaches for computing solids properties based on plane-wave basis set, PAOFLOW provides an effective and accurate representation of the *ab initio* electronic structure in terms of localized basis set. Once the *ab initio* electronic structure is solved on a well converged plane-wave basis set, it is mapped into a tight binding (TB) model that precisely reproduces a selected number of bands of interest. The Hamiltonian for a specific material, is computed in real space using pseudo atomic orbitals from the pseudopotential of any given element as basis set. With this method one can first build and then operate with the real space *ab initio* TB Hamiltonian that accurately reproduces the DFT band structure. This procedure is convenient especially when the use of a very dense k-point grid is preferable, as it happens in the computation of transport properties. Further, the TB representation allows the efficient computation of two-electron integrals for the development of a local exchange functional. The ACBN0 functional approach provides a direct and self-consistent evaluation of the on-site Coulomb U and exchange J -parameters at a low computational cost.³² Better accuracy for lattice parameters, energy band gap and phonon dispersions are obtained.³³ Initially, norm-conserving (NC) PBE pseudopotentials³⁴ (energy cut off of 250 Ry and $6 \times 6 \times 8$ grid) are used to determine the effective Hubbard corrections. Even though our implementation of ACBN0 uses norm-conserving pseudo-potentials, the transferability of the U -values has been tested on different pseudo-potentials.³⁵ The phonons calculations use ultrasoft pseudopotentials (energy-cut off of 45 Ry and $6 \times 6 \times 8$ grid) with the PBEsol exchange-correlation functional³⁶ and Hubbard U corrections reported in the caption of Figure 3.

Transport properties - Seebeck coefficient S , electrical conductivity σ and electronic contribution to thermal conductivity κ_{el} - are computed by solving Boltzmann transport equation within the constant relaxation time and the rigid band approximation as implemented in PAOFLOW.³⁷ In agreement with similar compound, colusite²³, we set to 10^{-15} s when estimating the resistivity. A very dense interpolated k-mesh of $18 \times 18 \times 24$ grid is used for accurate calculations. When discussing the electronic structure, we report transport properties across a large range of temperature whereas the chemical potential is considered constant throughout the temperature range. PAOFLOW provides the generalized transport tensors by independent calculations for spin-majority (\uparrow) and spin-minority (\downarrow).

$$\mathcal{L}_\alpha^s = \frac{1}{4\pi^3} \int \tau \sum_n \mathbf{v}_n^s(\mathbf{k}) \otimes \mathbf{v}_n^s(\mathbf{k}) \frac{\partial f_0}{\partial \epsilon^s} [\epsilon_n^s - \mu] d\mathbf{k}, \quad (1)$$

with $\alpha = 0, 1, 2$, $s = \uparrow, \downarrow$ is the spin index, τ is the constant scattering time, $\mathbf{v}_n(\mathbf{k})$ is the electron velocity for the n -th band on each k -point, f_0 is the equilibrium distribution function and ϵ is the electron energy in each spin configuration s . Taking into account the spin polarization, the relevant transport quantities can be defined according to the two-current model³⁸ in which the spin-flip scattering is neglected:

$$\sigma = e^2(\mathcal{L}_0^\uparrow + \mathcal{L}_0^\downarrow), \quad (2)$$

$$S = -\frac{1}{Te}([\mathcal{L}_0^\uparrow]^{-1} \cdot \mathcal{L}_1^\uparrow + [\mathcal{L}_0^\downarrow]^{-1} \cdot \mathcal{L}_1^\downarrow), \quad (3)$$

$$\kappa_{el} = \frac{1}{T}[(\mathcal{L}_2^\uparrow + \mathcal{L}_2^\downarrow) - (\mathcal{L}_1^\uparrow \cdot [\mathcal{L}_0^\uparrow]^{-1} \cdot \mathcal{L}_1^\uparrow + \mathcal{L}_1^\downarrow \cdot [\mathcal{L}_0^\downarrow]^{-1} \cdot \mathcal{L}_1^\downarrow)]. \quad (4)$$

$$\mathcal{L}_1^\downarrow \cdot [\mathcal{L}_0^\downarrow]^{-1} \cdot \mathcal{L}_1^\downarrow]. \quad (5)$$

Vibrational properties have been obtained using the finite-displacement method as implemented in Quantum ESPRESSO with a supercell of $2 \times 2 \times 2$, whose volume has been relaxed first. Between each ionic step of the geometry optimization the force convergence tolerance is set to 10^{-3} Ry/Bohr, while the energy tolerance is 10^{-4} Ry to ensure accuracy. In the self-

consistent electronic calculation instead the energy threshold is set to 10^{-10} Ry. The phonon dispersion provides a starting point for the computation of the lattice thermal conductivity, as expressed in the Debye-Callaway model.^{39,40} Even though the integrated Grüneisen parameter is not directly correlated to thermal conductivity,⁴¹ the frequency distribution of the Grüneisen parameter resolved by modes seems to be a good qualitative descriptor for the lattice thermal conductivity.^{15,42,43} Within the quasiharmonic approximation we compute the mode resolved Grüneisen parameter γ_{qj} for the wave vector q and the phonon branch j by taking the derivative of the dynamical matrix with respect to the volume:

$$\gamma_{qj} = \frac{V_{eq}}{2\omega_{qj}} \sum_j e_{qj} \frac{\partial D_q}{\partial V} e_{qj}^*, \quad (6)$$

where D_q is the dynamical matrix for a wave-vector q , ω_{qj} is the vibrational frequency, and e_{qj} is the eigenvector for phonon branch j . We also compute the contribution of each atomic species. In our calculations the cell volume varies by 1% with respect to the relaxed volume. Finally, magnetic ordering has been studied with spin-polarized formalism by setting a starting magnetization to break the symmetry and to provide a starting point for self-consistency. Both ferromagnetic and antiferromagnetic orders have been explored.

Crystal Structure

Mawsonite $\text{Cu}_6\text{Fe}_2\text{SnS}_8$ is a typical copper-iron sulfide with a complex unit cell composed of 17 atoms (space group $P\bar{4}m2$, N° 115). Similarly to colusite, chalcopyrite and kesterite, mawsonite crystallizes in a tetragonal structure derived from the zinc-blende: corner sharing SnS_4 and CuS_4 distorted tetrahedrons, centered around the cations Sn ($1a$) and Cu ($2g$ and $4i$), are stacking along the same axis, whereas regular FeS_4 ($1b$ and $1c$) tetrahedrons share edges. In Figure 1 the green Cu($4i$) atoms highlight a layered sublattice that builds a continuous network. We report in Table 1 the optimized lattice and structural parameters for the pseudopotentials used (and experimental data for comparison). The theoretical volumes

obtained with a variable cell calculation are within 6% of the experimental values.

Table 1: Structural parameters determined theoretically for the mawsonite structure. Experimental data from Szymanski⁴⁴ are in excellent agreement with the calculations. Lattice parameters were determined using PBEsol pseudopotentials, $a=7.476 \text{ \AA}$ and $c=5.178 \text{ \AA}$, and PBE pseudopotentials $a=7.556 \text{ \AA}$ and $c=5.356 \text{ \AA}$. The experimental values given by the American Mineralogist Crystal Structure Database⁴⁵ are $a=7.603 \text{ \AA}$ and $c=5.358 \text{ \AA}$.

	x	y	z
Sn(1a)	0.0000	0.0000	0.0000
Cu(2g)	0.5000	0.0000	0.0001
Cu(4i)	0.2471	0.2471	0.5000
Fe(1b)	0.5000	0.5000	0.0000
Fe(1c)	0.5000	0.5000	0.5000
S(4j)	0.2625	0.0000	0.2533
S(4k)	0.2565	0.5000	0.2487

Although Zhang *et al.* have reported the synthesis and thermoelectric properties of mawsonite,²⁷ careful examination of the powder X-ray diffraction data presented by these authors highlights major discrepancies between their experimental and calculated diffraction patterns, see Figure 2. According to Szymanski,⁴⁴ mawsonite crystallises in a superstructure of sphalerite, and previously reported powder diffraction patterns of mawsonite show characteristic superstructure peaks at 2θ values of 16.5° (110), 20.3° (101), 23.4° (200) and 31.1° (211) (Cu $K\alpha$ radiation),⁴⁶ which are in excellent agreement with the calculated pattern using the reported crystal structure.⁴⁴ These characteristic superstructure peaks are absent in the experimental powder diffraction pattern reported by Zhang *et al.*,²⁷ which instead contains markedly different superstructure peaks, presumably corresponding to another superstructure of sphalerite. More recently, these authors have identified the material prepared by them as a mixture of phases, rather than pure mawsonite.⁴⁷

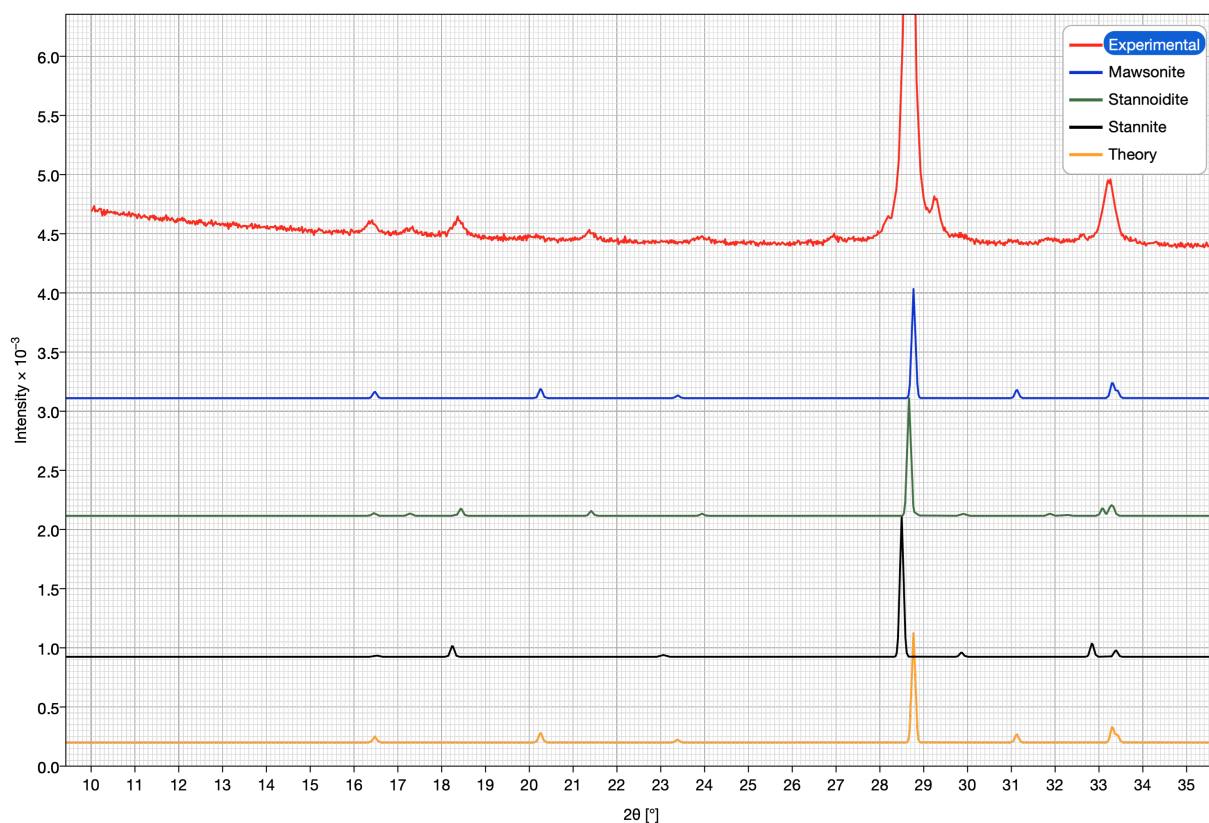


Figure 2: X-ray powder diffraction patterns for the DFT relaxed (yellow) and experimental (blue) mawsonite $\text{Cu}_6\text{Fe}_2\text{SnS}_8$ as reported by Szymanski et al.⁴⁴ We also report the pattern of a sample (red) with composition $\text{Cu}_6\text{Fe}_2\text{SnS}_8$, prepared under similar conditions to those reported by Zhang et al.²⁷ For reference we include the experimental patterns for stannite (black) and stannoidite (green); these structures are from the American Mineralogist Crystal Structure Database.⁴⁵

Electronic structure and transport properties

Experimentally copper-sulfides with a large content of copper with respect to other metals, *i.e.* $[\text{Cu}]/[\text{M}] > 1$, exhibit p-type conductivity.^{20,48,49} Indeed, the ability of the univalent copper to accommodate tetrahedral coordination and to form a tridimensional framework is favorable to the delocalization of p-type carriers. These considerations, together with charge balance, suggest: Cu^{+1} , Fe^{+3} , Sn^{+4} , S^{-2} ; these are confirmed by Mössbauer experiments where mawsonite is shown to contain only ferric iron.⁵⁰ To address the general features of the electronic structure of $\text{Cu}_6\text{Fe}_2\text{SnS}_8$, we computed the spin polarized band structure and the projected DOS in Figure 3, where spin polarization is considered to properly describe the transition metal Fe^{3+} . Mawsonite is a semiconductor which experimentally tends to exhibit p-type transport, therefore our interest is in the upper valence band (VB) mainly composed of strongly hybridized S *p*-orbitals and Cu *d*-orbitals. More specifically, the projected density of states resolved by site shows a major contribution from Cu(4i) with respect to Cu(2g) in the energy range close to Fermi, see Figure S1a Supporting Information. This feature suggests that Cu(4i)-S bonding builds a 2D conductive network with negligible contribution from other species. Conductive networks have been observed in other diamond-like copper-sulfides⁵¹ where Cu-(S,Se) atoms determine the relevant electronic states for the transport properties. Despite the strong localized character of the Cu *d*-orbitals, the hybridization with S *p*-orbitals favors the delocalization of p-type carrier and provides heavy but still conductive bands with remarkable features for thermoelectric transport; near the Fermi level, Figure 3 points to a multi-valley character with large effective masses especially at M, Z, R high symmetry points of the Brillouin zone, two features that contribute to a large Seebeck coefficient and enhanced electrical conductivity. In this perspective, out-of-network atoms could serve as doping/alloying sites to tune other properties without affecting the conducting states. Also, Figure 3 displays hybridized iron *d*- and sulfur *p*-orbitals at the bottom of conduction band (CB), where a single and relatively heavy band singles out, possibly leading to spin polarized n-type transport.

The band structure in Figure 3 corresponds to an antiferromagnetic ordered ground

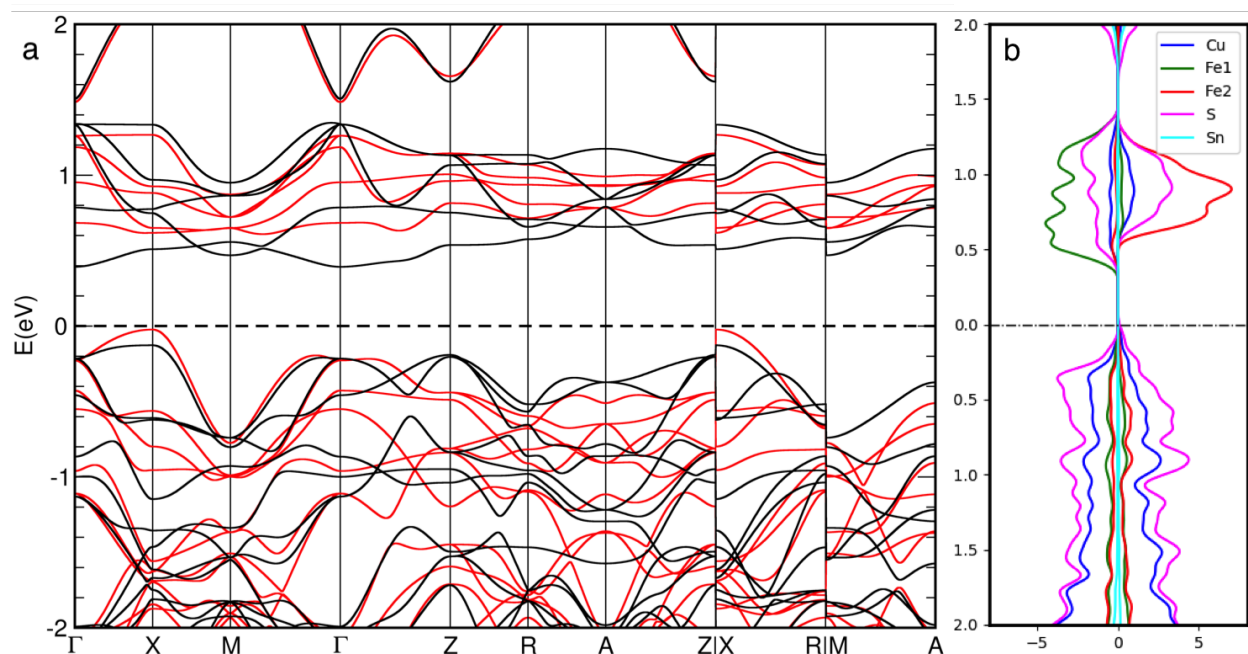


Figure 3: Spin polarized electronic band structure (a) and atom projected density of states (b) of $\text{Cu}_6\text{Fe}_2\text{SnS}_8$. Spin up (down) channel is represented in red (black). Hubbard U corrections are computed self-consistently within the ACBN0 approach: $U(\text{Cu})=6.595$ eV, $U(\text{Fe in } 1b)=0.551$ eV, $U(\text{Fe in } 1c)=0.518$ eV, $U(\text{S})=0.952$ eV, $U(\text{Sn})= 0.002$ eV

state. This configuration is energetically favored with respect to the ferromagnetic one, $E_{FM} - E_{AM}=0.16$ eV per formula unit, and the large energy difference suggests a high ordering temperature, in agreement with experimental results for another tetragonal sulfide, the chalcopyrite CuFeS_2 ($T_{Nee1}=823\text{K}$).^{52,53} Further, spin majority and minority bands have direct and indirect gap respectively, $\Delta E^\uparrow = 0.6$ eV and $\Delta E^\downarrow = 0.4$ eV. The two spin channels, up (red) and down (black), are shifted one with respect to the other, thus producing a spin polarized isolated band in the bottom of CB. The shift arises because of the asymmetry in the magnetic moment distribution between the two iron sites, $\mu_{\text{Fe}1} = 3.01\mu_B$ and $\mu_{\text{Fe}2} = -2.89\mu_B$. This effect is highlighted also by different profiles in the projected DOS (compare green to purple curve in Figure 3b), the values of the Hubbard correction, U , see Figure 3) as well as in local spin polarization isosurface in Figure 1. The unusually low value of the magnetic moments for Fe^{3+} are due to deviations from the ionic picture⁵⁴

1
2
3 which are observed by inspecting the electron localization factor, Figure 4.
4

5 The features revealed in the band structure analysis have a correspondence in the depen-
6 dence on temperature of the Seebeck coefficient S and electrical conductivity σ , displayed in
7 Figure 5. For both the VB and CB, σ increases with temperature as it is usual for semicon-
8 ductors. Seebeck coefficients, which do not depend on the choice of the constant relaxation
9 time, are predicted in excess of $250 \frac{\mu V}{K}$ for light p-type doping at 500 K. Comparable nega-
10 tive values for light n-type were obtained. As mentioned in the computational method, our
11 Boltzmann transport calculations consider a constant scattering time τ across the range of
12 temperature. The conductivities (with our assumption of $\tau = 10^{-15}$ s) are monotonically
13 increasing with temperature and quite small. The smaller values observed for the CB are
14 due to the presence of the “isolated” single band at the bottom of the conduction band. Due
15 to the uncertainty on the value of the relaxation time, conductivity predictions should be
16 taken with caution. Indeed $\tau = 10^{-14}$ s will make mawsonite much more promising for ther-
17 moelectric applications. We noticed, however, that with $\tau = 10^{-15}$ s, despite the difference
18 in the crystal structure pointed out when discussing the crystal structure, the computed S
19 and σ are in agreement with experimental data reported in Zhang et al.²⁷ once the chemi-
20 cal potential is shifted toward the valence band, $\mu = -0.11 eV$. This may indicate that the
21 transport properties are mainly determined by common features such as a similar conductive
22 network (Cu-S atoms).
23
24
25
26
27
28
29
30
31
32
33
34
35
36
37
38
39
40
41
42
43
44

45 **Vibrational properties and lattice thermal conductivity**

46 The phonon dispersion and atom-resolved phonon DOS computed by first principles are in
47 Figure 6. Even though calculations within the harmonic approximation do not provide any
48 direct information on the thermal conductivity, they constitute a starting point to discuss
49 heat transport, especially the acoustic modes with larger velocity. Low frequencies optic
50
51
52
53
54
55
56
57
58
59
60

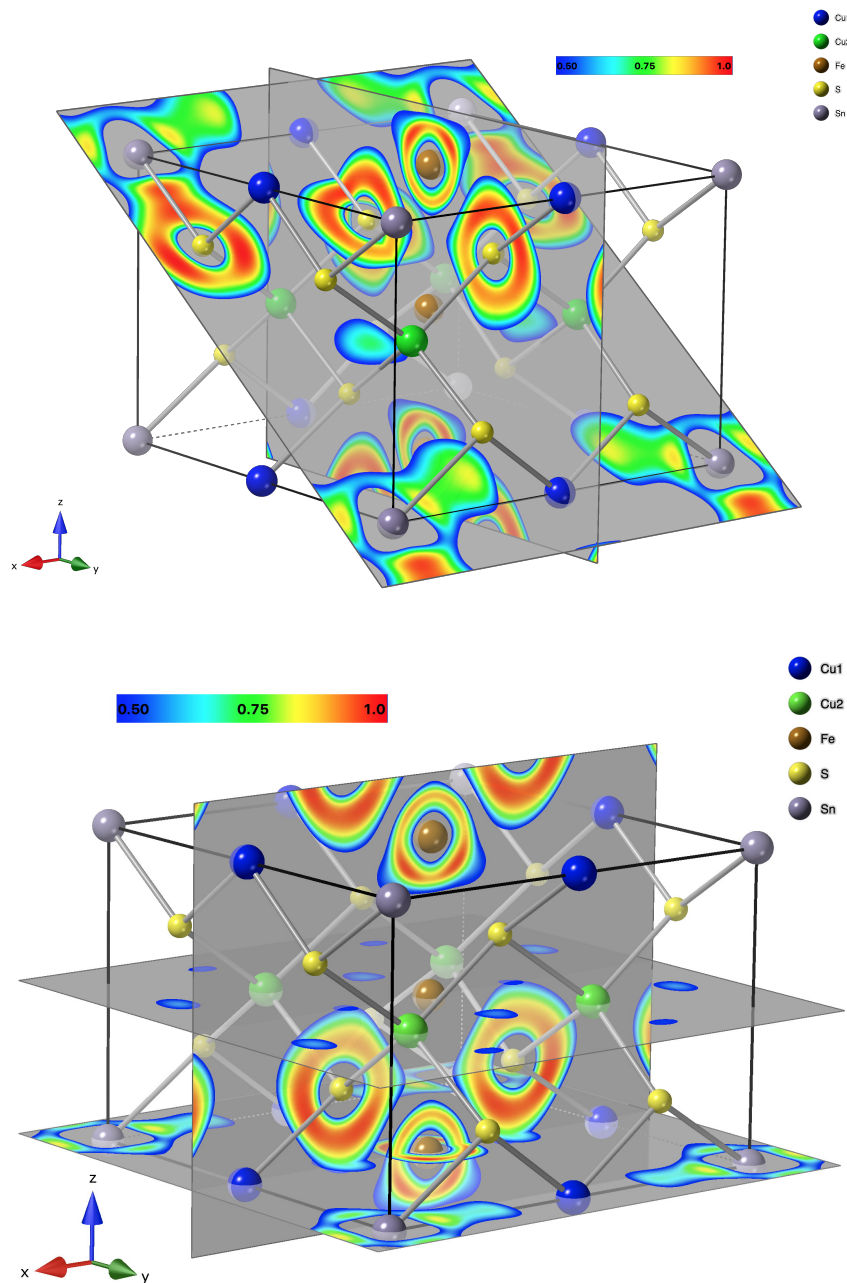


Figure 4: Contour of the electron localization factor shown on selected planes. Contour plot of the electron localization factor (ELF) shown on selected planes. Atoms are colored as in Figure 1. Values for the ELF range between 0 and 1: ELF=0.5 (corresponding to the blue contours) indicates free electron behavior and ELF=1.0 (red contour) indicates perfect localization. Values smaller than 0.5 are less significant and usually point to small local electron density. Substantial localization is observed in proximity of S and one Fe (1b). Directional covalent bonds are observed between the Sn and the S. The plane containing Cu(4i) exhibit pockets of “free electron” (ELF=0.5) potentially associated with larger metallicity. These considerations agree with the COHP analysis shown in the Figure S2 Supporting Information.

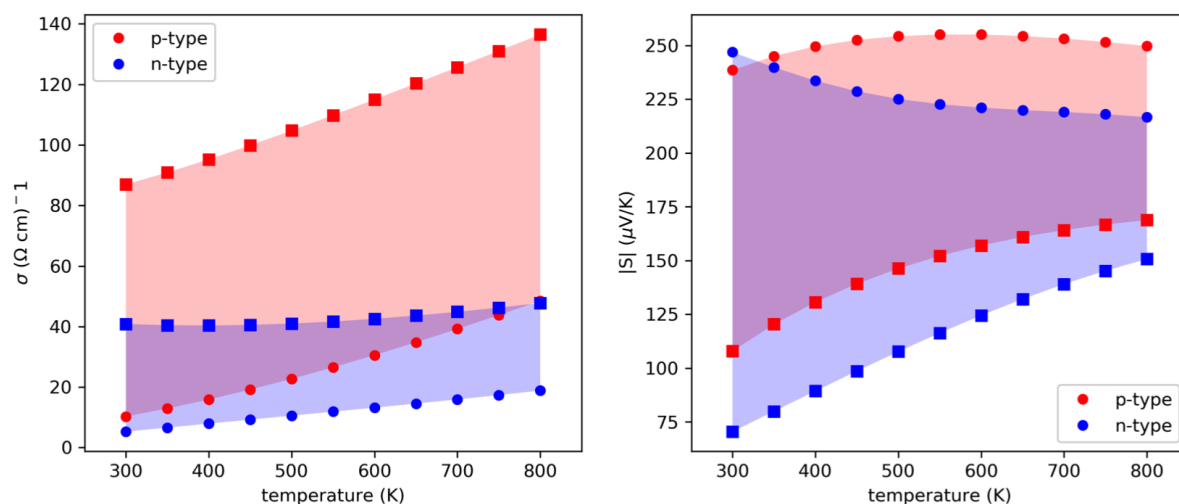


Figure 5: Temperature dependence of electrical conductivity (left panel) and absolute value of the Seebeck coefficient (right panel). The red and blue shade highlight the range of values taken by these quantities as the chemical potential moves inside valence and conduction band, respectively. Red (blue) dots represent the top (bottom) of the valence (conduction) band, while red (blue) squares refers to a chemical potential in the valence (conduction) band ($\Delta\mu = 0.1\text{eV}$). Resistivities were computed assuming $\tau = 10^{-15}$ s.

modes sharing the frequency window with acoustic vibrations are a source of phonon scattering and affects the thermal transport. Despite the traditional use of heavy ions as rattlers to open scattering channels,^{17,55} recently similar performance have been reported in materials containing light elements, such as colusite $\text{Cu}_{26}\text{V}_2\text{Sn}_6\text{S}_{32}$ ²³ and BiOCuQ ($\text{Q} = \text{Se}, \text{Te}$).¹⁵ Low frequency modes centered around $40\text{-}60 \text{ cm}^{-1}$ appear in mawsonite phonon dispersion in Figure 6. The atom resolved DOS suggests that the Cu contribution at low frequency exceeds the ones from other species. Due to the light Cu mass, we must assume very weak bonds near Cu sites. In order to evaluate the role of Cu in lowering the lattice thermal conductivity, we use the quasi-harmonic approximation to estimate the degree of anharmonicity of mawsonite through the mode-resolved Grüneisen parameter γ_{qj} , see Eq. [6], and its atoms projection as a function of the frequency. Our results, displayed in Figure 7, clearly indicate that modes are highly anharmonic throughout the spectrum, but specifically in the low frequency range $50\text{-}175 \text{ cm}^{-1}$, see Figure 7a, where the major contribution comes from Cu

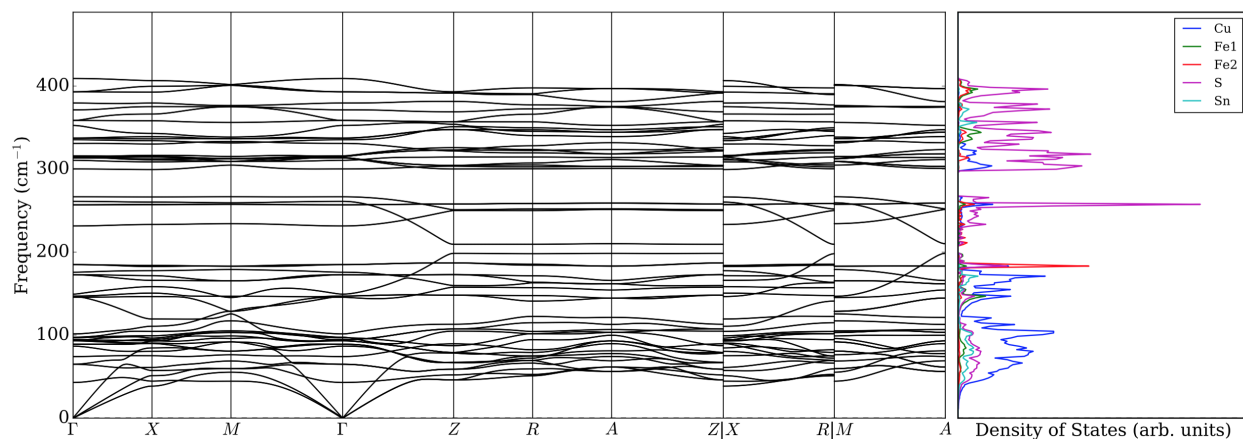


Figure 6: Phonon dispersion and atom-projected vibrational density of states of $\text{Cu}_6\text{Fe}_2\text{SnS}_8$. Notice the prominent role of Cu at low frequency; optic modes at frequency lower than 100 cm^{-1} contribute to scattering phenomena that lower the lattice thermal conductivity.

ions, see Figure 7b. This finding also support the conjecture that Cu has a special role as a weakly bonded component in mawsonite.

The temperature dependence of the total thermal conductivity κ (squares) and its electronic κ_{el} (dots) and lattice (green dots) components κ_{latt} is presented in Figure 8. κ_{tot} decreases on the whole temperature range from 0.6 to $0.23 \text{ W m}^{-1} \text{ K}^{-1}$, and is dominated by the lattice component. Similar behavior is observed for p- and n-type doping. Based on the analysis of the vibrational spectra, the origin of this low thermal conductivity is mainly attributed to the scattering effects induced by the disordered Cu, that scatter long wavelength phonons. This is confirmed by the sound velocities for acoustic phonons reported in Table S2 Supporting Information. Mawsonite's values appear sensibly higher than the ones reported for SnSe.⁵⁶ The close values for the thermal conductivities for the two compounds suggest that anharmonic effects in mawsonite plays a major role in getting a thermal conductivity as low as for SnSe. In this picture low thermal conductivity depends on the coexistence of weakly bonded quasi-liquid subsystems within a crystalline matrix. This is different to the traditional phonon-glass electron-crystal paradigm as understood in cage-materials, where instead there is a disordered set of non-interacting point defects. Mawsonite has weakly-bonded component (Cu) whose mobility is suppressed due to the absence

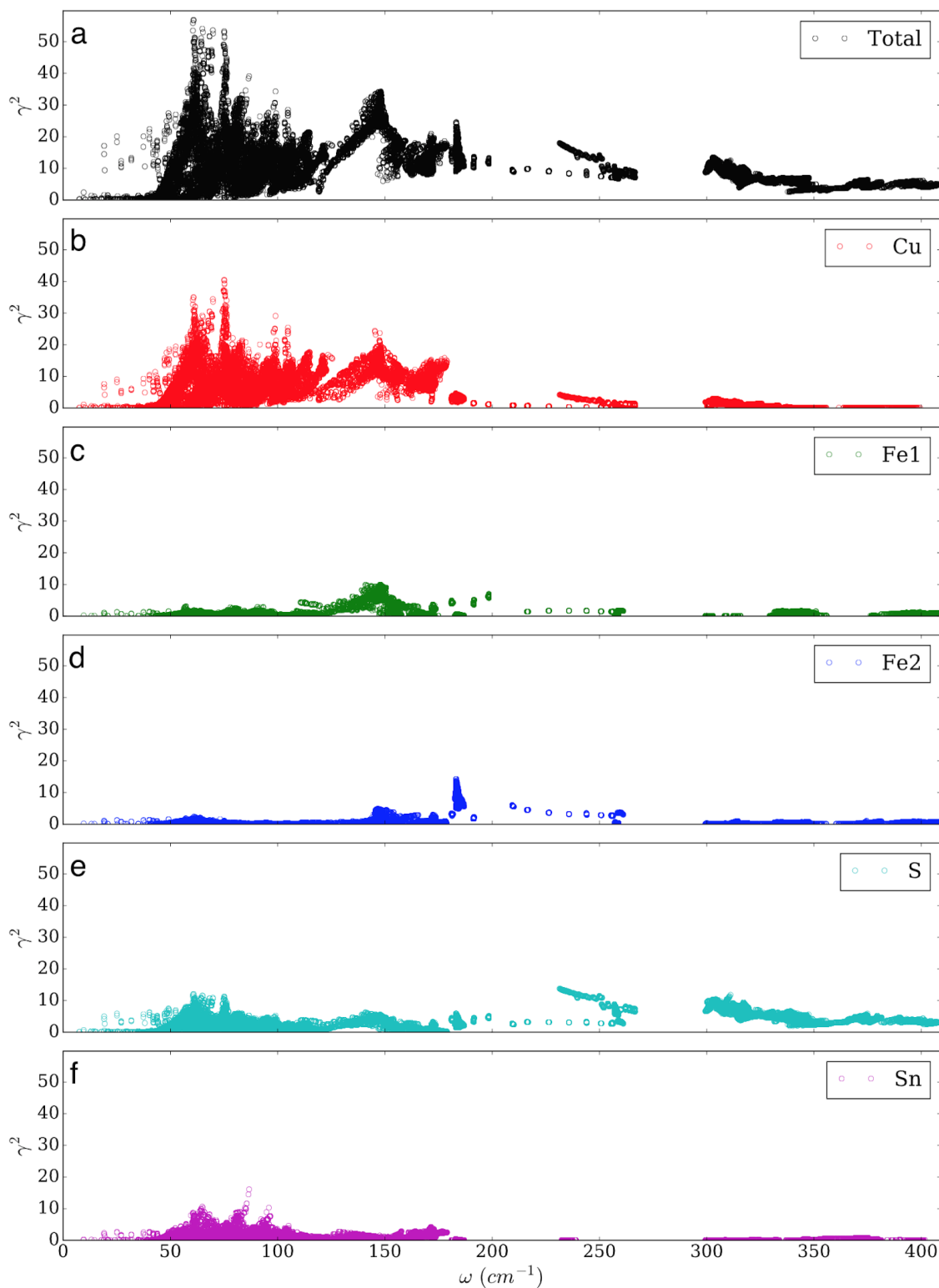


Figure 7: (a) Mode resolved Grüneisen parameter γ_{qj} as a function of mode frequency; (b-f) contribution of each atomic species to the total Grüneisen as a function of the mode frequency.

of a suitable diffusion path. This is definitely relevant for thermoelectric application, given the detrimental effect of ion migration to the device.

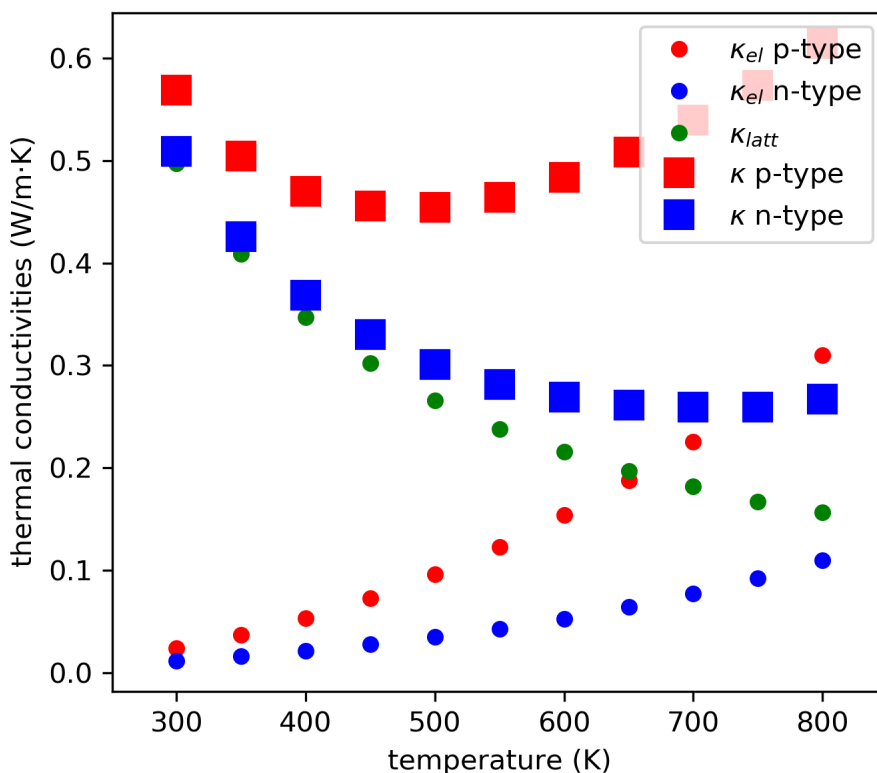


Figure 8: Individual components and total thermal conductivity computed according to the Debye-Callaway model as a function of temperature for different chemical potentials: electronic component κ_{el} calculated at top of the valence band (red dots) and at bottom of the conduction band (blue dots), lattice component κ_{lat} (green dots) and total thermal conductivity $\kappa_{el} + \kappa_{lat}$ for p-type mawsonite (red squares) and n-type (blue squares).

Chemical substitutions

Chemical replacement in prototypical materials has been extensively used to optimize the functional properties of thermoelectric materials. Starting from the mawsonite structure, we substituted Fe with Ni, S with Se, Te, and Sn with Ge, Pb. We have checked the thermodynamical stability of the resulting compounds by computing the formation energy

E_f as the difference between the total energy of the substituted compound and the total energy of each component in the crystalline form: $E_f = E[Cu_6X_2YZ_8] - 6E[Cu] - 2E[X] - E[Y] - 8E[Z]$. All the compounds are shown to be stable, as reported in the Table S1 Supporting Information. The band structure and projected DOS of the pristine mawsonite are displayed in Figure S3 Supporting Information on a larger energy window, where it is more evident that the conductive network formed by CuS tetrahedra defines the manifold at the bottom of the valence band and the one in the conduction band above 3 eV. In between these energy windows, we observe the contribution of other cations: a manifold of flat bands from the d -orbitals of the transition metal ions (Fe) strongly hybridized with S p -orbitals, and a highly dispersive band arising from hybridization of Sn s -orbital with S p -orbitals. The Ni substitution, see Figure S4 Supporting Information, changes the magnetic character of the pristine mawsonite and shifts the d -manifold down toward the valence band forming a metallic band structure for all the Ni-compounds. Similarly the substitutions of Sn mainly affect the s -band that is shifted from the region close to 3 eV to the transition metal manifold as one moves from Ge to Pb. The isolated bands is obtained as long as there is energy difference between s - and p - orbitals of the IV group element, and such difference increases moving along the IV group elements, from Ge to Pb. Finally, the effect of the chalcogenide substitution: from band structures (Figure S5-S20 Supporting Information), we observe the common trend that sulfides have generally a larger band gap (more ionicity), that decreases with Se, Te substitution due to the stronger hybridization between p - and d -orbitals. Sn substitutions preserve the features we previously pointed out for mawsonite (such as flat band and valley degeneracy).

Overall the semiconductor character is preserved in $Cu_6Fe_2SnSe_8$, $Cu_6Fe_2GeX_8$ with $X=S$, Se, and Te, as well as in $Cu_6Fe_2PbS_8$. All the other cases, we investigated, result in a metallic band structure due to a relative shift of Cu-S manifold and transition metal bands.

Conclusions

Materials with the mawsonite structure, namely $\text{Cu}_6\text{X}_2\text{YZ}_8$ with $\text{X}=\text{Fe}, \text{Ni}$, $\text{Y}=\text{Ge}, \text{Pb}$, and $\text{Z}=\text{S}, \text{Se}, \text{Te}$, have been studied from the point of view of their thermoelectric potentials for low-cost and environmentally sound, low-grade energy recovery systems. We used state-of-the-art first principles methodologies based on self-consistent DFT+U to compute band structure, projected density of states (DOS), and electronic transport coefficients. In addition, in selected cases, we determined the phonon dispersions and the lattice thermal conductivity. Our findings indicate that the low thermal conductivity is due to low-frequency vibrational modes of the copper atoms that activate scattering channels for acoustic phonons thus affecting the heat transport. As corroborated by the Grüneisen calculations, mawsonite has a quasi-liquid disordered component (Cu) within the crystalline matrix but do not present ion migration due to the absence of suitable diffusion paths. The analysis of the transport coefficients supported by band structure calculation highlights a 2D conductive network built by Cu(4i)-S bonds which determines the TE properties of the p-type mawsonite. The covalency of the Cu(4i)-S bonding causes an asymmetry in the distribution of the Fe magnetic moments, that originates an isolated band possibly leading to a spin-polarized n-type transport. Finally, chemical substitution of out of network species shifts the manifolds in the conduction band and change the compound character from semiconducting to metallic, thus consequently affecting the magnetic order. Overall, as displayed in Figure 9, the combination of good electronic transport and low thermal conductivity provides promising TE performance in the medium temperature range with a ZT value that point to 0.5 @ 750 K.

Acknowledgement

We thank Andrew Supka for technical assistance and useful discussions. We thank Virginia Carnevali for graphic assistance. The members of the AFLOW Consortium (<http://www.aflow.org>) acknowledge DOD-ONR support DOD-ONR (Grants N000141310635 and N000141512266).

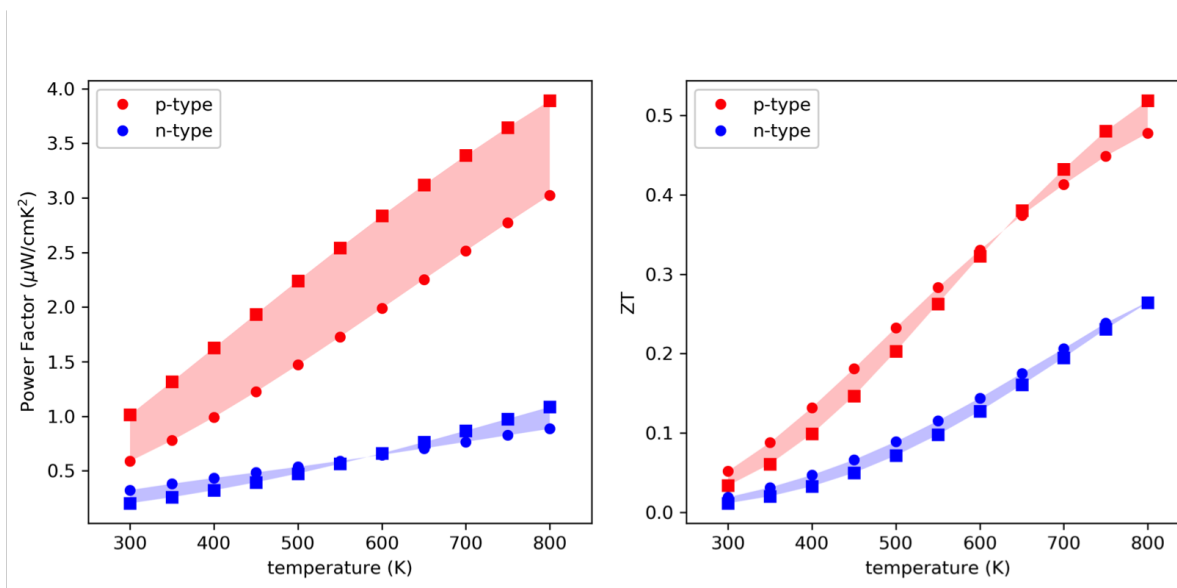


Figure 9: Temperature dependence of power factor (left pane) and ZT (right panel). The red and blue shade highlight the range of values taken by these quantities as the chemical potential moves inside valence and conduction band, respectively. Red (blue) dots represent the top (bottom) of the valence (conduction) band, while red (blue) squares refers to a chemical potential in the valence (conduction) band ($\Delta\mu = 0.1eV$).

Finally, we acknowledge the High Performance Computing Center at the University of North Texas and the Texas Advanced Computing Center at the University of Texas, Austin.

Supporting Information Available

Projected DOS contribution of Cu(4i) and Cu(2g) species, spin majority and minority contribution to the total DOS, formation energies for all the considered compounds, crystal orbital Hamilton population, sound velocities for mawsonite, parameters for the Debye-Callaway model computed from first-principles, bandstructures and projected DOS of the pristine mawsonite and of all the considered compounds with the mawsonite structure, $Cu_6X_2YZ_8$ with X=Fe, Ni, Y=Ge, Pb, and Z=S, Se, Te.

This material is available free of charge via the Internet at <http://pubs.acs.org/>.

References

- (1) Kajikawa, T. Thermoelectric power generation system recovering industrial waste heat. *Thermoelectrics Handbook: Macro to Nano, CRC/Taylor & Francis., DM Rowe* **2006**, 50–1.
- (2) <https://www.energy.gov>, Department of Energy, USA.
- (3) Zevenhoven, R.; Beyene, A. The relative contribution of waste heat from power plants to global warming. *Energy* **2011**, *36*, 3754–3762.
- (4) Caillat, T.; Fleurial, J.-P.; Borshchevsky, A. Preparation and thermoelectric properties of semiconducting Zn_4Sb_3 . *J. Phys. Chem. Solids* **1997**, *58*, 1119 – 1125.
- (5) Hsu, K. F.; Loo, S.; Guo, F.; Chen, W.; Dyck, J. S.; Uher, C.; Hogan, T.; Polychroniadis, E. K.; Kanatzidis, M. G. Cubic $\text{AgPb}_m\text{SbTe}_{2+m}$: Bulk thermoelectric materials with high figure of merit. *Science* **2004**, *303*, 818–821.
- (6) Liu, W.; Tan, X.; Yin, K.; Liu, H.; Tang, X.; Shi, J.; Zhang, Q.; Uher, C. Convergence of conduction bands as a means of enhancing thermoelectric performance of n -type $\text{Mg}_2\text{Si}_{1-x}\text{Sn}_x$ solid solutions. *Phys. Rev. Lett.* **2012**, *108*, 166601.
- (7) Poudeu, P.; D'Angelo, J.; Downey, A.; Short, J.; Hogan, T.; Kanatzidis, M. High thermoelectric figure of merit and nanostructuring in bulk p -type $\text{Na}_{1-x}\text{Pb}_m\text{Sb}_y\text{Te}_{m+2}$. *Angew. Chem. Int. Ed.* **2006**, *45*, 3835–3839.
- (8) Tan, G.; Shi, F.; Hao, S.; Zhao, L.-D.; Chi, H.; Zhang, X.; Uher, C.; Wolverton, C.; Dravid, V.; Kanatzidis, M. Non-equilibrium processing leads to record high thermoelectric figure of merit in PbTe-SrTe . *Nat. Commun.* **2016**, *7*, 12167.
- (9) Pei, Y.; Lensch-Falk, J.; Toberer, E. S.; Medlin, D. L.; Snyder, G. J. High thermoelectric performance in PbTe due to large nanoscale Ag_2Te precipitates and La doping. *Adv. Funct. Mater.* **2011**, *21*, 241–249.

- 1
2
3 (10) Snyder, J. G.; Toberer, E. S. Complex thermoelectric materials. *Nat. Mater.* **2008**, *7*,
4 105.
5
6
7
8 (11) Tan, G.; Zhao, L.-D.; Kanatzidis, M. G. Rationally designing high-performance bulk
9 thermoelectric materials. *Chem. Rev.* **2016**, *116*, 12123–12149.
10
11
12 (12) Yang, J.; Xi, L.; Qiu, W.; Wu, L.; Shi, X.; Chen, L.; Yang, J.; Zhang, W.; Uher, C.;
13 Singh, D. J. On the tuning of electrical and thermal transport in thermoelectrics: an
14 integrated theory–experiment perspective. *Npj Comput. Mater.* **2016**, *2*, 15015.
15
16
17 (13) Pavan Kumar, V.; Supka, A. R.; Lemoine, P.; Lebedev, O. I.; Raveau, B.; Suekuni, K.;
18 Nassif, V.; Al Rahal Al Orabi, R.; Fornari, M.; Guilmeau, E. High power factors of
19 thermoelectric colusites $\text{Cu}_{26}\text{T}_2\text{Ge}_6\text{S}_{32}$ (T= Cr, Mo, W): toward functionalization of
20 the conductive “Cu–S” Network. *Adv. Energy Mater.* **2019**, *9*, 1803249.
21
22
23 (14) Lai, W.; Wang, Y.; Morelli, D. T.; Lu, X. From bonding asymmetry to anharmonic
24 rattling in $\text{Cu}_{12}\text{Sb}_4\text{S}_{13}$ tetrahedrites: when lone-pair electrons are not so lonely. *Adv.*
25 *Funct. Mater.* **2015**, *25*, 3648–3657.
26
27
28 (15) Vaqueiro, P.; Al Orabi, R. A. R.; Luu, S. D.; Guelou, G.; Powell, A. V.; Smith, R.;
29 Song, J.-P.; Wee, D.; Fornari, M. The role of copper in the thermal conductivity of
30 thermoelectric oxychalcogenides: do lone pairs matter? *Phys. Chem. Chem. Phys.*
31 **2015**, *17*, 31735–31740.
32
33
34 (16) Venkatasubramanian, R.; Silvola, E.; Colpitts, T.; O’Quinn, B. *Materials for Sustain-*
35 *able Energy*; Co-Published with Macmillan Publishers Ltd, UK, 2012; pp 120–125.
36
37
38 (17) Shi, X.; Chen, L.; Uher, C. Recent advances in high-performance bulk thermoelectric
39 materials. *Int. Mater. Rev.* **2016**, *61*, 379–415.
40
41
42 (18) Poudel, B.; Hao, Q.; Ma, Y.; Lan, Y.; Minnich, A.; Yu, B.; Yan, X.; Wang, D.;
43 Muto, A.; Vashaee, D.; Chen, X.; Liu, J.; Dresselhaus, M. S.; Chen, G.; Ren, Z.

- High-Thermoelectric Performance of Nanostructured Bismuth Antimony Telluride Bulk Alloys. *Science* **2008**, *320*, 634–638.
- (19) He, Y.; Day, T.; Zhang, T.; Liu, H.; Shi, X.; Chen, L.; Snyder, G. J. High thermoelectric performance in non-toxic earth-abundant copper sulfide. *Adv. Mater.* **2014**, *26*, 3974–3978.
- (20) Xu, L.; T., M. D.; Yi, X.; Fei, Z.; Vidvuds, O.; Hang, C.; Xiaoyuan, Z.; Ctirad, U. High performance thermoelectricity in earth-abundant compounds based on natural mineral tetrahedrites. *Adv. Energy Mater.* **2013**, *3*, 342–348.
- (21) Suekuni, K.; Tsuruta, K.; Kunii, M.; Nishiate, H.; Nishibori, E.; Maki, S.; Ohta, M.; Yamamoto, A.; Koyano, M. High-performance thermoelectric mineral $\text{Cu}_{12-x}\text{Ni}_x\text{Sb}_4\text{S}_{13}$ tetrahedrite. *J. Appl. Phys.* **2013**, *113*, 043712.
- (22) Suekuni, K.; Kim, F. S.; Nishiate, H.; Ohta, M.; Tanaka, H. I.; Takabatake, T. High-performance thermoelectric minerals: colusites $\text{Cu}_{26}\text{V}_2\text{M}_6\text{S}_{32}$ (M=Ge, Sn). *Appl. Phys. Lett.* **2014**, *105*, 132107.
- (23) Bourgès, C.; Bouyrie, Y.; Supka, A. R.; Al Rahal Al Orabi, R.; Lemoine, P.; Lebedev, O. I.; Ohta, M.; Suekuni, K.; Nassif, V.; Hardy, V.; Daou, R.; Miyazaki, Y.; Fornari, M.; Guilmeau, E. High-performance thermoelectric bulk colusite by process controlled structural disordering. *JACS* **2018**, *140*, 2186–2195.
- (24) Qiu, P.; Zhang, T.; Qiu, Y.; Shi, X.; Chen, L. Sulfide bornite thermoelectric material: a natural mineral with ultralow thermal conductivity. *Energy Environ. Sci.* **2014**, *7*, 4000–4006.
- (25) Pavan Kumar, V.; Barbier, T.; Caignaert, V.; Raveau, B.; Daou, R.; Malaman, B.; Caër, G. L.; Lemoine, P.; Guilmeau, E. Copper hyper-stoichiometry: the key for the optimization of thermoelectric properties in stannoidite $\text{Cu}_{8+x}\text{Fe}_{3-x}\text{Sn}_2\text{S}_{12}$. *J. Phys. Chem. C* **2017**, *121*, 16454–16461.

- 1
2
3 (26) Pavan Kumar, V.; Paradis-Fortin, L.; Lemoine, P.; Caignaert, V.; Raveau, B.; Mala-
4 man, B.; Le Caër, G.; Cordier, S.; Guilmeau, E. Designing a thermoelectric copper-rich
5 sulfide from a natural mineral: synthetic germanite $\text{Cu}_{22}\text{Fe}_8\text{Ge}_4\text{S}_{32}$. *Inorg. Chem.* **2017**,
6 *56*, 13376–13381.
7
8
9
10
11
12 (27) Zhang, R.-z.; Chen, K.; Du, B.; Reece, M. J. Screening for Cu–S based thermoelectric
13 materials using crystal structure features. *J. Mater. Chem. A* **2017**, *5*, 5013–5019.
14
15
16
17 (28) Giannozzi, P.; Baroni, S.; Bonini, N.; Calandra, M.; Car, R.; Cavazzoni, C.; Ceresoli, D.;
18 Chiarotti, G. L.; Cococcioni, M.; Dabo, I.; Corso, A. D.; de Gironcoli, S.; Fabris, S.;
19 Fratesi, G.; Gebauer, R.; Gerstmann, U.; Gougoussis, C.; Kokalj, A.; Lazzeri, M.;
20 Martin-Samos, L.; Marzari, N.; Mauri, F.; Mazzarello, R.; Paolini, S.; Pasquarello, A.;
21 Paulatto, L.; Sbraccia, C.; Scandolo, S.; Sclauzero, G.; Seitsonen, A. P.; Smogunov, A.;
22 Umari, P.; Wentzcovitch, R. M. QUANTUM ESPRESSO: a modular and open-source
23 software project for quantum simulations of materials. *J. Phys. Condens. Matter.* **2009**,
24 *21*, 395502.
25
26
27
28
29
30
31
32
33 (29) Giannozzi, P.; Andreussi, O.; Brumme, T.; Bunau, O.; Nardelli, M. B.; Calandra, M.;
34 Car, R.; Cavazzoni, C.; Ceresoli, D.; Cococcioni, M.; Colonna, N.; Carnimeo, I.;
35 Corso, A. D.; de Gironcoli, S.; Delugas, P.; Jr, R. A. D.; Ferretti, A.; Floris, A.;
36 Fratesi, G.; Fugallo, G.; Gebauer, R.; Gerstmann, U.; Giustino, F.; Gorni, T.; Jia, J.;
37 Kawamura, M.; Ko, H.-Y.; Kokalj, A.; KÅCEÃ§ÃCEkbenli, E.; Lazzeri, M.; Marsili, M.;
38 Marzari, N.; Mauri, F.; Nguyen, N. L.; Nguyen, H.-V.; de-la Roza, A. O.; Paulatto, L.;
39 PoncÃ©, S.; Rocca, D.; Sabatini, R.; Santra, B.; Schlipf, M.; Seitsonen, A. P.; Smo-
40 gunov, A.; Timrov, I.; Thonhauser, T.; Umari, P.; Vast, N.; Wu, X.; Baroni, S. Ad-
41 vanced capabilities for materials modelling with Quantum ESPRESSO. *J. Phys. Con-*
42 *dens. Matter.* **2017**, *29*, 465901.
43
44
45
46
47
48
49
50
51
52
53
54 (30) Supka, A. R.; Lyons, T. E.; Liyanage, L.; D’Amico, P.; Al Orabi, R. A. R.; Mahatara, S.;
55 Gopal, P.; Toher, C.; Ceresoli, D.; Calzolari, A.; Curtarolo, S.; Buongiorno Nardelli, M.;

- 1
2
3
4
5
6
7
8
9
10
11
12
13
14
15
16
17
18
19
20
21
22
23
24
25
26
27
28
29
30
31
32
33
34
35
36
37
38
39
40
41
42
43
44
45
46
47
48
49
50
51
52
53
54
55
56
57
58
59
60
- Fornari, M. AFLOW π : A minimalist approach to high-throughput ab initio calculations including the generation of tight-binding hamiltonians. *Comput. Mater. Sci.* **2017**, *136*, 76 – 84.
- (31) Buongiorno Nardelli, M.; Cerasoli, F. T.; Costa, M.; Curtarolo, S.; De Gennaro, R.; Fornari, M.; Liyanage, L.; Supka, A. R.; Wang, H. PAOFLOW: A utility to construct and operate on ab initio Hamiltonians from the projections of electronic wavefunctions on atomic orbital bases, including characterization of topological materials. *Comput. Mater. Sci.* **2018**, *143*, 462 – 472.
- (32) Agapito, L. A.; Curtarolo, S.; Buongiorno Nardelli, M. Reformulation of DFT + U as a pseudohybrid Hubbard density functional for accelerated materials discovery. *Phys. Rev. X* **2015**, *5*, 011006.
- (33) Gopal, P.; Fornari, M.; Curtarolo, S.; Agapito, L. A.; Liyanage, L. S. I.; Buongiorno Nardelli, M. Improved predictions of the physical properties of Zn- and Cd-based wide band-gap semiconductors: A validation of the ACBN0 functional. *Phys. Rev. B* **2015**, *91*, 245202.
- (34) Perdew, J. P.; Burke, K.; Ernzerhof, M. Generalized gradient approximation made simple. *Phys. Rev. Lett.* **1996**, *77*, 3865–3868.
- (35) Gopal, P.; De Gennaro, R.; Silva dos Santos Gusmao, M.; Al Orabi, R.; Wang Al Rahal, H.; Curtarolo, S.; Fornari, M.; Buongiorno Nardelli, M. Improved electronic structure and magnetic exchange interactions in transition metal oxides. *J. Phys. Condens. Matter.* **2017**, *29*, 444003.
- (36) Perdew, J. P.; Ruzsinszky, A.; Csonka, G. I.; Vydrov, O. A.; Scuseria, G. E.; Constantin, L. A.; Zhou, X.; Burke, K. Restoring the density-gradient expansion for exchange in solids and surfaces. *Phys. Rev. Lett.* **2008**, *100*, 136406.

- 1
2
3 (37) D'Amico, P.; Agapito, L.; Catellani, A.; Ruini, A.; Curtarolo, S.; Fornari, M., Buon-
4 giorno Nardelli; Calzolari, A. Accurate ab initio tight-binding Hamiltonians: effective
5 tools for electronic transport and optical spectroscopy from first principles. *Phys. Rev.*
6 *B* **2016**, *94*, 165166.
7
8
9
10
11 (38) Gravier, L.; Fábíán, A.; Rudolf, A.; Cachin, A.; Wegrowe, J.-E.; Ansermet, J.-P. Spin-
12 dependent thermopower in Co/Cu multilayer nanowires. *J. Magn. Magn. Mater* **2004**,
13 *271*, 153–158.
14
15
16
17 (39) Zhang, Y. First-principles Debye–Callaway approach to lattice thermal conductivity.
18 *Journal of Materiomics* **2016**, *2*, 237 – 247.
19
20
21
22 (40) Zhang, Y.; Skoug, E.; Cain, J.; Ozoliņš, V.; Morelli, D.; Wolverton, C. First-principles
23 description of anomalously low lattice thermal conductivity in thermoelectric Cu-Sb-Se
24 ternary semiconductors. *Phys. Rev. B* **2012**, *85*, 054306.
25
26
27
28
29 (41) Broido, D. A.; Ward, A.; Mingo, N. Lattice thermal conductivity of silicon from em-
30 pirical interatomic potentials. *Phys. Rev. B* **2005**, *72*, 014308.
31
32
33
34 (42) Morelli, D. T.; Heremans, J. P.; Slack, G. A. Estimation of the isotope effect on the
35 lattice thermal conductivity of group IV and group III-V semiconductors. *Phys. Rev.*
36 *B* **2002**, *66*, 195304.
37
38
39
40 (43) Morelli, D. T.; Jovovic, V.; Heremans, J. P. Intrinsically Minimal Thermal Conductivity
41 in Cubic I–V–VI₂ Semiconductors. *Phys. Rev. Lett.* **2008**, *101*, 035901.
42
43
44
45 (44) Szymanski, J. T. The crystal structure of Mawsonite Cu₆Fe₂SnS₈. *Can. Mineral.* **1976**,
46 *14*, 529–535.
47
48
49
50 (45) <http://rruff.geo.arizona.edu/AMS/amcsd.php>,.
51
52
53 (46) Imai, H.; Lee, M. S.; Iida, K.; Fujiki, Y.; Takenouchi, S. Geologic structure and mineral-
54 ization of the xenothermal vein-type deposits in Japan. *Econ. Geol.* **1975**, *70*, 647–676.
55
56
57
58
59
60

- 1
2
3
4
5
6
7
8
9
10
11
12
13
14
15
16
17
18
19
20
21
22
23
24
25
26
27
28
29
30
31
32
33
34
35
36
37
38
39
40
41
42
43
44
45
46
47
48
49
50
51
52
53
54
55
56
57
58
59
60
- (47) Baláž, P.; Hegedüs, M.; Reece, M.; Zhang, R.-Z.; Su, T.; Škorvánek, I.; Briančin, J.; Baláž, M.; Mihálik, M.; Tešínsky, M., et al. Mechanochemistry for thermoelectrics: nanobulk $\text{Cu}_6\text{Fe}_2\text{SnS}_8/\text{Cu}_2\text{FeSnS}_4$ composite synthesized in an industrial mill. *J. Electron. Mater.* **2019**, *48*, 1846–1856.
- (48) Liu, M.-L.; Chen, I.-W.; Huang, F.-Q.; Chen, L.-D. Improved thermoelectric properties of Cu-doped quaternary chalcogenides of $\text{Cu}_2\text{CdSnSe}_4$. *Adv. Mater.* **2009**, *21*, 3808–3812.
- (49) Suekuni, K.; Tsuruta, K.; Ariga, T.; Koyano, M. Thermoelectric properties of mineral tetrahedrites $\text{Cu}_{10}\text{Tr}_2\text{Sb}_4\text{S}_{13}$ with low thermal conductivity. *Appl. Phys. Express* **2012**, *5*, 051201.
- (50) Yamanaka, T.; Kato, A. Mossbauer effect study of ^{57}Fe and ^{119}Sn in stannite, stannoidite, and mawsonite. *Am. Mineral.* **1976**, *61*, 260–265.
- (51) Xi, L.; Zhang, Y. B.; Shi, X. Y.; Yang, J.; Shi, X.; Chen, L. D.; Zhang, W.; Yang, J.; Singh, D. J. Chemical bonding, conductive network, and thermoelectric performance of the ternary semiconductors Cu_2SnX_3 ($X = \text{Se}, \text{S}$) from first principles. *Phys. Rev. B* **2012**, *86*, 155201.
- (52) Takaki, H.; Kobayashi, K.; Shimono, M.; Kobayashi, N.; Hirose, K.; Tsujii, N.; Mori, T. First-principles calculations of Seebeck coefficients in a magnetic semiconductor CuFeS_2 . *Appl. Phys. Lett.* **2017**, *110*, 072107.
- (53) Tsujii, N.; Mori, T. High thermoelectric power factor in a carrier-doped magnetic semiconductor CuFeS_2 . *Appl. Phys. Express* **2013**, *6*, 043001.
- (54) Conejeros, S.; Alemany, P.; Lluell, M.; Moreira, I. d. P. R.; Sánchez, V.; Llanos, J. Electronic structure and magnetic properties of CuFeS_2 . *Inorg. Chem.* **2015**, *54*, 4840–4849.

- 1
2
3 (55) Duan, B.; Yang, J.; Salvador, J. R.; He, Y.; Zhao, B.; Wang, S.; Wei, P.; Ohuchi, F. S.;
4 Zhang, W.; Hermann, R. P.; Gourdon, O.; Mao, S. X.; Cheng, Y.; Wang, C.; Liu, J.;
5 Zhai, P.; Tang, X.; Zhang, Q.; Yang, J. Electronegative guests in CoSb_3 . *Energy Environ. Sci.* **2016**, *9*, 2090–2098.
6
7
8
9
10
11
12 (56) Zhao, L. D.; Lo, S. H.; Zhang, Y.; Sun, H.; Tan, G.; Uher, C.; Wolverton, C.;
13 Dravid, V. P.; Kanatzidis, M. G. Ultralow thermal conductivity and high thermoelectric
14 figure of merit in SnSe crystals. *Nature* **2014**, *508*, 373.
15
16
17
18
19
20
21
22
23
24
25
26
27
28
29
30
31
32
33
34
35
36
37
38
39
40
41
42
43
44
45
46
47
48
49
50
51
52
53
54
55
56
57
58
59
60

Graphical TOC Entry

