

*Preclinical modeling of chronic inhibition of the Parkinson's disease associated kinase LRRK2 reveals altered function of the endolysosomal system in vivo*

Article

Supplemental Material

Creative Commons: Attribution 4.0 (CC-BY)

Kluss, J. H., Mazza, M. C., Li, Y., Manzoni, C., Lewis, P. A., Cookson, M. R. ORCID: <https://orcid.org/0000-0002-1058-3831> and Mamais, A. (2021) Preclinical modeling of chronic inhibition of the Parkinson's disease associated kinase LRRK2 reveals altered function of the endolysosomal system in vivo. *Molecular Neurodegeneration*, 16 (1). 17. ISSN 1750-1326 doi: <https://doi.org/10.1186/s13024-021-00441-8> Available at <https://centaur.reading.ac.uk/96962/>

It is advisable to refer to the publisher's version if you intend to cite from the work. See [Guidance on citing](#).

To link to this article DOI: <http://dx.doi.org/10.1186/s13024-021-00441-8>

Publisher: BioMed Central

All outputs in CentAUR are protected by Intellectual Property Rights law, including copyright law. Copyright and IPR is retained by the creators or other copyright holders. Terms and conditions for use of this material are defined in the [End User Agreement](#).

[www.reading.ac.uk/centaur](http://www.reading.ac.uk/centaur)

**CentAUR**

Central Archive at the University of Reading

Reading's research outputs online

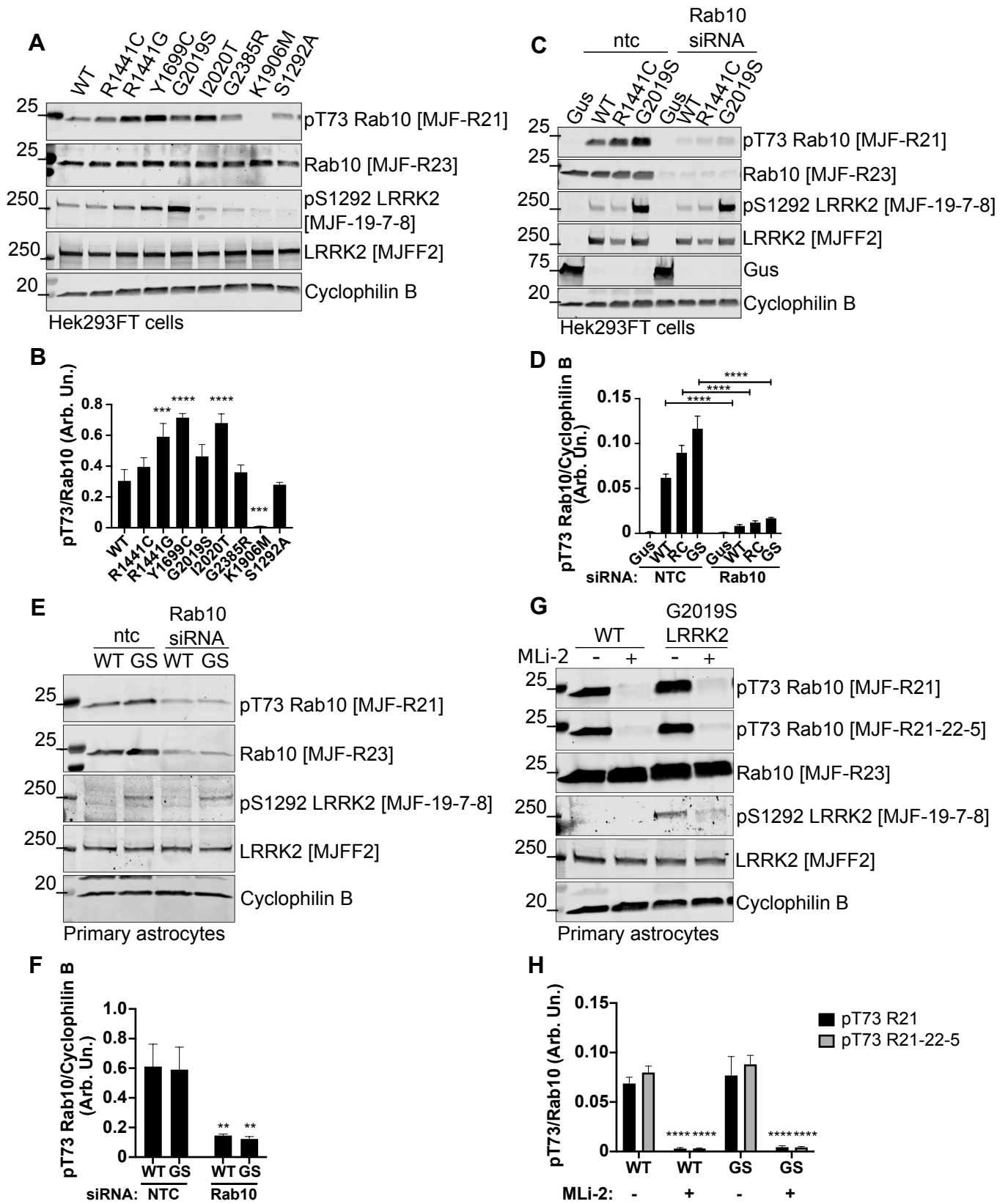


Figure S2

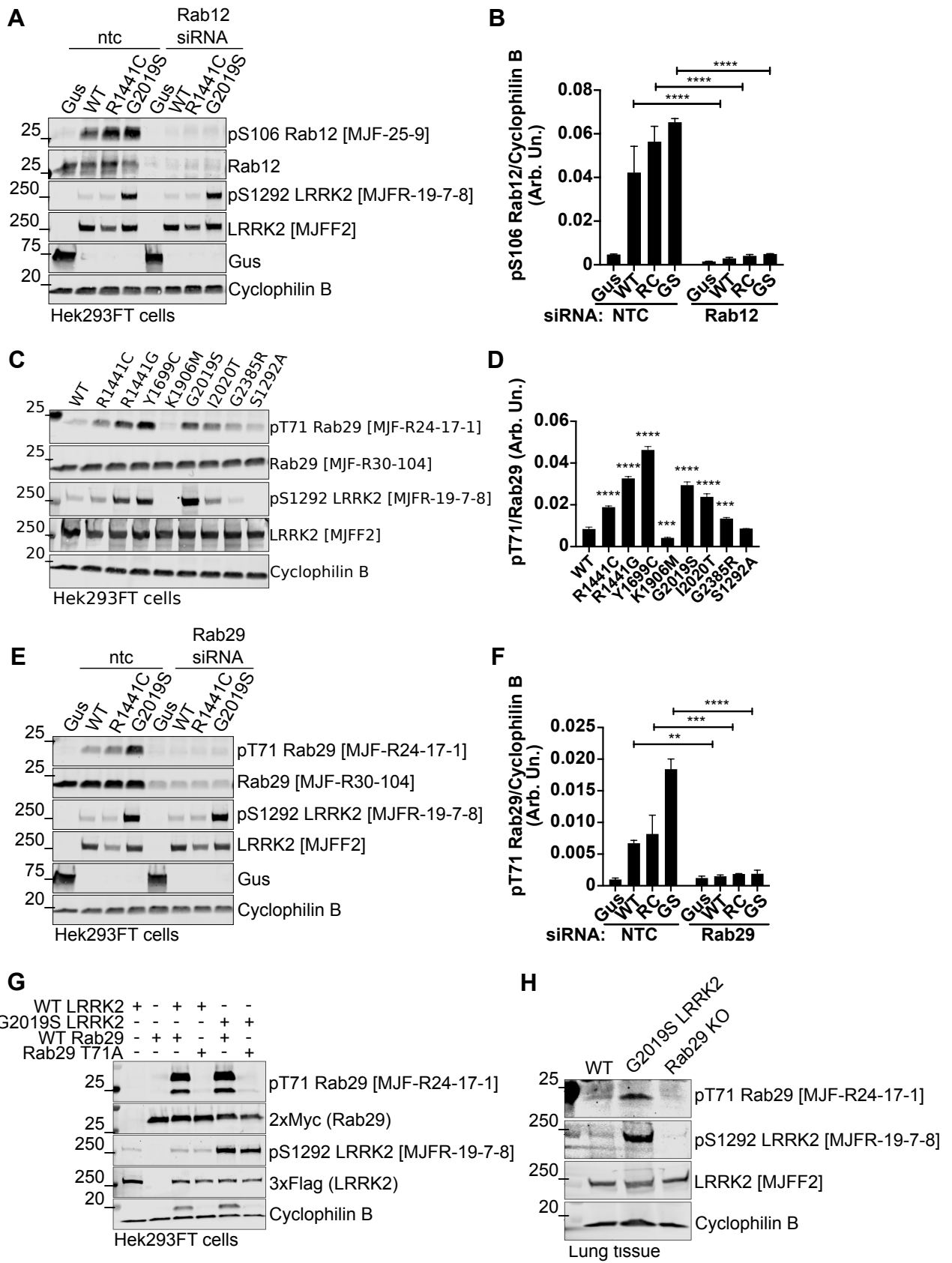
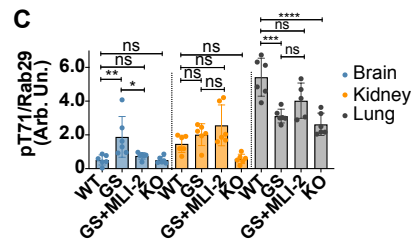
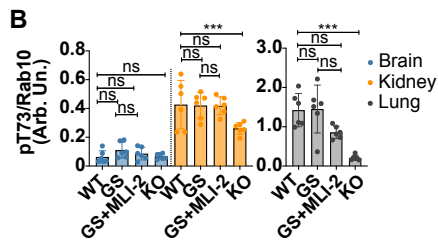
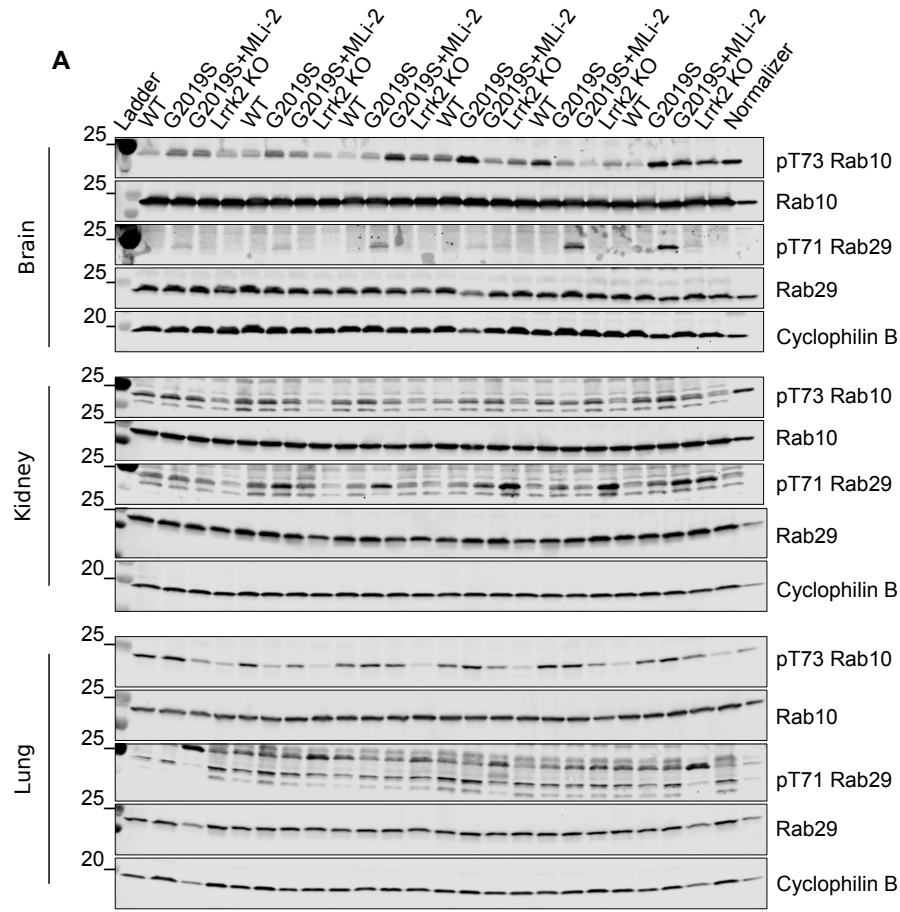


Figure S3

10 Day Cohort



**G**

Pearson correlation coefficient

Acute, dose-response	Dose (mg/kg)	Gender	Age (months)
pT73/total Rab10	0.075	0.304	0.409

Acute, time-course	Time (hrs)	Gender	Age (months)
pT73/total Rab10	0.276	0.515	0.339

Chronic, 10 days	-/+ MLI-2	Gender	Batch
pT73/total Rab10	0.414	0.550	0.456

Chronic, 10 weeks	-/+ MLI-2	Gender	Batch
pT73/total Rab10	0.499	0.162	0.139

10 Week Cohort

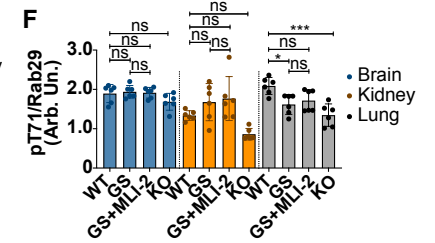
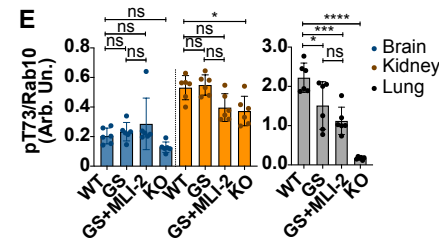
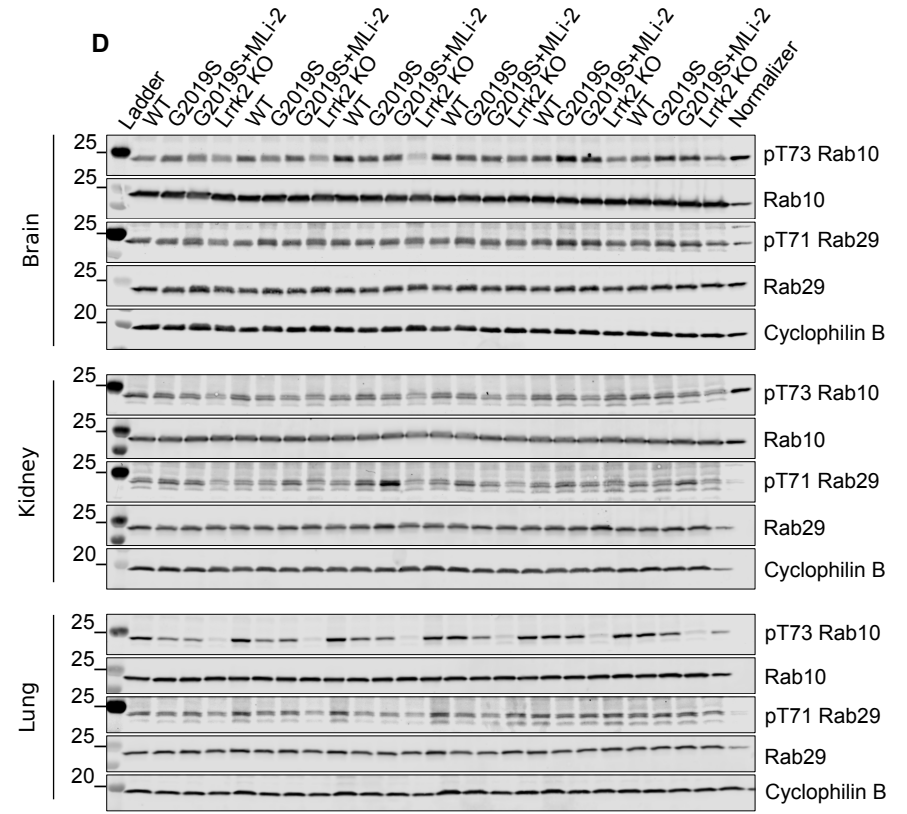


Figure S4

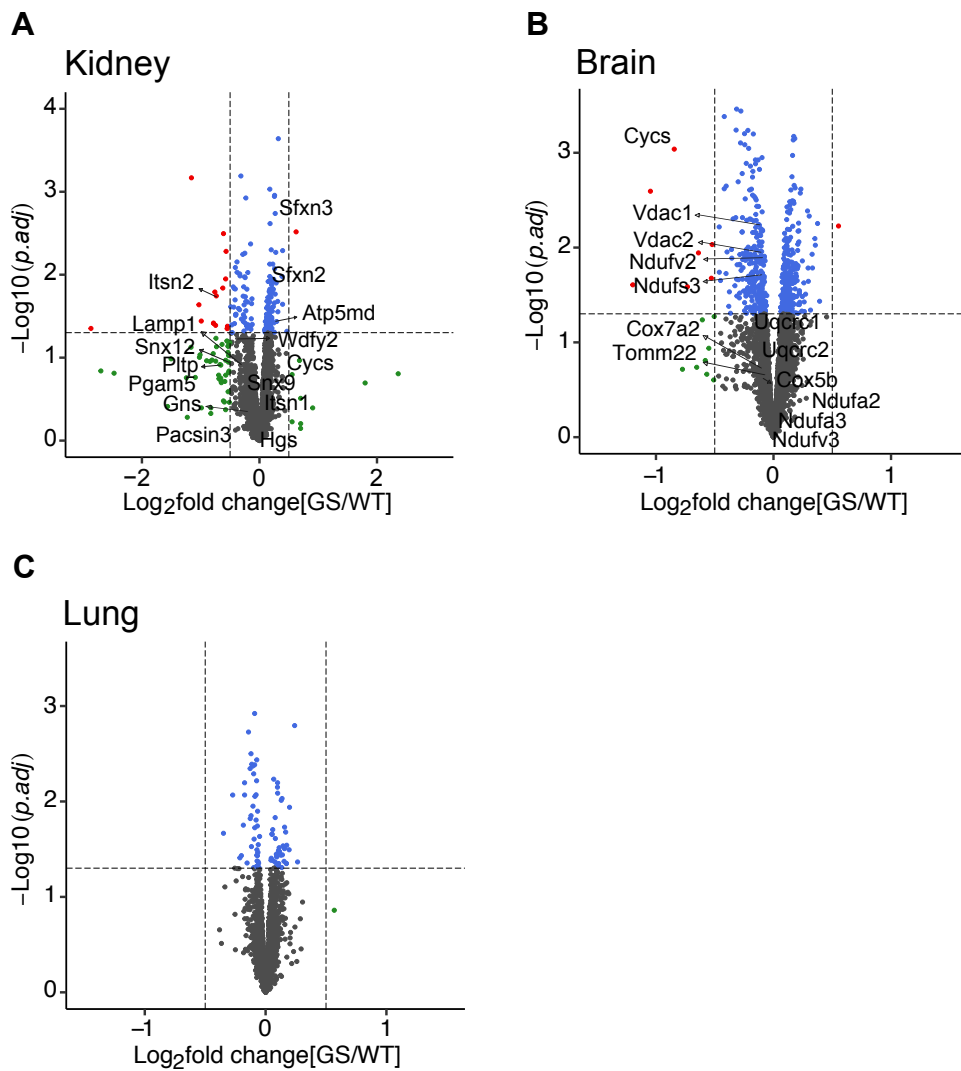


Figure S5

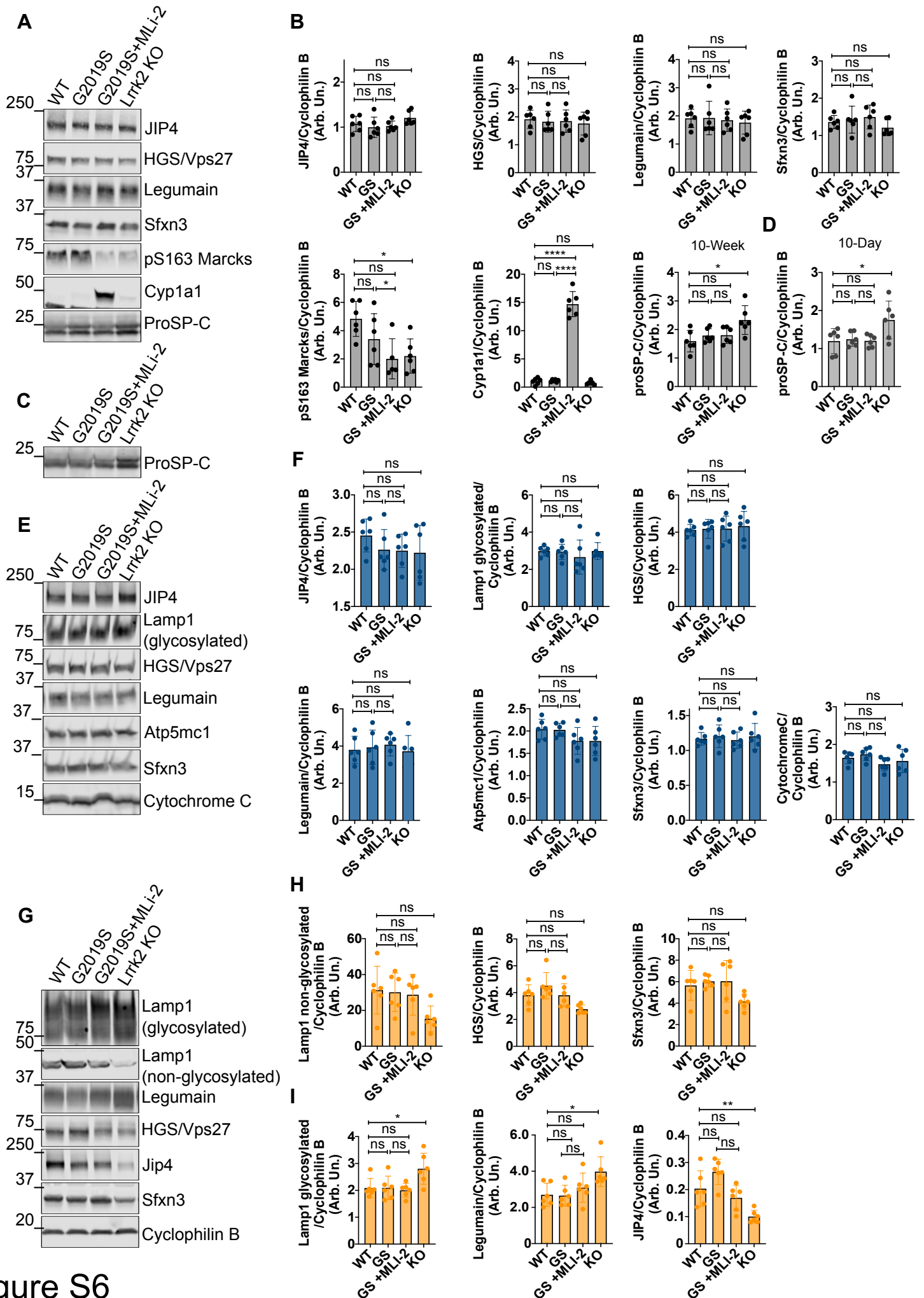
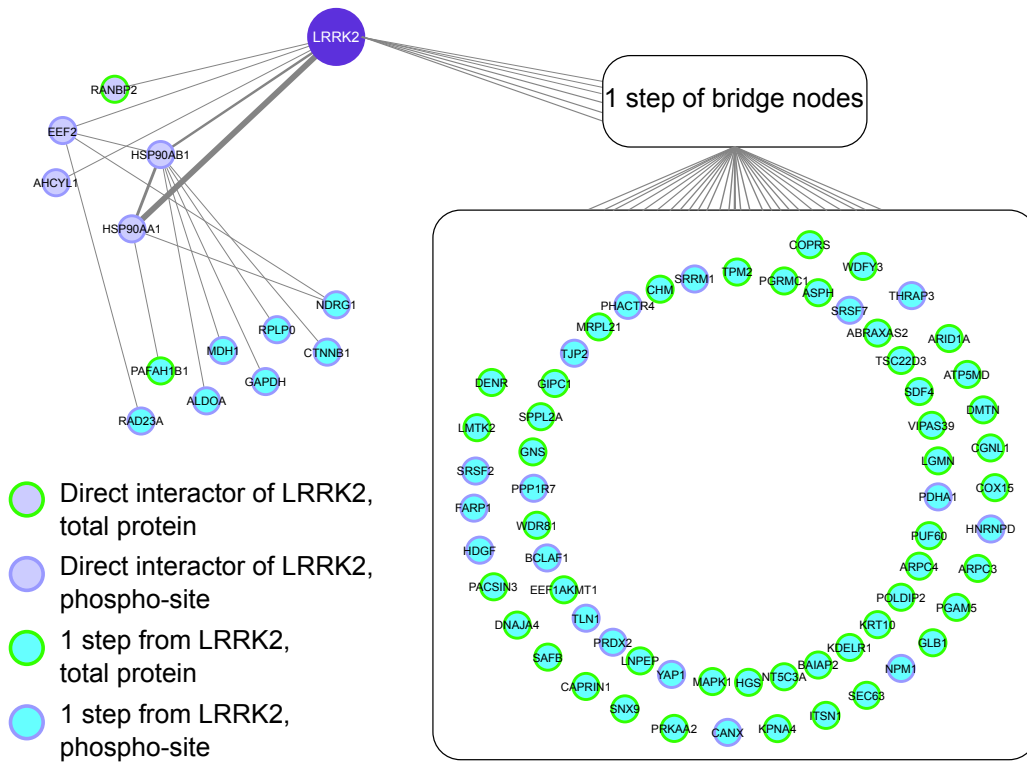


Figure S6

**A**



**B**

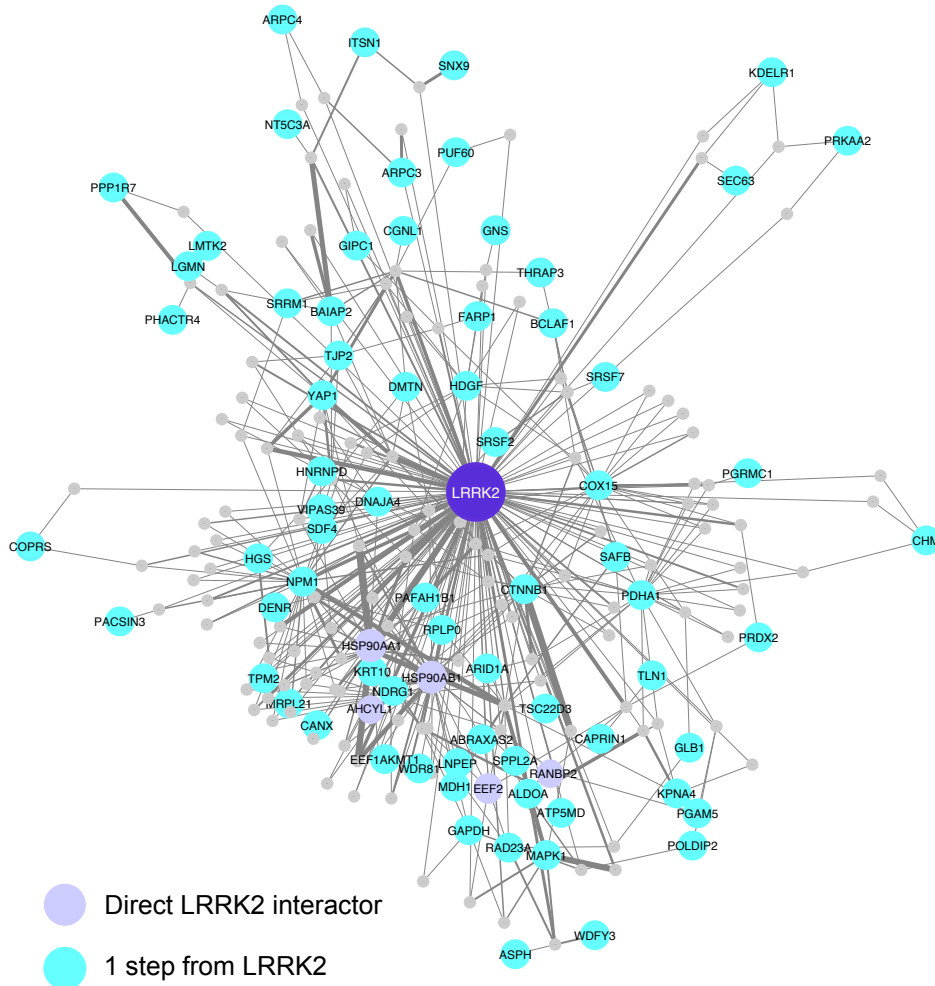


Figure S7