

Evidence for a causal association between milk intake and cardiometabolic disease outcomes using a two-sample Mendelian Randomization analysis in up to 1,904,220 individuals

Article

Published Version

Creative Commons: Attribution 4.0 (CC-BY)

Open Access

Vimalleswaran, K. S. ORCID: <https://orcid.org/0000-0002-8485-8930>, Zhou, A., Cavadina, A. and Hyppönen, E. (2021) Evidence for a causal association between milk intake and cardiometabolic disease outcomes using a two-sample Mendelian Randomization analysis in up to 1,904,220 individuals. *International Journal of Obesity*, 45. pp. 1751-1762. ISSN 1476-5497 doi: <https://doi.org/10.1038/s41366-021-00841-2> Available at <https://centaur.reading.ac.uk/97959/>

It is advisable to refer to the publisher's version if you intend to cite from the work. See [Guidance on citing](#).

To link to this article DOI: <http://dx.doi.org/10.1038/s41366-021-00841-2>

Publisher: Nature Publishing Group

All outputs in CentAUR are protected by Intellectual Property Rights law, including copyright law. Copyright and IPR is retained by the creators or other copyright holders. Terms and conditions for use of this material are defined in

the [End User Agreement](#).

www.reading.ac.uk/centaur

CentAUR

Central Archive at the University of Reading

Reading's research outputs online



Evidence for a causal association between milk intake and cardiometabolic disease outcomes using a two-sample Mendelian Randomization analysis in up to 1,904,220 individuals

Karani Santhanakrishnan Vimalaswaran^{1,2,3} · Ang Zhou⁴ · Alana Cavadino⁵ · Elina Hyppönen^{2,4,6}

Received: 14 August 2020 / Revised: 8 April 2021 / Accepted: 26 April 2021
© The Author(s) 2021. This article is published with open access

Abstract

Background High milk intake has been associated with cardio-metabolic risk. We conducted a Mendelian Randomization (MR) study to obtain evidence for the causal relationship between milk consumption and cardio-metabolic traits using the lactase persistence (*LCT*-13910 C > T, rs4988235) variant as an instrumental variable.

Methods We tested the association of *LCT* genotype with milk consumption (for validation) and with cardio-metabolic traits (for a possible causal association) in a meta-analysis of the data from three large-scale population-based studies (1958 British Birth Cohort, Health and Retirement study, and UK Biobank) with up to 417,236 participants and using summary statistics from consortia meta-analyses on intermediate traits ($N = 123,665\text{--}697,307$) and extended to cover disease endpoints ($N = 86,995\text{--}149,821$).

Results In the UK Biobank, carriers of ‘T’ allele of *LCT* variant were more likely to consume milk ($P = 7.02 \times 10^{-14}$). In meta-analysis including UK Biobank, the 1958BC, the HRS, and consortia-based studies, under an additive model, ‘T’ allele was associated with higher body mass index (BMI) ($P_{\text{meta-analysis}} = 4.68 \times 10^{-12}$) and lower total cholesterol (TC) ($P = 2.40 \times 10^{-36}$), low-density lipoprotein cholesterol (LDL-C) ($P = 2.08 \times 10^{-26}$) and high-density lipoprotein cholesterol (HDL-C) ($P = 9.40 \times 10^{-13}$). In consortia meta-analyses, ‘T’ allele was associated with a lower risk of coronary artery disease (OR:0.86, 95% CI:0.75–0.99) but not with type 2 diabetes (OR:1.06, 95% CI:0.97–1.16). Furthermore, the two-sample MR analysis showed a causal association between genetically instrumented milk intake and higher BMI ($P = 3.60 \times 10^{-5}$) and body fat (total body fat, leg fat, arm fat and trunk fat; $P < 1.37 \times 10^{-6}$) and lower LDL-C ($P = 3.60 \times 10^{-6}$), TC ($P = 1.90 \times 10^{-6}$) and HDL-C ($P = 3.00 \times 10^{-5}$).

Conclusions Our large-scale MR study provides genetic evidence for the association of milk consumption with higher BMI but lower serum cholesterol levels. These data suggest no need to limit milk intakes with respect to cardiovascular disease risk, with the suggested benefits requiring confirmation in further studies.

Supplementary information The online version contains supplementary material available at <https://doi.org/10.1038/s41366-021-00841-2>.

✉ Elina Hyppönen
elina.hypponen@unisa.edu.au

¹ Hugh Sinclair Unit of Human Nutrition, University of Reading, Reading, UK

² Population, Policy and Practice, UCL Institute of Child Health, London, UK

³ Institute for Food, Nutrition, and Health, University of Reading, Reading, UK

Background

Obesity, hypertension, dyslipidaemias and hyperglycaemia are all strong contributors’ to cardio-metabolic diseases, which are the major causes of morbidity and mortality worldwide [1–3]. Diet is a major determinant of cardio-metabolic diseases [4] and several studies have

⁴ Australian Centre for Precision Health, Unit of Clinical and Health Sciences, University of South Australia, Adelaide, SA, Australia

⁵ Section of Epidemiology and Biostatistics, School of Population Health, University of Auckland, Auckland, New Zealand

⁶ South Australian Health and Medical Research Institute, Adelaide, SA, Australia

shown associations between dairy and milk consumption and cardio-metabolic risk factors [5–10]. High fat dairy products can lead to adverse effects on cardiovascular risk by increasing the intake of saturated fat and cholesterol which have been shown to increase blood cholesterol and subsequent risk of cardiovascular diseases (CVDs) [11, 12]. In addition, milk is a major source of calcium and a risk factor for arterial calcification [13]. Despite these proposed adverse effects, a reduced risk of CVDs was reported for consumption of milk and low-fat dairy products in large scale meta-analysis of data from nine studies ($N = 57,256$) [8]. The findings from randomised controlled trials (RCTs) have been inconsistent [14], failing to provide causal evidence either for a beneficial or adverse causal association.

The lactase enzyme, which is responsible for the digestion of milk sugar lactose, is encoded by the lactase (*LCT*) gene. A functional single nucleotide polymorphism (SNP), –13910 C/T (rs4988235), located upstream of the *LCT* gene, has been shown to affect the transcription of the enzyme and control the distribution of lactase phenotypes in human populations. The ‘T’ allele of the SNP rs4988235 is associated with lactase persistence (LP) and has been shown to increase the *LCT* gene promoter activity after binding transcription factors [15]. Given the functional impact of this SNP on the digestion of milk sugar lactose, the SNP rs4988235 has been used as proxy for milk intake in Mendelian randomization (MR) studies that examined the relationship between milk intake and diseases [16–18].

Recent studies have demonstrated a causal relationship between higher dairy intake and higher body mass index (BMI) [19, 20] but not CVD-related outcomes [21]. Given the discrepancies, we set out to comprehensively examine the causal association between milk consumption and CVD, Type 2 Diabetes (T2D) and cardio-metabolic risk factors, including measures of adiposity, blood pressure, and markers of chronic inflammation, lipid and glucose metabolism. Our MR study included meta-analysis of the data in up to 417,236 individuals from three large population-based studies [22–24], and summary statistics data from several large consortia meta-analyses (N up to 1,486,984) [25–29].

Methods

Study populations

The full details of the three study populations [the 1958 British Birth cohort (1958BC), Health Retirement Study (HRS) and UK Biobank] are included in the Supplementary file. Briefly, for the present study, we have included up to 5672 individuals from the 1958BC, 8520 participants from the HRS and 404,648 individuals from UK Biobank.

Biomarker information and disease classification

Details on anthropometric data and biomarkers available from each of the studies are provided in Supplementary Table 1 and laboratory procedures are detailed in Supplementary methods. For the HRS, details of biomarkers are provided in the HRS documentation (<http://hrsonline.isr.umich.edu/modules/meta/bio2008/desc/Biomarker2006and2008.pdf>). For the UK Biobank, details of anthropometric and biochemical parameters can be found in the following links: <https://biobank.ndph.ox.ac.uk/ukb/ukb/docs/Anthropometry.pdf> and <https://biobank.ndph.ox.ac.uk/showcase/refer.cgi?id=1227>, respectively. In the UK Biobank, T2D cases were identified using the relevant first occurrence data fields (Supplementary file), which were generated by combining information from primary care data, hospital inpatient data, mortality data and self-reported medical conditions reported at the baseline or follow-ups. CVD events were ascertained from the hospital inpatient data and mortality data, and were identified using ICD codes (Supplementary file).

Milk intake

Information on milk intake was available from the 1958BC and the UK Biobank. For the 1958BC, milk intake variable was derived from the 45 years biomedical survey and based on the question “how often do you drink milk alone or in milky drinks”. In the UK Biobank, milk intake was derived from a question “What type of milk do you mainly use?” included in the touchscreen questionnaire (<http://biobank.ctsu.ox.ac.uk/crystal/refer.cgi?id=100312>).

Genotyping and SNP selection

SNP rs4988235 was genotyped in all three cohorts. For 1958BC, this SNP was derived from genome-wide association study (GWAS) data ($N = 2500$ from Illumina Infinium 550 K chip, $N = 3000$ from Affymetrix 6.0 platform). For HRS, the DNA samples were genotyped at the Center for Inherited Disease Research using the Illumina HumanOmni2.5-4v1 array and using the calling algorithm GenomeStudio version 2011.2, Genotyping Module 1.9.4 and GenTrain version 1.0. For the UK Biobank, samples were genotyped at the Affymetrix Research Services Laboratory in Santa Clara, California, USA. Axiom Array plates were processed on the Affymetrix GeneTitan® Multi-Channel (MC) Instrument. Further details of DNA analysis can be found in the Supplementary file.

Consortia-based studies

We have also used the summary statistics from other consortia-based studies for the meta-analysis. We used

GIANT [25] (N up to 327,665) for BMI, waist-to-hip ratio, and height; Global Lipids [26] (N up to 188,577) for lipid-related traits; MAGIC [27] (N up to 22,293) for diabetes-related traits; ICBP [29] ($N = 697,307$) for systolic and diastolic blood pressures, respectively; DIAGRAM [30] ($N = 34,840$ cases and 114,981 controls) for T2D; CARDIOGRAM [31] ($N = 22,233$ cases and 64,762 controls) for coronary artery disease (CAD); and EPIC-InterAct [32] ($N = 12,722$) for estimates of the *LCT* variant-milk intake association.

Statistical analysis

Systolic (SBP) and diastolic (DBP) blood pressures were calculated by averaging 2 BP measurements, and for individuals taking BP-lowering medication in the 1958BC, HRS and the UK Biobank, we adjusted for the medication use by adding 15 and 10 mm Hg to SBP and DBP, respectively [28]. Pulse pressure (PP) was calculated as SBP minus DBP. For participants on lipid-lowering medication, we adjusted for their medication use by dividing their biomarker concentrations by a biomarker-specific correction factor (0.68 for LDL-C, 1.05 for HDL-C, 0.75 for total cholesterol, 0.87 for triglycerides, 1.21 for CRP, and 1.04 for HbA1c), which was obtained from the UK Biobank [33]. In the analysis related to HbA1c, we have also adjusted for anti-diabetic medication use in the regression model. The primary data analyses in 417,236 individuals assumed an additive genetic model to be consistent with look-up results from consortia-based studies. However, we had also analysed the data under a recessive model, with participants bearing ‘CT’ and ‘TT’ combined and ‘CC’ homozygotes as the reference, wherever appropriate. Chi-square test was used to assess whether the genotype frequencies were in Hardy-Weinberg Equilibrium (1958BC, $P = 0.522$; HRS, $P < 0.0001$; UK Biobank, $P = 0.088$). The genetic associations with the continuous outcomes were examined using linear regression, with models adjusted for gender, BMI, assessment centre, SNP array and region of residence (1958BC) or principal components (HRS and UK Biobank) to account for population stratification. All cardiometabolic traits [except SBP, DBP and glycated haemoglobin (HbA1c)] were inverse-normal-transformed to be consistent with the look-up results from consortia. The data from the 1958BC, HRS, the UK Biobank and consortia were meta-analysed using the random effects meta-analysis where estimates were available for at least two studies (Supplementary Table 1). To quantify the causal effects of milk intake, estimates of *LCT*-cardio-metabolic-traits associations from the meta-analysis were taken forward for the MR analysis, where the causal effect was estimated using the instrumental variable ratio method, with the estimate of *LCT*-milk intake association taken from the EPIC-interAct

study [32]. For the instrument validation analysis, the *LCT* gene variant was tested for its association with age, sex, social or lifestyle factors such as annual income, education, health status, smoking and alcohol and coffee consumption (P value < 0.00625 , Bonferroni corrected threshold considered statistically significant). We conducted all analyses using STATA, version 14.1 (StataCorp LP, College Station, Texas, USA), with MR analyses performed using the `mrratio` command in the `mrr` package [34].

To increase the statistical power, we used summary statistics from consortia-based studies to meta-analyze with the data from the three population-based studies. Results from consortia meta-analyses were publicly available, and in the GIANT [25], Global Lipids [26], MAGIC [27], ICBP [29], DIAGRAM [30] and CARDIOGRAM [31], each study had performed the association analyses assuming an additive genetic model.

Results

Association of the *LCT* gene variant with milk intake

Table 1 shows the frequency of milk consumption stratified based on gender, BMI and *LCT* gene variant. The odds of consuming milk was higher for the ‘T’ allele carriers of the *LCT* variant (SNP rs4988235) compared to the CC homozygotes (OR: 2.14, 95% CI: 1.57–2.93, $P = 1.68 \times 10^{-6}$ for the 1958BC; OR 1.21, 95% CI: 1.09–1.34, $P = 3.0 \times 10^{-4}$ for the UK Biobank). In the UK biobank, 1.83% of ‘TT’ carriers followed a lactose free diet compared to 1.77% and 2.40% in CT and CC carriers, respectively ($P = 7.6 \times 10^{-5}$). The observed patterns of milk consumption varied strongly by age, sex, social or lifestyle factors such as annual income, education, health status, smoking and alcohol and coffee consumption, while no notable imbalances were observed by *LCT* genotype (Supplementary Table 2). Furthermore, check against the GWAS catalogue (<https://www.ebi.ac.uk/gwas/>), confirmed the association between *LCT* rs4988235 and BMI ($P = 2 \times 10^{-6}$) [25], with no other pleiotropic associations reported.

Phenotypic associations

In the 1958BC, there was no significant association between high milk intake and cardiometabolic traits ($P > 0.09$) (Table 2). In the UK Biobank, there was an association of high milk intake with higher BMI ($P = 3.72 \times 10^{-124}$), SBP ($P = 1.06 \times 10^{-6}$), DBP ($P = 0.009$), low-density lipoprotein cholesterol (LDL-C) ($P = 1.20 \times 10^{-19}$), TC ($P = 2.75 \times 10^{-12}$), triglycerides ($P = 8.33 \times 10^{-19}$), and C-reactive protein (CRP) ($P = 2.90 \times 10^{-35}$) and lower HDL-C ($P = 8.31 \times 10^{-6}$) and HbA1c ($P = 7.96 \times 10^{-14}$).

Table 1 Frequency of milk consumption stratified based on gender, body mass index (BMI) and gene variant.

	1958 British Birth Cohort			UK Biobank			EPIC InterAct	
	Never drinkers (<i>N</i> = 1701)	Infrequent/daily drinkers (<i>N</i> = 3742)	<i>P</i> value	Non-dairy consumers (<i>N</i> = 31,731)	Milk drinkers (<i>N</i> = 374,202)	<i>P</i> value	Milk intake (g/day) ^a (<i>N</i> = 12,722)	<i>P</i> value
Gender								
Men	846 (28.66%)	2106 (71.34%)		11,519 (6.17 %)	175,071 (93.83 %)		–	–
Women	855 (34.32%)	1636 (65.68%)	7.05 × 10 ⁻⁰⁶	20,212 (9.21 %)	199,131 (90.79 %)	2.023 × 10 ⁻²⁸³	–	–
BMI								
Underweight	10 (37.04%)	17 (62.96%)		307 (15.16 %)	1718 (84.84 %)		–	–
Normal	571 (31.67%)	1232 (68.33%)		12,550 (9.54 %)	119,030 (90.46 %)		–	–
Overweight	702 (30.54%)	1597 (69.46%)		12,129 (7.01 %)	160,852 (92.99 %)		–	–
Obese	416 (31.78%)	893 (68.22%)	0.732	6612 (6.74 %)	91,450 (93.26 %)	9.073 × 10 ⁻²¹⁸	–	–
<i>LCT</i> gene variant (additive model)								
TT	917 (30.29%)	2110 (69.71%)		17,287 (7.67 %)	207,963 (92.33 %)		188 (48–373)	
CT	657 (31.99%)	1397(68.01%)		11,108 (7.81 %)	131,163 (92.19 %)		160 (36–299)	
CC	127 (35.18%)	234 (64.82%)	0.111	2090 (9.12 %)	20,820 (90.88 %)	7.02 × 10 ⁻¹⁴	146 (19–225)	2.00 × 10 ⁻⁷
<i>LCT</i> gene variant (recessive model)								
TT + CT	1574 (30.98%)	3507 (69.02%)		28,395 (7.73 %)	339,126 (92.27 %)		–	
CC	127 (35.18%)	234 (64.82%)	0.096	2090 (9.12 %)	20,820 (90.88 %)	2.104 × 10 ⁻¹⁴	–	–

^aData are expressed as median (quartile 1–quartile 4).

Meta-analysis of the data from 1958BC and UK Biobank showed that there was an association of high milk intake with lower HDL-C ($P = 2.70 \times 10^{-6}$) and higher triglycerides ($P = 0.001$) and CRP ($P = 2.60 \times 10^{-30}$).

Association of the *LCT* gene variant with cardio-metabolic traits

The ‘T’ allele indexing greater milk intake had a consistent association with higher BMI in the UK Biobank ($P = 2.73 \times 10^{-7}$), GIANT consortium ($P = 0.001$), and the meta-analysis ($P_{\text{meta-analysis}} = 4.68 \times 10^{-12}$) (Table 2). In contrast, *LCT* genotype was not associated with BMI adjusted waist circumference (WC) (indicator for central adiposity, $P_{\text{meta-analysis}} = 0.49$).

All individual studies with available data showed an inverse association between *LCT* genotype indexing greater milk intake and lower serum LDL-C ($P_{\text{meta-analysis}} = 2.08 \times 10^{-26}$), HDL-C ($P_{\text{meta-analysis}} = 9.40 \times 10^{-13}$), and total cholesterol concentrations ($P_{\text{meta-analysis}} = 2.38 \times 10^{-36}$)

(Table 2). None of the genetic associations between the ‘T’ allele indexing higher milk intakes and SBP, DBP, and HbA1c were statistically significant ($P_{\text{meta-analysis}} > 0.11$). Information for CRP was only available for the 1958BC and UK Biobank ($P_{\text{meta-analysis}} = 0.49$).

Analyses in the UK Biobank confirmed the association between *LCT* variant and a higher total body fat percentage ($P = 1.63 \times 10^{-7}$), with a consistent association with higher fat-% noted across all indicators of regional fat distribution (Table 3). The estimates from these genetic associations were used in the IV ratio analysis, which confirmed the causal association of high milk intake with higher total body fat ($P = 2.40 \times 10^{-4}$), leg fat ($P = 2.59 \times 10^{-4}$), arm fat ($P = 4.27 \times 10^{-4}$) and trunk fat ($P = 3.01 \times 10^{-4}$).

In the UK Biobank, there was an association of the ‘T’ allele with T2D ($P = 0.007$), where ‘T’ allele carriers had 11% lower risk of diabetes; but the associations of *LCT* variant with CVD was not statistically significant ($P = 0.302$) (Table 4). However, in consortia look-up, there was no evidence for the association of *LCT* variant with T2D in the DIAGRAM

Table 2 Phenotypic and Genetic associations between milk intake and cardio-metabolic traits.

	The UK Biobank			1958BC			HRS			Consortia			Meta-analysis ^a			Heterogeneity			Weight			
	Beta ± SE (N)	P value	P value	Beta ± SE (N)	P value	P value	Beta ± SE (N)	P value	P value	Beta ± SE (N)	P value	P value	Beta ± SE ^b	P value	I ² (%)	UK Biobank	1958BC	HRS	Consortia	HRS	Consortia	
BMI																						
Phenotypic	0.146 ± 0.006 (N = 404,648)	3.72E-124	0.61	NA	NA	NA	NA	NA	NA	NA	NA	NA	0.068 ± 0.08	0.40	5.60E-08	96.6	48.45	51.55	48.45	48.45	-	-
Genetic	0.014 ± 0.003 (N = 375,247)	2.73E-07	0.98	-0.008 ± 0.018 (N = 8445)	0.65	0.021 (N = 5672)	0.016 ± 0.003 (N = 311,359)	4.60E-06	0.64	4.68E-12	0	61.6	0.015 ± 0.002	4.68E-12	0	-	-	61.6	61.6	-	38.4	38.4
WC (adjusted for BMI)																						
Phenotypic	-0.000003 ± 0.0004 (N = 404,571)	1.00	0.44	NA	NA	NA	NA	NA	NA	NA	NA	NA	-0.0007 ± 0.0004	0.88	0.45	0	4.01	95.99	4.01	4.01	-	-
Genetic	-0.001 ± 0.002 (N = 375,174)	0.51	0.42	0.011 ± 0.02 (N = 4684)	0.59	0.015 (N = 5656)	0.01 ± 0.004 (N = 223,634)	0.007	0.49	0.007	86.2	53.81	0.004 ± 0.006	0.49	0.007	86.2	-	53.81	53.81	-	46.19	46.19
SBP (mmHg)																						
Phenotypic	0.56 ± 0.11 (N = 369,133)	1.06E-06	0.38	NA	NA	NA	NA	NA	NA	NA	NA	NA	0.18 ± 0.47	0.69	0.04	76.4	39.65	60.35	39.65	-	-	-
Genetic	-0.0058 ± 0.0052 (N = 342,729)	0.91	0.40	0.26 ± 0.66 (N = 4694)	0.70	0.28 ± 0.33 (N = 5654)	0.008 ± 0.036 ^c (N = 697,305)	0.83	0.81	0.71	0	0.29	0.0085 ± 0.035	0.81	0.71	0	0.29	99.71	99.71	0.29	99.71	99.71
DBP (mmHg)																						
Phenotypic	0.17 ± 0.064 (N = 369,142)	9.29E-03	0.14	NA	NA	NA	NA	NA	NA	NA	NA	NA	-0.071 ± 0.30	0.81	0.05	74.9	38.52	61.48	38.52	-	-	-
Genetic	0.040 ± 0.029 (N = 342,737)	0.17	0.42	0.29 ± 0.39 (N = 4694)	0.47	0.18 ± 0.22 (N = 5654)	0.025 ± 0.021 ^c (N = 697,307)	0.23	0.21	0.51	0	0.28	0.026 ± 0.021	0.21	0.51	0	0.28	99.72	99.72	0.28	99.72	99.72
HDL-C																						
Phenotypic	-0.024 ± 0.005 (N = 352,898)	8.31E-06	0.09	NA	NA	NA	NA	NA	NA	NA	NA	NA	-0.025 ± 0.005	2.70E-06	0.37	0	3.2	96.8	3.2	-	-	-
Genetic	-0.015 ± 0.002 (N = 327,286)	3.01E-10	0.09	0.013 ± 0.029 (N = 3553)	0.66	0.022 (N = 5563)	-0.014 ± 0.004 (N = 183,570)	0.001	0.09	0.59	0	0.5	-0.015 ± 0.002	9.40E-13	0.59	0	0.5	28.12	28.12	0.5	28.12	28.12
LDL-C																						
Phenotypic	0.055 ± 0.006 (N = 384,881)	1.20E-19	0.13	NA	NA	NA	NA	NA	NA	NA	NA	NA	0.009 ± 0.050	0.86	0.0009	90.85	54.21	54.21	54.21	-	-	-
Genetic	-0.023 ± 0.003 (N = 356,937)	5.25E-17	0.17	NA	NA	NA	-0.028 ± 0.004 (N = 169,531)	3.20E-11	0.17	0.32	0	70.38	-0.024 ± 0.002	2.08E-26	0.32	0	-	70.38	70.38	-	29.62	29.62
TC																						
Phenotypic	0.042 ± 0.006 (N = 385,586)	2.76E-12	0.06	NA	NA	NA	NA	NA	NA	NA	NA	NA	-0.002 ± 0.048	0.96	0.001	90.67	54.28	54.28	54.28	-	-	-

Table 2 (continued)

	The UK Biobank		1958BC		HRS		Consortia		Meta-analysis ^a		Heterogeneity		Weight			
	Beta ± SE (N)	P value	Beta ± SE (N)	P value	Beta ± SE (N)	P value	Beta ± SE (N)	P value	Beta ± SE ^b	P value	P value	I ² (%)	UK Biobank	1958BC	HRS	Consortia
Genetic	-0.027 ± 0.003 (N = 357,601)	8.77E-24	-0.055 ± 0.021 (N = 5570)	0.009	0.003 ± 0.026 (N = 4228)	0.92	-0.031 ± 0.004 (N = 183,761)	4.00E-14	-0.028 ± 0.002	2.40E-36	0.38	0	67.99	-	0.72	31.3
Triglycerides																
Phenotypic	0.049 ± 0.006 (N = 385,287)	8.30E-19	0.016 ± 0.026 (N = 5330)	0.53	NA	NA	NA	NA	0.043 ± 0.013	0.001	0.22	34.36	79.98	20.02	-	-
Genetic	0.001 ± 0.003 (N = 357,317)	0.56	-0.051 ± 0.019 (N = 5559)	0.008	NA	NA	-0.003 ± 0.004 (N = 174,267)	0.49	0.00007 ± 0.002	0.97	0.32	0.87	69.22	-	-	30.78
HbA1c (%)																
Phenotypic	0.020 ± 0.003 (N = 385,644)	7.96E-14	0.006 ± 0.015 (N = 5339)	0.68	NA	NA	NA	NA	0.019 ± 0.003	1.10E-13	0.38	0	97.04	2.96	-	-
Genetic	-0.002 ± 0.001 (N = 357,767)	0.18	-0.002 ± 0.011 (N = 5568)	0.82	0.011 ± 0.017 (N = 4408)	0.54	-0.0001 ± 0.002 (N = 123,665)	0.96	-0.001 ± 0.001	0.27	0.61	0	67.66	-	0.38	31.95
CRP																
Phenotypic	0.069 ± 0.006 (N = 384,759)	2.90E-35	0.042 ± 0.027 (N = 5276)	0.11	NA	NA	NA	NA	0.068 ± 0.006	2.60E-30	0.31	1.56	95.04	4.96	-	-
Genetic	0.002 ± 0.003 (N = 356,829)	0.53	0.03 ± 0.02 (N = 5503)	0.13	0.003 ± 0.027 (N = 4246)	0.91	NA	NA	0.002 ± 0.002	0.42	0.37	0	97.55	1.6	0.85	-

NA not available, 1958BC 1958 British Birth Cohort, HRS the Health and Retirement study, BMI body mass index, WC waist circumference, SBP systolic blood pressure, DBP diastolic blood pressure, CRP C-reactive protein, HDL-C high density lipoprotein cholesterol, LDL-C low density lipoprotein cholesterol, TC total cholesterol.

^aRandom effects meta-analysis of the data from UK Biobank, the 1958BC, the HRS, and consortia-based studies was performed (after excluding the overlapping studies); Meta-analyses for BMI and WC have excluded 1958BC and HRS; meta-analyses for SBP and DBP have excluded 1958BC and UK Biobank; meta-analyses for HDL, LDL-C, TC, Triglycerides and HbA1c have excluded 1958BC.

^bRandom effect model was used for all meta-analyses.

^cResults for the LCT variant were not available, therefore its proxy rs6754311 ($r^2 = 1$ among British in England and Scotland) was used.

Table 3 Milk intake and body fat distribution in the UK Biobank.

	<i>N</i>	Beta ± SE	<i>P</i> value
Total body fat			
Phenotypic	398,654	0.086 ± 0.005	8.38E-76
Genetic	369,696	0.011 ± 0.002	1.63E-07
IV ratio (per 50 g milk intake)	369,696	0.031 ± 0.009	2.40E-04
Leg fat			
Phenotypic	398,853	0.078 ± 0.004	1.59E-95
Genetic	369,879	0.009 ± 0.002	2.18E-07
IV ratio (per 50 g milk intake)	369,879	0.025 ± 0.007	2.59E-04
Arm fat			
Phenotypic	398,799	0.084 ± 0.005	1.46E-71
Genetic	369,834	0.010 ± 0.002	1.37E-06
IV ratio (per 50 g milk intake)	369,834	0.029 ± 0.008	4.27E-04
Trunk fat			
Phenotypic	398,639	0.095 ± 0.006	1.67E-64
Genetic	369,683	0.012 ± 0.002	3.92E-07
IV ratio (per 50 g milk intake)	369,683	0.036 ± 0.01	3.01E-04

Table 4 Association of milk intake with cardiovascular diseases and type 2 diabetes.

Phenotypes	<i>N</i> _{cases} / <i>N</i> _{controls}	OR ^a	95% CI	<i>P</i> value
DIAGRAM				
Type 2 diabetes	34,840/ 114,981	1.06	0.97–1.16	0.201
CARDIoGRAM				
Coronary artery disease	22,233/64,762	0.86	0.75–0.99	0.030
UK Biobank				
Type 2 diabetes	20,820/ 351,375	0.89	0.82–0.97	0.007
Cardiovascular disease	42,317/ 332,930	0.97	0.92–1.03	0.302

CARDIoGRAM Coronary ARtery DIsease Genome-wide Replication and Meta-analysis, DIAGRAM DIAbetes Genetics Replication And Meta-analysis, OR odds ratio, CI confidence intervals.

^aEffects are presented as odds ratios and 95% confidence intervals, per 50 g milk intake.

consortium ($P = 0.201$) but there was an association with CAD in the CARDIoGRAM consortium ($P = 0.030$), where ‘T’ allele carriers had 14% lower risk of CAD.

Using the estimates taken from the results of meta-analysis in Table 2 and estimates of the *LCT* variant-milk intake association from the EPIC-interAct study (<https://care.diabetesjournals.org/content/42/4/568.long>), [32] the MR analysis confirmed the causal association of the genetically instrumented high milk intake with higher BMI ($P = 3.60 \times 10^{-5}$) and lower LDL-C ($P = 3.60 \times 10^{-6}$), total cholesterol ($P = 1.90 \times 10^{-6}$) and HDL-C ($P = 3.00 \times 10^{-5}$) (Fig. 1).

Discussion

Our large-scale meta-analysis in up to 1,904,220 participants demonstrates that ‘T’ allele of the *LCT* SNP rs4988235 indexing greater milk intake is significantly associated with CVD-related risk factors such as higher BMI and lower TC and LDL-C concentrations. Furthermore, using a two-sample MR analysis, we confirmed the causality between genetically instrumented high milk intake and higher BMI and lower LDL-C, total cholesterol and HDL-C. In summary, our MR study represents an extensive exploration of the *LCT* gene variant for associations with milk intake and cardio-metabolic traits which is strengthened by the use of large datasets and consortia-based studies. Given the existing controversies between high milk intake and CVD risk, our MR analysis will have significant public health implications.

As an exposure, dairy milk is relatively complex, and in addition to calcium, dairy products constitute an important dietary source of protein and primarily saturated fat. Several intervention studies have investigated the association between dairy consumption and cardiovascular risk factors such as lipid outcomes [9, 35, 36]. However, most of the studies have been focused on comparing different types of milk (i.e. low fat vs. high fat), while there are only a few studies investigating the effects of milk per se. In addition, most of the studies were small with short duration and lacked adequate control groups, control of dietary composition and compliance measures. For instance, a crossover feeding study in eight men showed that the mean total and LDL-C were 7% and 11% lower, respectively, after 6 weeks consumption of a controlled low fat diet containing skim milk, compared to whole milk, suggesting that reducing milk fat consumption led to more favourable lipid profiles [9]. In addition, a few studies have also shown that skim milk appeared to have advantages on lowering cholesterol levels over whole milk or full cream milk [37, 38]; however, there was no effect on serum triglycerides [37]. On the other hand, studies that compared the effect of isoenergetic amounts of milk, cheese and butter on lipid outcomes showed that total cholesterol concentration was significantly lower after cheese than butter diet [35, 36]; however, a differential effect of fat in milk and butter was not confirmed [36]. In addition, a few prospective cohort studies have failed to show that higher intakes of milk and dairy products, regardless of milk fat levels, are associated with an increased risk of CVD-related outcomes. Hence, it is still not clear whether it is the fat content in dairy products that is contributing to the lower cholesterol levels or it is due to an unknown ‘milk factor’. Given the difficulties to assess the biological effects of dairy milk per se, we used the *LCT* gene variant (rs4988235) as an instrument to examine the causal association between milk intake and lipid outcomes, as genetic associations are less prone to confounding and free from reverse causation [39].

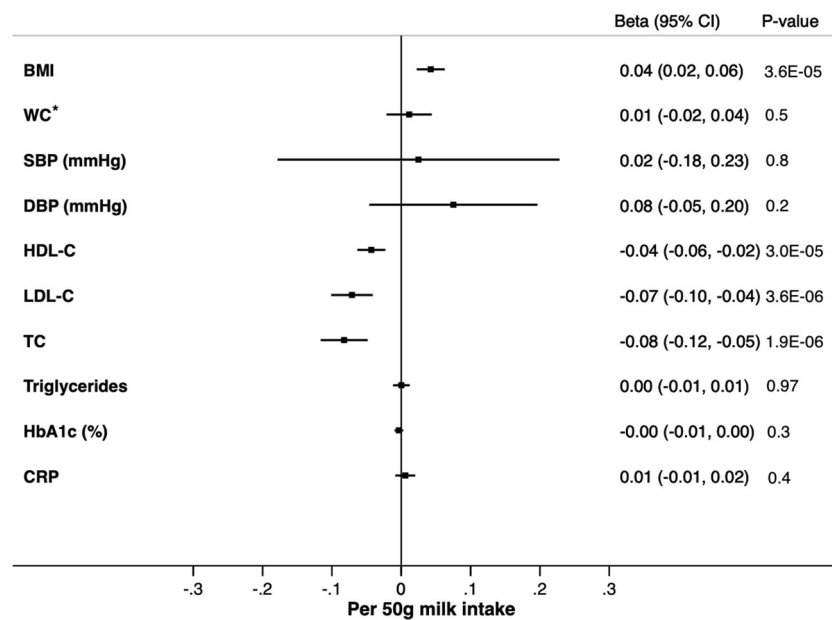


Fig. 1 Mendelian Randomization (MR) estimates for the association between milk intake and cardio-metabolic traits. Using the estimates taken from the results of meta-analysis in Table 2 and estimates of the *LCT* variant-milk intake association from the EPIC-interAct study, the MR analysis showed a causal association of the genetically instrumented high milk intake with higher BMI ($P = 3.60 \times 10^{-5}$) and lower LDL-C ($P = 3.60 \times 10^{-6}$), total cholesterol

($P = 1.90 \times 10^{-6}$) and HDL-C ($P = 3.00 \times 10^{-5}$). Differences are shown as SD increase in the outcome with the exception of SBP (mmHg), DBP (mmHg), and HbA1c (%). * WC adjusted for BMI. SD standard deviation, *BMI* body mass index, SBP systolic blood pressure, DBP diastolic blood pressure, HDL-C high density lipoprotein cholesterol, LDL-C low density lipoprotein cholesterol, HbA1c glycated haemoglobin, CRP C-reactive protein, CI confidence interval.

Our study using *LCT* gene variant as a genetic instrument confirmed the causal association between high milk consumption and lower TC and LDL-C in the combined meta-analysis. While the RCTs supplementing whole milk into the diet either lowered or failed to alter TC or LDL-C [37, 38, 40, 41], our large-scale study suggests an inverse association between high milk consumption and TC.

Some of the explanations for the lower cholesterol levels in response to high milk intake are as follows. Firstly, calcium and lactose in the milk have been shown to affect lipid metabolism where dietary lactose can affect lipaemia by enhancing calcium absorption and that the administration of a high amount of lactose results in decreased cholesterol content in humans [42]. Secondly, compared to other dairy products, milk is generally lower in fat and is also possible, that in order to increase their calcium intakes, individuals who are lactose intolerant tend to use more high fat dairy products such as cheese and many yogurts as these are generally better tolerated [43]. Thirdly, it is possible that dietary calcium intake may increase excretion of bile acids leading to the regeneration of bile acids from hepatic cholesterol and, eventually, resulting in the lowering of cholesterol concentrations [44]. Lastly, it could also be an outcome of gut microbial fermentation of indigestible carbohydrates, that are capable of altering cholesterol synthesis and disrupting enterohepatic circulation, thereby lowering cholesterol levels [45].

Several MR studies have been carried out examining the causal relationship between genetically instrumented milk intake and cardio-metabolic traits. While studies have shown associations of the *LCT* gene variant with obesity [46–49], abdominal obesity [50], diabetes [51], metabolic syndrome [46, 51] and their related traits such as BMI [46–49], WC [48], fat percentage [47] and fasting glucose [52] a few studies have failed to confirm these associations [16, 21, 50, 52, 53]. These inconsistencies could be because of the differences in the sample size, ethnicities, outcome measures and study design. To address some of these issues, we have used a large sample size ($N = 417,236$) from three population-based studies focussing on Caucasian populations from the UK and the US in a cross-sectional study design. In addition, we have used the summary statistics from consortia-based studies (N up to 1,077,312) and based our inferences on consistent association seen across the different large-scale studies included in our analyses. While the phenotypic associations showed a significant heterogeneity due to differences in the measurement of milk intake across the studies, there was no heterogeneity in the genetic associations, which suggests the significance of using MR studies to explore causal relationships.

The association between milk intake and BMI has been explored in several studies. The National Health and Nutrition Examination Survey (NHANES) in 1493 children (2–4 years) showed that milk had a more consistent positive association

with BMI than other dairy products [7]. This finding was confirmed in the Early Childhood Longitudinal Survey in 8950 children which also showed that higher milk consumption was associated with higher *z*-scores of BMI at 4 years of age [54]. In contrast, a longitudinal study in 19,352 Swedish women (40–55 years) showed that milk consumption was inversely associated with weight gain, where participants who consumed at least one serving of milk per day had an odds ratio of 0.85 (95% CI: 0.73, 0.99) [55]. Similarly, a study in 1001 adolescents also showed an inverse association between milk intake and BMI [56]. Despite large samples, the findings have been inconsistent. However, genetic studies including a meta-analysis have shown that the ‘T’ allele carriers of the SNP rs4988235 (LP genotype) had higher BMI [51, 57], which is in line with our findings in the GIANT consortium ($N = 327,665$) and combined meta-analysis ($N = 417,236$), where the ‘T’ allele carriers had 0.02 and 0.015 kg/m² higher BMI compared to the ‘CC’ homozygotes, respectively. Our study confirmed the causal association of the genetically instrumented milk intake with BMI and also body fat distribution (total body fat, leg fat, arm fat and trunk fat).

Despite some evidence from observational studies, and a smaller MR study [51] we did not find strong evidence for an association between milk intake and T2D or the regulation of long-term glucose metabolism indicated by HbA1c. A recent MR study in 21,820 European individuals has also failed to provide a genetic evidence for the association of milk intake with T2D [32]. Even though our study failed to show an association with T2D in the DIAGRAM consortium, we did find a significant association of the high milk intake ‘T’ allele with decreased T2D risk and lower HbA1c concentration in the UK Biobank cohort and with higher fasting insulin and HOMA-IR in the MAGIC consortium. These findings are in accordance with the study in 272 non-diabetic Caucasian women where those in the highest quartile of dairy consumption had higher HOMA-IR values than those in the lowest quartile [58]. In contrast, a prospective study in 2091 Chinese men and women showed that the dairy consumption was significantly associated with reduced risk of T2D [59]. In addition, a systematic review based on five studies that assessed the effect of dairy consumption on insulin sensitivity demonstrated that four studies showed a positive effect of dairy consumption on insulin sensitivity while one study failed to show any effect [60]. A recent study in 147,812 individuals from 21 countries has also shown higher intake of whole fat dairy was associated with lower incidence of diabetes [61]. These discrepancies could be because of the use of various dairy products rather than milk per se, small sample size and gender differences in sample selection. In contrast to our genetic associations, a study in 3575 Europeans failed to show an effect of the LP genotype with insulin level but showed an association with T2D [51]. Further large-scale meta-analyses

including a broader range of diabetes-related traits may help to overcome these discrepancies in genetic associations.

In accordance with several randomised trials [5, 62, 63], our MR study also did not provide any evidence for a causal effect of high milk intake on CRP, an inflammatory biomarker. However, a few human intervention studies have shown a significant effect of milk consumption on other inflammatory biomarkers. An RCT in 58 Korean adults with metabolic syndrome investigated the effects of low-fat milk consumption on inflammatory and atherogenic biomarkers and found favourable changes for blood pressure and atherogenic markers, such as sVCAM-1, sICAM-1 and endothelin-1, especially in those with hypertension or hypertriglyceridaemia [64]. Another intervention study in 42 smokers showed that non-supplemented milk (without fruit/vegetable extracts and vitamin C) significantly reduced inflammatory cytokines such as IL-6, IL-1beta and TNFA [65]. These favourable changes could be because the milk is rich in elements such as calcium, magnesium and potassium that help regulate blood pressure. In addition, casein and whey protein present in the milk are also considered as active biological peptides that inhibit angiotensin-I converting enzyme, an important factor in regulating blood pressure. Whether milk consumption exerts anti-inflammatory effects is presently questionable given the discrepancies in the findings from multiple studies and hence, further demonstration is required through well-designed and sufficiently powered studies.

One of the main strengths of our study is the large sample size. Besides using 1958BC ($N = 5672$), HRS ($N = 8520$) and the UK Biobank ($N = 404,648$), we have used the summary statistics from various consortia such as GIANT ($N = 327,665$), Global Lipids ($N = 188,577$), MAGIC ($N = 22,293$), ICBP (N up to 697,307), DIAGRAM ($N = 34,840$ cases and 114,981 controls) (T2D) and CARDIOGRAM (22,233 cases and 64,762 controls) to replicate our findings. Previous studies have shown conflicting findings regarding the association between high milk consumption and cardiometabolic traits due to unknown confounding factors. However, our study has used the *LCT* gene variant as an instrument, which is unlikely to be affected by confounding factors, to establish the causal association. The use of large samples from the discovery cohorts, various consortia and genetic instrument has enabled us to make firm conclusions on the causal association between milk intake and cardio-metabolic traits such as BMI, BP, CAD, and lipids. Some of the limitations of the study include the lack of available information on gastro-intestinal diseases of the study participants and the type of milk (skim or whole) and the differences in the measurement of milk intake variable.

In conclusion, our study confirms the causal association between genetically instrumented high milk consumption and cardio-metabolic phenotypes, where the ‘T’ allele was

associated with higher BMI and lower LDL-C and TC. Large intervention trials are needed to establish the causal link between high milk consumption and cardio-metabolic phenotypes before changes in dairy consumption could be recommended for the prevention of cardiometabolic traits.

Acknowledgements The British Heart Foundation funded the D-CarDia collaboration (grant PG/09/023), with further support from the National Health and Medical Council, Australia (grant 1123603). KSV was supported by the Rank Prize Funds Nutrition Committee Travel Award and by the Medical Research Council (MRC) grant (MR/S024778/1).

Author contributions EH conceived the study. KSV performed the literature search and wrote the first draft of the manuscript. AZ and AC performed the statistical analyses under the supervision of EH. EH and AZ had full access to the data. All authors contributed to data interpretation and revision of the manuscript.

Compliance with ethical standards

Conflict of interest The authors declare no competing interests.

Publisher's note Springer Nature remains neutral with regard to jurisdictional claims in published maps and institutional affiliations.

Open Access This article is licensed under a Creative Commons Attribution 4.0 International License, which permits use, sharing, adaptation, distribution and reproduction in any medium or format, as long as you give appropriate credit to the original author(s) and the source, provide a link to the Creative Commons license, and indicate if changes were made. The images or other third party material in this article are included in the article's Creative Commons license, unless indicated otherwise in a credit line to the material. If material is not included in the article's Creative Commons license and your intended use is not permitted by statutory regulation or exceeds the permitted use, you will need to obtain permission directly from the copyright holder. To view a copy of this license, visit <http://creativecommons.org/licenses/by/4.0/>.

References

- Di Bonito P, Sanguigno E, Forziato C, Saitta F, Iardino MR, Capaldo B. Fasting plasma glucose and clustering of cardiometabolic risk factors in normoglycemic outpatient children and adolescents. *Diabetes Care*. 2011;34:1412–4.
- Narayan KM, Boyle JP, Thompson TJ, Gregg EW, Williamson DF. Effect of BMI on lifetime risk for diabetes in the U.S. *Diabetes Care*. 2007;30:1562–6.
- Rader DJ, Hovingh GK. HDL and cardiovascular disease. *Lancet*. 2014;384:618–25.
- Cespedes EM, Hu FB. Dietary prevention of obesity and cardiometabolic disease. *Nat Rev Endocrinol*. 2015;11:448–9.
- Drouin-Chartier JP, Gagnon J, Labonte ME, Desroches S, Charest A, Grenier G, et al. Impact of milk consumption on cardiometabolic risk in postmenopausal women with abdominal obesity. *Nutr J*. 2015;14:12.
- Pereira MA, Jacobs DR Jr., Van Horn L, Slattery ML, Kartashov AI, Ludwig DS. Dairy consumption, obesity, and the insulin resistance syndrome in young adults: the CARDIA Study. *JAMA*. 2002;287:2081–9.
- Wiley AS. Dairy and milk consumption and child growth: Is BMI involved? An analysis of NHANES 1999–2004. *Am J Hum Biol*. 2010;22:517–25.
- Soedamah-Muthu SS, Verberne LD, Ding EL, Engberink MF, Geleijnse JM. Dairy consumption and incidence of hypertension: a dose-response meta-analysis of prospective cohort studies. *Hypertension*. 2012;60:1131–7.
- Steinmetz KA, Childs MT, Stimson C, Kushi LH, McGovern PG, Potter JD, et al. Effect of consumption of whole milk and skim milk on blood lipid profiles in healthy men. *Am J Clin Nutr*. 1994;59:612–8.
- Elwood PC, Pickering JE, Fehily AM. Milk and dairy consumption, diabetes and the metabolic syndrome: the Caerphilly prospective study. *J Epidemiol Community Health*. 2007;61:695–8.
- Rationale of the diet-heart statement of the American Heart Association. Report of the AHA nutrition committee. *Arteriosclerosis*. 1982;2:177–91.
- Consensus conference. Lowering blood cholesterol to prevent heart disease. *JAMA*. 1985;253:2080–6.
- Anderson JJ, Klemmer PJ. Risk of high dietary calcium for arterial calcification in older adults. *Nutrients*. 2013;5:3964–74.
- Huth PJ, Park KM. Influence of dairy product and milk fat consumption on cardiovascular disease risk: a review of the evidence. *Adv Nutr*. 2012;3:266–85.
- Troelsen JT, Olsen J, Moller J, Sjostrom H. An upstream polymorphism associated with lactase persistence has increased enhancer activity. *Gastroenterology*. 2003;125:1686–94.
- Bergholdt HK, Nordestgaard BG, Ellervik C. Milk intake is not associated with low risk of diabetes or overweight-obesity: a Mendelian randomization study in 97,811 Danish individuals. *Am J Clin Nutr*. 2015;102:487–96.
- Almon R, Nilsson TK, Sjostrom M, Engfeldt P. Lactase persistence and milk consumption are associated with body height in Swedish preadolescents and adolescents. *Food Nutr Res*. 2011;55:10.
- Bergholdt HK, Nordestgaard BG, Varbo A, Ellervik C. Milk intake is not associated with ischaemic heart disease in observational or Mendelian randomization analyses in 98,529 Danish adults. *Int J Epidemiol*. 2015;44:587–603.
- Mendelian Randomization of Dairy Consumption Working G. Dairy Consumption and Body Mass Index Among Adults: Mendelian Randomization Analysis of 184802 Individuals from 25 Studies. *Clin Chem*. 2018;64:183–91.
- Mendelian Randomization of Dairy Consumption Working G, consortium C. Dairy Intake and Body Composition and Cardiometabolic Traits among Adults: Mendelian Randomization Analysis of 182041 Individuals from 18 Studies. *Clin Chem*. 2019;65:751–60.
- Ding M, Huang T, Bergholdt HK, Nordestgaard BG, Ellervik C, Qi L, et al. Dairy consumption, systolic blood pressure, and risk of hypertension: Mendelian randomization study. *BMJ*. 2017;356:j1000.
- Power C, Elliott J. Cohort profile: 1958 British birth cohort (National Child Development Study). *International journal of epidemiology*. 2006;35:34–41.
- Sonnega A, Faul JD, Ofstedal MB, Langa KM, Phillips JW, Weir DR. Cohort Profile: the Health and Retirement Study (HRS). *Int J Epidemiol*. 2014;43:576–85.
- Astle WJ, Elding H, Jiang T, Allen D, Ruklisa D, Mann AL, et al. The Allelic Landscape of Human Blood Cell Trait Variation and Links to Common Complex Disease. *Cell*. 2016;167:1415–29 e1419.
- Locke AE, Kahali B, Berndt SI, Justice AE, Pers TH, Day FR, et al. Genetic studies of body mass index yield new insights for obesity biology. *Nature*. 2015;518:197–206.

26. Global Lipids Genetics C, Willer CJ, Schmidt EM, Sengupta S, Peloso GM, Gustafsson S, et al. Discovery and refinement of loci associated with lipid levels. *Nat Genet.* 2013;45:1274–83.
27. Scott RA, Lagou V, Welch RP, Wheeler E, Montasser ME, Luan J, et al. Large-scale association analyses identify new loci influencing glycemic traits and provide insight into the underlying biological pathways. *Nat Genet.* 2012;44:991–1005.
28. International Consortium for Blood Pressure Genome-Wide Association S, Ehret GB, Munroe PB, Rice KM, Bochud M, Johnson AD, et al. Genetic variants in novel pathways influence blood pressure and cardiovascular disease risk. *Nature.* 2011;478:103–9.
29. Evangelou E, Warren HR, Mosen-Ansorena D, Mifsud B, Pazoki R, Gao H, et al. Genetic analysis of over 1 million people identifies 535 new loci associated with blood pressure traits. *Nat Genet.* 2018;50:1412–25.
30. Morris AP, Voight BF, Teslovich TM, Ferreira T, Segre AV, Steinthorsdottir V, et al. Large-scale association analysis provides insights into the genetic architecture and pathophysiology of type 2 diabetes. *Nat Genet.* 2012;44:981–90.
31. Schunkert H, König IR, Kathiresan S, Reilly MP, Assimes TL, Holm H, et al. Large-scale association analysis identifies 13 new susceptibility loci for coronary artery disease. *Nat Genet.* 2011;43:333–8.
32. Viessers LET, Sluijs I, van der Schouw YT, Forouhi NG, Imamura F, Burgess S, et al. Dairy Product Intake and Risk of Type 2 Diabetes in EPIC-InterAct: A Mendelian Randomization Study. *Diabetes Care.* 2019;42:568–75.
33. Sinnott-Armstrong N, Tanigawa Y, Amar D, Mars N, Benner C, Aguirre M, et al. Genetics of 35 blood and urine biomarkers in the UK Biobank. *Nat Genet.* 2021;53:185–94.
34. Spiller W, Davies NM, Palmer TM. Software application profile: mrrobust—a tool for performing two-sample summary Mendelian randomization analyses. *Int J Epidemiol.* 2019;48:684–90.
35. Biong AS, Muller H, Seljeflot I, Veierod MB, Pedersen JI. A comparison of the effects of cheese and butter on serum lipids, haemostatic variables and homocysteine. *Br J Nutr.* 2004;92:791–7.
36. Tholstrup T, Hoy CE, Andersen LN, Christensen RD, Sandstrom B. Does fat in milk, butter and cheese affect blood lipids and cholesterol differently? *J Am Coll Nutr.* 2004;23:169–76.
37. Rossouw JE, Burger EM, Van der Vyver P, Ferreira JJ. The effect of skim milk, yoghurt, and full cream milk on human serum lipids. *Am J Clin Nutr.* 1981;34:351–6.
38. Thompson LU, Jenkins DJ, Amer MA, Reichert R, Jenkins A, Kamulsky J. The effect of fermented and nonfermented milks on serum cholesterol. *Am J Clin Nutr.* 1982;36:1106–11.
39. Lawlor DA, Harbord RM, Sterne JA, Timpson N, Davey, Smith G. Mendelian randomization: using genes as instruments for making causal inferences in epidemiology. *Stat Med.* 2008;27:1133–63.
40. Hepner G, St Fried R, Jeor S, Fusetti L, Morin R. Hypocholesterolemic effect of yogurt and milk. *Am J Clin Nutr.* 1979;32:19–24.
41. Howard AN, Marks J. Effect of milk products on serum-cholesterol. *Lancet.* 1979;2:957.
42. Stahelin HB, Ritzel G. Effect of whey on plasma lipids. *Int J Vitam Nutr Res.* 1979;49:229–30.
43. Szilagyi A, Ishayek N. Lactose intolerance, dairy avoidance, and treatment options. *Nutrients.* 2018;10:43.
44. Lorenzen JK, Astrup A. Dairy calcium intake modifies responsiveness of fat metabolism and blood lipids to a high-fat diet. *Br J Nutr.* 2011;105:1823–31.
45. St-Onge MP, Farnworth ER, Jones PJ. Consumption of fermented and nonfermented dairy products: effects on cholesterol concentrations and metabolism. *Am J Clin Nutr.* 2000;71:674–81.
46. Almon R, Alvarez-Leon EE, Engfeldt P, Serra-Majem L, Magnuson A, Nilsson TK. Associations between lactase persistence and the metabolic syndrome in a cross-sectional study in the Canary Islands. *Eur J Nutr.* 2010;49:141–6.
47. Manco L, Dias H, Muc M, Padez C. The lactase -13910C>T polymorphism (rs4988235) is associated with overweight/obesity and obesity-related variables in a population sample of Portuguese young adults. *Eur J Clin Nutr.* 2016;71:21–4.
48. Corella D, Arregui M, Coltell O, Portoles O, Guillem-Saiz P, Carrasco P, et al. Association of the LCT-13910C>T polymorphism with obesity and its modulation by dairy products in a Mediterranean population. *Obesity.* 2011;19:1707–14.
49. Hartwig FP, Horta BL, Smith GD, de Mola CL, Victora CG. Association of lactase persistence genotype with milk consumption, obesity and blood pressure: a Mendelian randomization study in the 1982 Pelotas (Brazil) Birth Cohort, with a systematic review and meta-analysis. *Int J Epidemiol.* 2016;45:1573–87.
50. Albuquerque D, Nobrega C, Manco L. The lactase persistence -13910C>T polymorphism shows indication of association with abdominal obesity among Portuguese children. *Acta Paediatr.* 2013;102:e153–7.
51. Lamri A, Poli A, Emery N, Bellili N, Velho G, Lantieri O, et al. The lactase persistence genotype is associated with body mass index and dairy consumption in the D.E.S.I.R. study. *Metabolism.* 2013;62:1323–9.
52. Smith CE, Coltell O, Sorli JV, Estruch R, Martinez-Gonzalez MA, Salas-Salvado J, et al. Associations of the MCM6-rs3754686 proxy for milk intake in Mediterranean and American populations with cardiovascular biomarkers, disease and mortality: Mendelian randomization. *Sci Rep.* 2016;6:33188.
53. Yang Q, Lin SL, Au Yeung SL, Kwok MK, Xu L, Leung GM, et al. Genetically predicted milk consumption and bone health, ischemic heart disease and type 2 diabetes: a Mendelian randomization study. *Eur J Clin Nutr.* 2017;71:1008–12.
54. DeBoer MD, Agard HE, Scharf RJ. Milk intake, height and body mass index in preschool children. *Arch Dis Child.* 2015;100:460–5.
55. Rosell M, Hakansson NN, Wolk A. Association between dairy food consumption and weight change over 9 y in 19,352 perimenopausal women. *Am J Clin Nutr.* 2006;84:1481–8.
56. Abreu S, Santos R, Moreira C, Santos PC, Vale S, Soares-Miranda L, et al. Milk intake is inversely related to body mass index and body fat in girls. *Eur J Pediatr.* 2012;171:1467–74.
57. Kettunen J, Silander K, Saarela O, Amin N, Muller M, Timpson N, et al. European lactase persistence genotype shows evidence of association with increase in body mass index. *Hum Mol Genet.* 2010;19:1129–36.
58. Tucker LA, Erickson A, LeCheminant JD, Bailey BW. Dairy consumption and insulin resistance: the role of body fat, physical activity, and energy intake. *J Diabetes Res.* 2015;2015:206959.
59. Zong G, Sun Q, Yu D, Zhu J, Sun L, Ye X, et al. Dairy consumption, type 2 diabetes, and changes in cardiometabolic traits: a prospective cohort study of middle-aged and older Chinese in Beijing and Shanghai. *Diabetes Care.* 2014;37:56–63.
60. Turner KM, Keogh JB, Clifton PM. Dairy consumption and insulin sensitivity: a systematic review of short- and long-term intervention studies. *Nutr Metab Cardiovasc Dis.* 2015;25:3–8.
61. Bhavadharini B, Dehghan M, Mente A, Rangarajan S, Sheridan P, Mohan V, et al. Association of dairy consumption with metabolic syndrome, hypertension and diabetes in 147 812 individuals from 21 countries. *BMJ Open. Diabetes Res Care.* 2020;8:e000826.
62. Labonte ME, Cyr A, Abdullah MM, Lepine MC, Vohl MC, Jones P, et al. Dairy product consumption has no impact on biomarkers of inflammation among men and women with low-grade systemic inflammation. *J Nutr.* 2014;144:1760–7.

63. Labonte ME, Couture P, Richard C, Desroches S, Lamarche B. Impact of dairy products on biomarkers of inflammation: a systematic review of randomized controlled nutritional intervention studies in overweight and obese adults. *Am J Clin Nutr.* 2013;97:706–17.
64. Lee YJ, Seo JA, Yoon T, Seo I, Lee JH, Im D, et al. Effects of low-fat milk consumption on metabolic and atherogenic biomarkers in Korean adults with the metabolic syndrome: a randomised controlled trial. *J Hum Nutr Diet.* 2016;29:477–86.
65. Hunter DC, Brown R, Green T, Thomson C, Skeaff M, Williams S, et al. Changes in markers of inflammation, antioxidant capacity and oxidative stress in smokers following consumption of milk, and milk supplemented with fruit and vegetable extracts and vitamin C. *Int J Food Sci Nutr.* 2012;63:90–102.